



## Planning, Development & Inspections

TEL (PLANNING) 919 856 6310  
TEL (INSPECTIONS) 919 856 6222

A Division of Community Services  
P.O. Box 550 • Raleigh, NC 27602  
[www.wakegov.com](http://www.wakegov.com)

**To:** Wake County Planning Board

**From:** Terry Nolan, Senior Planner

**Subject:** PLANWake Final Phase Engagement Map Revision Summary

**Date:** March 8, 2021

### **Summary:**

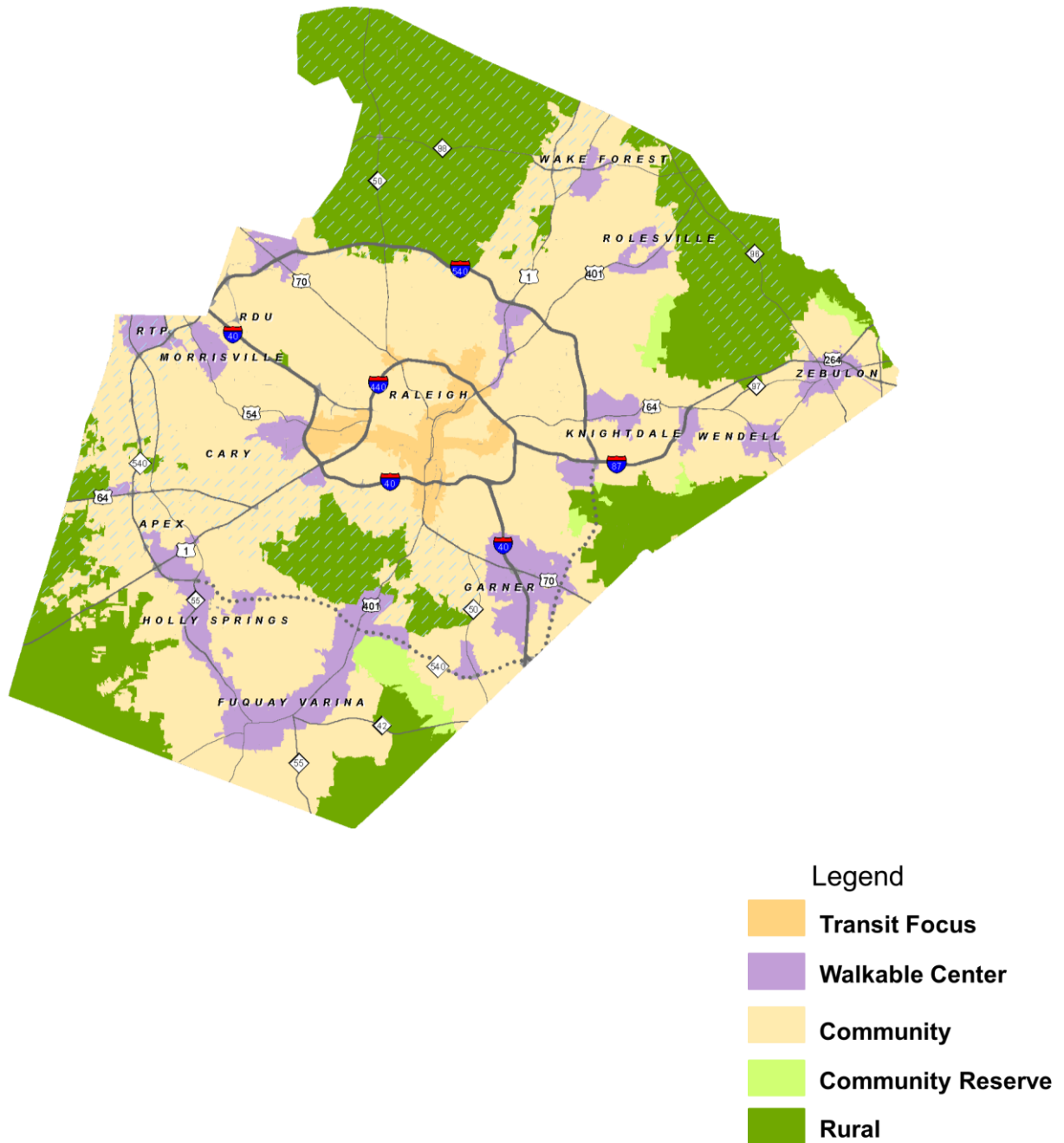
After the Board of Commissioners approved the release of the public review draft in November 2020, Wake County staff reached out to all municipalities and other stakeholders for review and comments. The changes between the November 2020 and March 2021 are summarized below.

### **Map Changes:**

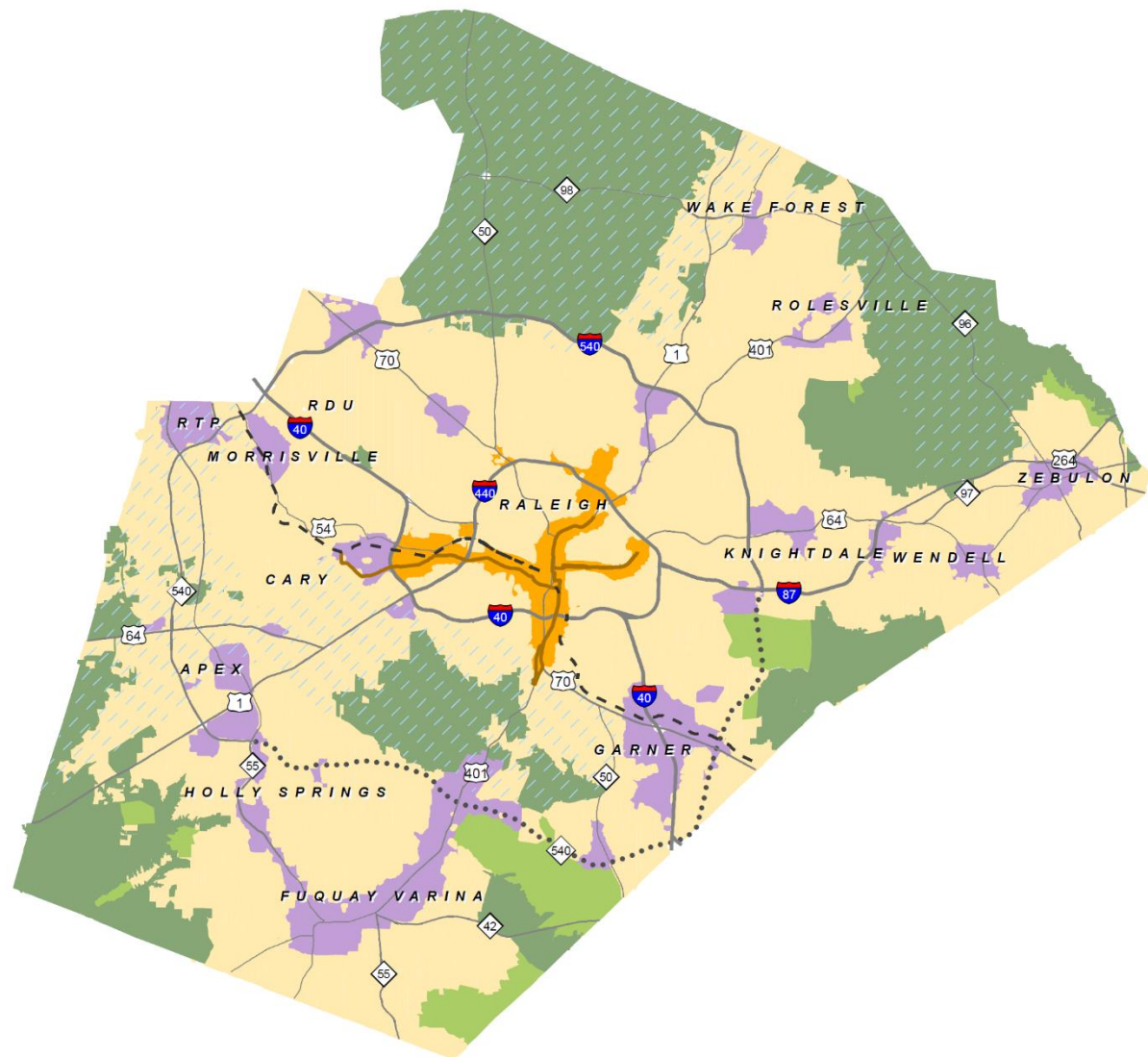
1. Holly Springs:
  - Changed a few small areas from rural to community reserve to reflect the conservation neighborhood designation by the town.
  - Adjusted the boundaries of the walkable centers to align with town plans.
  - Corrected mapping errors where park/natural areas were mistakenly designated as walkable center.
2. Fuquay-Varina:
  - Town staff provided a map showing planned water and sewer capital projects for 2021 – 2031 and requested areas that can be served by near-term improvements be changed from rural to community. Near-term areas of service include areas that can be served by a proposed pump station and force main along Mt. Pleasant Church Road. Town staff requested areas that will be served later in the capital plan be designated as community reserve.
3. Angier:
  - The Town of Angier confirmed their small area within Wake County will be served or serviceable with public utilities within the next five years, so the area was changed to community.
4. Raleigh:
  - City staff requested adjustments to the Southeast area where the city recently concluded a study. Areas south of Poole around future 540 were changed from rural to community reserve and a walkable center was moved to align with the recommendation in the area plan.

- Added a walkable center at Glenwood & Millbrook.
5. Wake Forest:
- The Town Council requested areas within the urban service area, including some parts of the Smith Creek watershed, be changed from rural to community. After some discussion between the town and county, two changes were made (1) any area not in a watershed was changed from rural to community (2) any area already within town limits was changed from rural to community. Wake County maintained a rural classification for any parcels zoned with a watershed designation.
6. Apex:
- Converted downtown Apex from community to walkable center and adjusted other walkable center areas to align with town plans.
  - Converted landfill from walkable center to community.
7. Other:
- Added future commuter rail line as a dashed line to provide context
  - Added the bus rapid transit corridor alignment.

Map 1: Public Review Draft Map Released November 2020



Map 2: Recommended for Adoption by Planning Board March 3, 2021



## Legend

### Development Framework

- Transit Focus
- Walkable Center
- Community
- Community Reserve
- Rural
- Water Supply Watershed
- Proposed Commuter Rail
- Proposed BRT Corridors
- NC-540 Extension