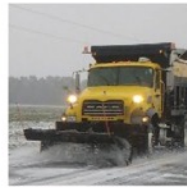




NORTH CAROLINA

Department of Transportation



Expanding Rail in North Carolina

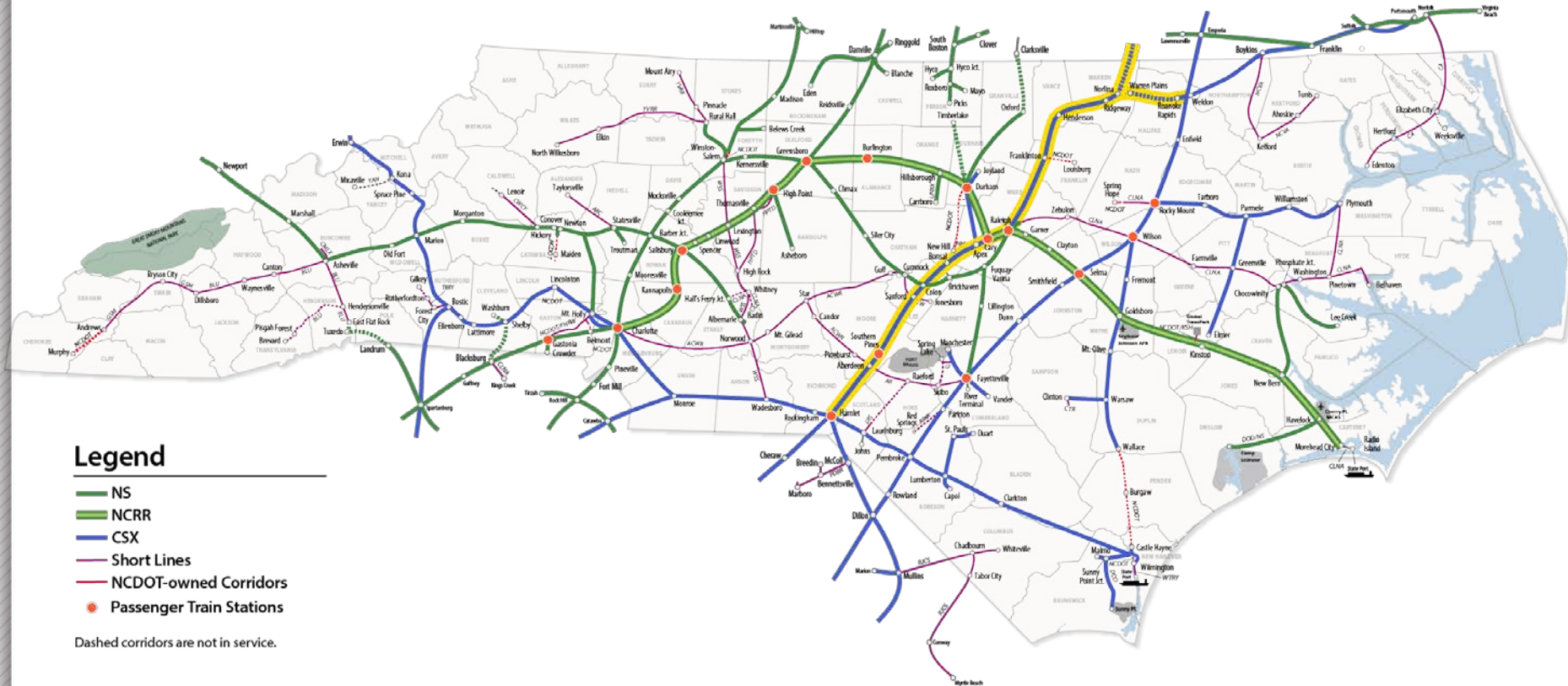
The S-Line Opportunity

Julie White

Deputy Secretary for Multi-Modal Transportation

February 8, 2020

North Carolina Railroad System

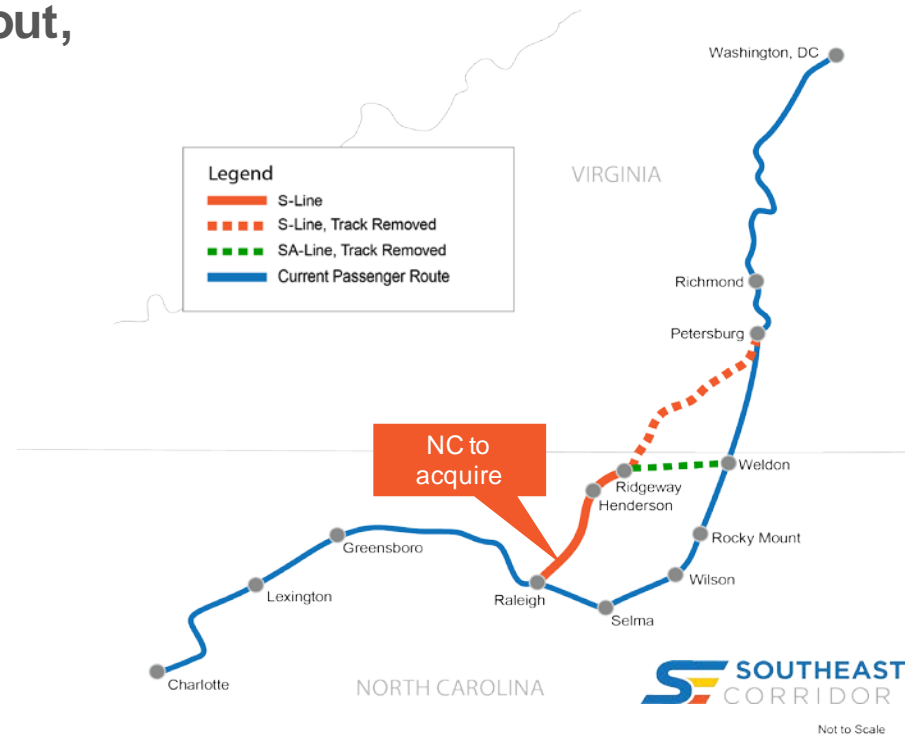


\$47.5M

NCDOT received grant to purchase S-Line ROW – September 2020

Critical for Southeast Corridor buildout, state ownership allows for:

- On-time service
- Increased corridor capacity and resiliency
- Passenger centric service times
- Control of build-out schedule
- Implementation of future technologies
- Economic development opportunities
- Connect manufacturing and job centers to population centers



\$900K

FTA Transit-Oriented Development Planning Grant for the S-Line

Raleigh Mayor Mary-Ann Baldwin said:

“This grant is crucial to moving the S-Line project ahead and restoring passenger rail service between Raleigh and Richmond. In the long-term, the S-Line will improve mobility and reduce congestion, not only in Raleigh, but across the region. I am thrilled to continue working with everyone involved in this project, and deeply appreciate FTA’s support.”

- Opportunity for value capture in rural and urban areas
- 13 potential station locations for TOD planning
- Community partners provided **100% of the required match: \$370K**
 - Wake Forest: \$90K
 - Franklinton: \$30K
 - Raleigh: \$150K
 - Apex: \$40K
 - Sanford: \$30K
 - Henderson: \$30K

**\$900K**

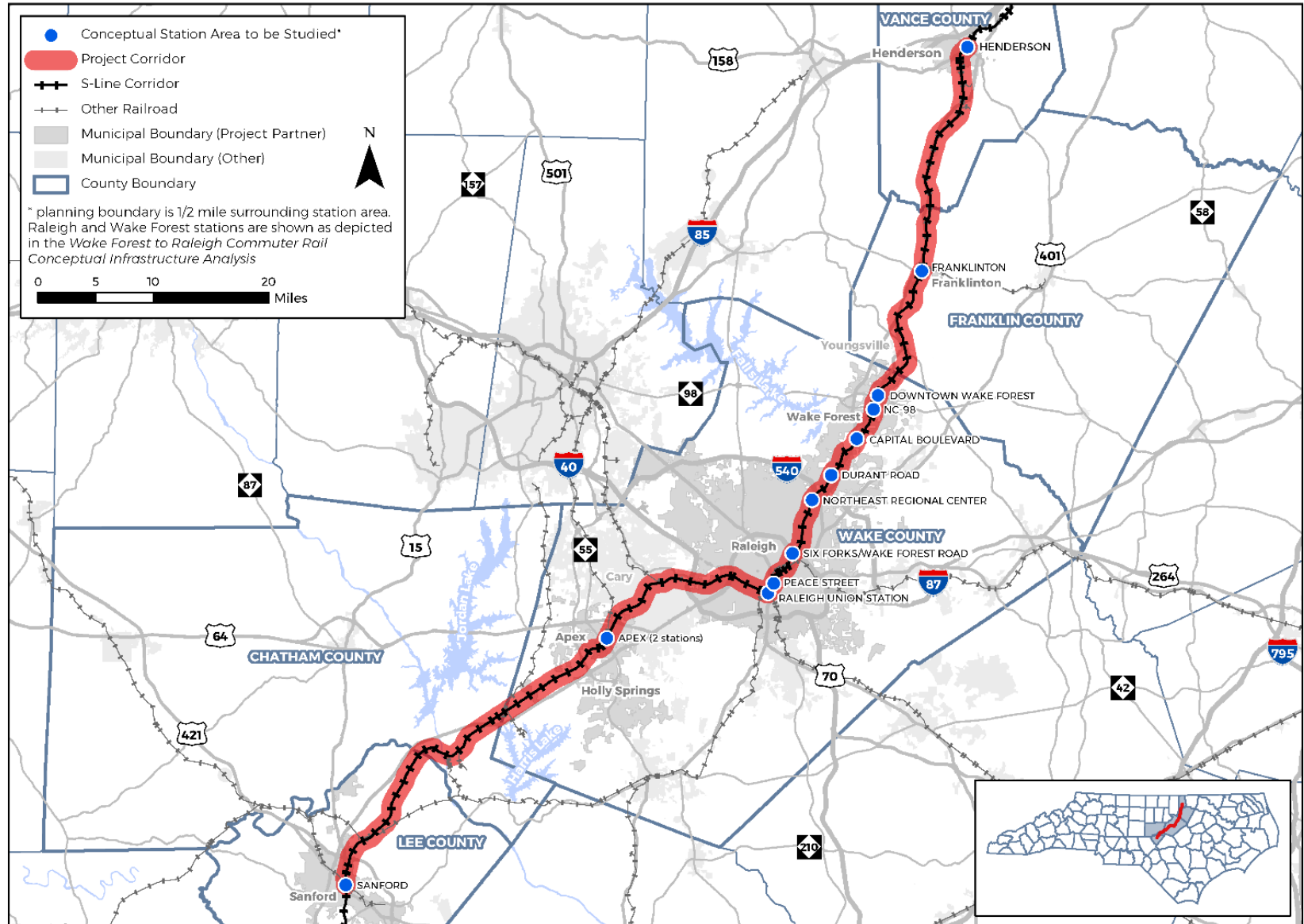
FTA Transit-Oriented Development Planning Grant for the S-Line

- Grant will deliver corridor wide planning as well as potential station area plans
 - Corridor Wide Planning Effort – community engagement, corridor wide shared vision, corridor level market study, etc.
 - Station Area Planning – town specific planning for the potential station area
- Wake County participation in the TOD grant will provide Wake County an opportunity to be an active partner in the corridor wide planning effort and the additional resources will allow for more robust planning.
- A \$75,000 contribution would be commensurate with the contributions of the other stakeholders.

Connecting Rural and Urban Triangle Communities Through Equitable Transit Oriented Development

Greater Research Triangle Region, North Carolina

Raleigh and Wake Forest study areas are shown as depicted in the *Wake Forest to Raleigh Commuter Rail Conceptual Infrastructure Analysis*



Next Steps

Ready to Build



1

Continue partnership with MPOs, RPOs, communities, and private developers to progress corridor development and planning

2

Seek funding for incremental rail infrastructure improvement projects

- STI
- Federal discretionary grants
- Potential economic stimulus packages