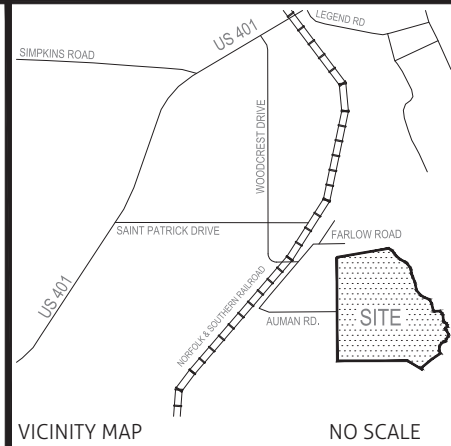


LEGEND

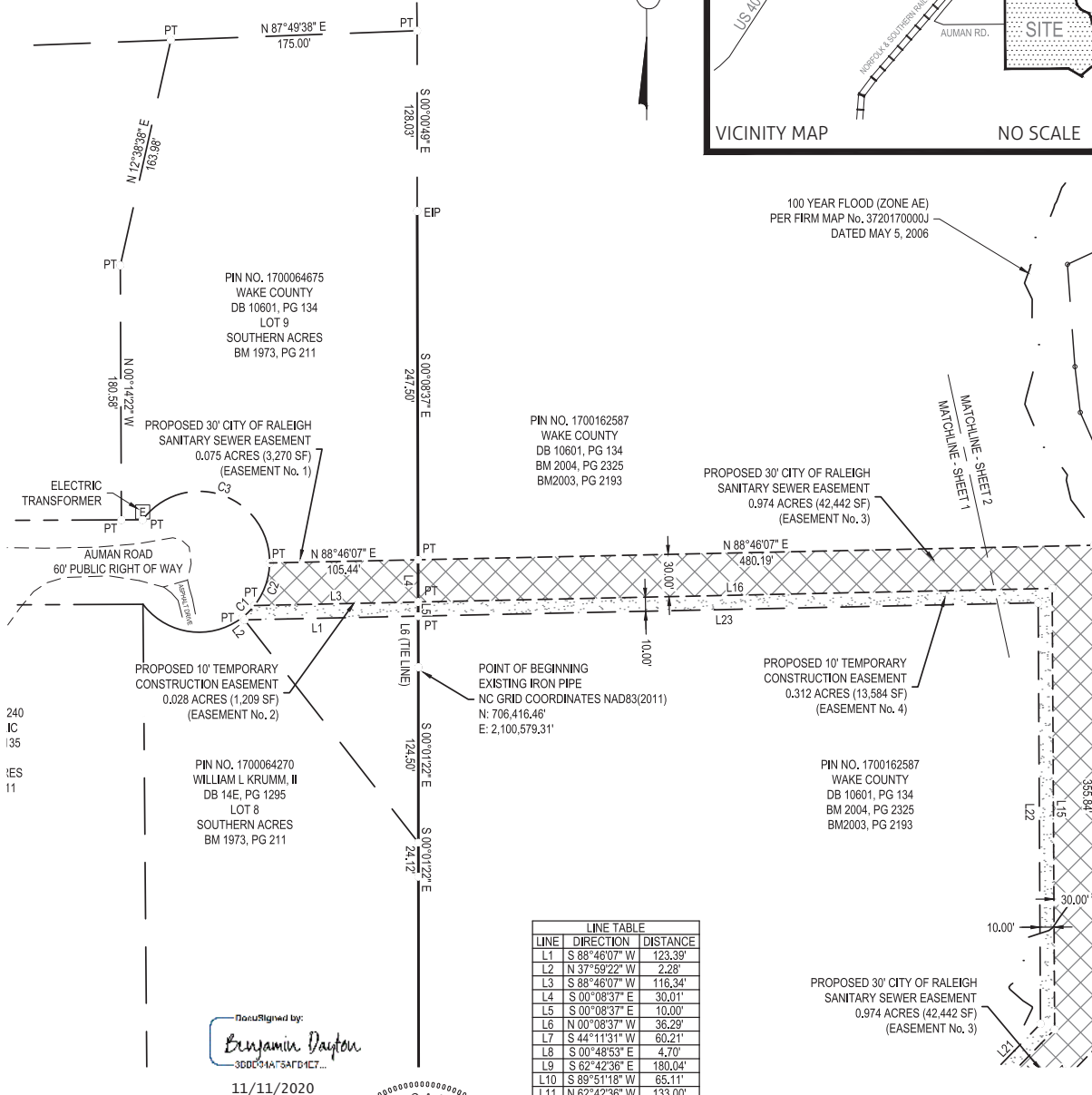
(EIP)-EXISTING IRON PIPE
(RIR)-EXISTING IRON REBAR
(PT)-COMPUTED POINT (NO MONUMENT FOUND OR SET)
(WV)-WATER VALVE
(LP)-LIGHT POLE
(PP)-POWER POLE
(MB)-MAILBOX
(EOP)-EDGE OF PAVEMENT
(CMP)-COURRAGATED METAL PIPE
(RCP)-REINFORCED CONCRETE PIPE
100 YEAR FLOOD LINE
BOUNDARY
BOUNDARY LINE NOT SURVEYED
EASEMENT
RIGHT OF WAY

N.C. GRID NORTH (NAD 83) (2011)



VICINITY MAP

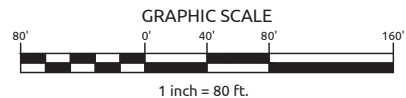
NO SCALE



Not Signed by:
Benjamin Dayton
300C91A75AFD1C7...
11/11/2020

LINE	DIRECTION	DISTANCE
L1	S 88°46'07" W	123.39'
L2	N 37°59'22" W	2.28'
L3	S 88°46'07" W	116.34'
L4	S 00°08'37" E	30.01'
L5	S 00°08'37" E	10.00'
L6	N 00°08'37" W	36.29'
L7	S 44°11'31" W	60.21'
L8	S 00°48'53" E	4.70'
L9	S 62°42'36" E	180.04'
L10	S 89°51'18" W	65.11'
L11	N 62°42'36" W	133.00'
L12	N 23°18'29" W	392.68'
L13	N 00°48'53" W	23.09'
L14	N 44°11'31" E	60.37'
L15	N 00°19'05" W	313.08'
L16	S 88°46'07" W	450.28'
L17	S 89°51'18" W	21.70'
L18	N 62°42'36" W	117.31'
L19	N 23°18'29" W	398.25'
L20	N 00°48'53" W	29.22'
L21	N 44°11'31" E	60.42'
L22	N 00°19'05" W	296.82'
L23	S 88°46'07" W	440.31'

CURVE	RADIUS	ARC LENGTH	CHORD LENGTH	CHORD BEARING
C1	50.00'	11.89'	11.86'	N 45°14'56" E
C2	50.00'	32.70'	32.12'	N 19°42'00" E
C3	50.00'	125.99'	95.21'	S 71°13'19" E



NOTES:

1. BASIS OF BEARINGS, NC GRID NORTH, NAD83(2011)
2. AREAS COMPUTED BY COORDINATE METHOD.
3. ALL DISTANCES ARE HORIZONTAL GROUND DISTANCES.
4. PORTIONS OF THIS PROPERTY ARE LOCATED WITHIN A DESIGNATED FEMA FLOODPLAIN (ZONE AE) AS SHOWN ON THE FEMA INSURANCE RATE MAP No. 3720170000J, DATED 5/2/2006.

THIS MAP IS NOT A CERTIFIED SURVEY AND HAS NOT BEEN REVIEWED BY A LOCAL GOVERNMENT AGENCY FOR COMPLIANCE WITH ANY APPLICABLE LAND DEVELOPMENT REGULATIONS.



REVISIONS:	DATE: 8-21-2020
EASEMENT LOCATION - 11-11-20	SCALE: 1"=80'
	SURVEYED BY: WR
	DRAWN BY: BD
	CHECK & CLOSURE BY: BD
	CAD FILE: WAKE COUNTY EXHIBIT
	PROJECT NO: 02170841.00

EXHIBIT MAP OF PROPOSED UTILITY EASEMENT

PROPERTY OF
WAKE COUNTY

TOWNSHIP: ST. MARY'S	COUNTY: WAKE	STATE: NC
P.L.N.: SEE MAP	SHEET: 1 of 3	

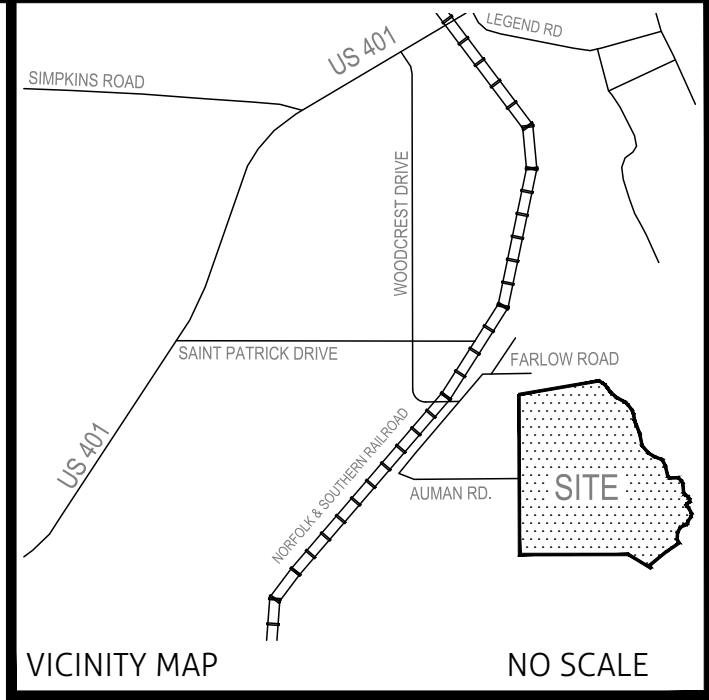


WithersRavenel
Engineers | Planners | Surveyors

115 Mackenran Drive | Cary, NC 27511
t: 919.469.3340 | license #: C-0832
www.withersravenel.com

LEGEND

(EIP)-EXISTING IRON PIPE
(RIR)-EXISTING IRON REBAR
(PT)-COMPUTED POINT (NO MONUMENT FOUND OR SET)
(WV)-WATER VALVE
(LP)-LIGHT POLE
(PP)-POWER POLE
(MB)-MAILBOX
(EOP)-EDGE OF PAVEMENT
(CMP)-COURRAGUATED METAL PIPE
(RCP)-REINFORCED CONCRETE PIPE
100 YEAR FLOOD LINE
BOUNDARY
BOUNDARY LINE NOT SURVEYED
EASEMENT
RIGHT OF WAY



62587
NTY
3 134
2325
2193

PROPOSED 30' CITY OF RALEIGH
SANITARY SEWER EASEMENT
0.974 ACRES (42,442 SF)
(EASEMENT No. 3)

PROPOSED 10' TEMPORARY
CONSTRUCTION EASEMENT
0.312 ACRES (13,584 SF)
(EASEMENT No. 4)

PIN NO. 1700162587
WAKE COUNTY
DB 10601, PG 134
BM 2004, PG 2325
BM2003, PG 2193

PROPOSED 30' CITY OF RALEIGH
SANITARY SEWER EASEMENT
0.974 ACRES (42,442 SF)
(EASEMENT No. 3)

PROPOSED 10' TEMPORARY
CONSTRUCTION EASEMENT
0.312 ACRES (13,584 SF)
(EASEMENT No. 4)

CONSERVATION EASEMENT per
BM 2004, PG 2325
DB 11344, PG 282

CONSERVATION EASEMENT per
BM 2004, PG 2325
DB 11344, PG 282

WETLANDS AS DELINEATED BY
WITHERSRAVENEL ON 7/27/2020

100 YEAR FLOOD (ZONE AE)
PER FIRM MAP No. 3720170000J
DATED MAY 5, 2006

LINE TABLE		
LINE	DIRECTION	DISTANCE
L1	S 88°46'07" W	123.39'
L2	N 37°59'22" W	2.28'
L3	S 88°46'07" W	116.34'
L4	S 00°08'37" E	30.01'
L5	S 00°08'37" E	10.00'
L6	N 00°08'37" W	36.29'
L7	S 44°11'31" W	60.21'
L8	S 00°48'53" E	4.70'
L9	S 62°42'36" E	180.04'
L10	S 89°51'18" W	65.11'
L11	N 62°42'36" W	133.00'
L12	N 23°18'29" W	392.68'
L13	N 00°48'53" W	23.09'
L14	N 44°11'31" E	60.37'
L15	N 00°19'05" W	313.08'
L16	S 88°46'07" W	450.28'
L17	S 89°51'18" W	21.70'
L18	N 62°42'36" W	117.31'
L19	N 23°18'29" W	398.25'
L20	N 00°48'53" W	29.22'
L21	N 44°11'31" E	60.42'
L22	N 00°19'05" W	298.82'
L23	S 88°46'07" W	440.31'

NOTES:

1. BASIS OF BEARINGS, NC GRID NORTH, NAD83(2011)
2. AREAS COMPUTED BY COORDINATE METHOD.
3. ALL DISTANCES ARE HORIZONTAL GROUND DISTANCES.
4. PORTIONS OF THIS PROPERTY ARE LOCATED WITHIN A DESIGNATED FEMA FLOODPLAIN (ZONE AE) AS SHOWN ON THE FEMA INSURANCE RATE MAP No. 3720070000J, DATED 5/2/2006.

THIS MAP IS NOT A CERTIFIED SURVEY AND HAS NOT BEEN REVIEWED BY A LOCAL GOVERNMENT AGENCY FOR COMPLIANCE WITH ANY APPLICABLE LAND DEVELOPMENT REGULATIONS.



DocuSigned by:

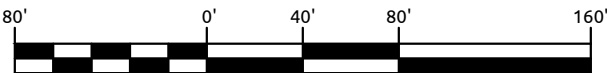
Benjamin Dayton

3BBD04AF5AFB4E7...

11/11/2020

CURVE TABLE				
CURVE	RADIUS	ARC LENGTH	CHORD LENGTH	CHORD BEARING
C1	50.00'	11.89'	11.86'	N 45°14'56" E
C2	50.00'	32.70'	32.12'	N 19°42'00" E
C3	50.00'	125.99'	95.21'	S 71°13'19" E

GRAPHIC SCALE



1 inch = 80 ft.

REVISIONS:	DATE: 8-21-2020
EASEMENT LOCATION 11-11-2020	SCALE: 1"=80'
	SURVEYED BY: WR
	DRAWN BY: BD
	CHECK & CLOSURE BY: BD
	CAD FILE: WAKE COUNTY EXHIBIT
	PROJECT NO: 02170841.00

EXHIBIT MAP OF
PROPOSED UTILITY EASEMENT

PROPERTY OF
WAKE COUNTY

TOWNSHIP: ST. MARY'S	COUNTY: WAKE	STATE: NC
P.I.N.: SEE MAP	SHEET: 2 of 3	



WithersRavenel
Engineers | Planners | Surveyors

115 MacKenan Drive | Cary, NC 27511
t: 919.469.3340 | license #: C-0832
www.withersravenel.com

(EIP)-EXISTING IRON PIPE
(RIR)-EXISTING IRON REBAR
(PT)-COMPUTED POINT (NO MONUMENT FOUND OR SET)
(WV)-WATER VALVE
(LP)-LIGHT POLE
(PP)-POWER POLE
(MB)-MAILBOX
(EOP)-EDGE OF PAVEMENT
(CMP)-COURRAGUATED METAL PIPE
(RCP)-REINFORCED CONCRETE PIPE
100 YEAR FLOOD LINE _____
BOUNDARY _____
BOUNDARY LINE NOT SURVEYED _____
EASEMENT _____
RIGHT OF WAY _____

PROPOSED 30' CITY OF RALEIGH
SANITARY SEWER EASEMENT
0.974 ACRES (42,442 SF)
(EASEMENT No. 3)

PROPOSED 10' TEMPORARY
CONSTRUCTION EASEMENT
0.312 ACRES (13,584 SF)
(EASEMENT No. 4)

PIN NO. 1700162587
WAKE COUNTY
DB 10601, PG 134
BM 2004, PG 2325
BM2003, PG 2193

PROPOSED 30' CITY OF RALEIGH
SANITARY SEWER EASEMENT
0.974 ACRES (42,442 SF)
(EASEMENT No. 3)

PROPOSED 10' TEMPORARY
CONSTRUCTION EASEMENT
0.312 ACRES (13,584 SF)
(EASEMENT No. 4)

S 89°51'18" W
(TIE TO EXISTING EIP)

WETLANDS AS DELINEATED BY
WITHERSRAVENEL ON 7/27/2020

CONSERVATION EASEMENT per
BM 2004, PG 2325
DB 11344, PG 282

WETLANDS AS DELINEATED BY
WITHERSRAVENEL ON 7/27/2020

PIN NO. 1700162587
WAKE COUNTY
DB 10601, PG 134
BM 2004, PG 2325
BM2003, PG 2193

WETLANDS AS DELINEATED BY
WITHERSRAVENEL ON 7/27/2020

CONSERVATION EASEMENT per
- BM 2004, PG 2325
DB 11344, PG 282

PIN NO. 1700141920
ANN W. THOMPSON
DB 250, PB 000E
BM 2004, PG 2065

1. BASIS OF BEARINGS, NC GRID NORTH, NAD83(2011)
2. AREAS COMPUTED BY COORDINATE METHOD.
3. ALL DISTANCES ARE HORIZONTAL GROUND DISTANCES.
4. PORTIONS OF THIS PROPERTY ARE LOCATED WITHIN A DESIGNATED FEMA FLOODPLAIN (ZONE AE) AS SHOWN ON THE FEMA INSURANCE RATE MAP No. 3720070000J, DATED 5/2/2006.

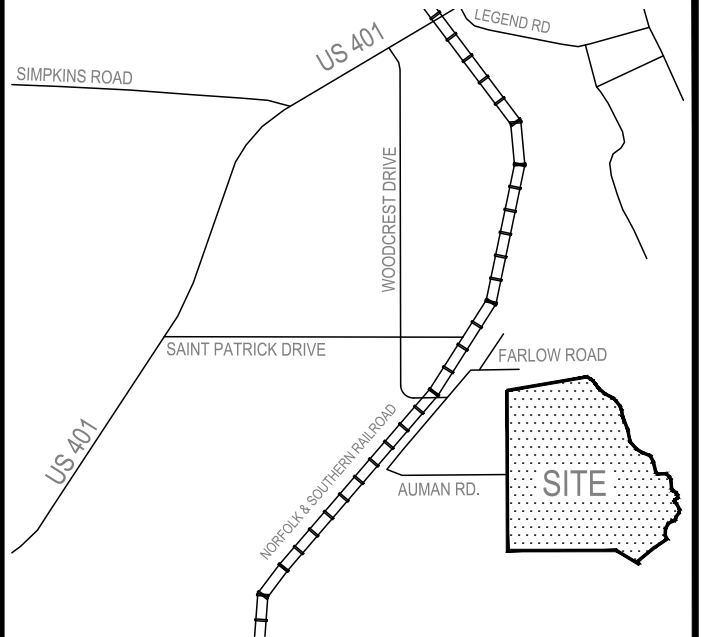
The seal is circular with a double-lined border. The outer ring contains the text "NORTH CAROLINA" at the top and "LAND SURVEYOR" at the bottom, separated by small dots. The inner ring contains the name "BENJAMIN E. DAYTON" at the bottom and "PROFESSIONAL" at the top, also separated by small dots. In the center of the seal, the word "SEAL" is positioned above the number "L-4390".

Benjamin Dayton
—3BBD04AF5AFB4E7...

GRAPHIC SCALE

80' 0' 40' 80' 160'

1 inch = 80 ft.



VICINITY MAP

NO SCALE

CURVE TABLE				
CURVE	RADIUS	ARC LENGTH	CHORD LENGTH	CHORD BEARING
C1	50.00'	11.89'	11.86'	N 45°14'56" E
C2	50.00'	32.70'	32.12'	N 19°42'00" E
C3	50.00'	125.99'	95.21'	S 71°13'19" E

LINE TABLE		
LINE	DIRECTION	DISTANCE
L1	S 88°46'07" W	123.39'
L2	N 37°59'22" W	2.28'
L3	S 88°46'07" W	116.34'
L4	S 00°08'37" E	30.01'
L5	S 00°08'37" E	10.00'
L6	N 00°08'37" W	36.29'
L7	S 44°11'31" W	60.21'
L8	S 00°48'53" E	4.70'
L9	S 62°42'36" E	180.04'
L10	S 89°51'18" W	65.11'
L11	N 62°42'36" W	133.00'
L12	N 23°18'29" W	392.68'
L13	N 00°48'53" W	23.09'
L14	N 44°11'31" E	60.37'
L15	N 00°19'05" W	313.08'
L16	S 88°46'07" W	450.28'
L17	S 89°51'18" W	21.70'
L18	N 62°42'36" W	117.31'
L19	N 23°18'29" W	398.25'
L20	N 00°48'53" W	29.22'
L21	N 44°11'31" E	60.42'
L22	N 00°19'05" W	298.82'
L23	S 88°46'07" W	440.31'

EASEMENT LOCATION 11-11-2020

SCALE: 1"=80'

DRAWN BY:BD

CAD FILE: WAKE COUNTY EXHIBIT

PROJECT NO: 02170841.00

EXHIBIT MAP OF PROPOSED UTILITY EASEMENT

PROPERTY OF
WAKE COUNTY

TOWNSHIP: ST. MARY'S

COUNTY: WAKE

STATE: NC

P.I.N.: SEE MAP

SHEET: 3 of 3



WithersRavenel
Engineers | Planners | Surveyors

115 MacKenan Drive | Cary, NC 27511
t: 919.469.3340 | license #: C-0832
www.withersravenel.com