

2020-2025 Consolidated Plan Public Hearing

Department of Housing Affordability
& Community Revitalization

February 17, 2020



@wakegov



wakegov.com

Seeking Public Input

Consolidated Plan*

Strategic Plan focused on Housing Affordability, Homelessness, and Community Development by priority populations

Analysis of Impediments to Fair Housing Choice (AI)

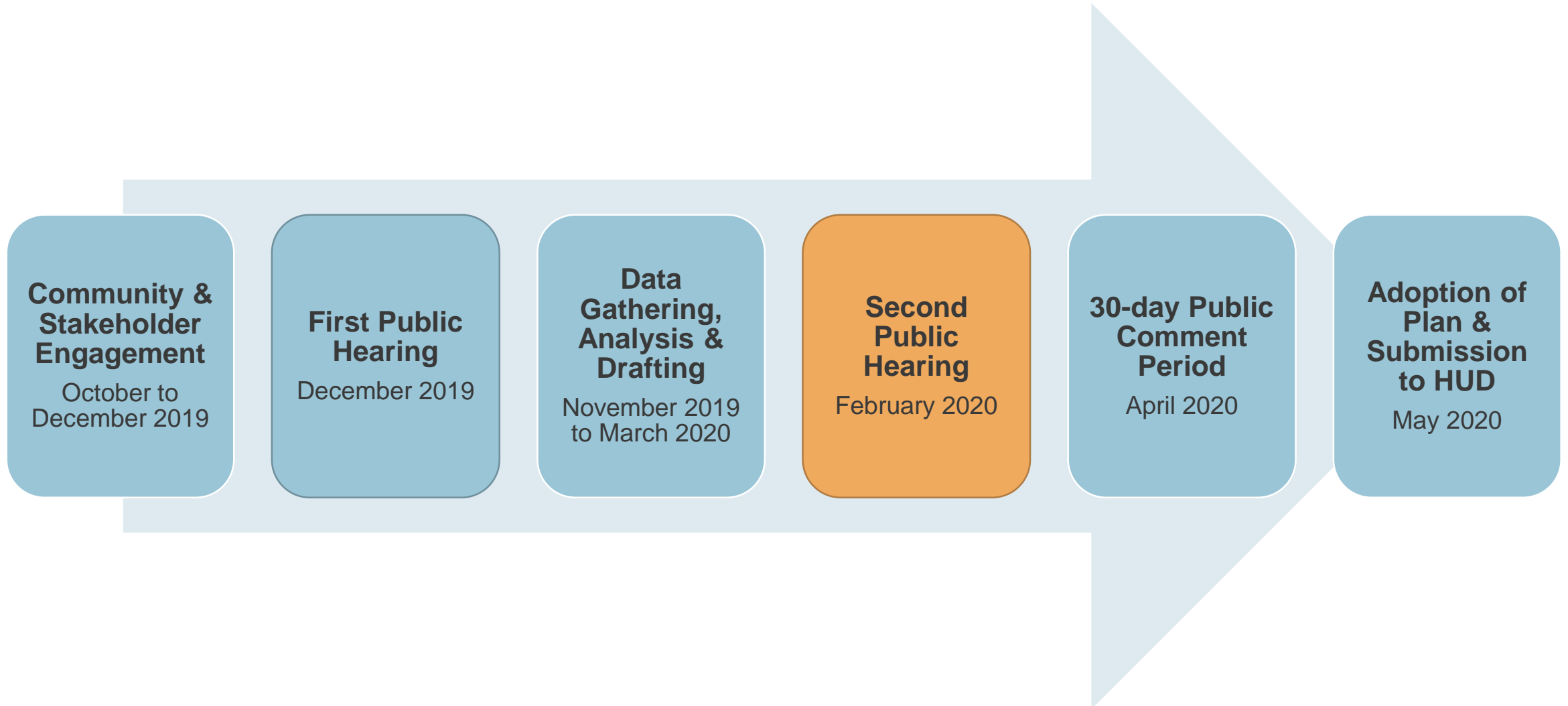
Assessment of local laws, policies and conditions that affect the location, availability, and accessibility of housing

Citizen Participation Plan (CPP)

Describes process and opportunities for citizens to participate in the planning, implementation and assessment of programs or projects

* The Consolidated Plan also contains the one-year Annual Action Plan which contains specific program funding for FY 2020-2021

Estimated Plan Process & Timeline



Funding Sources Included in the Plan



CDBG

Community
Development Block
Grant



HOME

HOME Investment
Partnership Grant



HOPWA

Housing
Opportunities for
Persons With AIDS



ESG

Emergency
Solutions Grant

The Consolidated Plan is required by HUD in order to receive federal grants projected to total more than \$22 million over the course of the next five years. It may also describe County funding used to support initiatives of particular interest to HUD.

Whom We Can Serve

Participants must meet HUD income limits

	Household Size							
% of Area Median Income (AMI)	1	2	3	4	5	6	7	8
Median Income (100%)	\$65,170	\$74,480	\$83,790	\$93,100	\$100,548	\$107,996	\$115,444	\$122,892
Low Income (80%)	\$51,950	\$59,350	\$66,750	\$74,150	\$80,100	\$86,050	\$91,950	\$97,900
Very Low Income (50%)	\$32,450	\$37,100	\$41,750	\$46,350	\$50,100	\$53,800	\$57,500	\$61,200
40%	\$25,960	\$29,680	\$33,400	\$37,080	\$40,080	\$43,040	\$46,000	\$48,960
Extremely Low Income (30%)	\$19,500	\$22,250	\$25,050	\$27,800	\$30,050	\$32,250	\$34,500	\$36,700



Consolidated Plan

Topics, Trends, Goals and Populations

Community Engagement Trends & Topics

- Wrap-around services/case management
- Policy Improvements
- Transportation and Mobility
- Financial Assistance
- Affordable Housing
- Awareness and Marketing of Housing Programs
- Impact of Increasing Cost of Living
- Improved Agency Coordination and Capacity
- Landlord Engagement
- Increased Job Training and Economic Opportunity
- Preservation and Rehabilitation of Existing Affordable Housing
- Develop Supportive Housing
- Fair Housing
- Homeownership
- Neighborhood Revitalization

Consolidated Plan Goals



Increase & Preserve Affordable Housing



Address Policy Barriers to Housing Affordability



Support Vulnerable Populations & Communities

Priority Populations Reflect Market Changes

Priority	2015-2020 Consolidated Plan	2020-2025 Consolidated Plan
High	<ul style="list-style-type: none">• Renters 0-40% AMI• Individuals & families experiencing homelessness• Individuals & families with special needs, not experiencing homelessness	<ul style="list-style-type: none">• Renters & Homeowners 0-50% AMI• Vulnerable populations experiencing homelessness
Medium	<ul style="list-style-type: none">• Renters & Homeowners 41-50% AMI	<ul style="list-style-type: none">• Renters & Homeowners 51-60% AMI• Vulnerable populations not experiencing homelessness
Low	<ul style="list-style-type: none">• Renters & Homeowners 51-80% AMI	<ul style="list-style-type: none">• Renters & Homeowners 61-80% AMI

A stylized, light blue map of Wake County is centered in the background of the slide. The map shows the county's irregular shape with various internal boundaries.

Annual Action Plan

Programs & Allocations

CDBG Grant Activity	Estimated Budget
Rehabilitation of single and multi-family homes including emergency repairs for seniors and persons with disabilities	\$770,960
Housing Activities: Acquisition	\$150,000
Housing Activities: Home Purchase	\$250,000
Neighborhood Revitalization Program	\$504,000
Public Services: Job training	\$20,000
Public Services: Rental assistance	\$30,000
Public Services: Street Outreach	\$100,000
Public Services: Shelter Services	\$160,000
Grant Administration	\$413,740
Total	2,398,700

HOME Grant Activity	Estimated Budget
Development or preservation of affordable housing	\$1,064,640
Grant Administration	\$88,293
Total	\$1,152,993

HOPWA Grant Activity	Estimated Budget
Long term rental assistance	\$521,808
Short term rent, mortgage, and utility assistance	\$160,500
Supportive services	\$109,409
Grant Administration	\$24,278
Total	\$815,995

ESG Grant Activity	Estimated Budget
Homelessness Prevention	\$161,478
Total	\$161,478



Analysis of Impediments to Fair Housing Choice

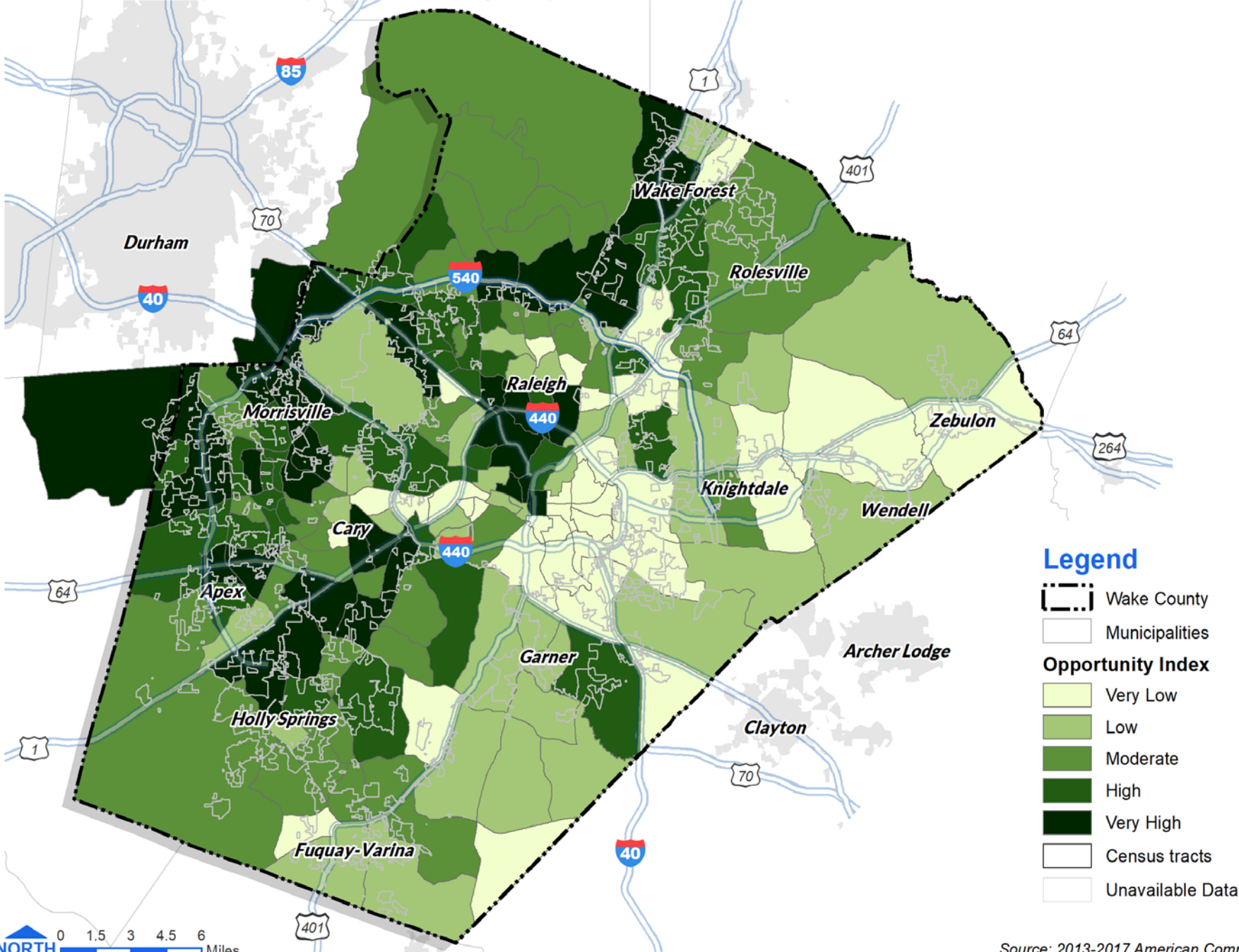
Analysis of Impediments Goals - Countywide

1. Remove barriers to accessing community assets for members of the protected classes
2. Advocate for public transit systems to connect lower income neighborhoods with major employment centers
3. Increase the competitiveness of mortgage applications among members of the protected classes
4. Increase fair housing education, outreach and enforcement across all of Wake County

Analysis of Impediments Goals – Wake County

1. Maintain the creation and preservation of affordable housing development in higher opportunity areas a Countywide priority
2. Ensure that Wake County CDBG subrecipients affirmatively further fair housing
3. Increase CDBG program subrecipient awareness of fair housing laws and ensure the subrecipients' actions are in compliance with HUD regulations and consistent with fair housing laws
4. Collaborate to establish a Wake County Human Relations Commission with appropriate investigative and enforcement authority for housing discrimination complaints

Census tracts shown outside of Wake County contain portions of Raleigh or Cary



Residents of western Wake County have the best access to opportunity overall

The results from the five sub-indices (prosperity, labor market engagement, job access, transit access, and community health) were summed into one composite score, a Comprehensive Opportunity Index.

The objective of the communities of opportunity index is to identify places that are good locations for investment.

A stylized, light blue map of Wake County is centered in the background of the slide. The map shows the county's irregular shape with various internal divisions.

Citizen Participation Plan

Citizen Participation Plan

The primary goal is to provide all citizens with adequate opportunities to participate in an advisory role in the planning, implementation, and assessment of the County's HUD Entitlement programs

- The CPP was last updated in 2010
- Housing will continue to seek public engagements through accessible public meetings, hearings, and notices
- Documents will be shared at numerous public centers for accessible review and comment

Citizen Participation Plan

2010 Plan Substantial Amendments

Wake County must substantially amend the Plan when:

- It decides not to carry out an activity described in the plan;
- It decides to carry out an activity not described in the plan;
- It substantially changes the purpose, scope, location or beneficiaries of an activity.

2020 Plan Substantial Amendments

Wake County must substantially amend the Consolidated Plan when:

- "Substantial change" is any budgetary change(s) exceeding 20% of that Fiscal Year budget, including all resources
- Amendments not meeting the above definition are considered minor amendments are processed administratively.

A stylized, light blue map of Wake County is centered in the upper half of the slide. The map shows the county's irregular shape with various indentations and protrusions.

Public Comments