



# Continuous CIP Appropriation & Reallocation

David Neter, Chief Operating Officer Wake County Public School System  
Bryan Roof, Cumming Corporation  
January 18, 2020

# Continuous CIP Appropriation & Reallocation

APPROPRIATIONS	
Continuous CIP	Amount
E-44	\$3,166,134
H-12	\$7,886,458
York ES Renovation	\$42,391,963
Swift Creek ES	\$3,222,339
Fuquay-Varina MS	\$6,042,753
Life Cycle Building Comp.	\$27,000,000
Life Cycle Furniture	\$1,957,000
Educational Equipment	\$1,030,000
Technology Infrastructure	\$6,180,000
Security	\$4,349,690
Continuous CIP Total	\$103,226,336

## Key Drivers:

- Design Funds: E-44, H12, FVMS, Swift Creek
- Construction funding: York Elementary & West Millbrook MS (partial for early sitework)
- Technology Devices, Mobile Classrooms, Assessments, Property Acquisition, SNAP, Partial Renovation & Improvement funding.

REALLOCATION CONTINUOUS CIP			
FROM	Amount	TO	Amount
H-12	\$1,777,661	WMMS	\$1,777,661
Swift Creek Elementary	\$3,222,339	WMMS	\$3,222,339
SNAP	\$14,000,000	Land Acquisition	\$14,000,000
TOTAL	\$19,000,000	TOTAL	\$19,000,000

School	Scope
E-44	New Large Elementary in Fuquay-Varina
H-12	New Large High School in Apex
W Millbrook MS	Full Demolition and Replacement in Raleigh
Swift Creek	Full Demolition and Replacement in Raleigh
Fuquay Varina MS	New - Permanent Relocation of existing school
York ES	Full Demolition and Replacement in Raleigh

# Major Projects

York ES Reno

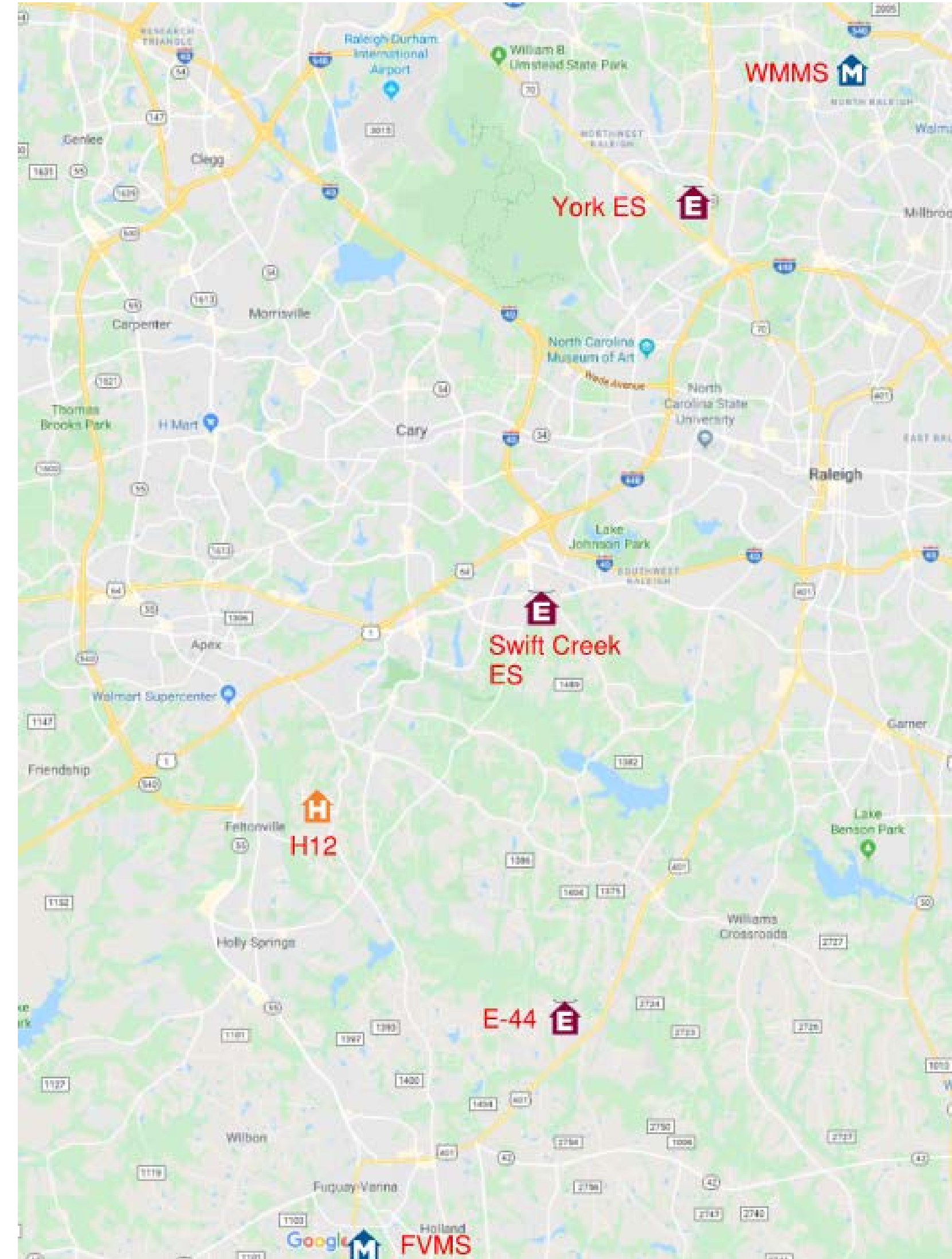
West Millbrook MS Reno

Swift Creek ES Reno

FVMS Reno (New Relocated)

H-12 NEW

E-44 NEW





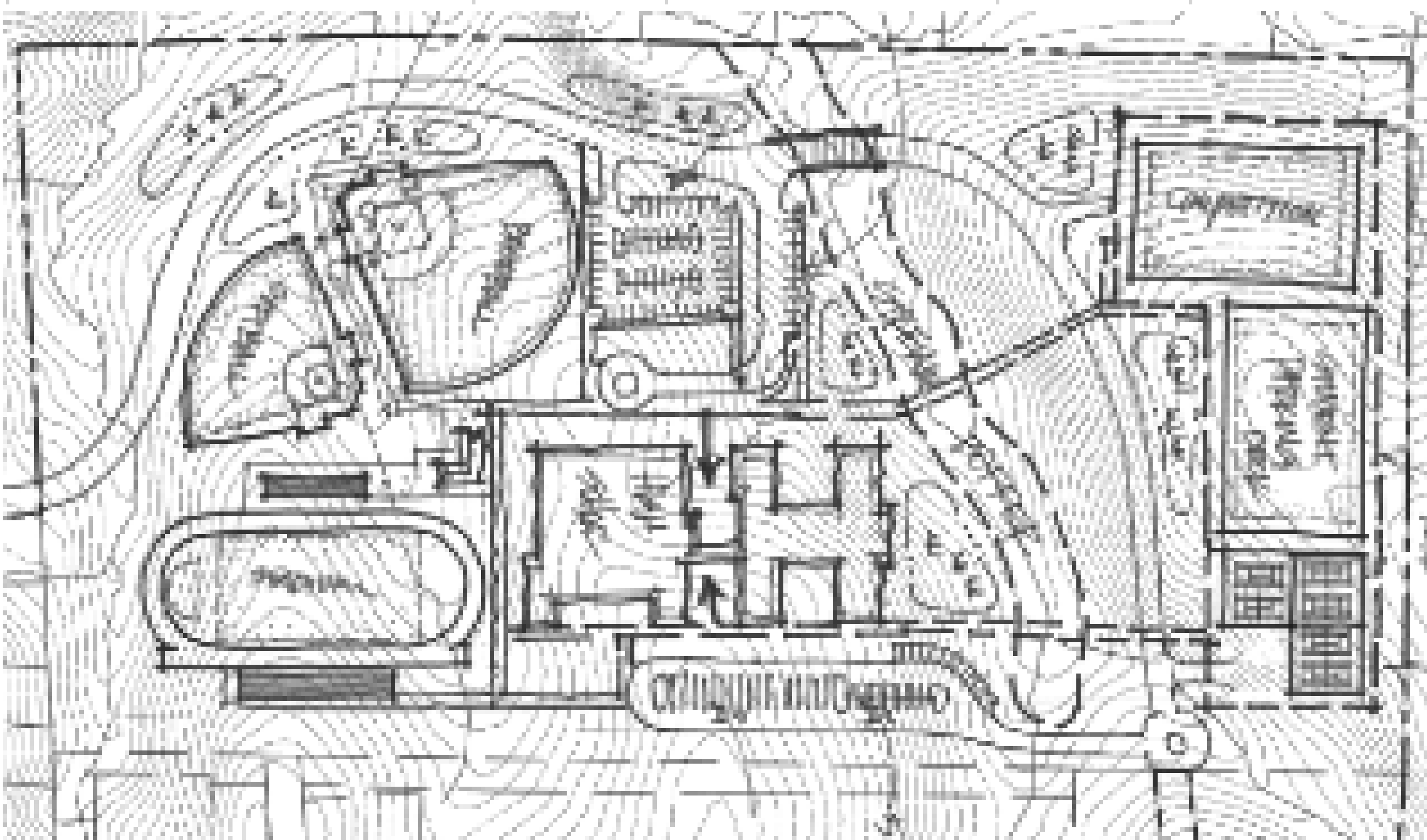
Project Summary / E-44 [Design]

(1 of 6)

School	Year Open	Project Type	Square Feet	Teaching Spaces	Student Capacity	Construction Notice to Proceed	Construction Substantial Completion
E-44	2023	New ES	122K	54	716	FEB 2022	MAY 2023

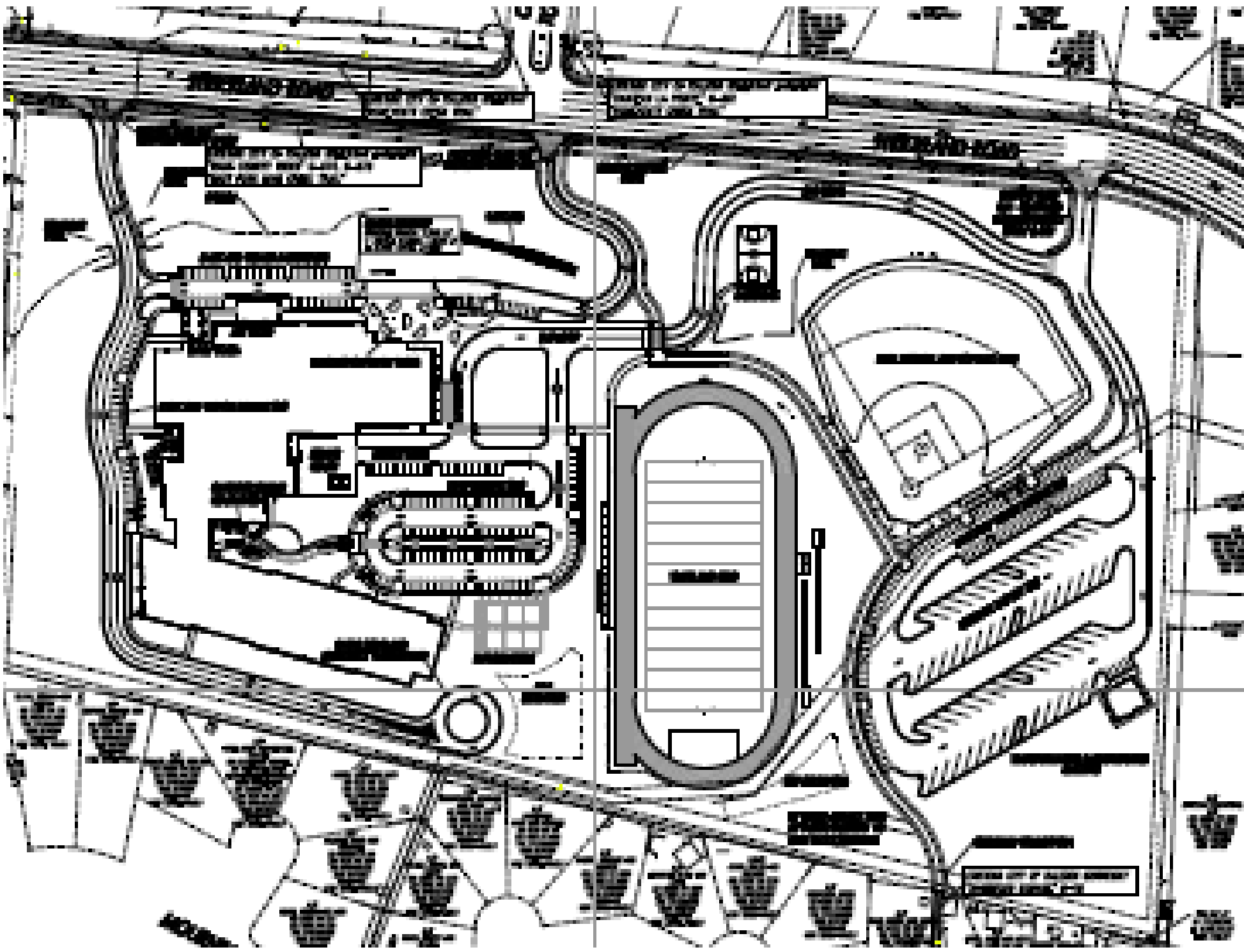


School	Year Open	Project Type	Square Feet	Teaching Spaces	Student Capacity	Construction Notice to Proceed	Construction Substantial Completion
H-12	2024	New HS	354K	112	2,240	FEB 2022	JUNE 2024



# Project Summary / West Millbrook MS [Construction] (3 of 6)

School	Year Open	Project Type	Square Feet	Teaching Spaces	Student Capacity	Construction Notice to Proceed	Construction Substantial Completion
W Millbrook MS	2022	RENO	225K	81	1,280	AUG 2020	MAY 2022



# Project Summary / Swift Creek Elementary [Design] (4 of 6)

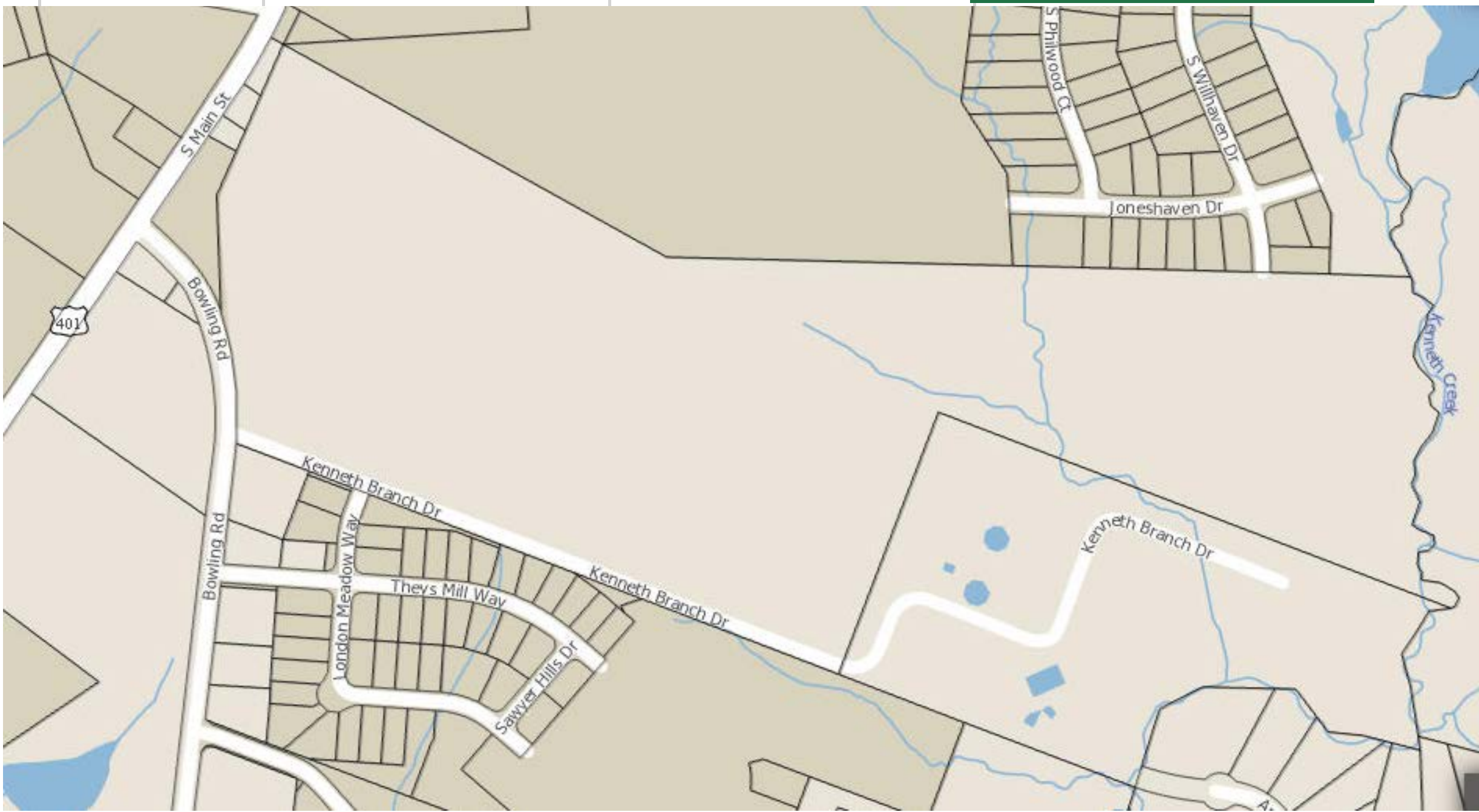
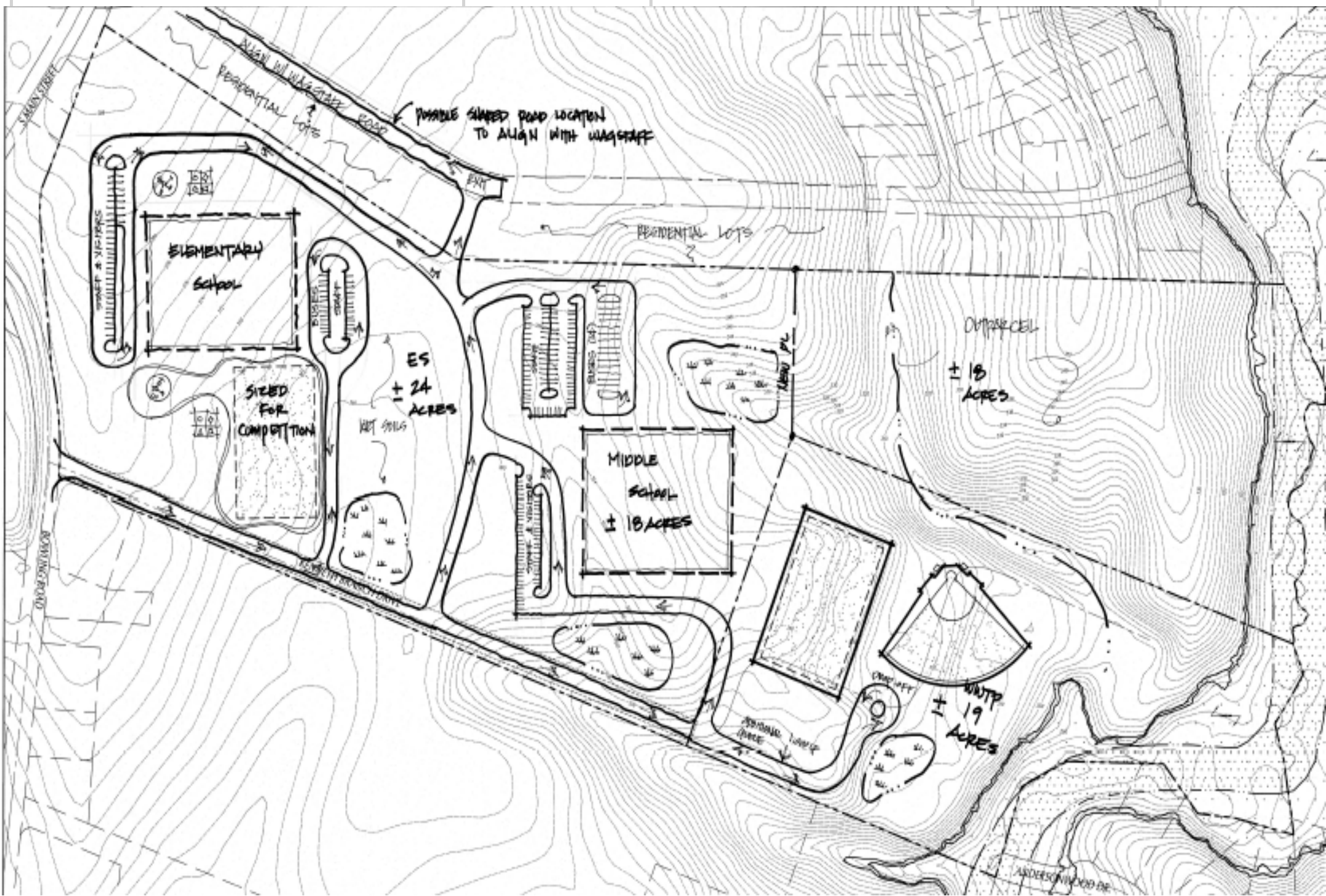
School	Year Open	Project Type	Square Feet	Teaching Spaces	Student Capacity	Construction Notice to Proceed	Construction Substantial Completion
Swift Creek	2024	Major Reno	122K	54+2	716/20	FEB 2023	MAY 2024





Project Summary / Fuquay-Varina MS [Design] (5 of 6)

School	Year Open	Project Type	Square Feet	Teaching Spaces	Student Capacity	Construction Notice to Proceed	Construction Substantial Completion	Remarks
Fuquay Varina MS	2024	NEW (relocation)	180K	62	936	AUG 2022	MAY 2024	(Shared Campus)





# Project Summary / York Elementary [Construction] (6 of 6)

School	Year Open	Project Type	Square Feet	Teaching Spaces	Student Capacity	Construction Notice to Proceed	Construction Substantial Completion
York ES	2021	Major Reno	119K	46+2	636/20	APR 2020	OCT 2021



# Program Summary / Item Description (1 of 2)

## Program Elements:

### Life Cycle (Building/Site):

- Washington ES - Gym HVAC
- Wake Forest HS - Stadium Bleacher Replacement & Track Repair/Replacement
- Brassfield ES – Concrete Foundation Repair/Replacement
- Life Cycle Furniture Replacement
- Other Projects Currently Being Planned and Prioritized

### Educational Equipment:

- 50% - Computer Equipment
  - Laptop Carts and Laptops
  - Projector/Screen Professional Learning/Facilitative Equipment for HS Auditoriums
- 50% - Academic Equipment
  - Science Lab Equipment
  - Music Equipment and Instruments
  - Performing Arts Stage Equipment
  - Career and Technical Equipment
  - Sound/Lighting Upgrades

# Program Summary / Item Description (2 of 2)

## Program Elements:

### Technology Infrastructure:

- 30% - Wireless Network Expansion
- 30% - Backup Power Issues for Critical Network Links
- 20% - Network Cabling Upgrades
- 20% - Remediate First Responder Radio Coverage Issues

### Security:

- 64% - Security Camera Upgrade to IP
- 21% - S2 Security Global Access Control
- 10% - Visitor Management System
- 5% - Video Management Software migration from IP Configure to Orchid/Fusion