

PLANWake Comprehensive Plan

Wake County Board of Commissioners
November 12, 2019



@wakegov



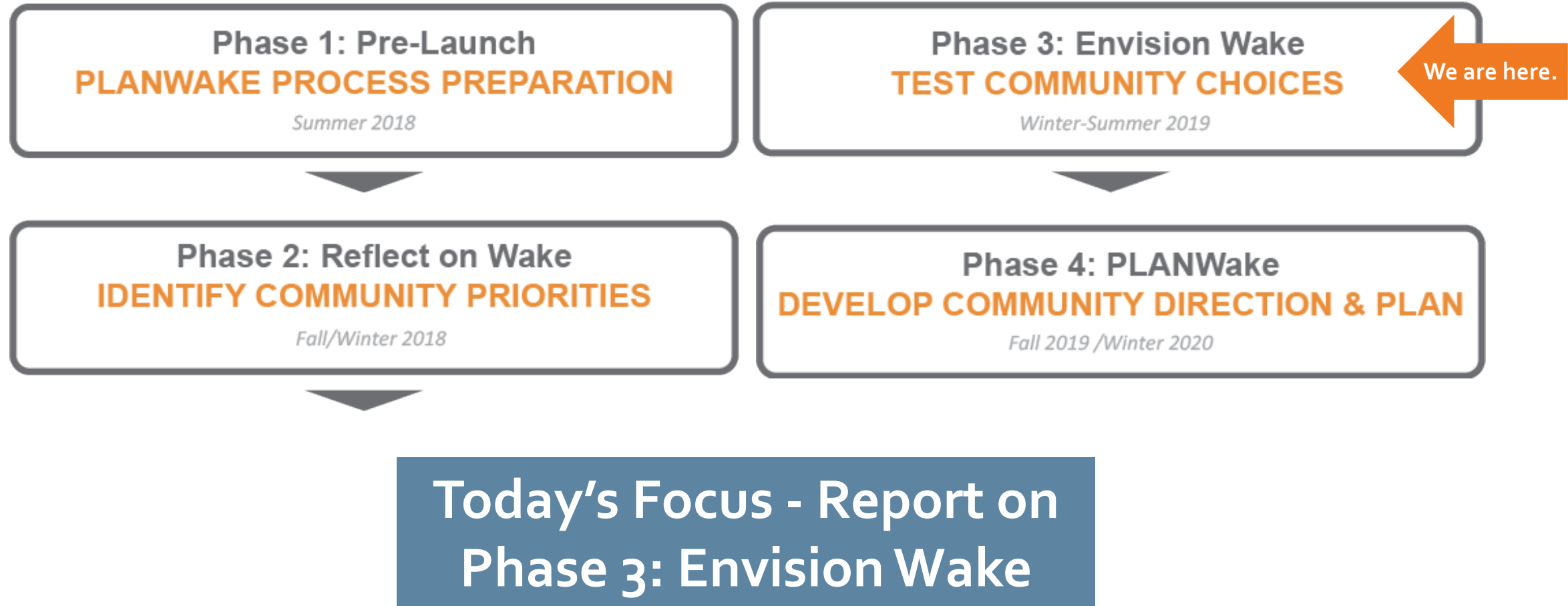
wakegov.com

What We Will Share Today

1. PLANWake Public Feedback
2. PLANWake Vision & Goals Framework for Consideration
3. Growth Approach Ideas for Consideration



Where We Are in the Process



PLANWake Public Feedback



**Community Priorities
Policy Directions
Further Testing (Growth Approach)**

Outreach By the Numbers (Surveys 1 & 2)

150,000+

Polling inputs and comments

100+

Public events

8,800+

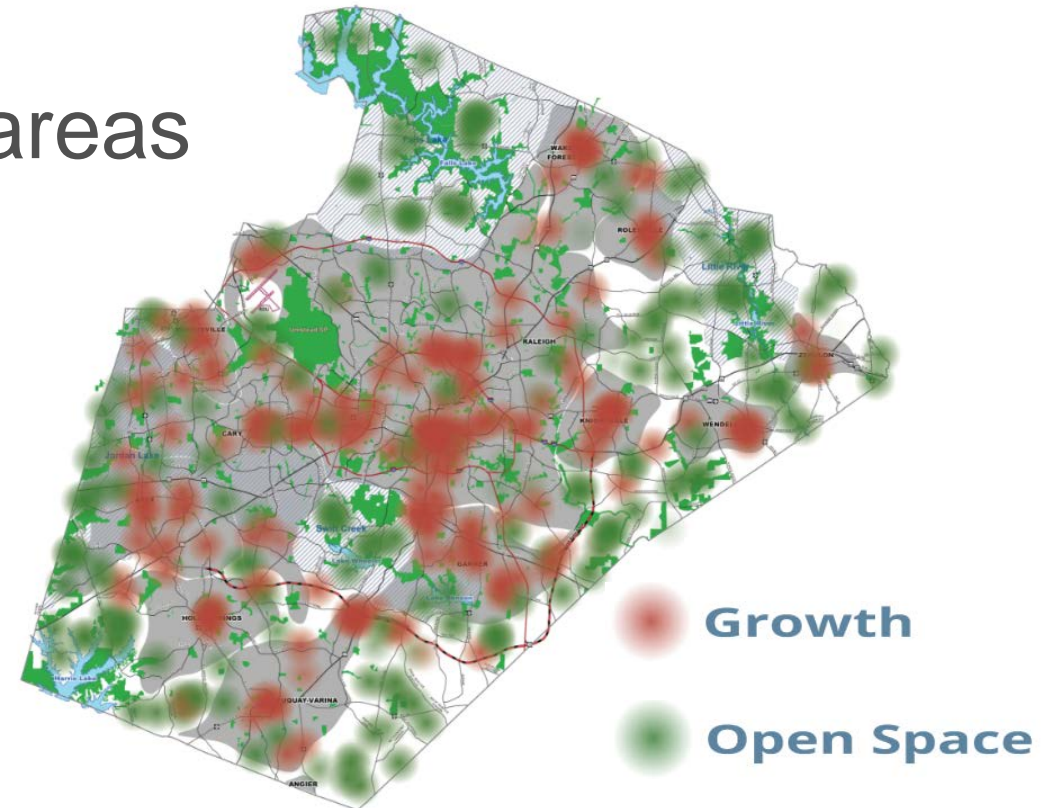
Surveys completed

40+

Stakeholder meetings

Community Priorities: Survey #1

- Significant change is needed to plan for growth
- Protect open space and natural areas
- Direct growth to towns
- Create walkable environments



What Residents Told Us - Examples

Survey #1

- Most important to provide high quality schools and educational opportunities
- 3rd highest concern is growing cost of living, including housing

Survey #2

73% - Neighborhoods should be affordable for all

84% - County should focus on ensuring all have opportunities to prosper

Inclusive & Equitable

What Residents Told Us - Examples

- 88%** - Need to focus on providing choices for moving around
- 94%** - Ensure all modes of travel (walk, bike, drive, etc.) are safe
- 92%** - County should consider health when making development choices
- 94%** - Need to eliminate environmental concerns like water contamination

Healthy & Active

What Residents Told Us - Examples

- 75% - Identify future locations for housing and commercial centers**
- 74% - Keep some areas rural by limiting housing and commercial growth**
- 71% - Don't accept the loss of special places and environments to growth**
- 91% - Create a green space network linking cultural and natural features**
- 93% - Plan for, protect, and preserve resource capacity (water, energy, sewer)**
- 74% - Concerned that resources will be impacted by growth**

Sustainable & Vibrant

PLANWake Key Vision Outcomes

Wake County will be...

INCLUSIVE AND EQUITABLE

HEALTHY AND ACTIVE

SUSTAINABLE AND VIBRANT

But What About Specific Policies?

- There is agreement about the policy direction we need to be heading toward
- There are differing opinions about how to get there and these will be tested further in Survey #3
- Comprehensive Plan will need to use a suite of goals/tools that balance policy tradeoffs
- Continued discussions are important for getting the balance “right”
- Opportunity to educate residents and stakeholders on benefits and tradeoffs of tools

Next Steps: Survey #3


INTRODUCTION

PlanWake Participate Part 3

PlanWake: Guiding Our County's Future


PLANWake is a process to assess the big questions, renew the community's vision and goals on a range of issues, and outline a path to success for the coming decade. This survey #3 focuses on strategies for policy and decision-making.

[Study Area Map](#) [Language](#) [Begin](#)



• • •

If you would like to read a bit more about planning for Wake County's future, [click here](#).



2 PRIORITY RANKING

3 STRATEGY RATING

4 SCENARIO RATING

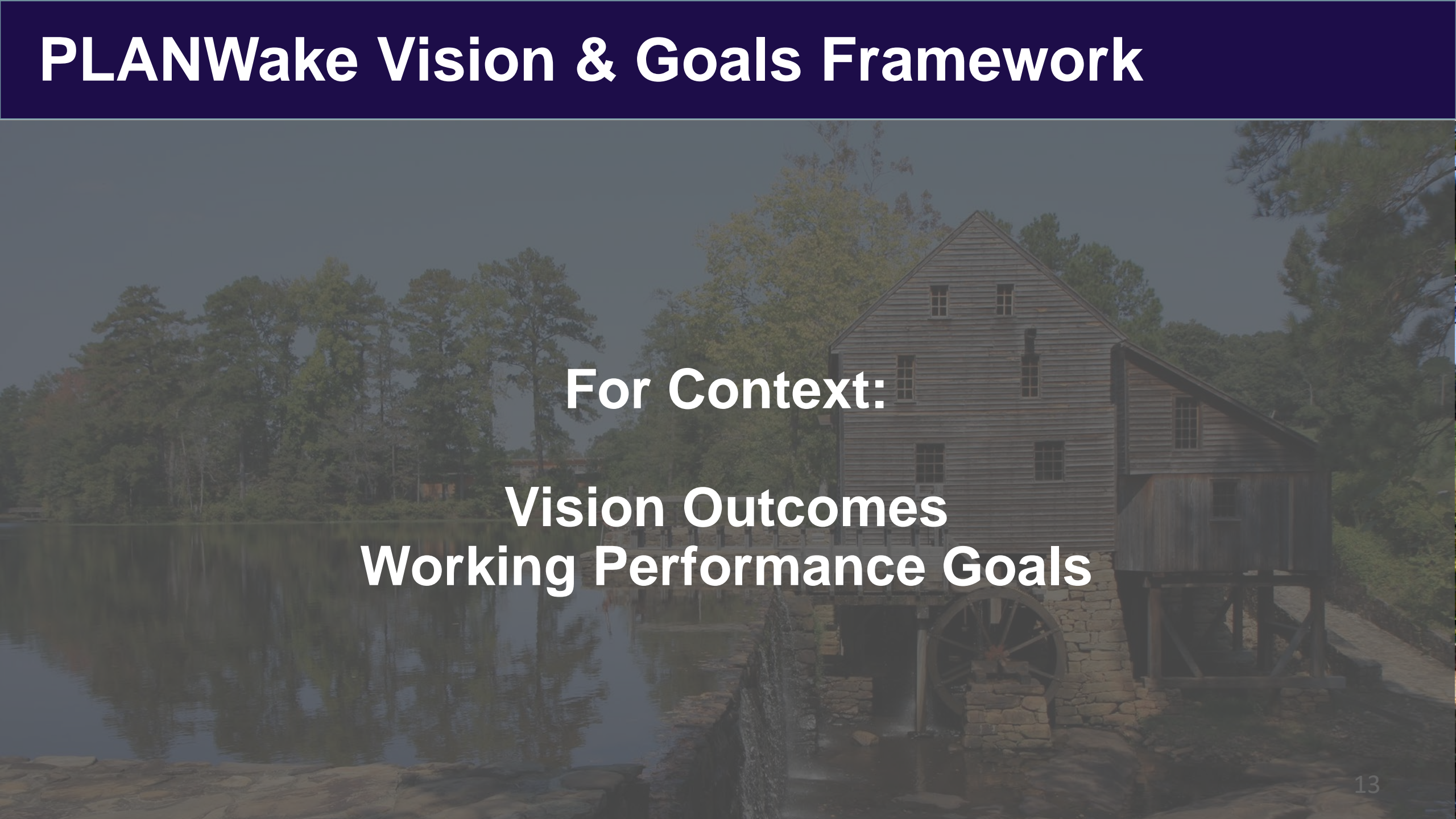
5 WRAP UP

[Help](#) [Privacy](#) [About MetroQuest](#)

Focus on Growth and Conservation

Testing Growth Alternatives and Policy Directions

PLANWake Vision & Goals Framework



For Context:
Vision Outcomes
Working Performance Goals

PLANWake Purpose

PLANWake Will be Wake County's Highest Policy and Action Guide for Decision-Makers.

- Growth Management
- Economic Development and Social Equity
- Transportation and Connectivity
- Built Environment
- Public Services and Facilities
- Resource Protection

PLANWake Timeline

PLANWake Will Consider the Long-Term and Focus on Achievable Actions for the Next 10 Years.

Actions



2030

Vision



Long-Term



PLANWake Key Vision Outcomes



Inclusive and Equitable

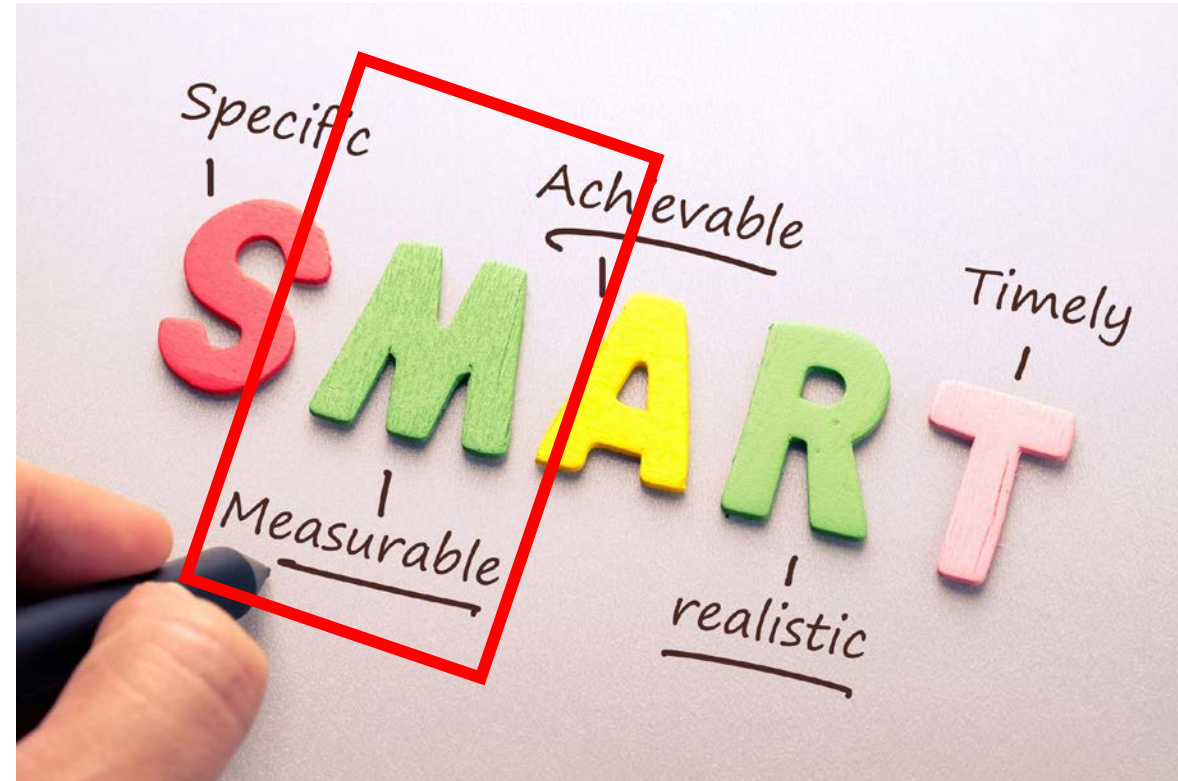
Healthy and Active

Sustainable and Vibrant



Establishing the Framework for Outcomes

- Past Wake County Plans have been thoughtfully crafted but lacked measurable goals for tracking progress
- Result is a plan with strong policy direction that doesn't identify concrete action
- Successful plans are SMART plans



Avoiding Pitfalls in Setting Measurable Goals

- Too many measures
- Can't measure the metric
- Metrics too detailed
- Metrics don't reflect desired change

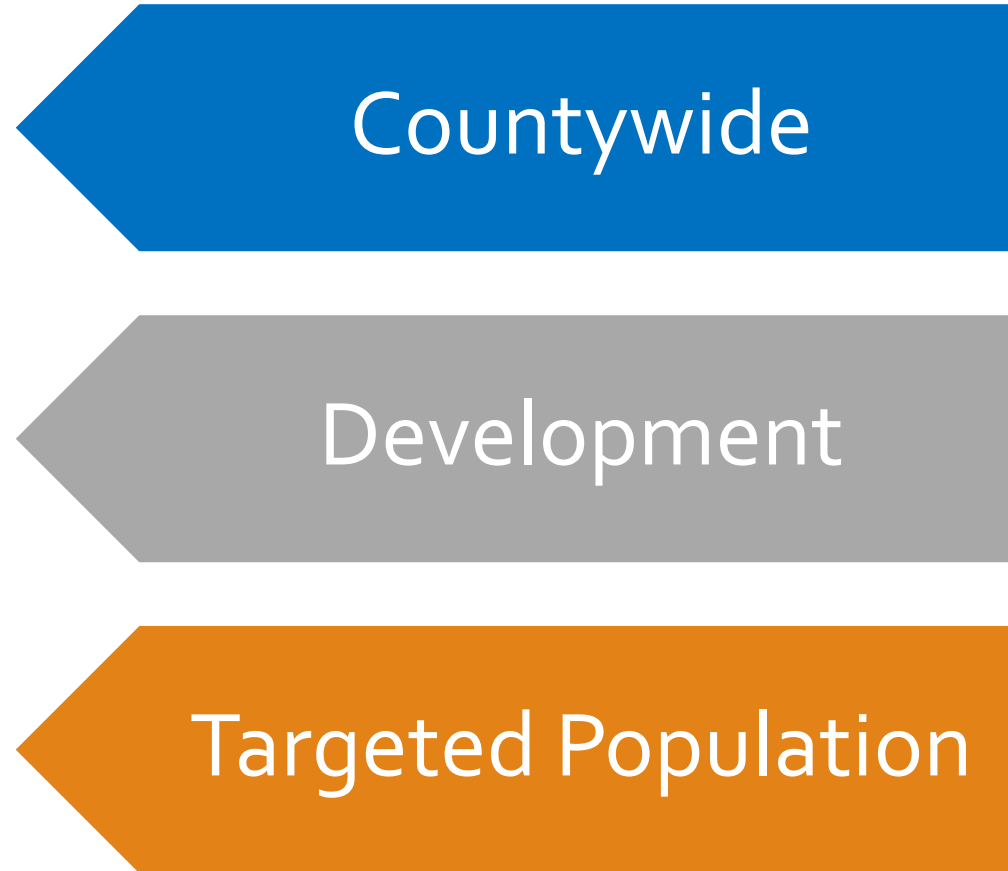


PLANWake Approach: Performance Goals

Performance Goals will be designed to:

- **Provide a targeted # of metrics for evaluating performance**
- **Relevant across County Departments and Services**
- **Relevant across PLANWake Vision Outcomes (systems approach)**
- **Reflect multiple impacts on the community**

PLANWake Approach: Performance Goals



Countywide Working Performance Goals

- **Increase travel options and reduce car-dependence**
- **Decrease population experiencing severe housing problems**
- **Achieve goal of 30 percent protected open space**



Countywide

Development Working Performance Goals

- **Increase population and job growth in places with access to transit**
- **Maintain and expand tree canopy as part of new development**



Development

Targeted Population Working Performance Goals

- **Reduce the % of households burdened by the cost of housing and transportation**
- **Expand access to services for vulnerable populations**



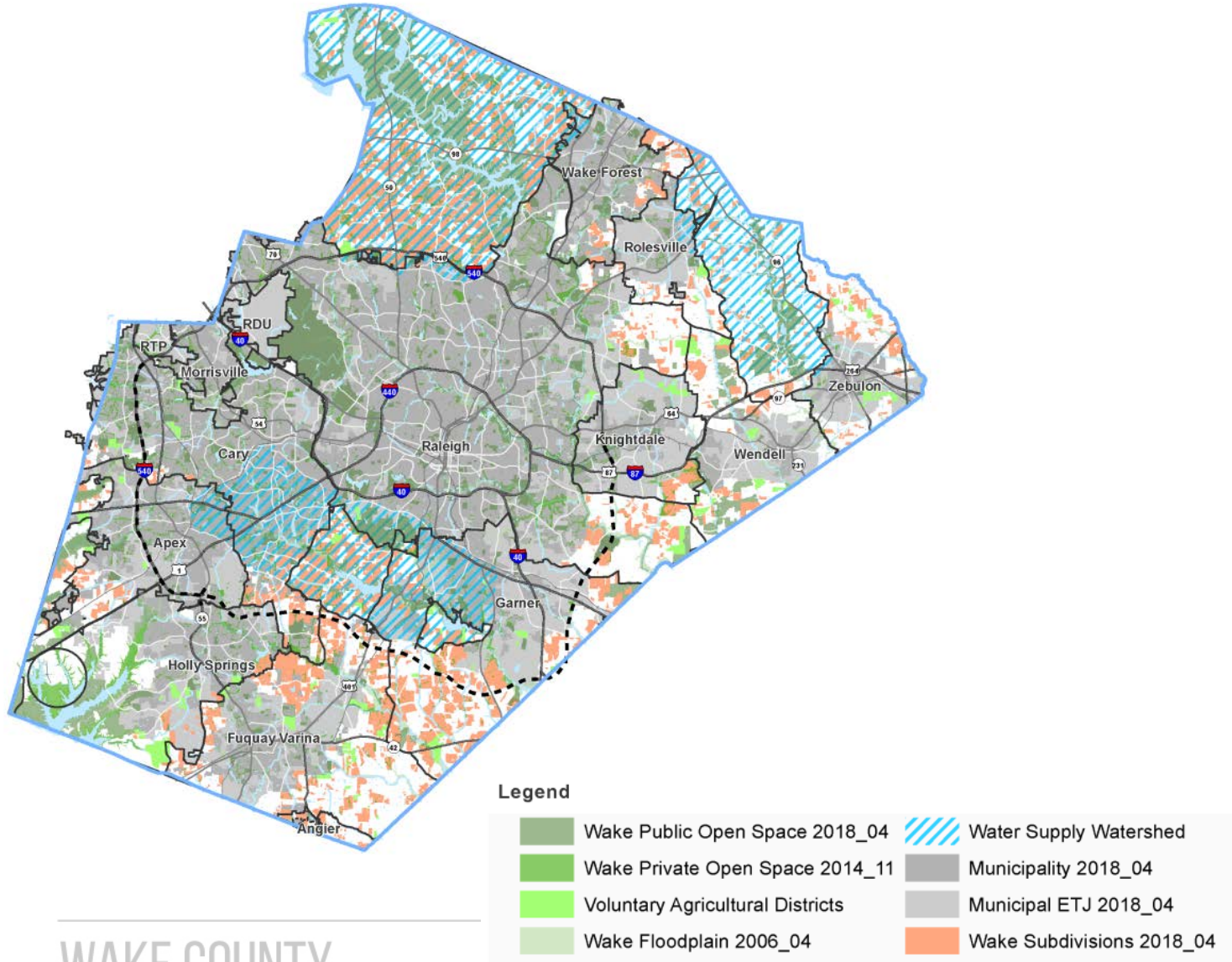
Targeted Population

Growth Approach Ideas

A large, multi-story wooden mill with a prominent water wheel is situated on a rocky bank next to a calm river. The mill has a steep gabled roof and several windows. The water wheel is partially submerged in the river. The surrounding area is lush with tall pine trees and other foliage. The scene is peaceful and scenic.

**For Consideration:
Intentional Growth Approach**

PLANWake Testing Growth Alternatives



What We've Learned:

Growth in County Subdivisions is Not Achieving Four Priorities & Creates Challenges for Long Range Municipal Planning

Challenges to Maintaining and Promoting:

- Cohesive land use, design, and connectivity
- Providing municipal utilities around and among county areas
- Providing municipal services in areas with fragmented jurisdictions

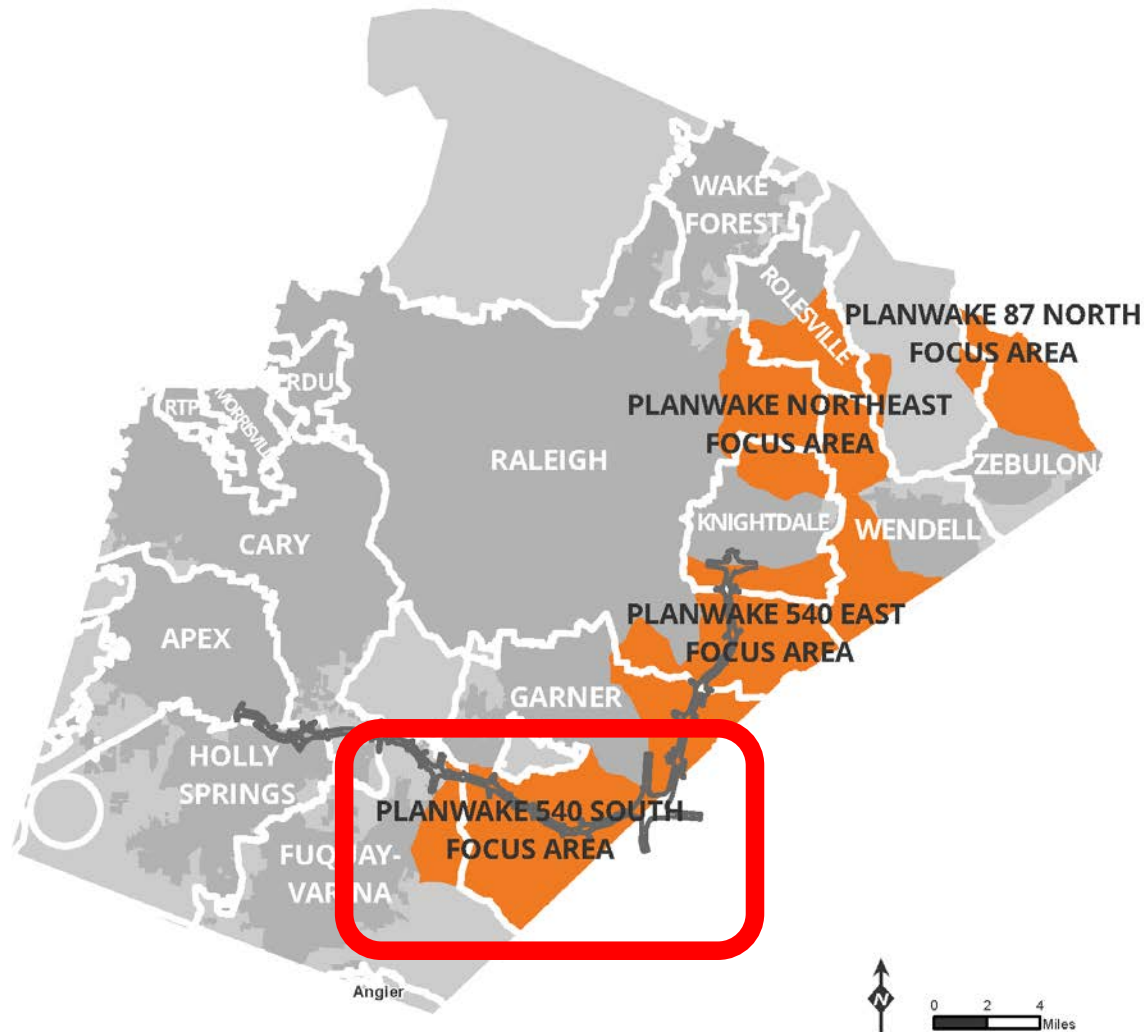
PLANWake Testing Growth Alternatives

Testing Growth Alternatives: PLANWake Focus Areas

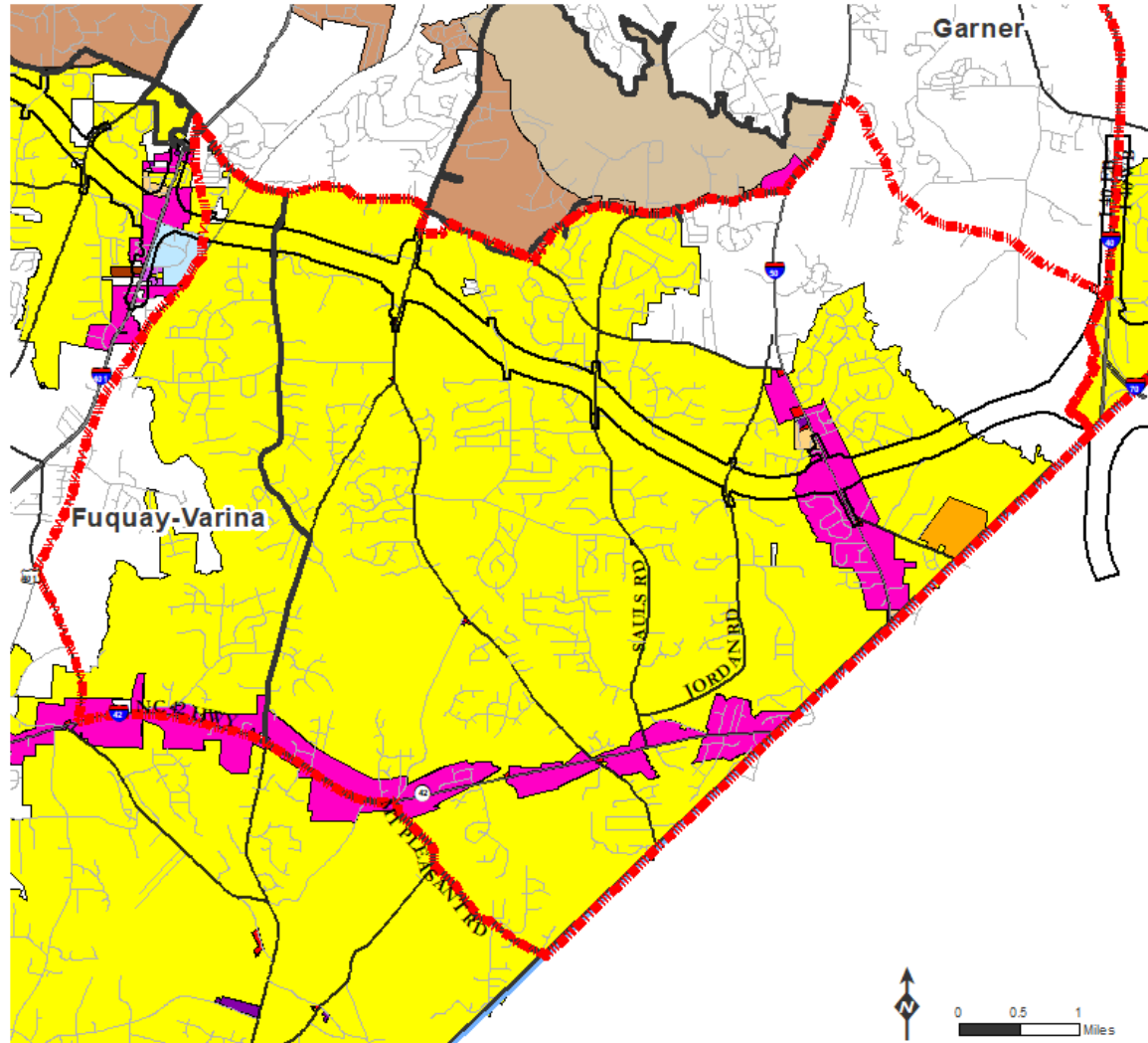
Areas for testing a different
growth management approach

- Focused testing - Plan to apply Countywide
- Models for other areas

White lines show municipal urban services boundaries



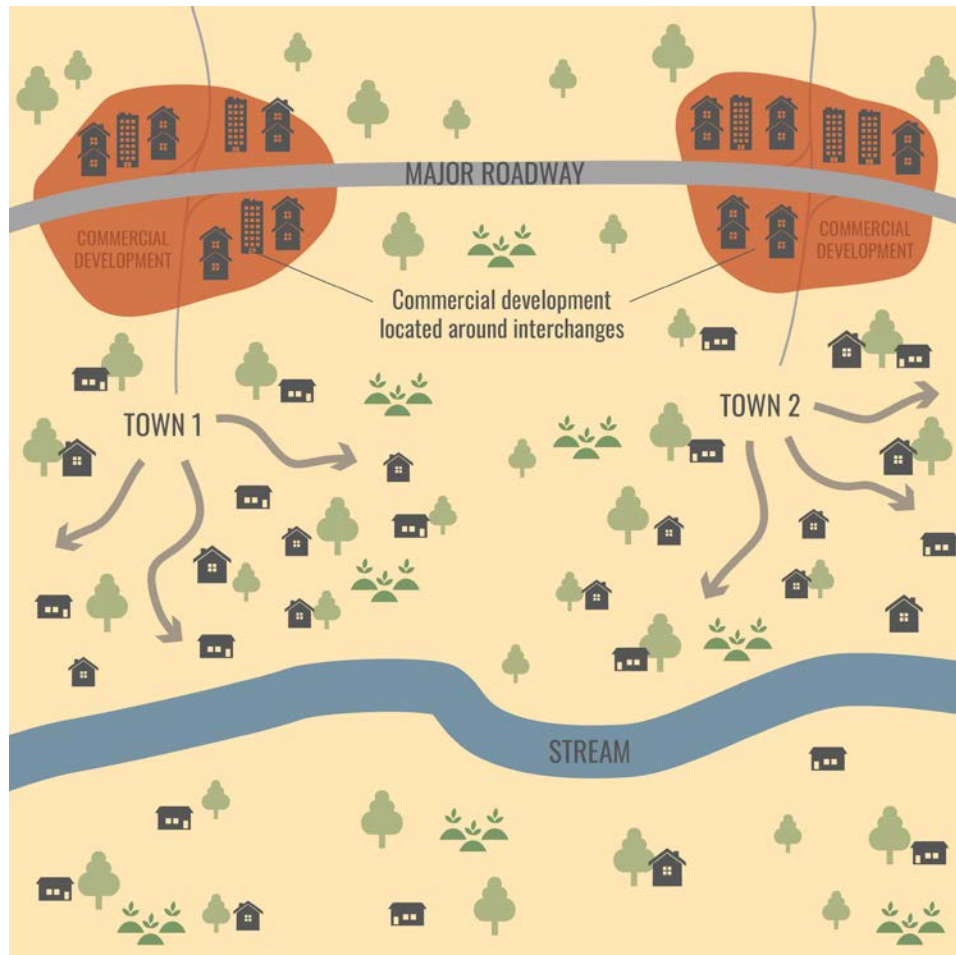
PLANWake Testing Growth Alternatives



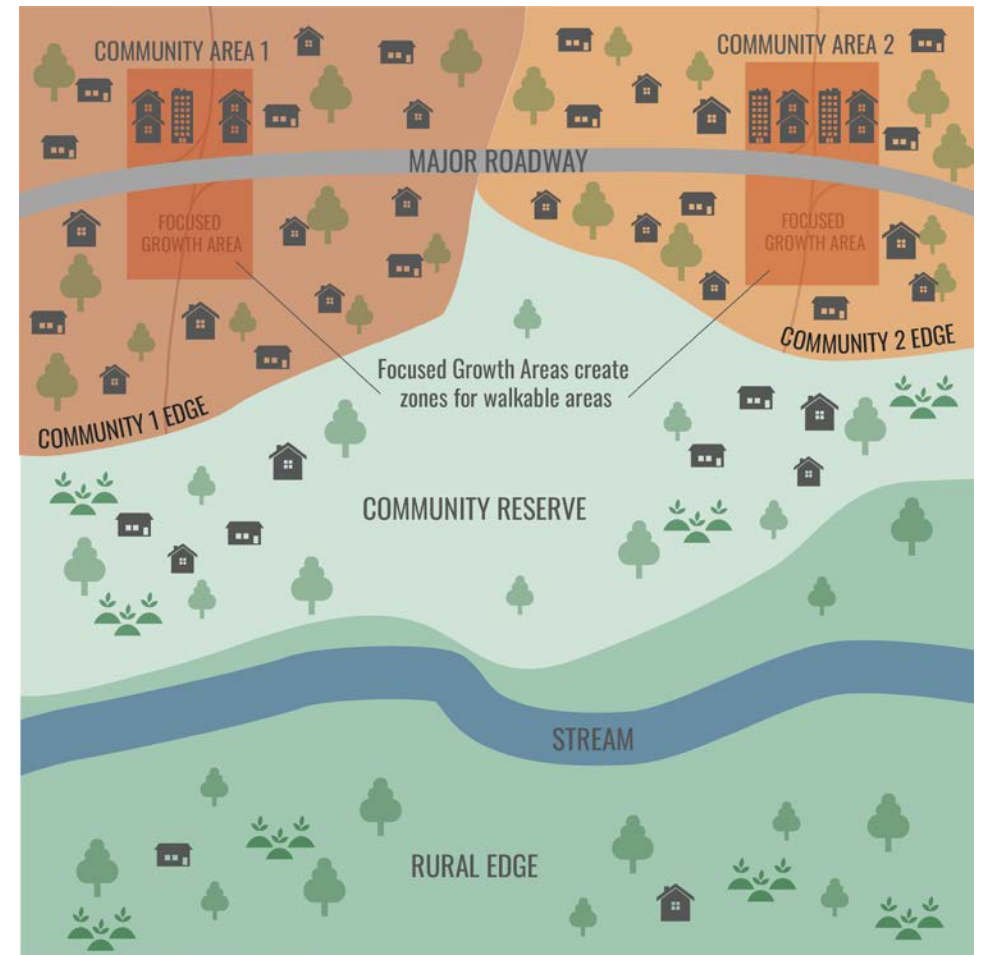
**1 home per
30,000 sq ft**

PLANWake Testing Growth Alternatives

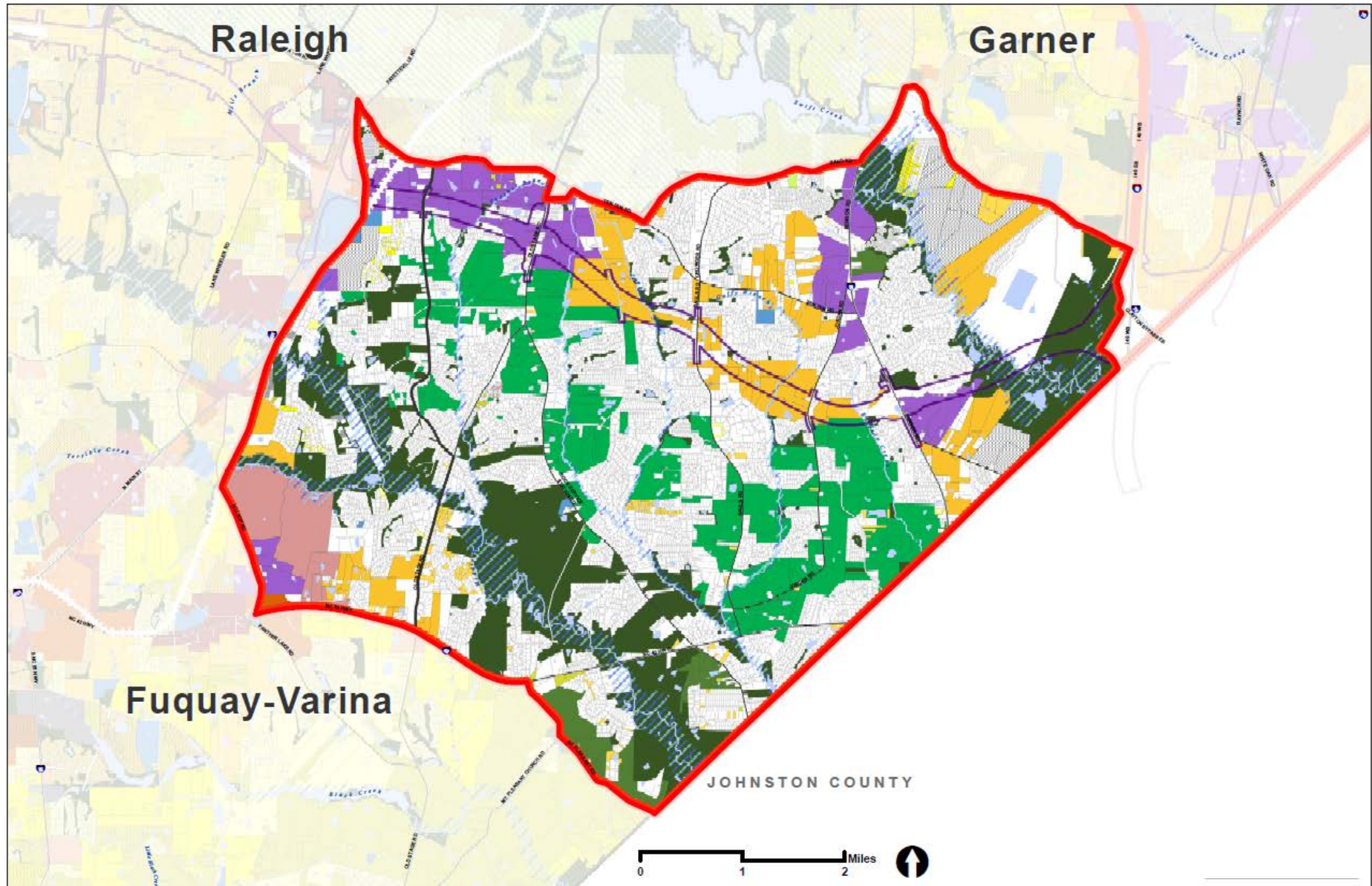
GA 1: Dispersed Growth



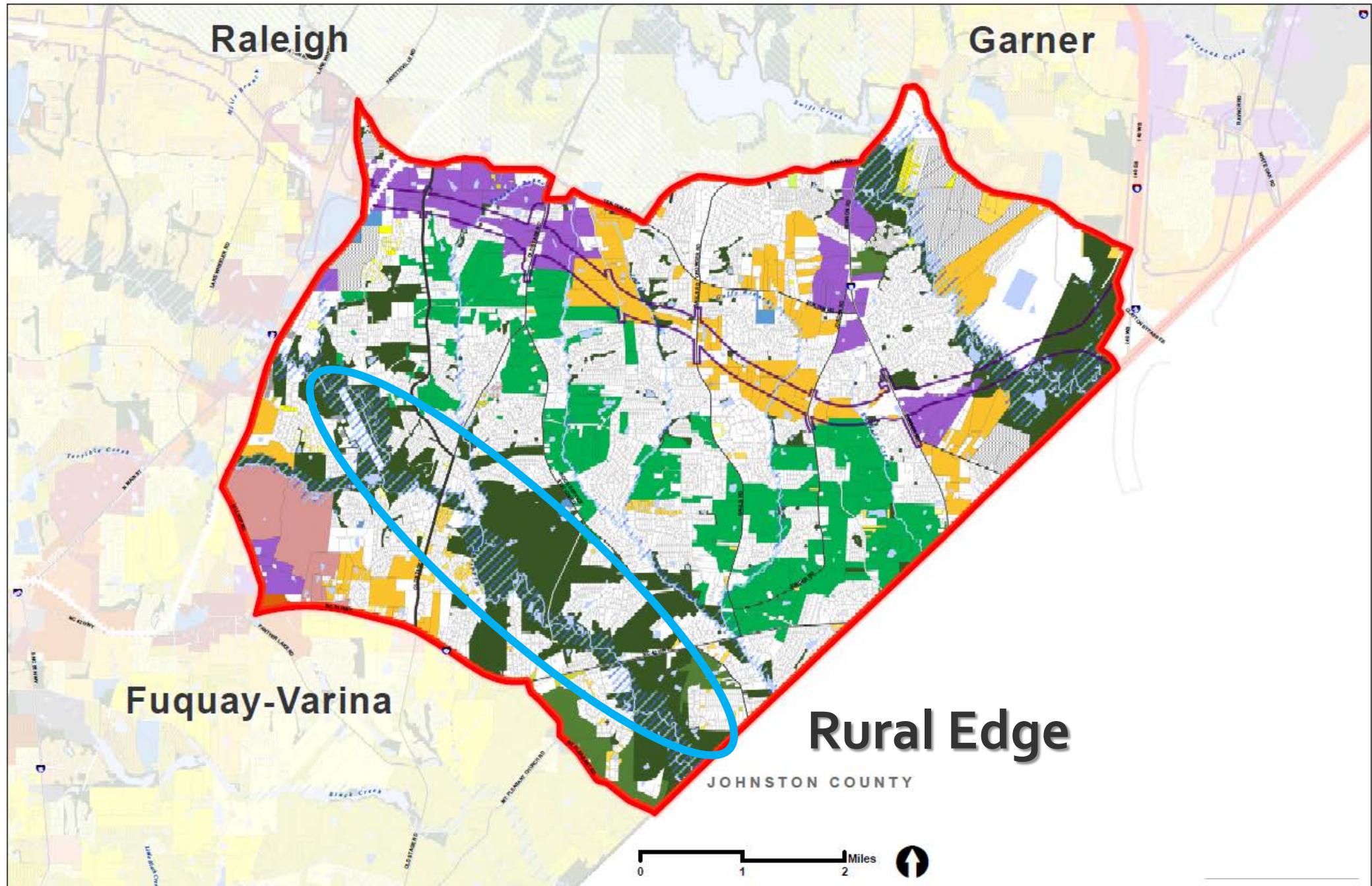
GA 2: Intentional Growth



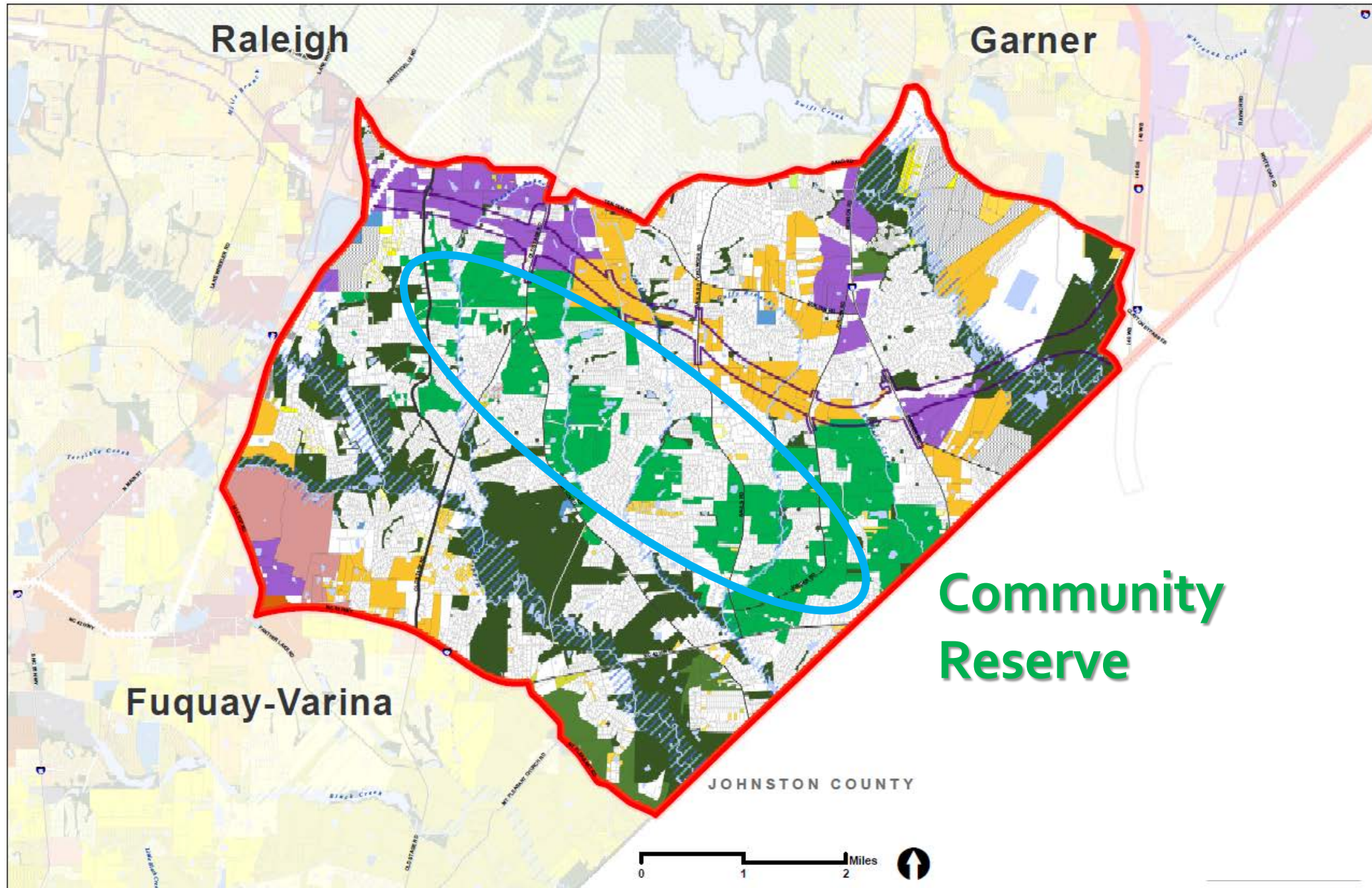
PLANWake 540 South - Growth Alternative #2



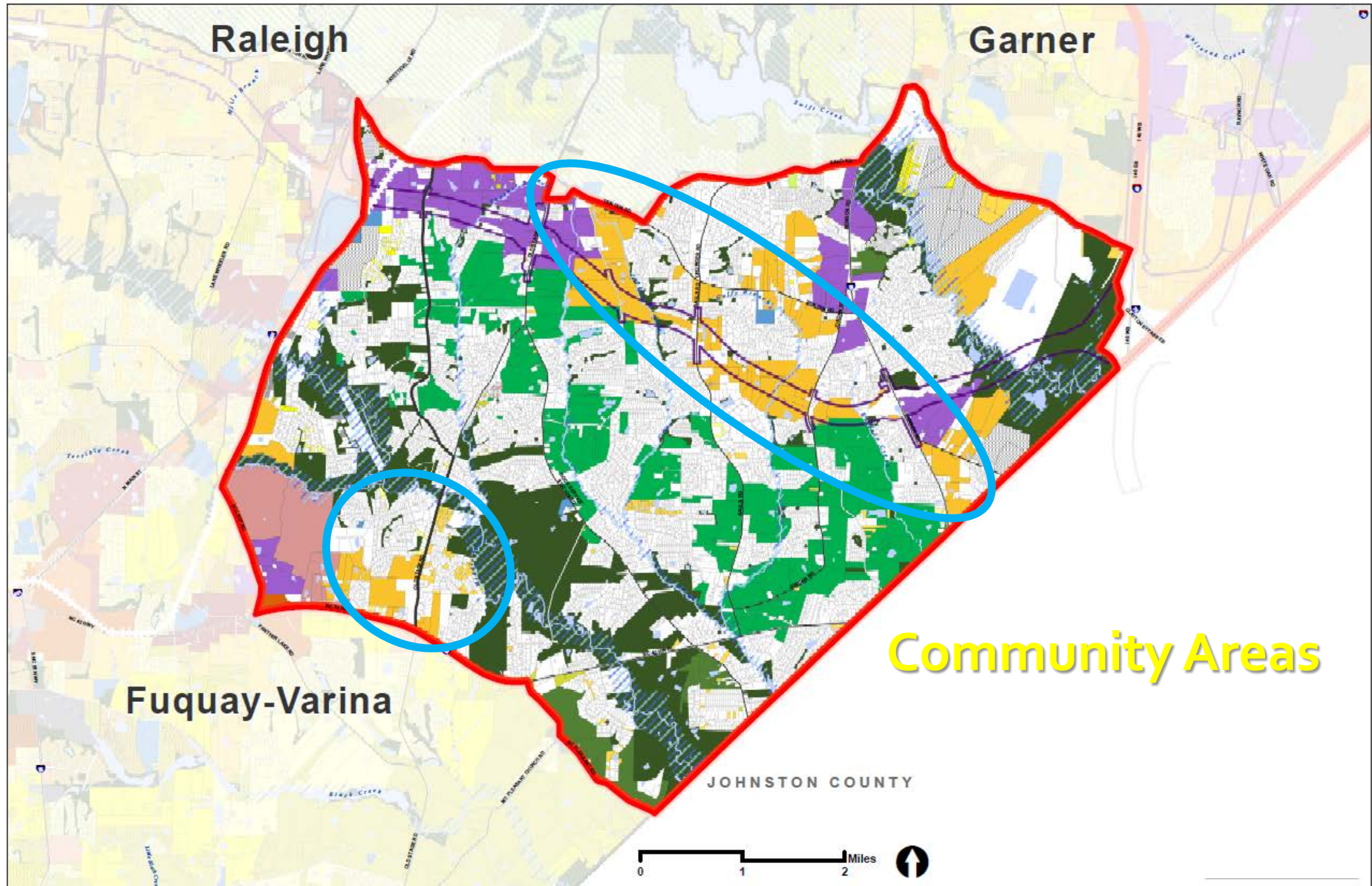
PLANWake 540 South - Growth Alternative #2

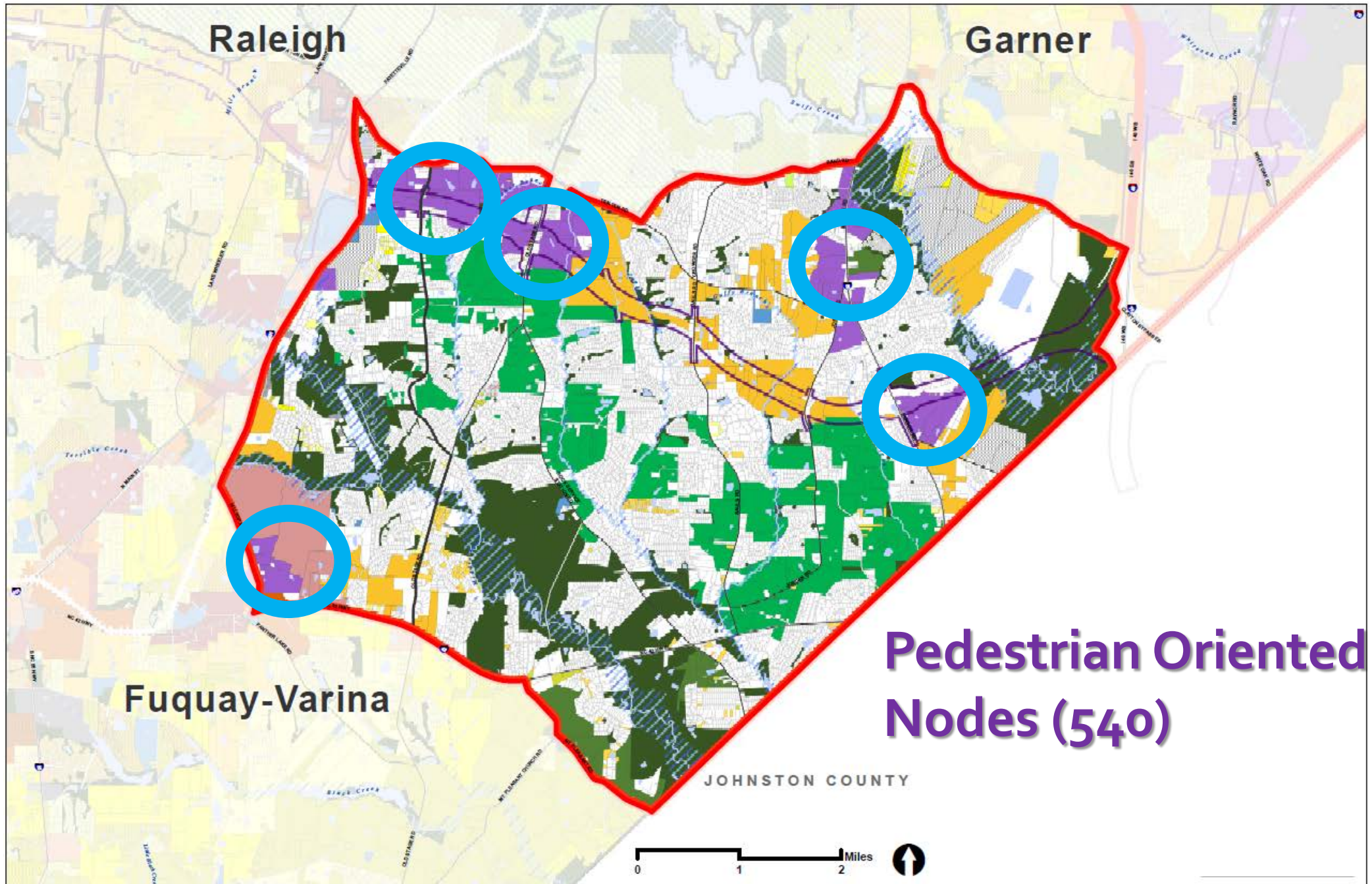


PLANWake 540 South - Growth Alternative #2



PLANWake 540 South - Growth Alternative #2





PLANWake Testing Growth Alternatives

Rural Edge

- Not needed to accommodate projected growth
- Prioritize Open Space / Ag Area Preservation through Partnerships
- Open Spaces “in use”
- Incentivize Set-Aside for Open Space (60%+)
- Unit yield equivalent may be lower than traditional subdivision



PLANWake Testing Growth Alternatives

Community Reserve

- Incentivize Set-Aside for Open Space (40%+)
- Unit yield equivalent to traditional subdivision
- Street design to match municipal standards
- Connectivity increased
- Limit approvals to projects meeting standards



PLANWake Testing Growth Alternatives

Community Areas

- **Municipal or “Municipal Ready” Development**
- **May Require More Time for Infrastructure Investments**
- **Connectivity Requirements**
- **Delay Approval for Annexation**



PLANWake Testing Growth Alternatives

Pedestrian Oriented Nodes

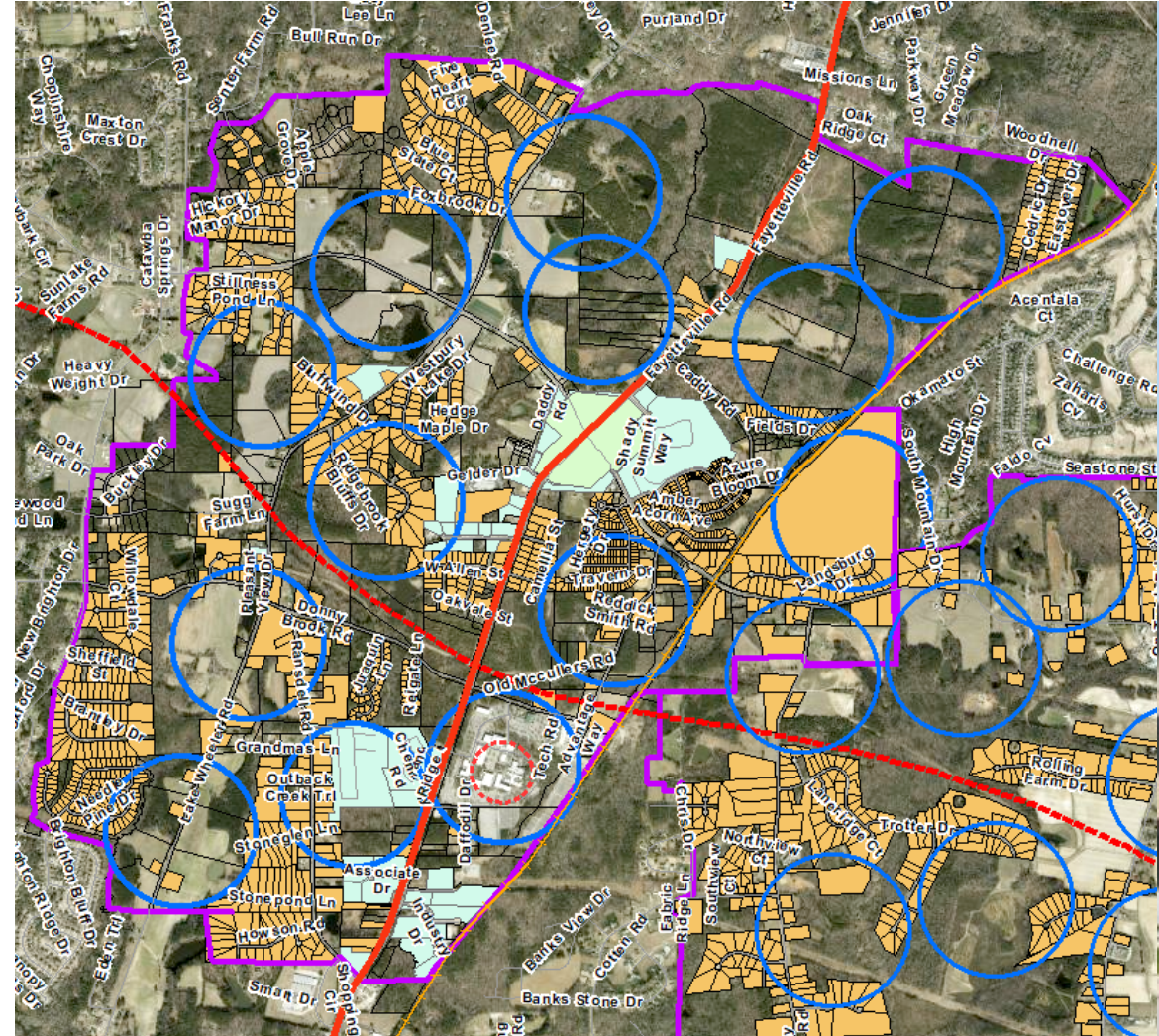
- Transit-Supportive Municipal Development
- May Require More Time for Infrastructure Investments
- Higher Standards for Connectivity and Density
- Delay Approval for Annexation



PLANWake Testing Growth Alternatives

Pedestrian Oriented Nodes (ex.)

- US 401 & NC 540
- 3,640 acres
- 100-acre PODs
- 3.5X size of downtown Raleigh





Discussion / Questions



Reference Slides

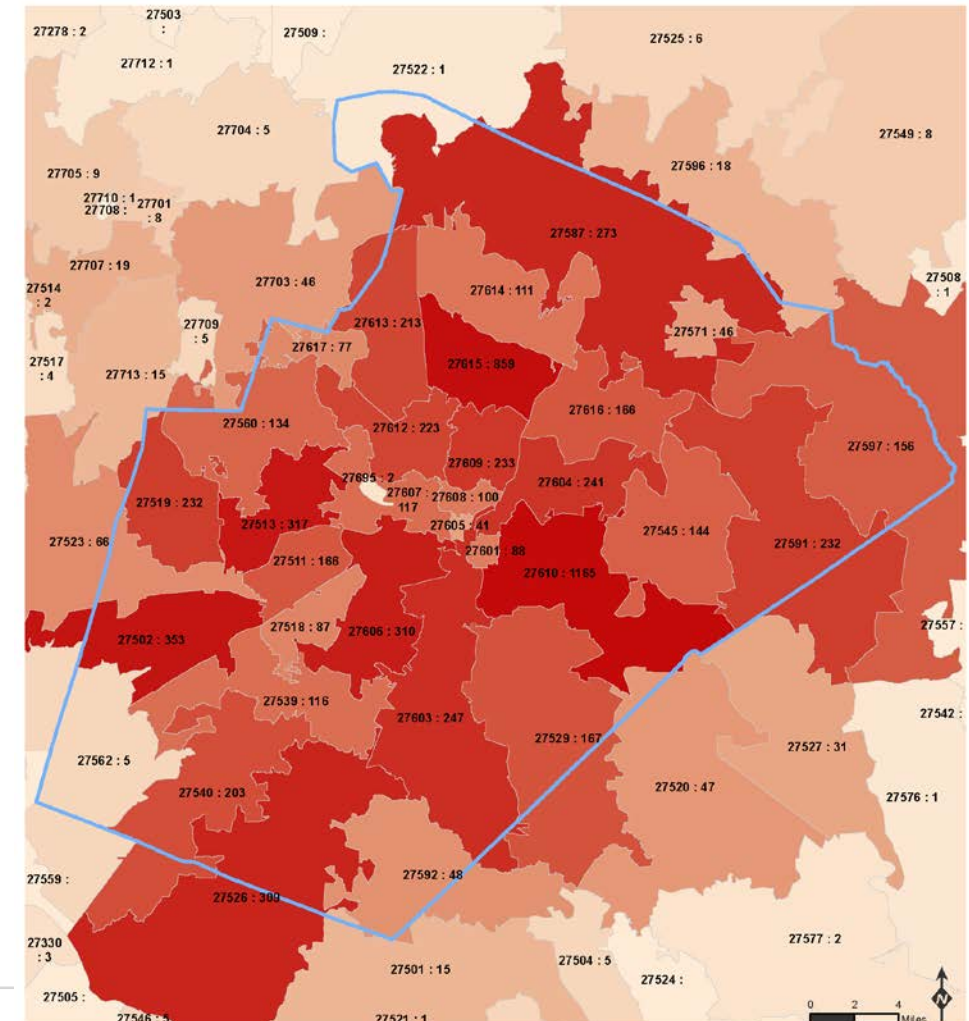
(as needed)

Who We Heard From – Survey #2

- 4,117 total participants
- Respondents represent all communities and demographics across Wake County
- Most owned their home (68%) or rented (25%)
- Ages 0-25 under-represented (11%)
ages (26-55) over-represented (64%)

PLANWake Survey Responses by Zip Code

Data pulled October 30, 2019



Point of Comparison

A statistically significant survey with a 99% confidence level and 3% margin of error for Wake County should have a sample size of...

n = 1,846

source : [surveymonkey.com](https://www.surveymonkey.com)

Survey #1 had a response capture of **4,682**

Survey #2 had a response capture of **4,117**

These surveys are not deemed statistically significant as respondents are self-selected and not randomly identified.

PLANWake Approach: Performance Goals Ex.

Ex. Goal: Reduce Vehicle Miles Traveled

- **More walking (healthy and active)**
- **Less driving (inclusive and equitable)**
- **Fewer greenhouse gases (vibrant and sustainable)**
- **Less parking (vibrant and sustainable)**

PLANWake Approach: Performance Goals Ex.

Ex. Goal: Reduce % of households burdened by the cost of housing and transportation

- **More resources for healthcare (healthy and active)**
- **More resources for ending cycle of poverty (inclusive and equitable)**
- **More resources for local spending (vibrant and sustainable)**