

Item Title: Conveyance of Stormwater Access and Maintenance Easement to the City of Raleigh for the Oak City Multi-Services Center

Specific Action Requested:

That the Board of Commissioners approves the conveyance of a Stormwater Access and Maintenance Easement to the City of Raleigh at the Oak City Multi-Services Center along with any other supporting documentation, subject to the terms and conditions acceptable to the County Attorney.

Item Summary:

Purpose: The Board of Commissioners must approve all easements conveyed by the County. NC General Statute 160A-274 authorizes the Board of Commissioners to convey any interest in real property to other governmental agencies.

Background: Wake County acquired the property located at 1430 South Wilmington Street, Raleigh, NC on May 20, 2017 for redevelopment into the Oak City Multi-Services Center in partnership with the City of Raleigh. The Oak City Multi-Services Center opened to the public April 8, 2019. As part of the project, a stormwater swale was constructed to collect, treat, and discharge water along the south property line. The City of Raleigh requires that access be provided to the stormwater treatment system by conveyance of a Stormwater Access and Maintenance Easement.

Board Goal: This action supports routine County operations.

Fiscal Impact: There is no fiscal impact to the County associated with this easement conveyance.

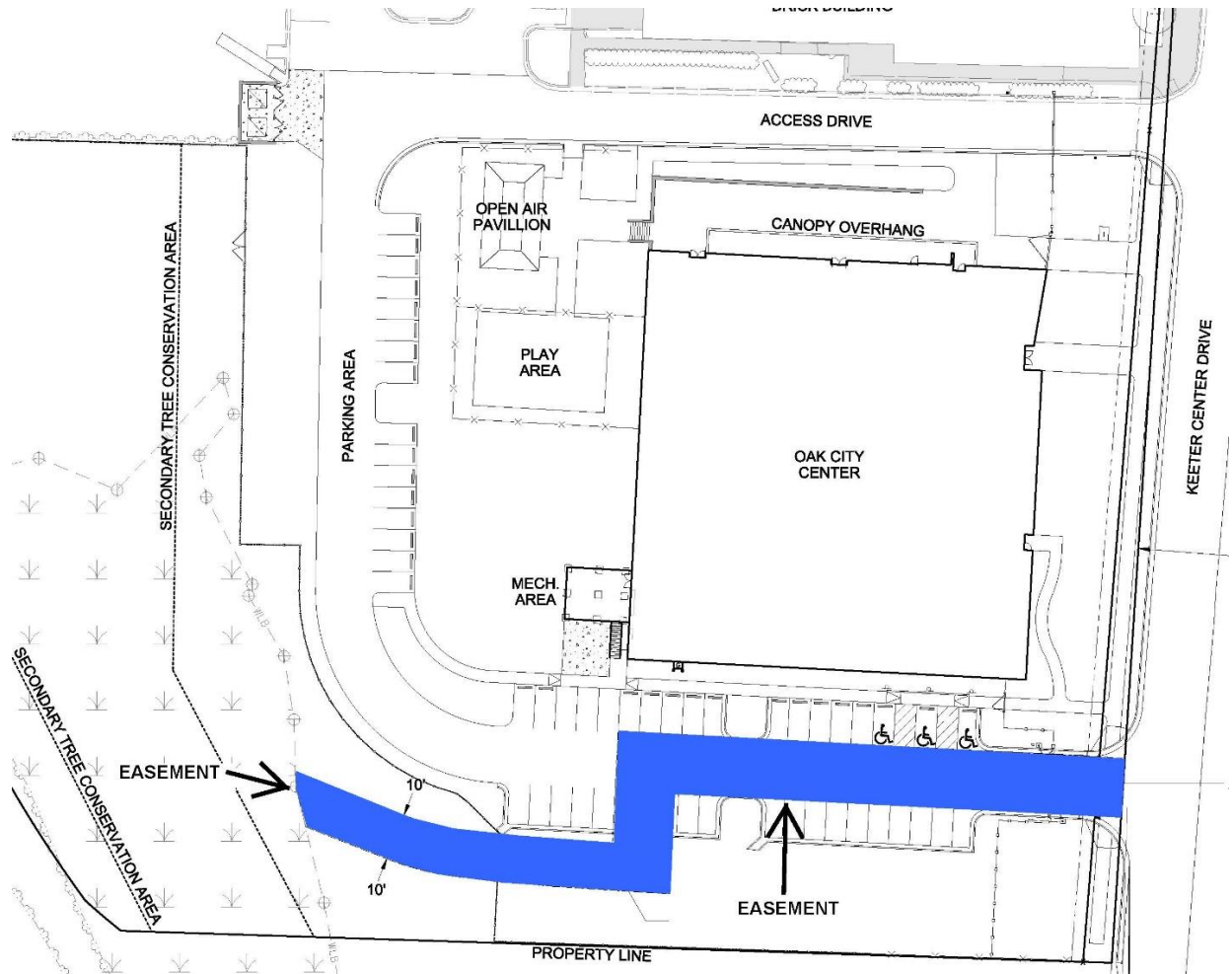
Additional Information:

The City of Raleigh requires a permanent stormwater access and maintenance easement upon the completion of the Oak City Multi-Services Center project. Contained within the easement is the stormwater treatment and quantity control swale that runs along the south property boundary. The access and maintenance easement will insure that the City of Raleigh is able to inspect and recommend repairs and maintenance for the facility on regular intervals. In addition, Wake County is responsible for annual certification of the stormwater device by a licensed professional engineer as is customary for other Wake County owned properties that utilize stormwater treatment devices.

A plan showing the easement area of .21 acres is included for reference below and the proposed Stormwater Access and Maintenance Easement plat is attached.

Facilities Design & Construction staff has reviewed the required easement and has concluded this conveyance will have no negative effect on the value and long-term use

of the County's property. Staff recommends approval of the easement conveyance to the City of Raleigh.



Attachments:

1. Proposed Easement Plat