



Enrollment Forecast

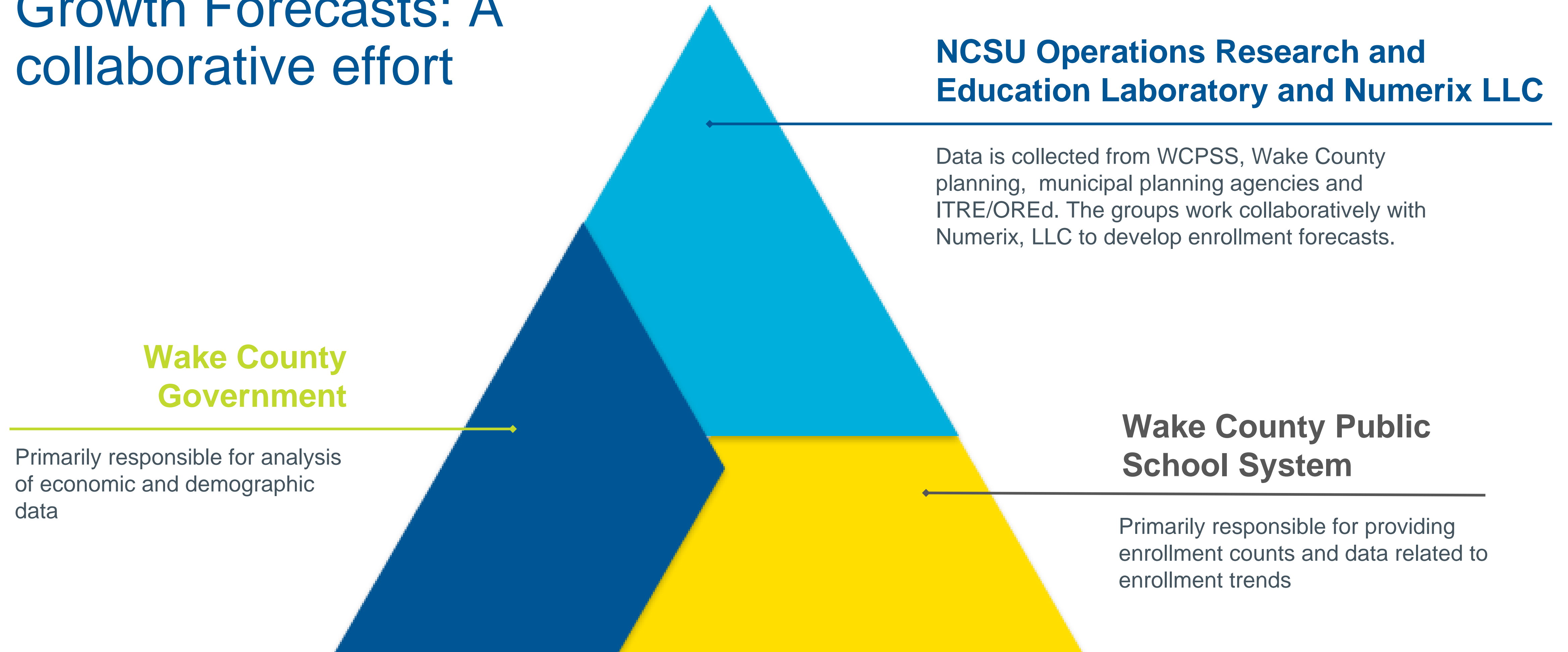
Lloyd Gardner, WCPSS Chief of Staff

Mike Miller, Numerix LLC

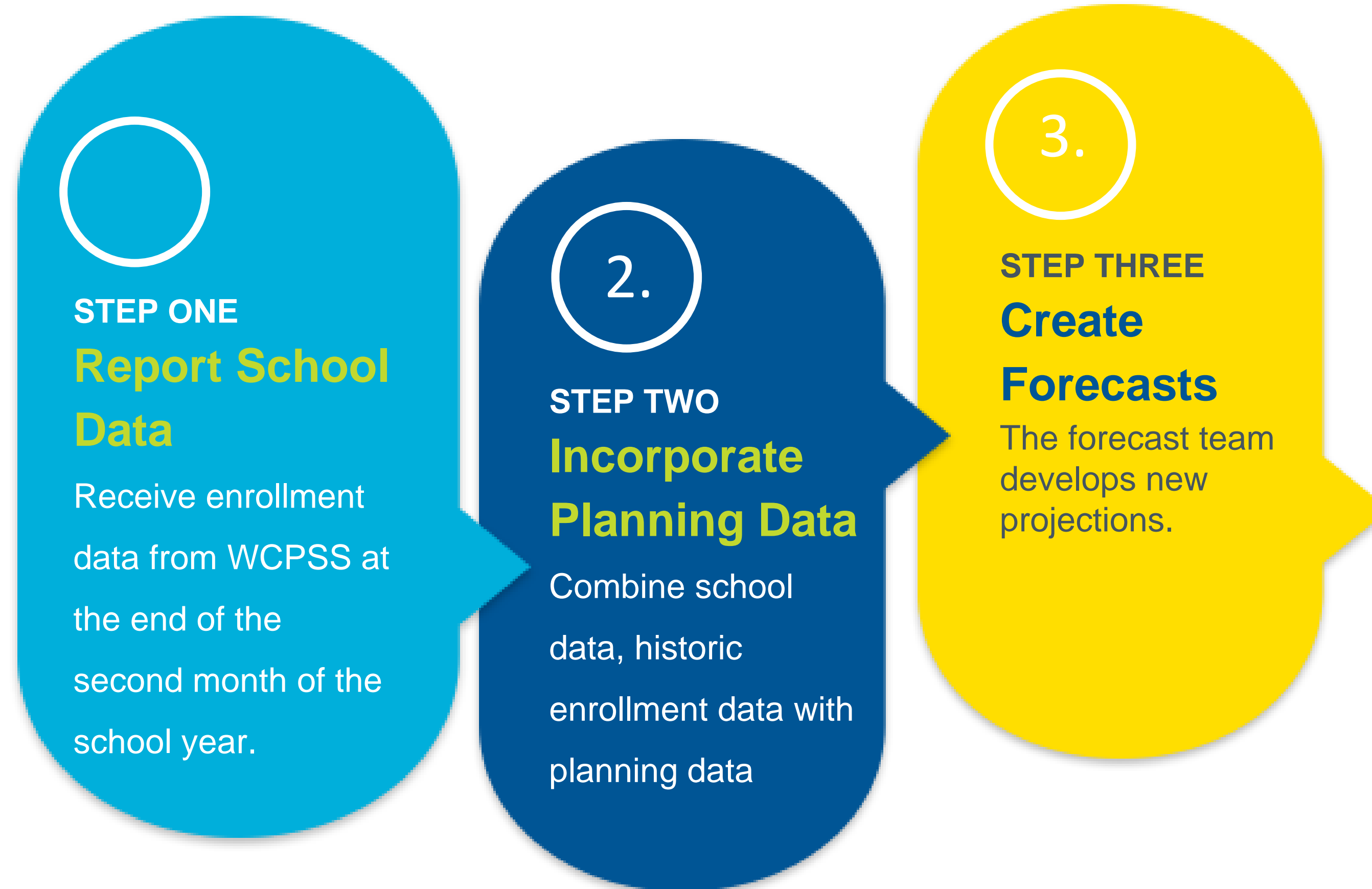
Emily Lucas, Wake County Government Chief Financial Officer

Jan. 8, 2018

Growth Forecasts: A collaborative effort

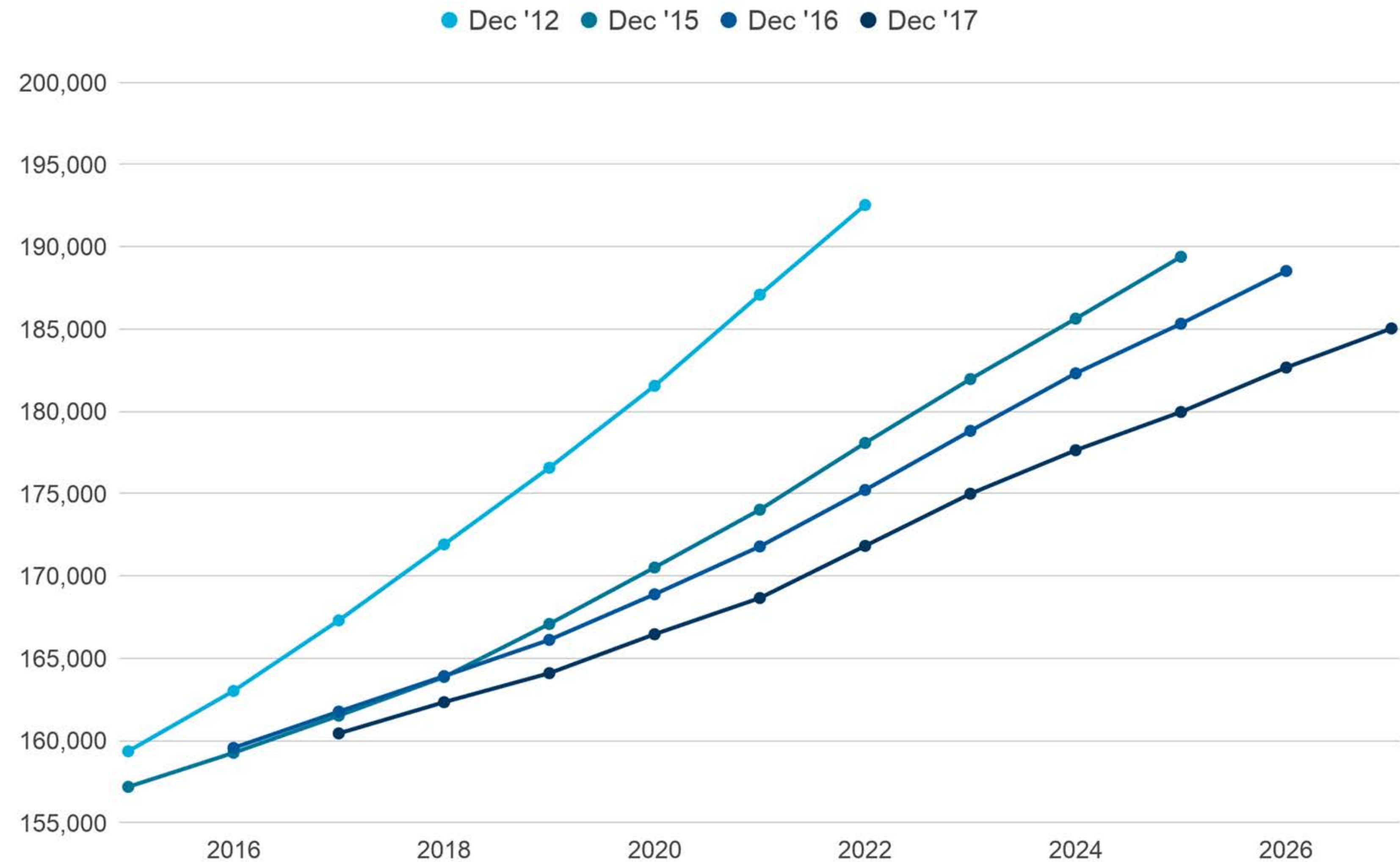


How Growth is Forecasted

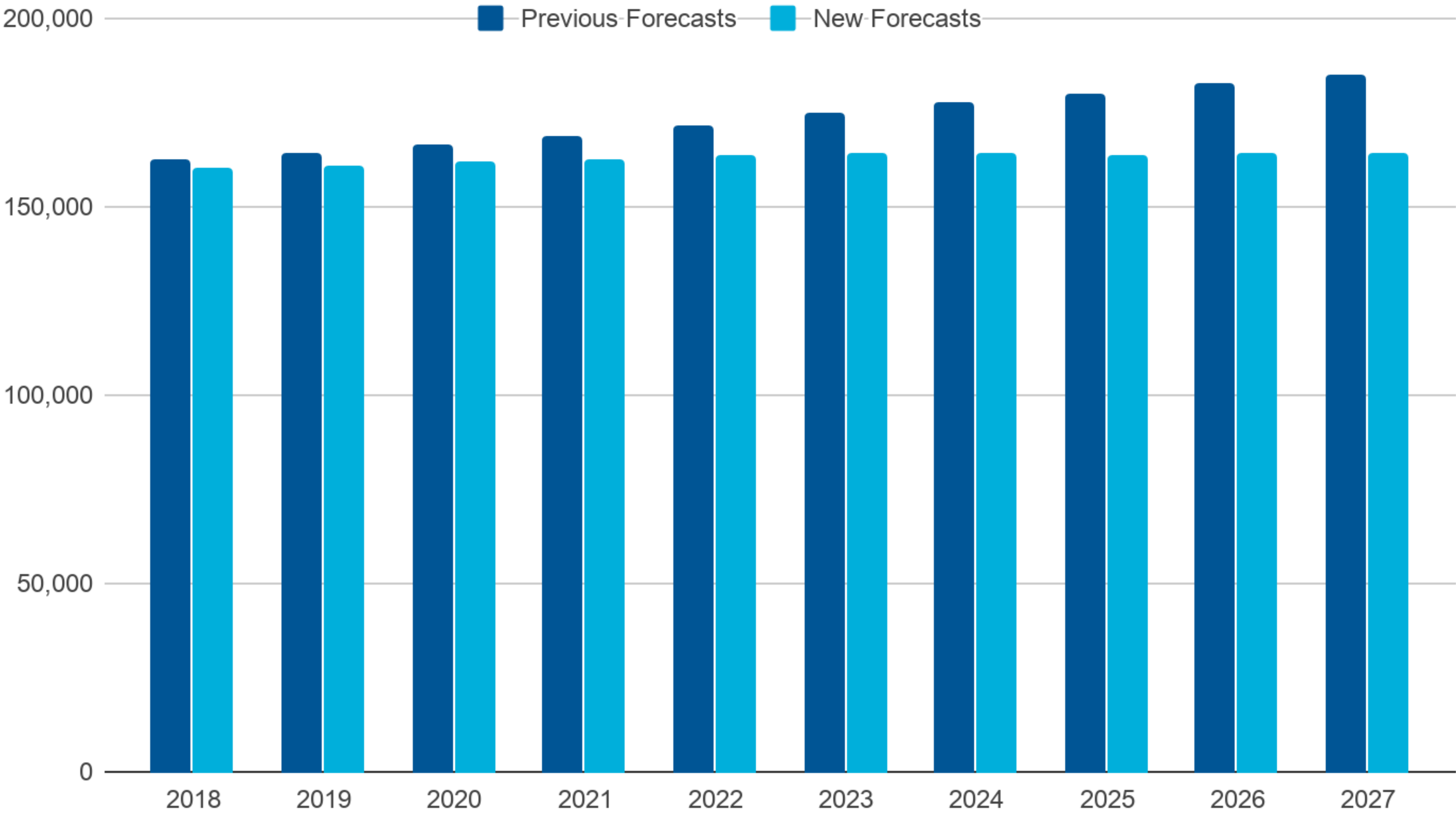


Data is adjusted annually to reflect changes in enrollments, birth rates, school-age residents and parental choice.

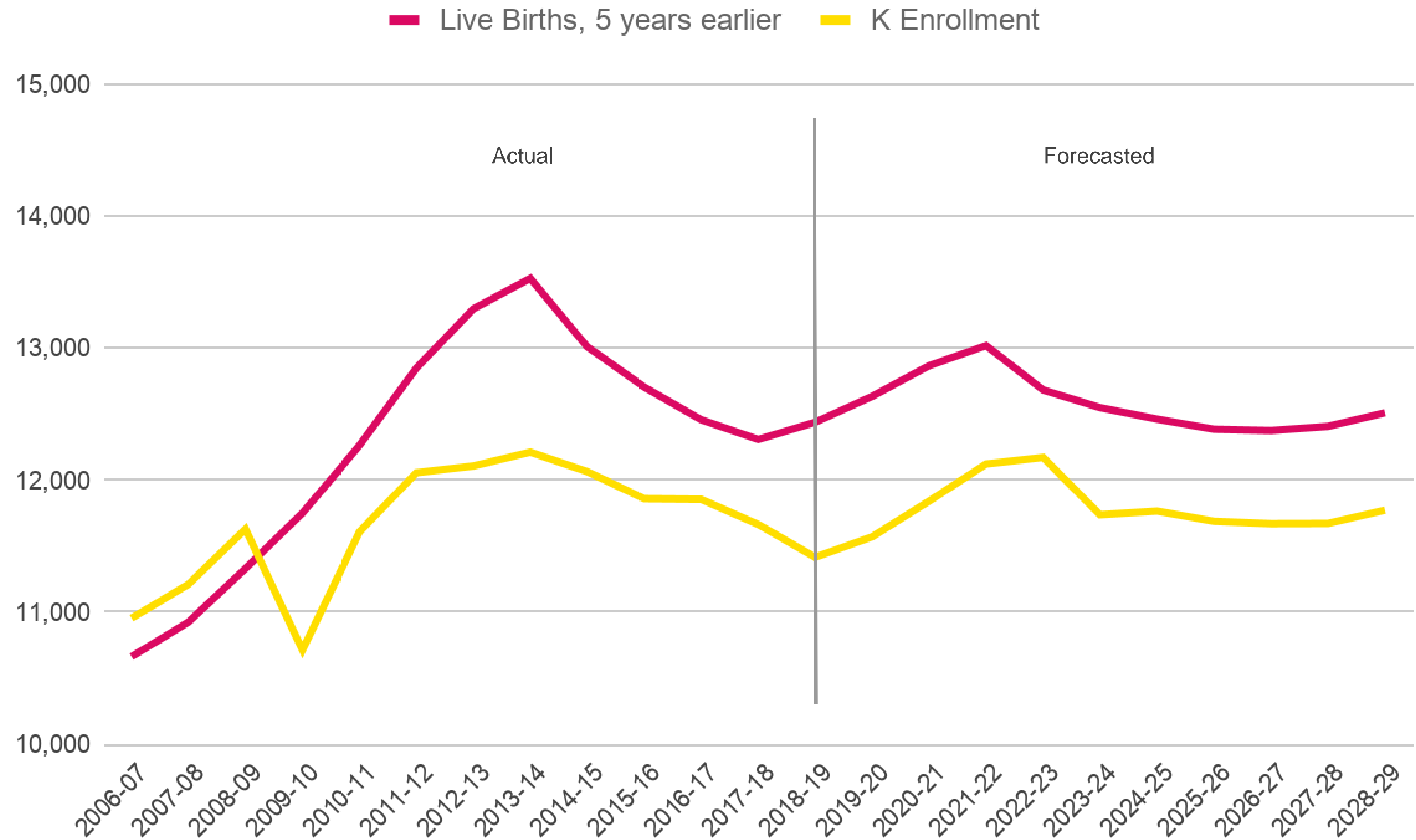
The team's forecasts have trended downward over time.



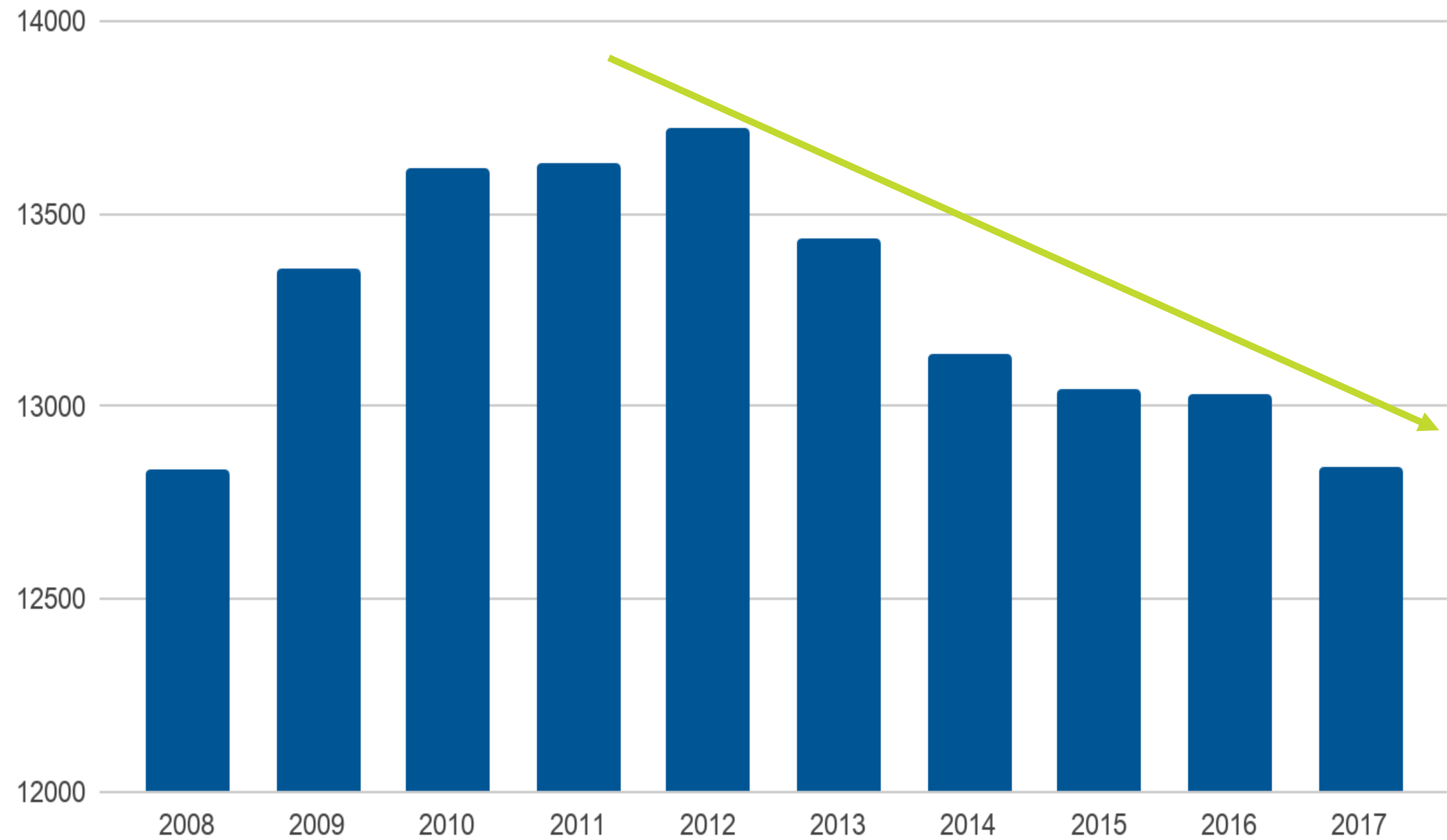
New Forecasts



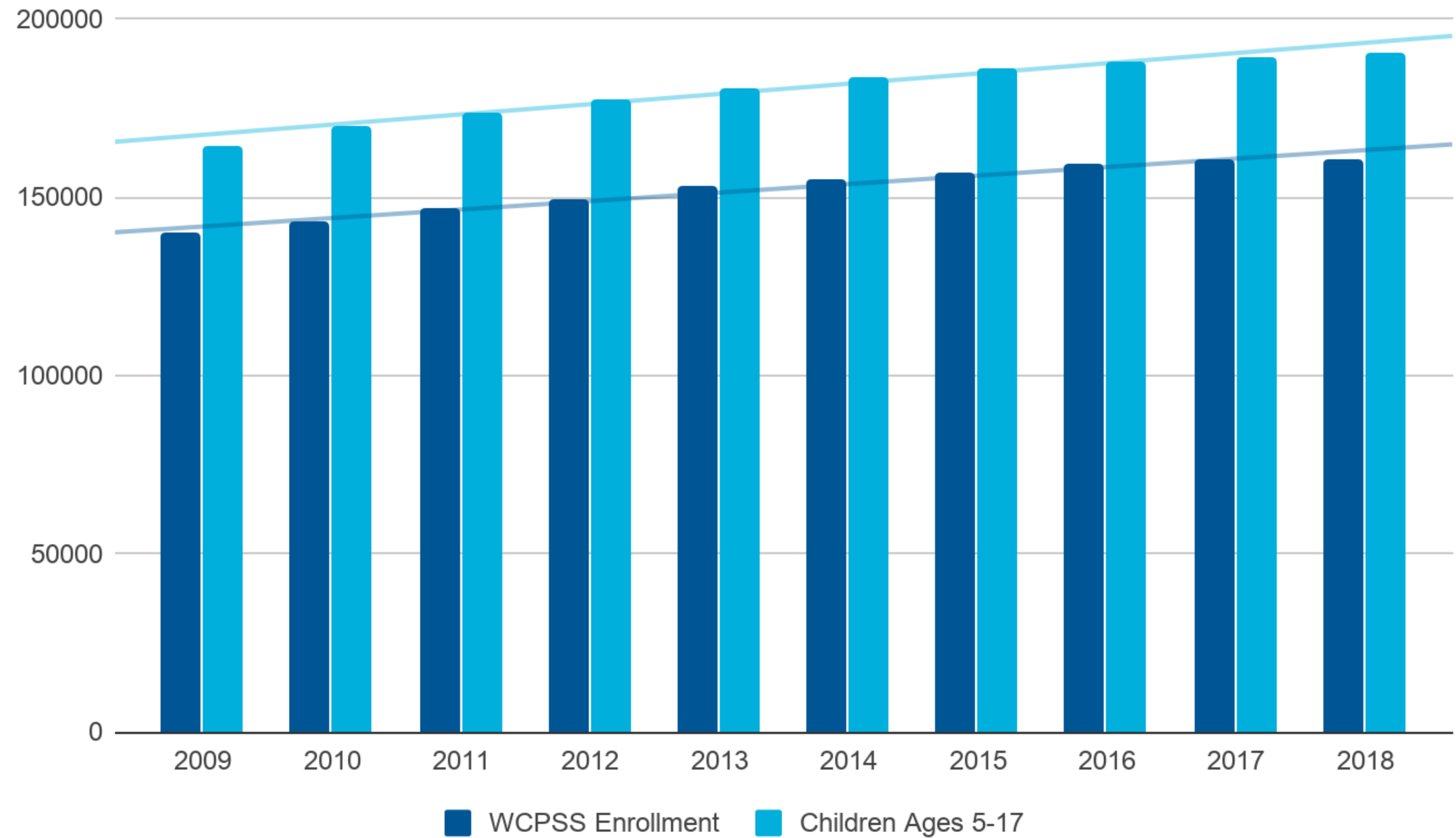
WCPSS Enrollment Compared to Live Births, Five Years Prior



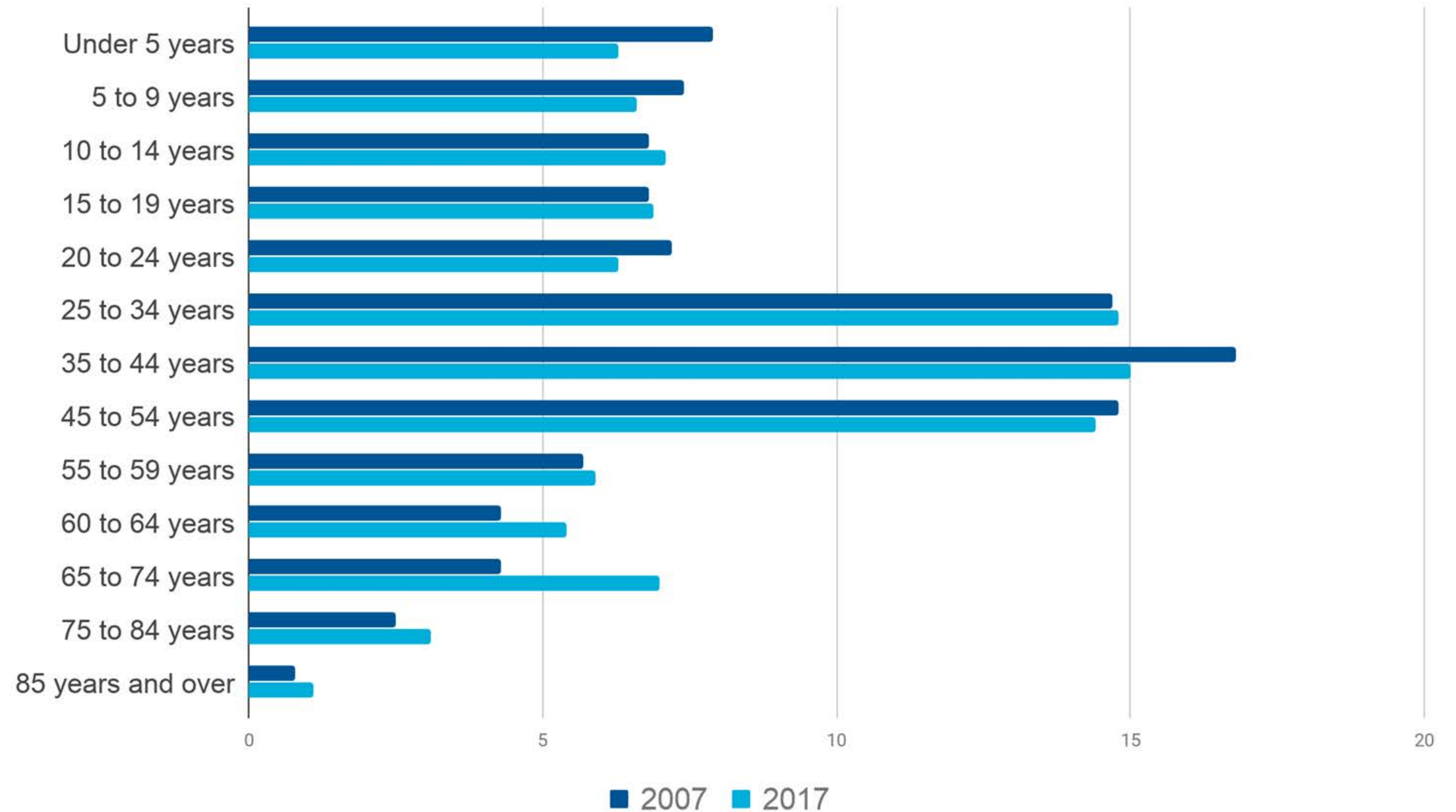
Decrease in Children Age 5 in Wake County, over time



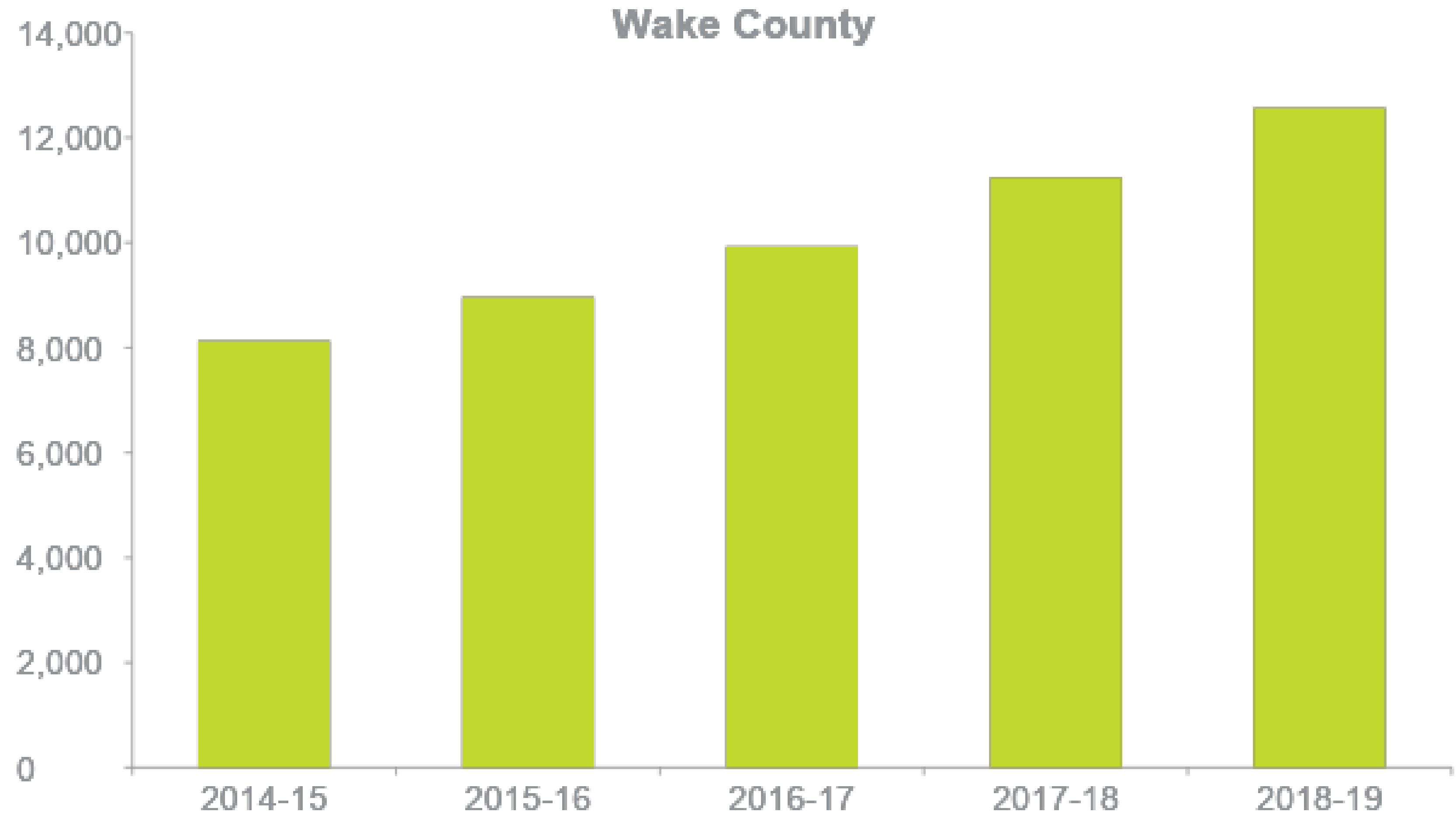
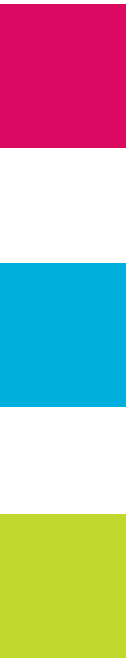
WCPSS Enrollment compared to all school- aged children



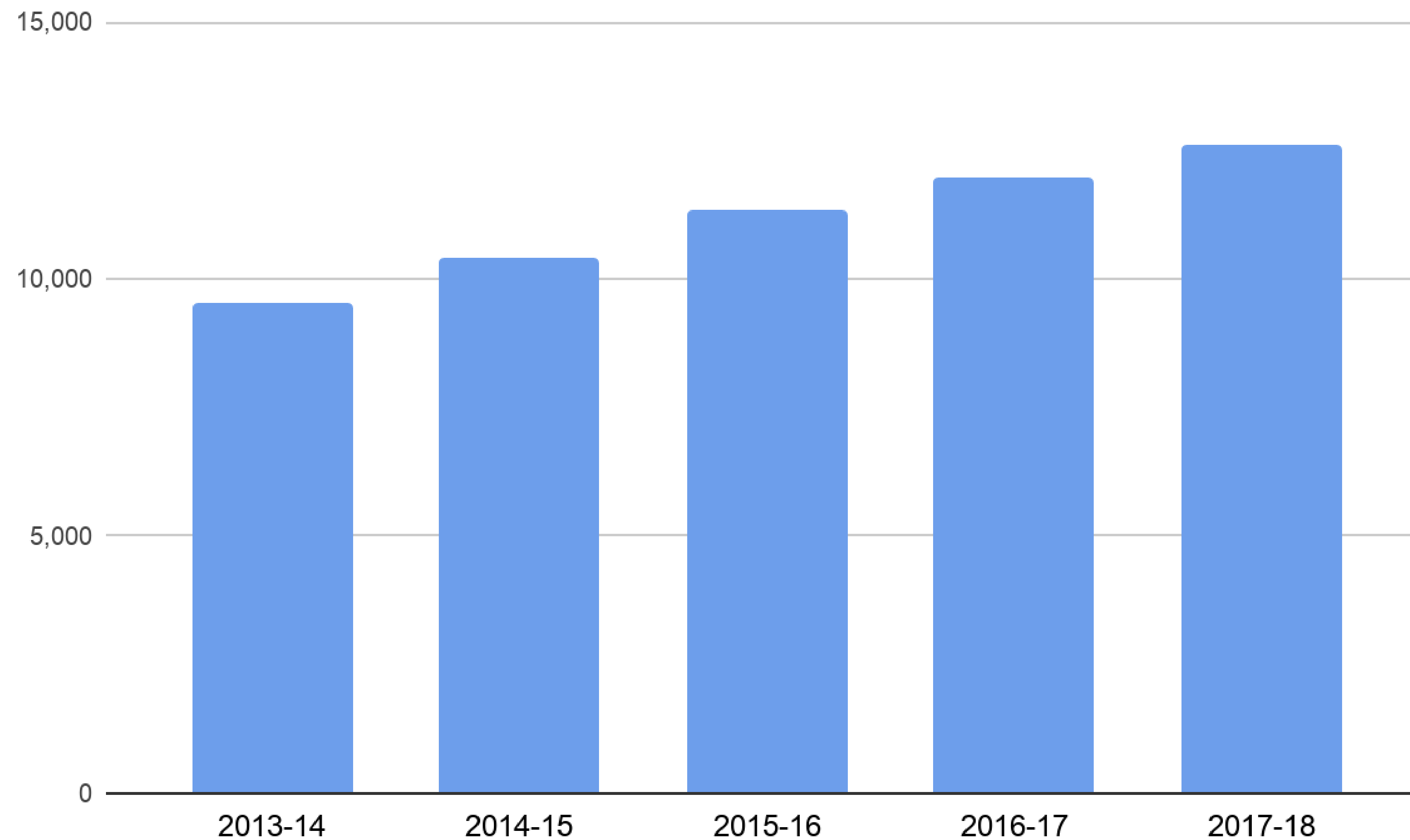
Aging of Wake County



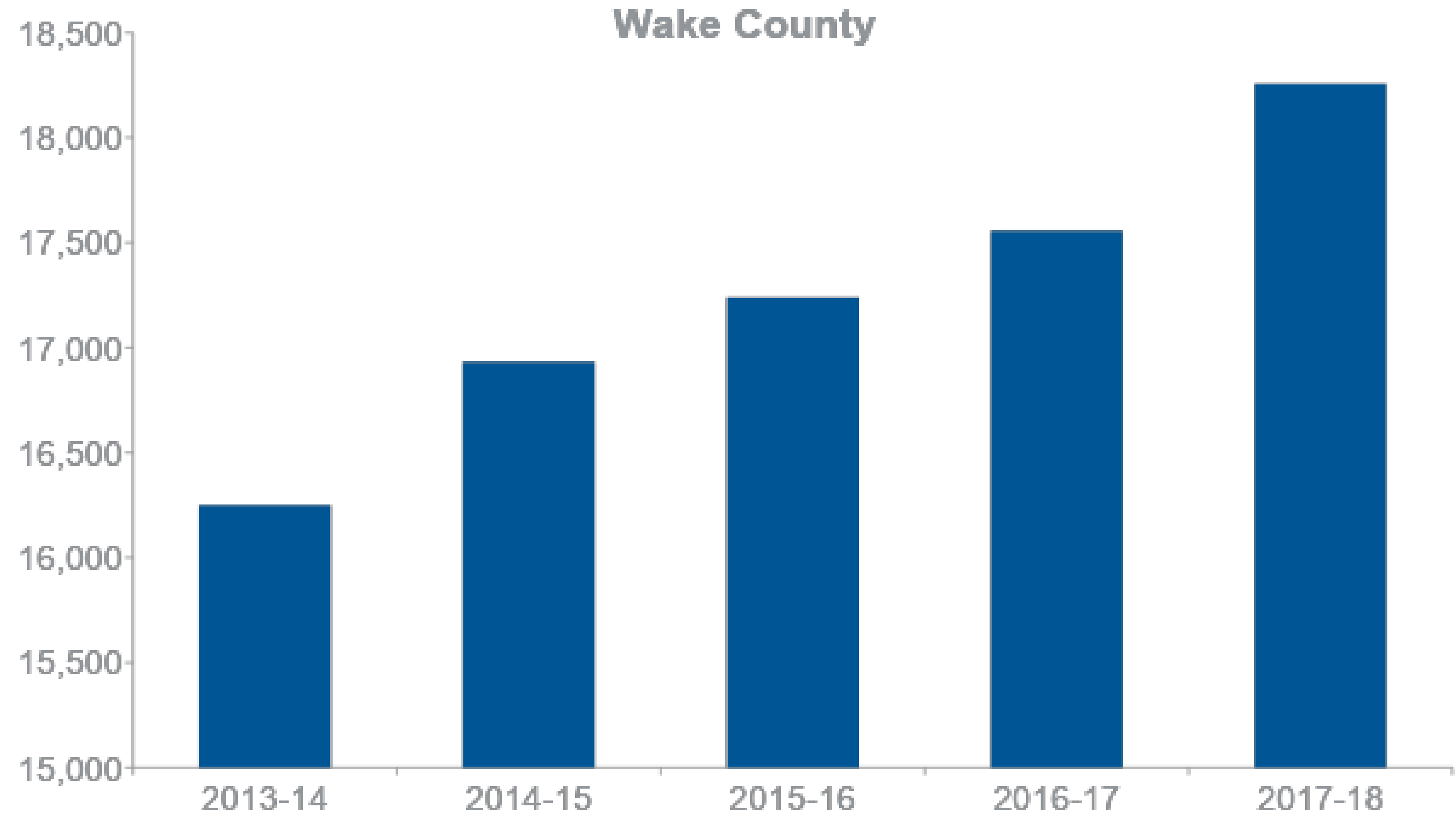
Charter School Students



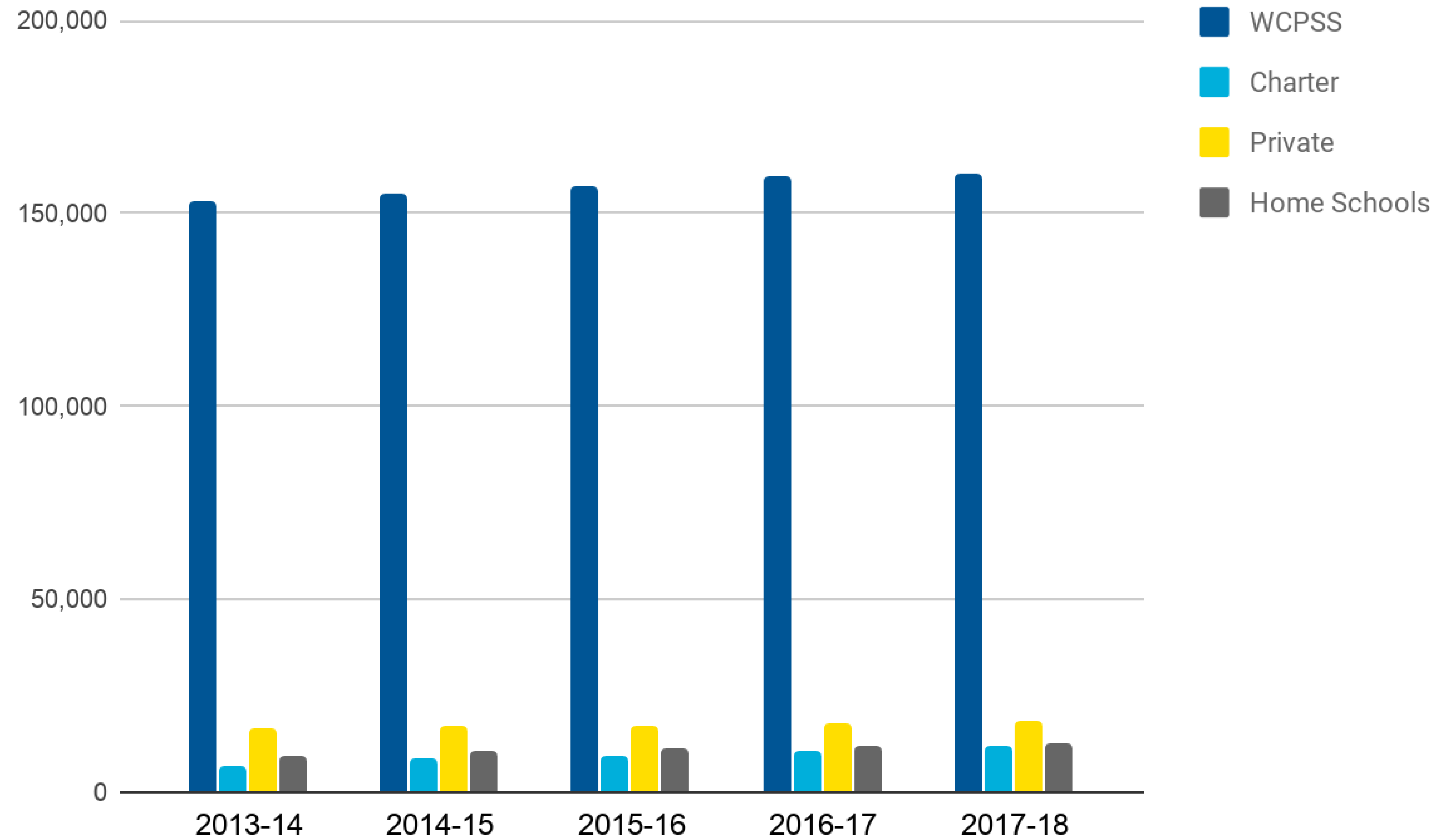
Home Schools



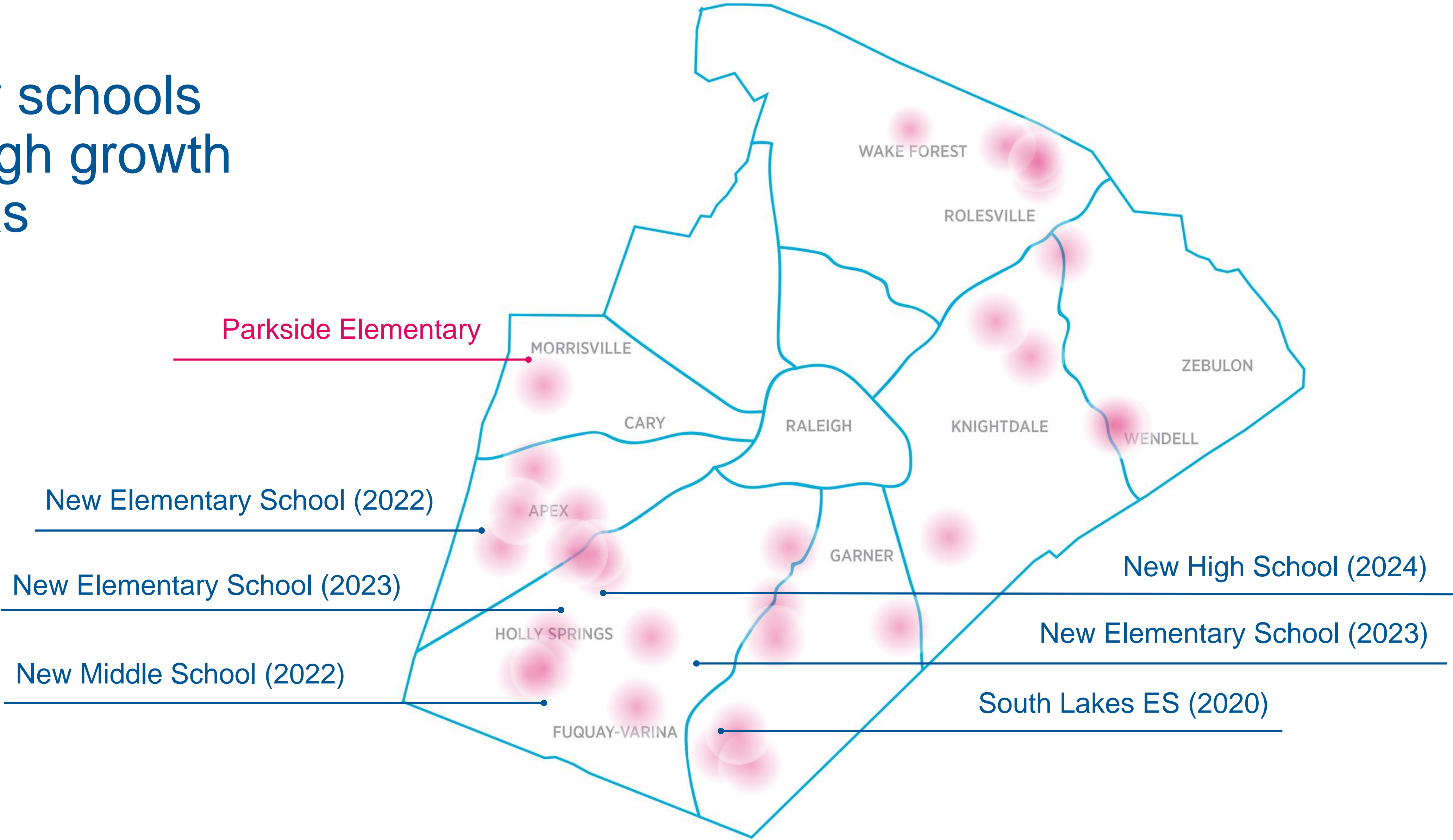
Private School Students



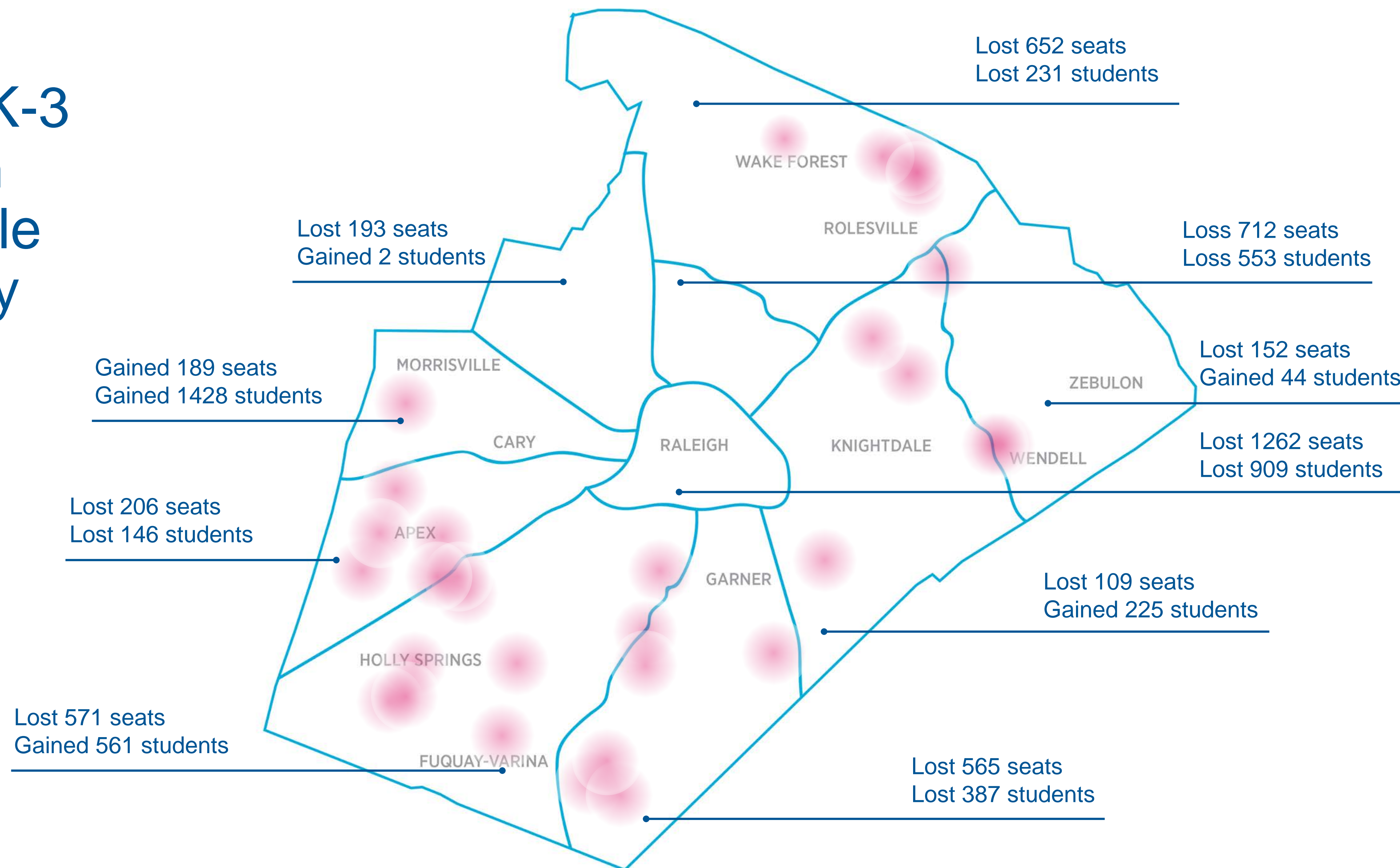
All School-Aged Children



New schools in high growth areas



Impact of K-3 Legislation on Available Elementary Seats



Needed School Renovations

- Two-thirds of the \$548 million bond approved by voters in November will be spent on modernizing and rebuilding schools, as well as upgrades to AC, heating, infrastructure and technology.
- These needs are not tied to enrollment growth.

Opportunity

- The slowing growth could afford us the opportunity to reduce crowding at some overburdened schools and catch up on deferred maintenance.

No Impact on Current Students

- Funding levels will continue to support our current students and will not impact the quality of education provided

Closure

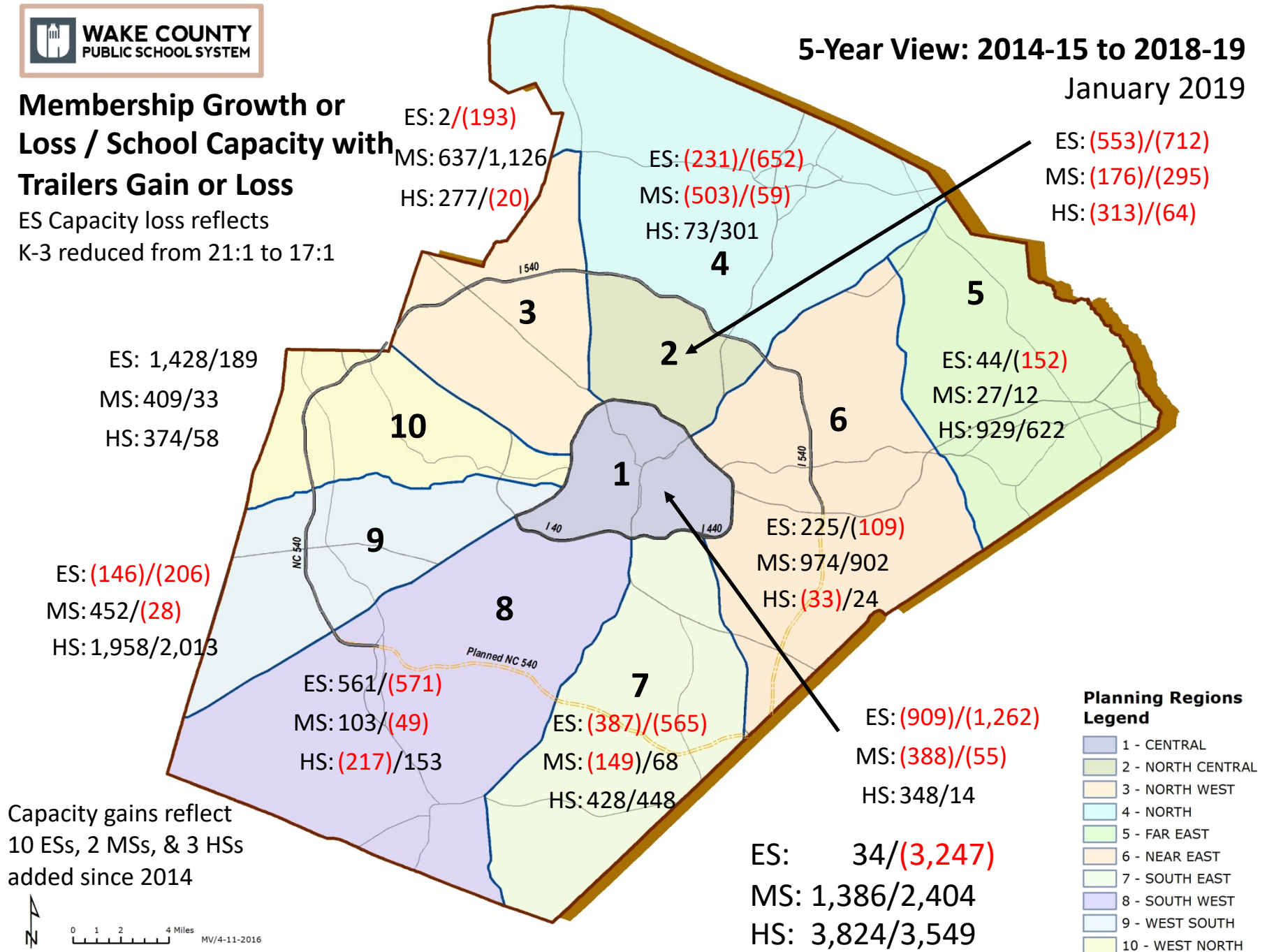
- Summary memo
- Detailed report of new forecast
- Membership and capacity by region
- Questions



Membership Growth or Loss / School Capacity with Trailers Gain or Loss

ES Capacity loss reflects
K-3 reduced from 21:1 to 17:1

5-Year View: 2014-15 to 2018-19
January 2019



Planning Regions Legend

- 1 - CENTRAL
- 2 - NORTH CENTRAL
- 3 - NORTH WEST
- 4 - NORTH
- 5 - FAR EAST
- 6 - NEAR EAST
- 7 - SOUTH EAST
- 8 - SOUTH WEST
- 9 - WEST SOUTH
- 10 - WEST NORTH



0 1 2 4 Miles

MV/4-11-2016