



Wake County Board of Commissioners

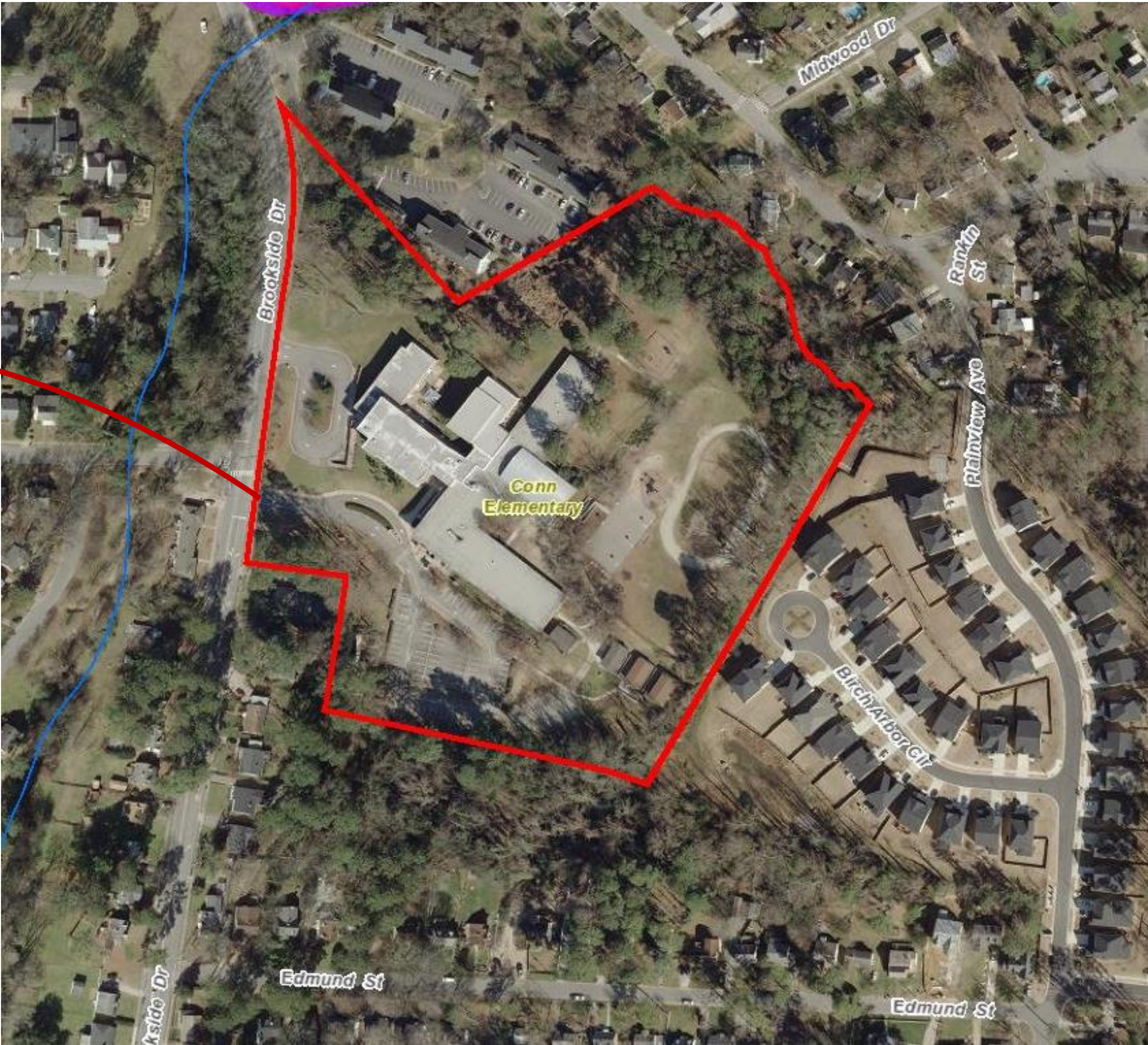
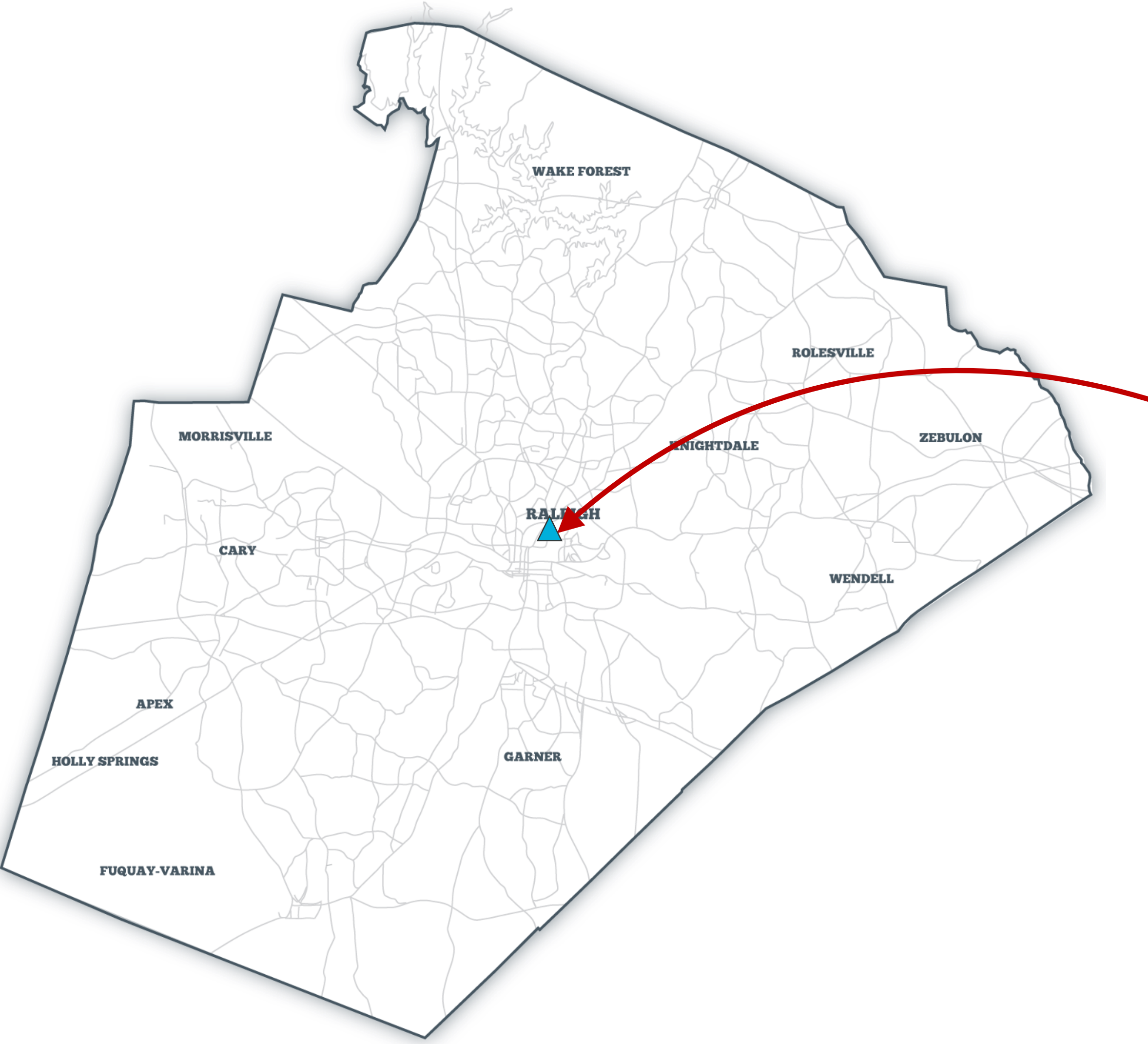
LAND ACQUISITION: Request for Approval and Funding of The Wake County Board of Education Acquisition of a 2.92 Acre Parcel Adjacent to Conn Elementary

Betty L. Parker, Senior Director

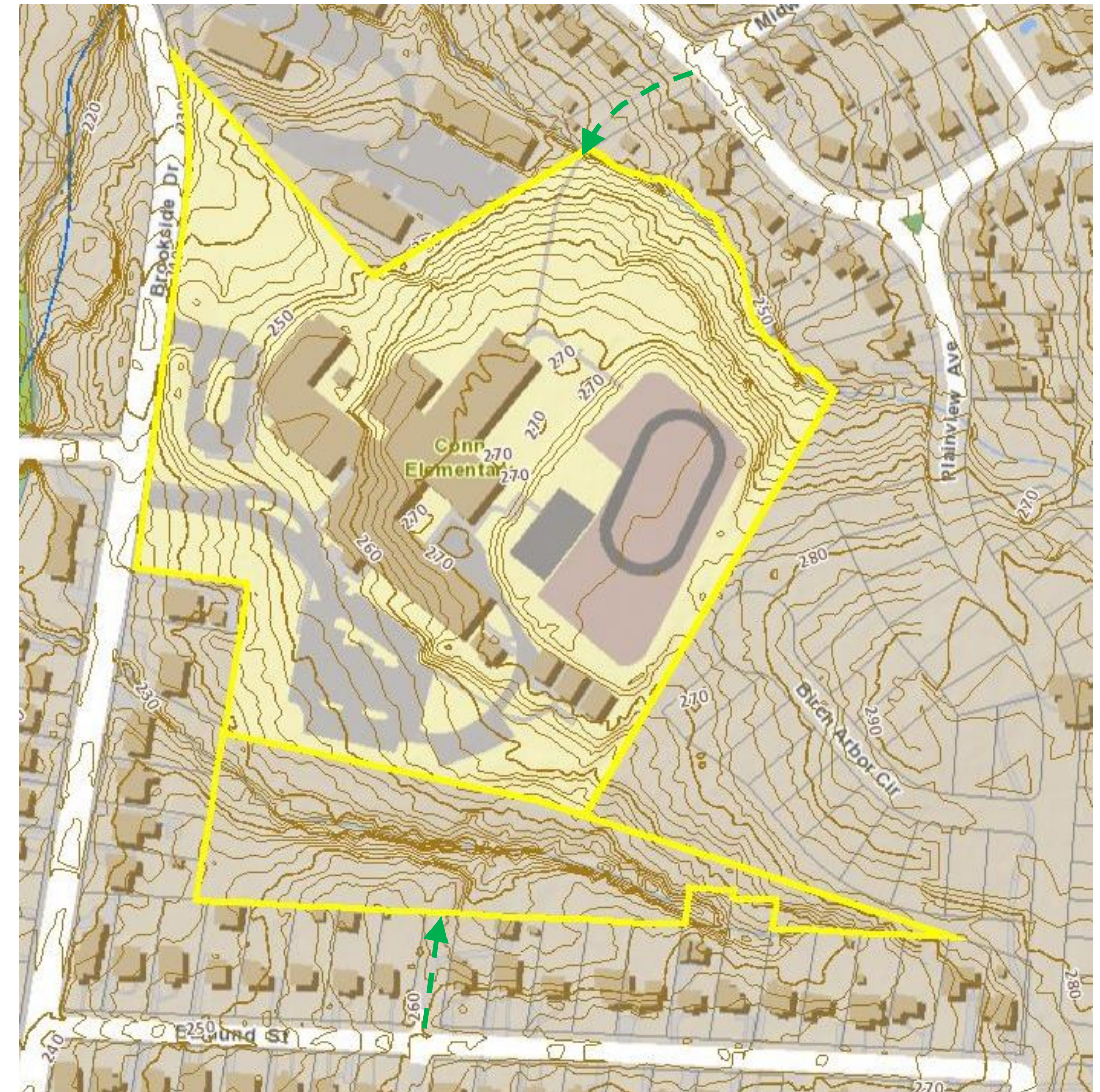
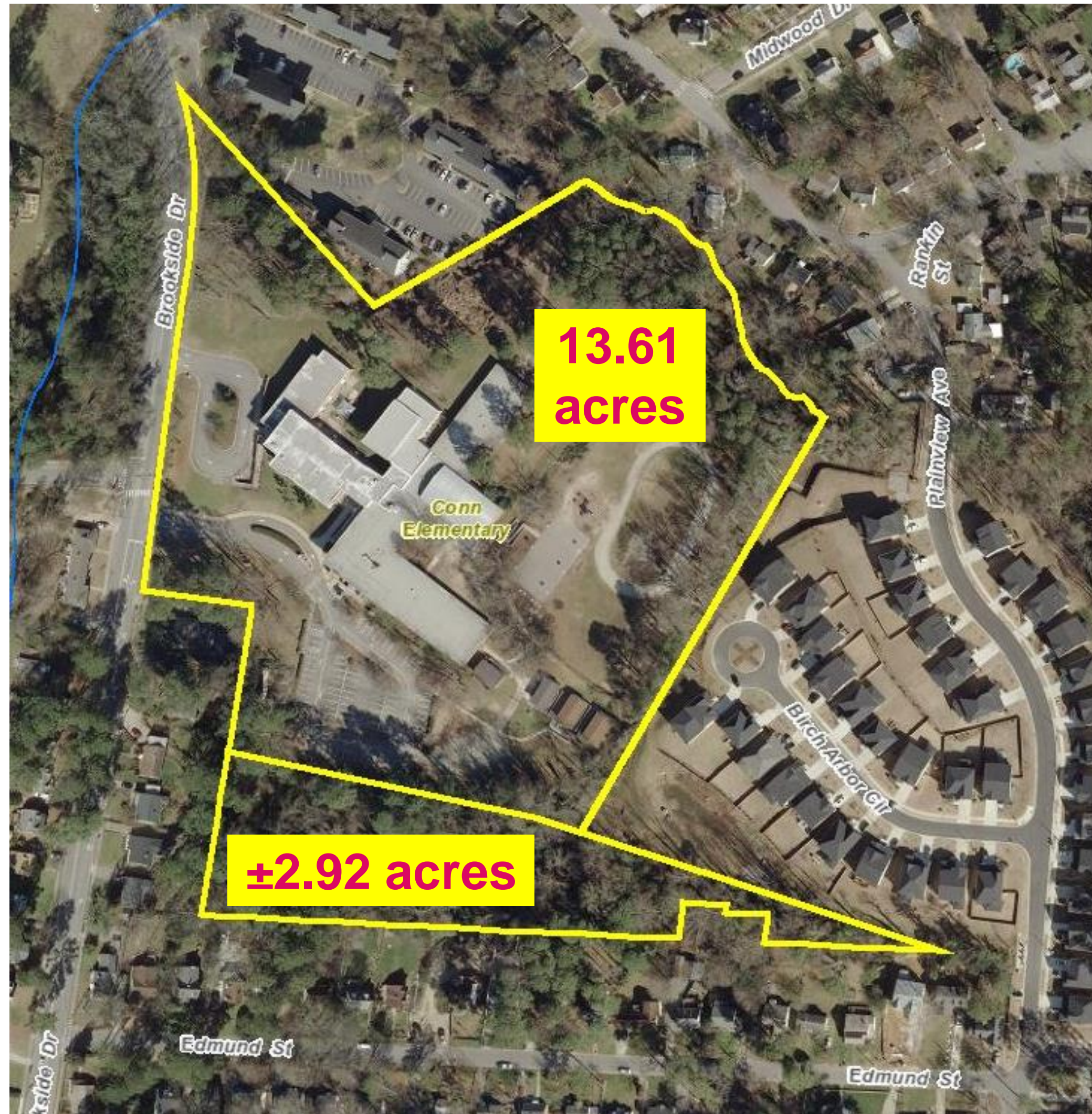
WCPSS Real Estate Services

April 16, 2018

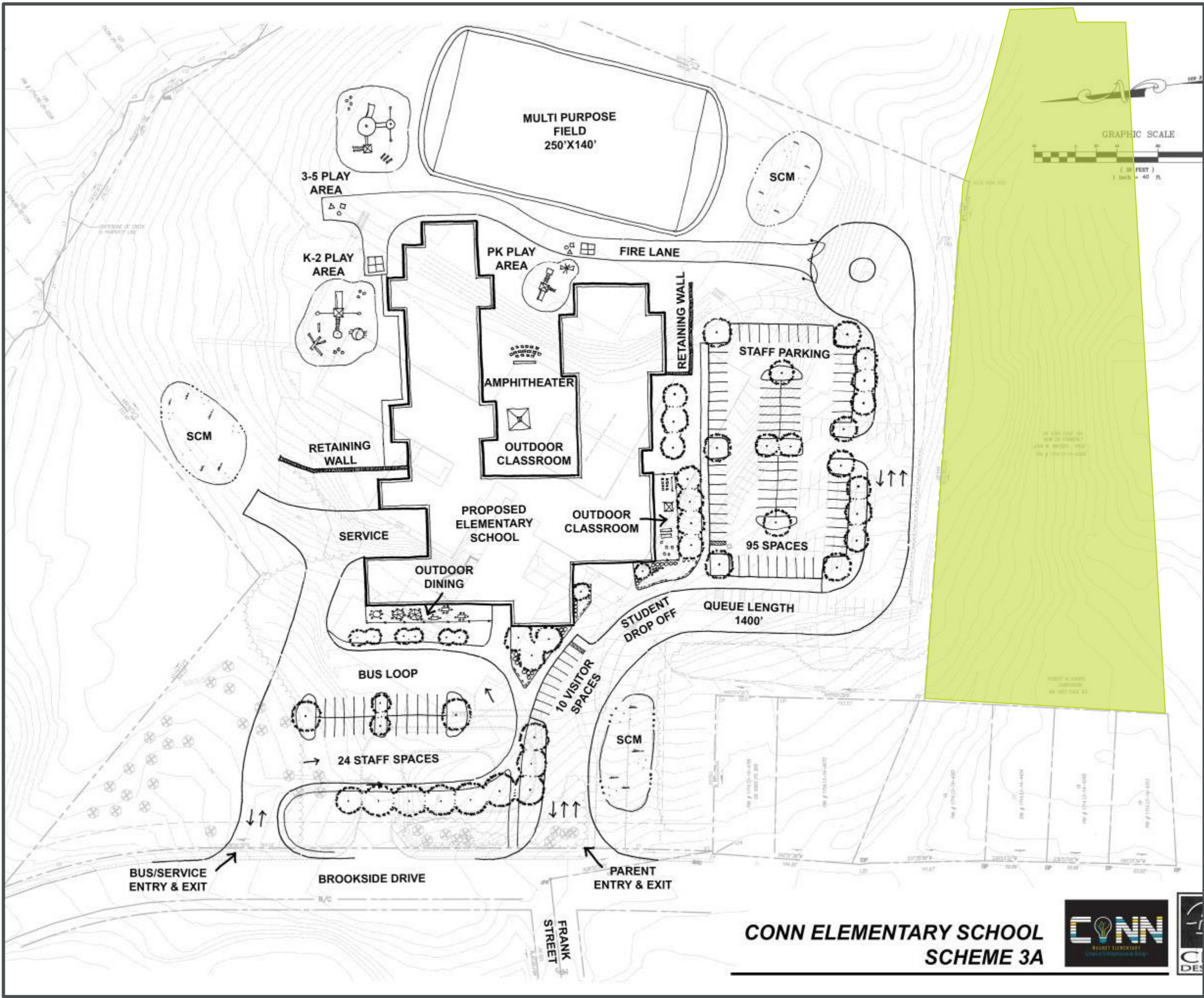
Conn Elementary School Location



Subject Parcel View – Proximity to Conn Elementary School



Subject Parcel View – Proximity to New Conn Elementary Design



Conn Elementary School – Neighborhood View



Contract Terms Information

- **Proposed Utilization:** Aids design flexibility for the Conn ES major renovation which is currently in design, offers potential for increased pedestrian/bicycle access and additional green space.
- **Seller:** Meadowlands of Raleigh, LLC (acquired the site in 2002)
- **Location:** 1207 Willow Street, Raleigh NC (PIN 1714-14-8337)
- **Asset Description:** 2.92 acres tract bisected by a buffered stream at the northern terminus of the undeveloped Willow Street
- **Negotiated Purchase Price:** \$60,000, (appraised value)
- **Due Diligence Period:** 120 days from contract execution, with Closing slated 30 days after due diligence (est. by 6/25/2018)

End of Presentation

Conclusion of First Reading Presentation

Questions?