

Wake County Boundary Line

Wake/Chatham/Harnett



@wakegov



wakegov.com

What is the Problem?

- It is common across NC for county boundary lines to be uncertain
- Encounter discrepancies in the location of shared county boundary lines
- Today's technology can locate boundary lines much more precisely and uncover discrepancies
- Urbanizing counties tend to discover more issues as development occurs across jurisdictional lines

Wake County

Formed in 1771 from Johnston, Cumberland & Orange Counties

“Beginning at Edgecomb Line on Mocossin Swamp, a Mile above James Lea’s Plantation, running a direct Line to Neuse River, at the upper End of John Beddingfield’s Plantation; then to David Mimm’s Mill Creek, between Mimm’s Mill and Tanner’s old Mill;...”



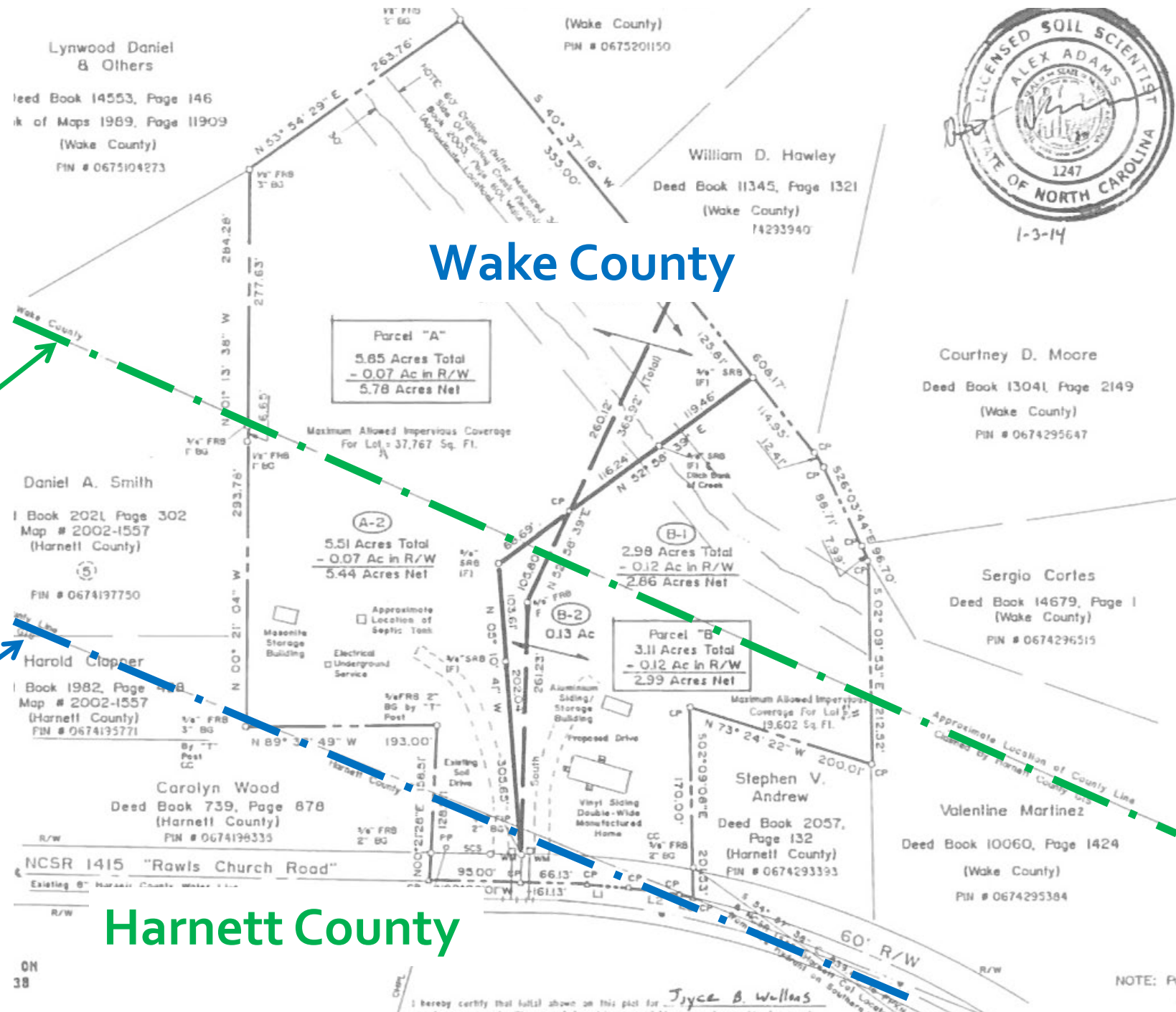
Why Resolve the Issue?

- Boundary line uncertainties create jurisdictional issues
 - ✓ Which county is the property listed for taxes
 - ✓ Where will they apply for building permits and other development services
 - ✓ Who will respond during a 911 emergency
 - ✓ Which elected officials will represent them and where will they vote
 - ✓ Where will they send their school children

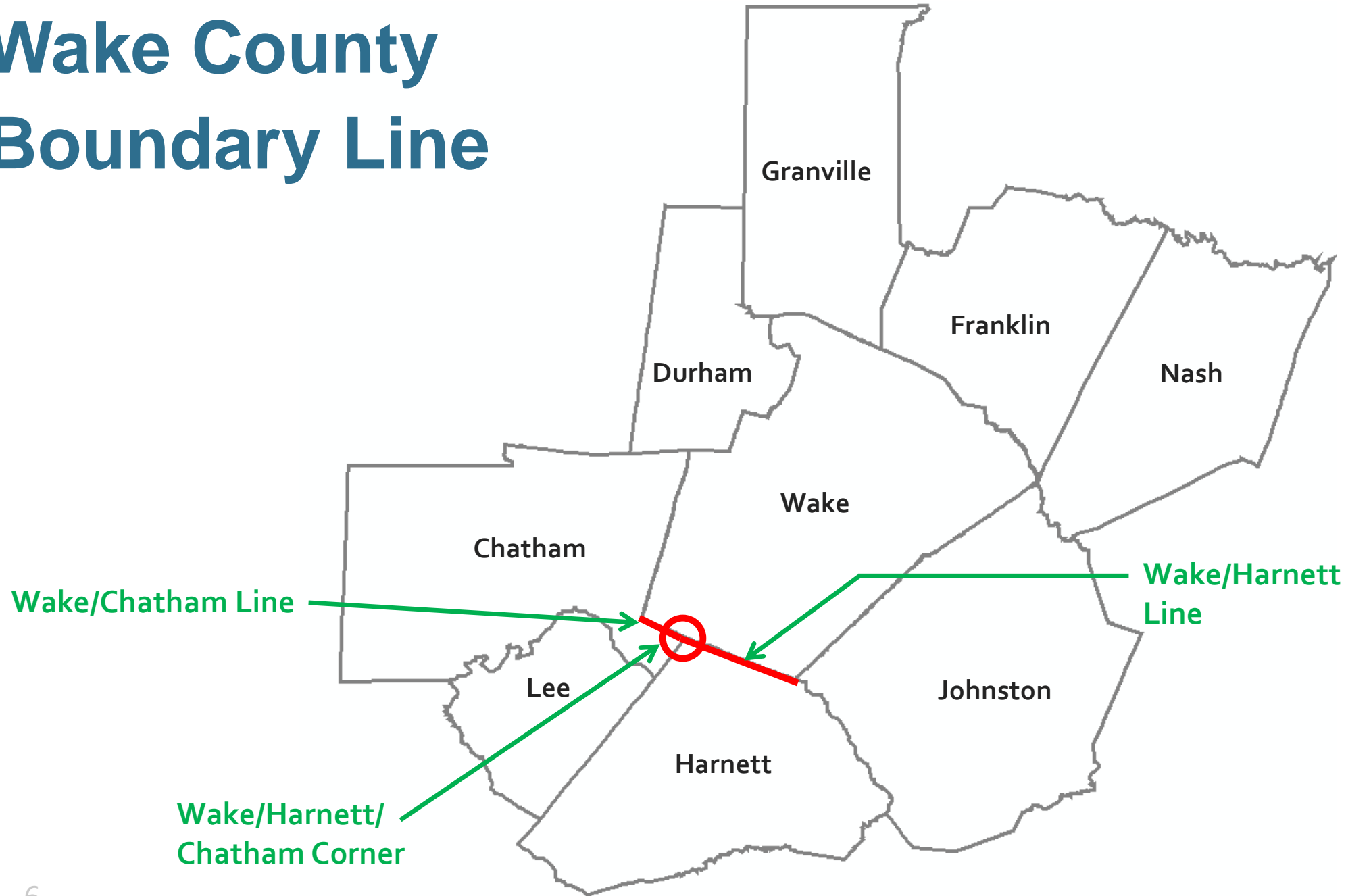
Example Issue

Harnett County Version

Wake County Version



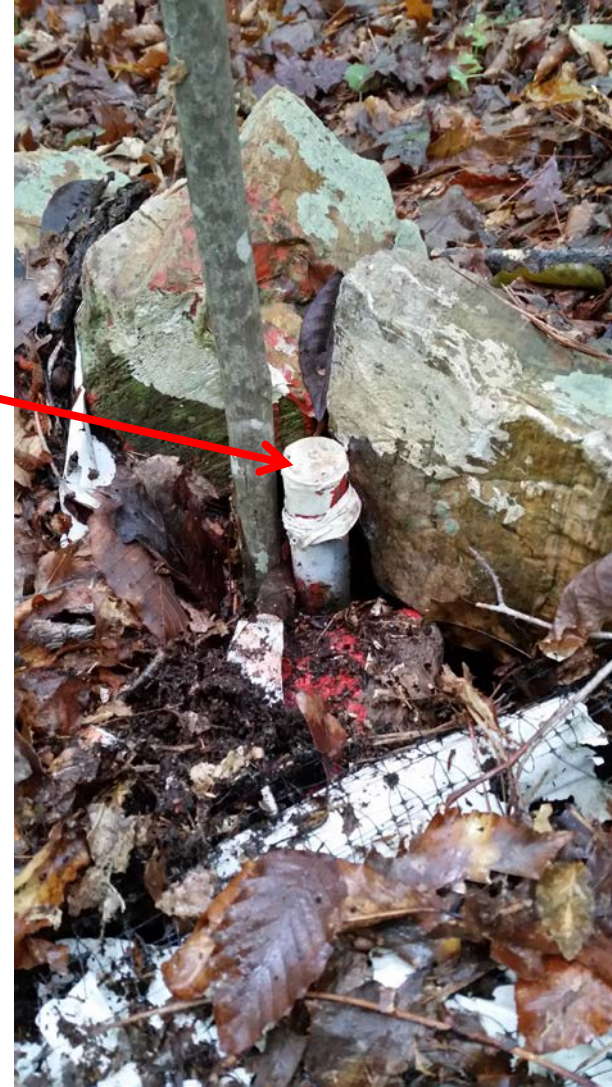
Wake County Boundary Line



Wake / Harnett / Chatham Corner



**Existing Iron Pipe
in Rock Pile**



**Original Corner Recently
Discovered by NCGS
(500' from current corner)**

What have we done so far?

- Staff has been working in partnership with Harnett and Chatham County
- NCGS has prepared a preliminary survey of the correct boundary line for Wake, Harnett and Chatham counties
- Contacted impacted property owners
- Hosted two community meetings to address property owner concerns

NC General Statutes

NCGS 153A-17 Existing Boundaries

- Established boundaries may only be changed in accordance with law

NCGS 153A-18 Uncertain or Disputed Boundary

- Uncertain boundaries may be resolved between two or more counties through a survey or other mapping
- The established line must be mutually adopted by the Board of Commissioners of each county

How do we correct this?

Step 1:

Correct the Common Corner for Wake/Chatham/Harnett and the Wake/Chatham Boundary Line

- The common corner and Wake/Chatham line was established by mutual agreement in 1961
- Must be corrected by state legislation (NCGS 153A-17 - Existing Boundaries)
- The joint resolution establishes support by all three counties for legislation in the upcoming NC General Assembly short session

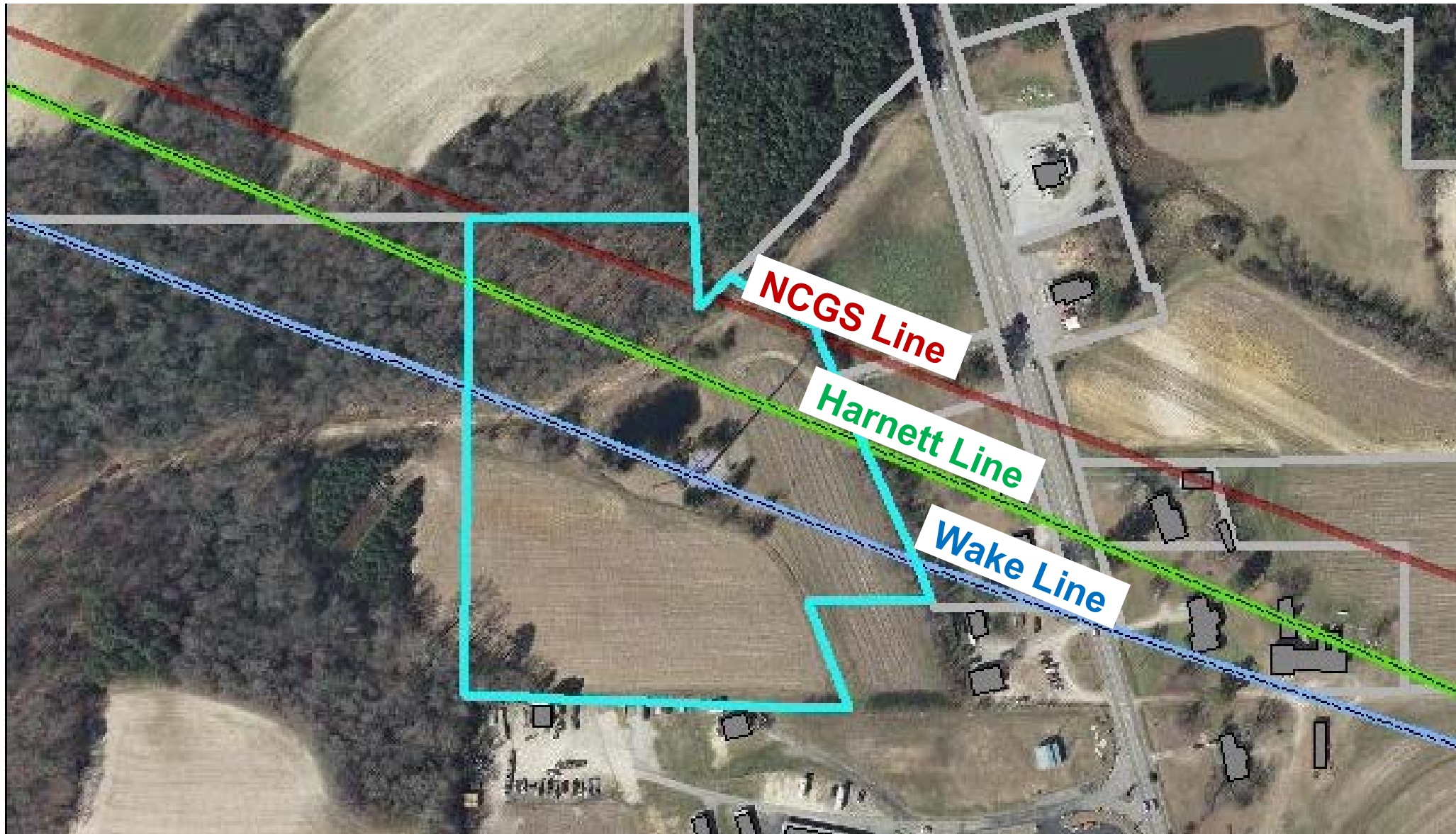
How do we correct this?

Step 2:

Correct the Uncertain Boundary Line Between Wake/Harnett

- The boundary line is uncertain and was not mutually established
- Wake and Harnett Counties will consider a joint resolution to establish the boundary line (NCGS 153A-18 - Uncertain or Disputed Boundaries) after state legislation corrects the common corner

Example of Property Impact (Wake / Harnett County Boundary Line)



Summary of Property Impacts

(Wake/Chatham)

Properties Affected	Parcel Count
Land Only	10
Dwellings	0
Total	10

Summary of Property Impacts

(Wake/Harnett)

Properties Affected	Parcel Count
Land Only	82
Dwellings	27
Total	109

Next Steps

- Board of Commissioners in each county to consider the joint resolution to support legislation (April – May)
- Prepare and enact legislation to relocate the Wake/Harnett/Chatham County corner and the Wake/Chatham County Line (Summer 2018)
- Wake/Harnett Board of Commissioners consider joint resolution to establish the county boundary line (Late Summer 2018)
- All updates effective January 1, 2019
- Apply Wake County zoning to properties transferring into Wake County (Jan. - Feb. 2019)

Questions?



@wakegov



wakegov.com

Detailed Summary of Impacts Wake / Harnett County Boundary Line

Properties Affected	Parcel Count
Land Only – Split Assessed	8
Land Only – Currently in Wake to be split with Harnett	54
Land Only – Currently in Harnett to be split with Wake	18
Land Only – Currently in Wake to be moved to Harnett	2
Dwelling - Currently in Wake to be split or moved entirely to Harnett	19
Dwelling – Currently in Harnett to be split or moved entirely to Wake	8