

Appendix 3

7-Year PROS CIP Recommendation

Open Space, Greenways,
Existing Park Improvements and New Parks



Funding Requests Considered

Board Approved Master Plans

- 2006 Wake County Consolidate Open Space Master Plan
- 2008 Wake County Comprehensive Parks and Recreation Master Plan
- 2017 Wake County Greenway System Plan
- 2017 Park Facility Master Plan Updates

Additional Opportunities

- Board of Commissioners directive to provide more public access to open space
- Acquisition of the former Crooked Creek Golf Course and conversion into a park
- Building of the Swift Creek Greenway
- Building the Triangle Bikeway
- Kellam-Wyatt Farm Preserve opportunity
- Leasing and developing parcels 2 and 3 of the RDU property

Total Cost

- \$456,000,000

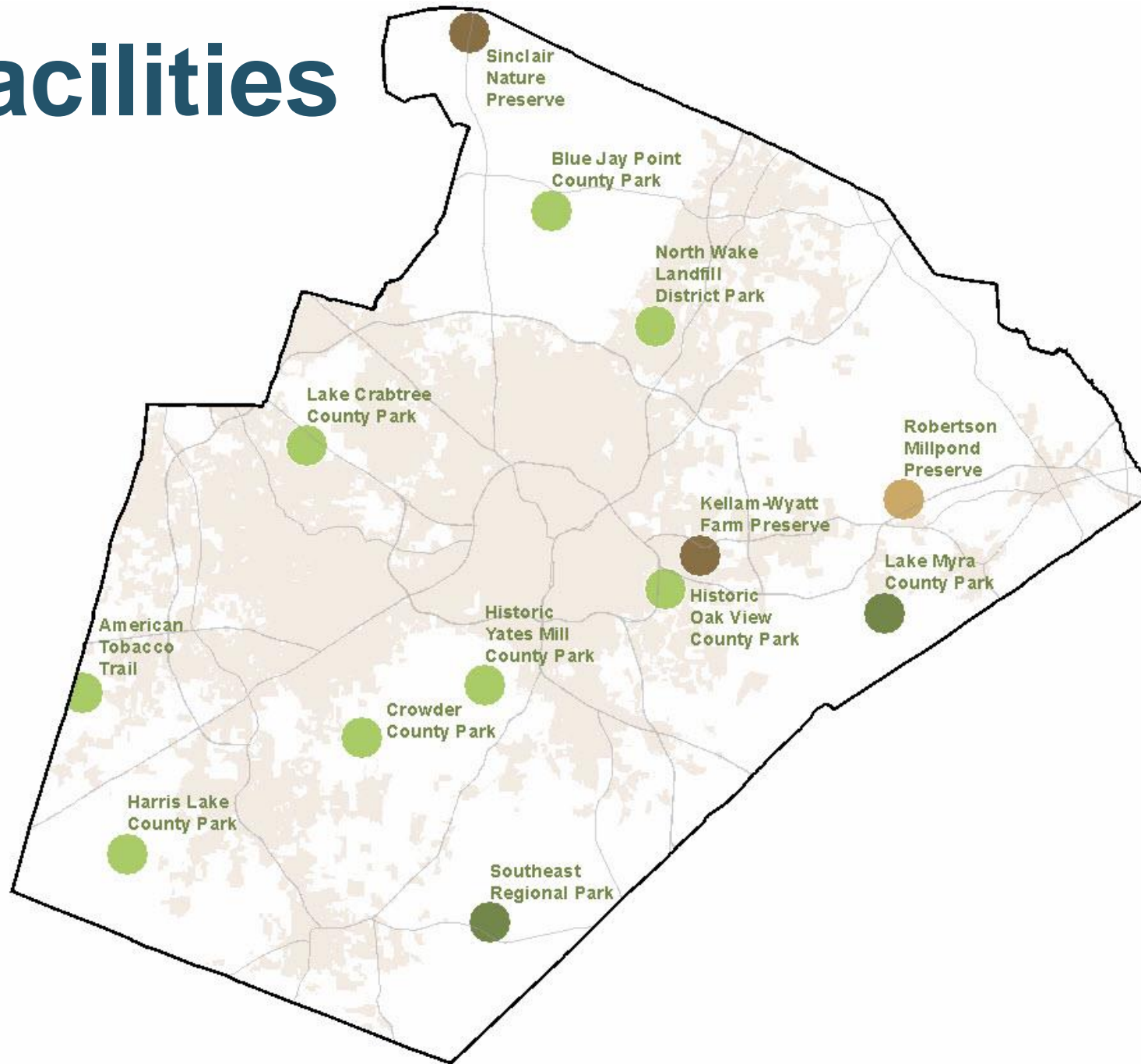
7-Year PROS CIP Proposal

\$120,000,000 over 7 years

- Acquire ~1,834 acres of open space
- Build ~ 15.3 miles of greenways
- Build and open Southeast Park
- Build and open Lake Myra Park
- Open Kellam-Wyatt Farm Preserve
- Expand Robertson Millpond Preserve
- Open Sinclair Nature Preserve
- Improvements at 8 existing County Park facilities

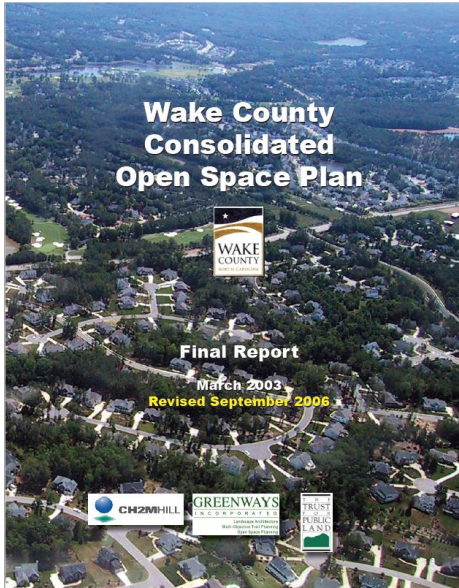
Unanimously approved by the Open Space and Parks Advisory Committee

PROS Facilities

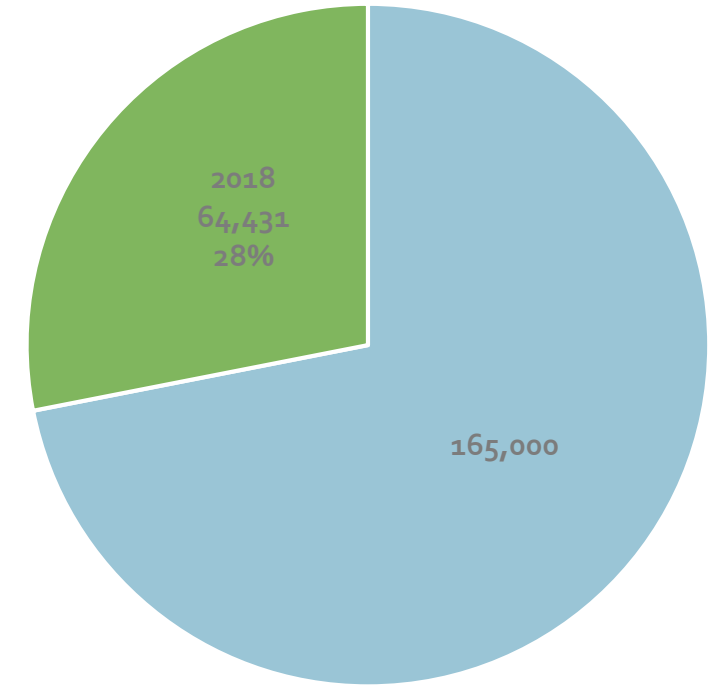


Open Space Acquisition

- Created – 2003; updated in 2006
- Included open space planning in each municipality
- Goal to protect 30% of County = 165,000 acres
- Protected to date 64,431 acres
- Acquired – Average of 400 acres per year.
- Estimated – \$7.2M / year to sustain 400 acre average
- Recommended - \$4.0-5.9M



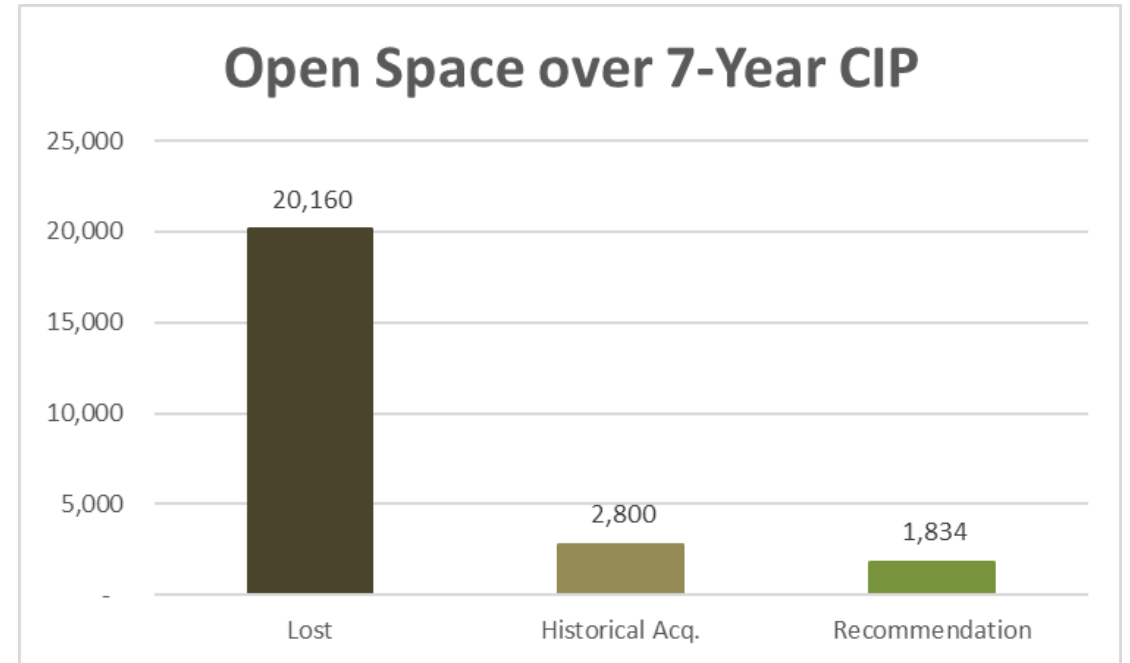
Targeted Open Space Acquisition



■ Target Open Space Acquisition ■ Achieved

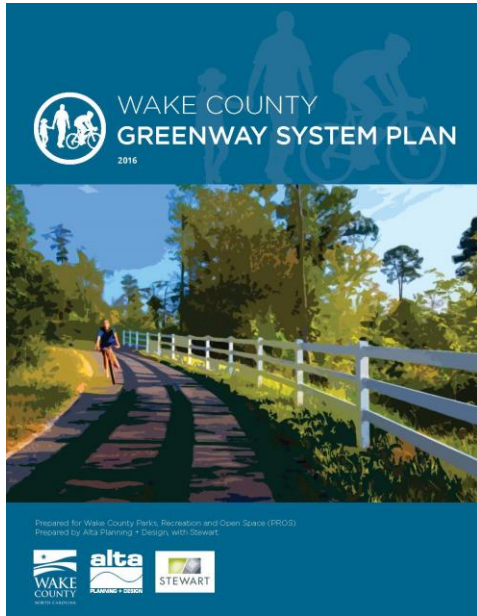
Open Space Acquisition

- Annually ~2,880 acres of open space and agricultural land are lost to development
- Historically the County has acquired ~400 acres a year
- Sustaining a ~400 acre a year preservation rate requires \$7.2 million annually
- Recommended - \$4.0-5.9 million annually (~229 – 337 acres / year)



**7 year net loss of ~18,400 acres of undeveloped land.
Equivalent to over 3 Umstead State Parks**

Greenways



BRIDGE THE GAPS: YEARS 1-5

- 47 miles of trail in 23 project segments
- Total Estimated Cost: \$103 million (based on the mid-range of total costs listed in individual cut-sheets (\$72M), plus a 12.5% design estimate (\$8.6M), and adjusted for annual 5% inflation through year 2021 (\$22M))
- Funding Strategy: County CIP funding of \$35 million, with a 3-1 leverage goal. Goal to be achieved through a combination of local municipal matching funds (percentages TBD), CAMPO/LAPP project funding, and potential funding through private investment.

CONNECT TO PARKS & LAKES: YEARS 5-9

- 56 miles of trail in 12 project segments
- Total Estimated Cost: \$122 million (based on 2016 planning-level per-mile cost estimate of \$1.2M/mile (\$67M), plus a 12.5% design estimate (\$8.1M), and adjusted for annual 5% inflation through year 2026 (\$47M))
- Funding Strategy: Submit projects for CAMPO/STI funding, supplement with local and county funding as available. Consider additional County CIP funding based on performance of initial investment above. Align "shovel-ready", high-impact projects with future U.S. DOT TIGER Grant funding (or similar), if available.

CONNECT THE COMMUNITIES: YEARS TBD

- 19 miles of trail in 6 project segments
- Funding Strategy: TBD based on and success of program to-date and plan update in year 10

COMPLETE THE SYSTEM: YEARS TBD

- 149 miles of trail in over 20 project segments
- Funding Strategy: TBD based on and success of program to-date and plan update in year 10

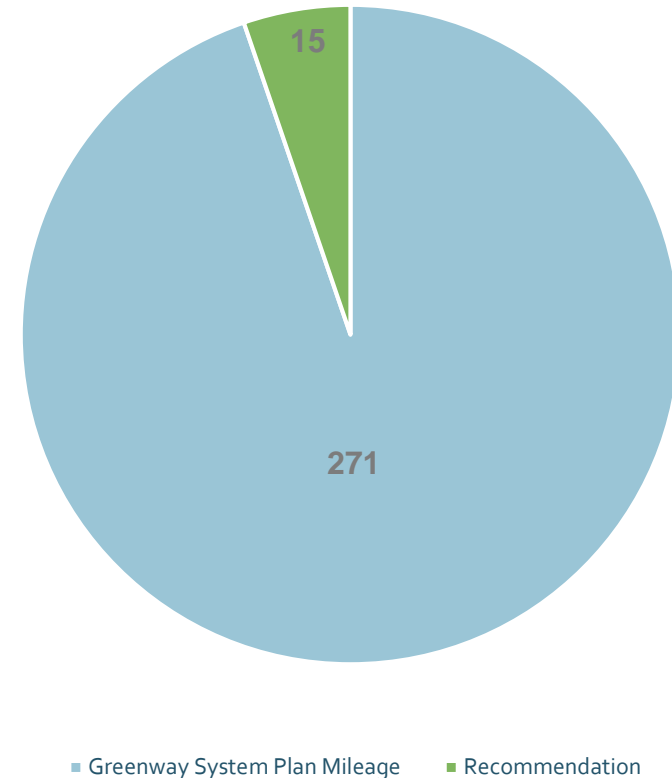
- Adopted 2017
- Categorized

• Bridge the Gaps	47 miles
• Parks & Lakes	56 miles
• Communities	19 miles
• System	<u>149 miles</u>
	271 miles

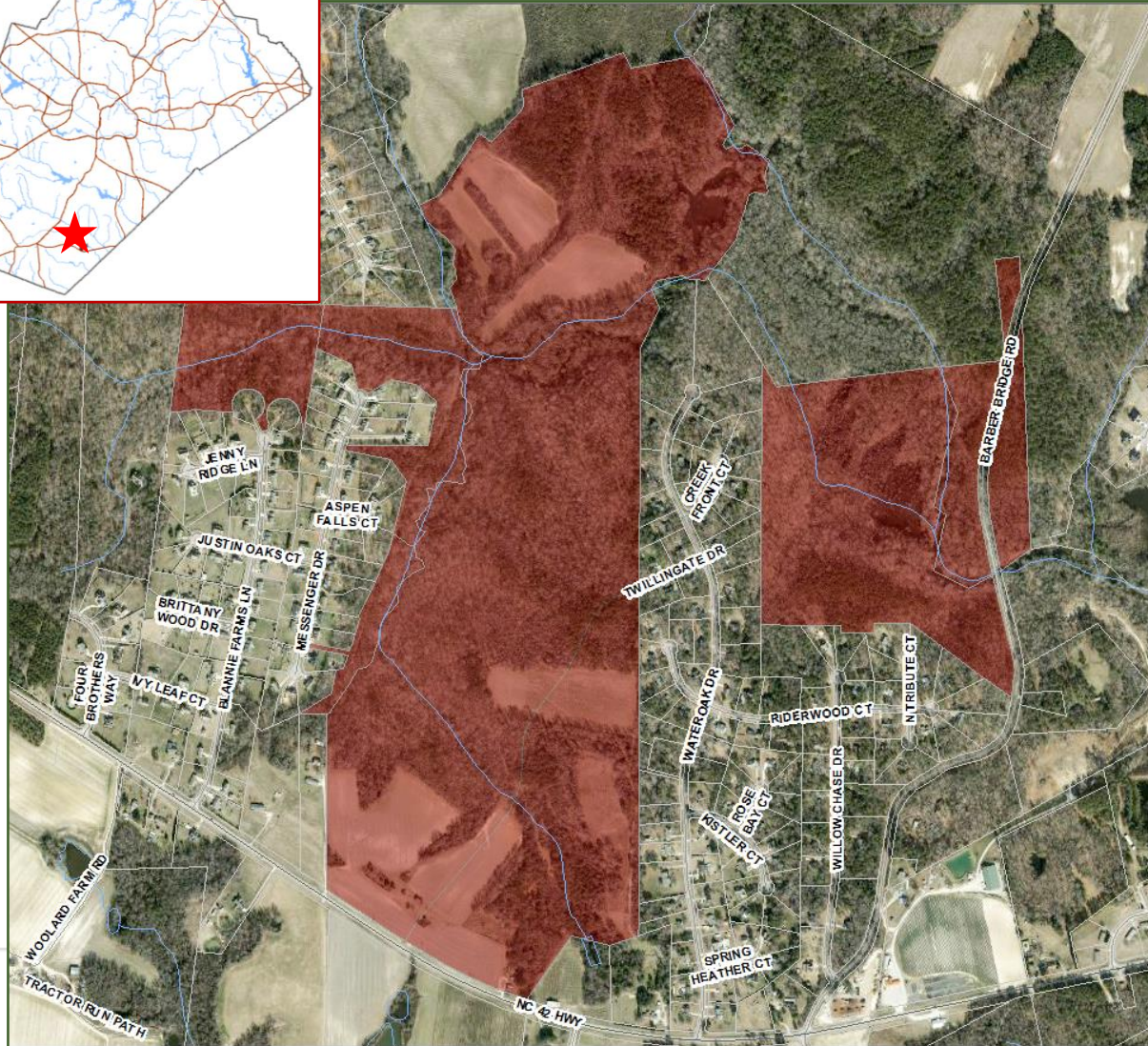
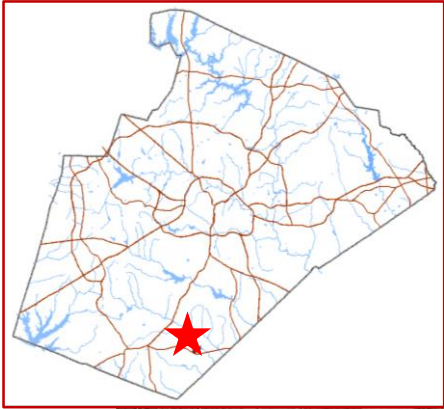
Greenways

- Estimated – \$2 million a mile
- Full greenway build out - \$542 million
- Recommended – \$ 4.0-5.7M per year
- \$30.8 million (15.4 miles)

Greenway System Plan



Southeast Wake Park



- Identified in 2003 and 2008 Master Plan
- Land acquisition began in 2004
- Currently 301 acres acquired
- Additional 394 acres possible
- At 695 acres would be the County's biggest park
- Master planning in progress
- OSAPAC top priority along with Crowder Park expansion

Lake Myra County Park



Figure 9.1

Susan Hatchell Landscape Architecture, PLLC
Lake Myra County Park Master Plan Update

- Property acquired in 2006 in partnership with the Triangle Land Conservancy and Trust for Public Land to be developed as a park
- Identified in 2008 Master Plan
- 244 acres
- Adjacent to Wendell Falls (4,000 homes at full build out)
- Lake Myra Master Plan completed

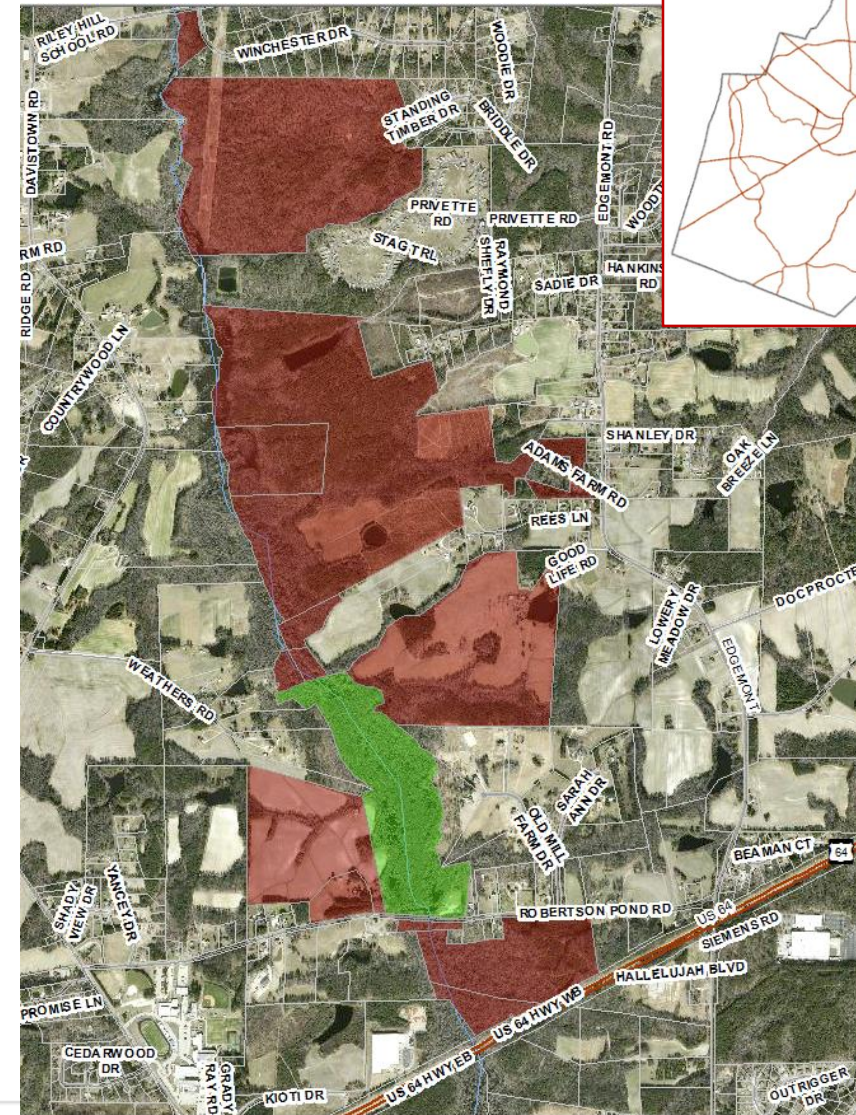
Kellam-Wyatt Farm Preserve

- Donation of 58 acres
- Partnership with both The City of Oaks Foundation and City of Raleigh
- Ideal for urban farming
- BOC Growth and Sustainability Goal Initiative 3.5 “Encourage farmland preservation”
- Short connection to Anderson Point Park and the Neuse River and Crabtree Creek Greenways



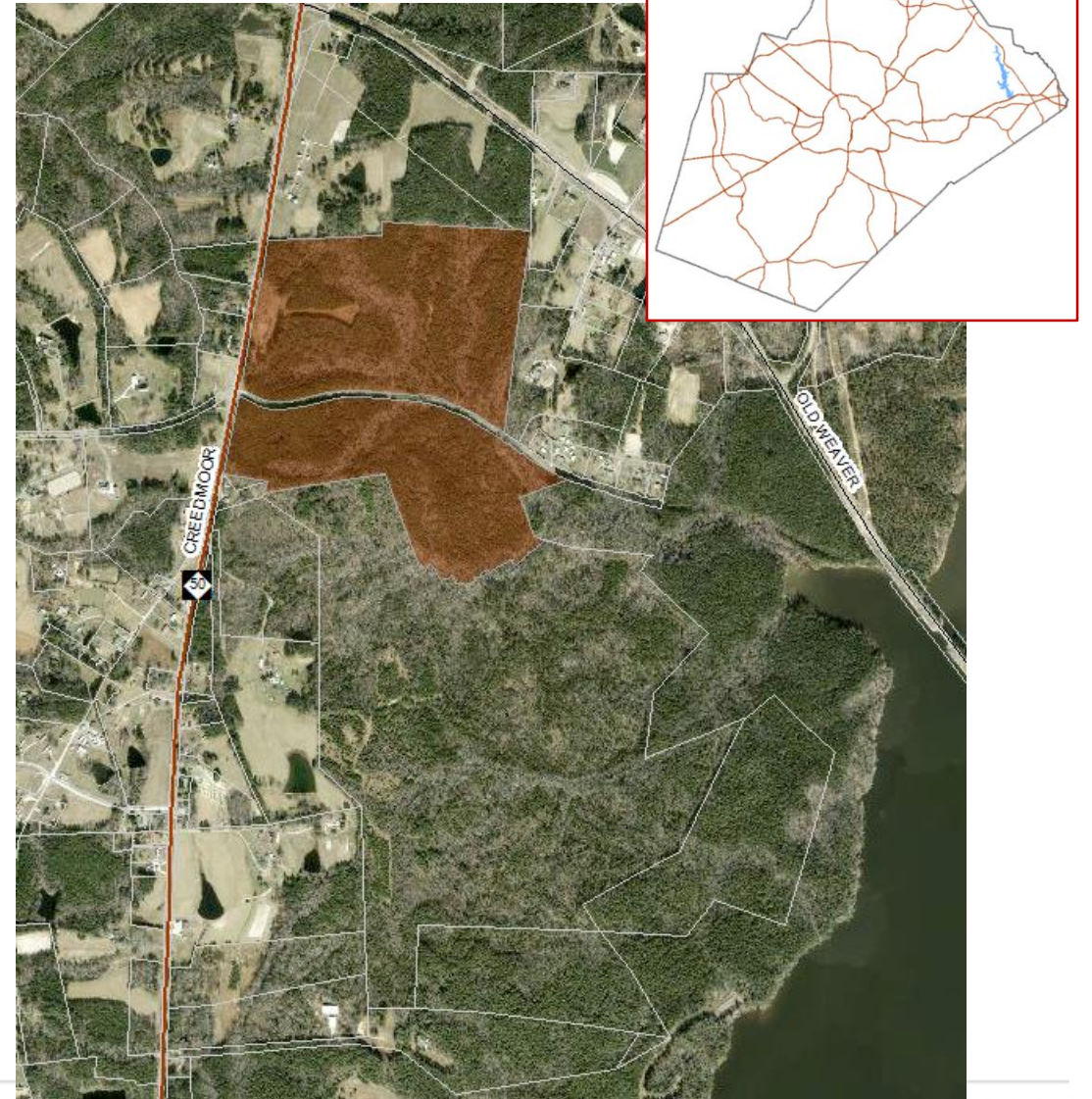
Robertson Millpond Preserve

- Land acquisition began in 2013
- Currently 777 acres acquired
- Additional acres possible
- At 777 acres would be the County's biggest preserve



Sinclair Nature Preserve

- Land acquisition began in 2007
- 122 acres
- Adjacent City of Raleigh Angell property – 216 acres
- Adjacent US Army Corps of Engineers Property – Falls Lake



Existing Park Improvements



- Adopted 2017
- Last Parks Bond 1993
- Nine facilities; 2,100 acres
- 1,430,828 Visitors

American Tobacco Trail

Tier One	Tier Two	Tier Three
<ul style="list-style-type: none">• Water Utility Connections & Fountains• Comfort Station Improvements & New Restroom• Parking Renovations• Event Space	<ul style="list-style-type: none">• Comfort Station Improvements• Lighting• Small Shelter at Trailhead	<ul style="list-style-type: none">• Lighting• Small Shelter at Trailhead• Trail Overlooks• Caboose Kiosk at Trailheads• Trail Pull Offs• Landscape, Signage, & Site Furnishings
\$5,100,100	\$1,400,000	\$1,000,000

* 2018 Dollars

WAKE COUNTY

American Tobacco Trail

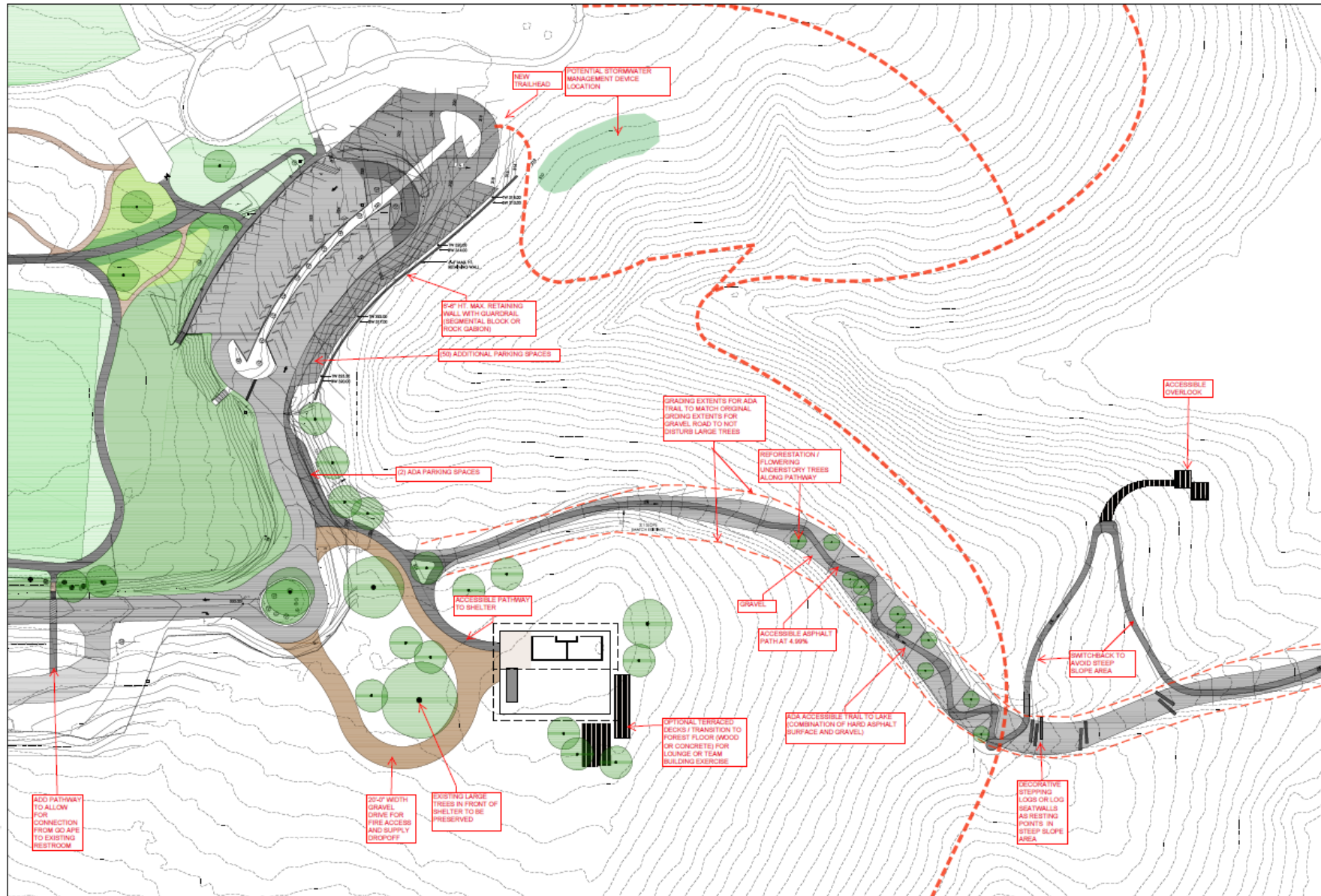


Blue Jay Point County Park

Tier One	Tier Two	Tier Three
<ul style="list-style-type: none">• Education Pavilion• Trail Access to Lakefront• Nature Playground• Parking Improvements	<ul style="list-style-type: none">• Kayak Beach• Waterfront• Overlooks	<ul style="list-style-type: none">• Six Forks Kayak Access• Park Loop Trail• Challenge Hiking Trails• Small Shelters• Park Center Expansion• Garden• Landscaping, Signage, & Site Furnishings
\$4,200,000	\$700,000	\$1,100,000

* 2018 Dollars

Blue Jay Point County Park



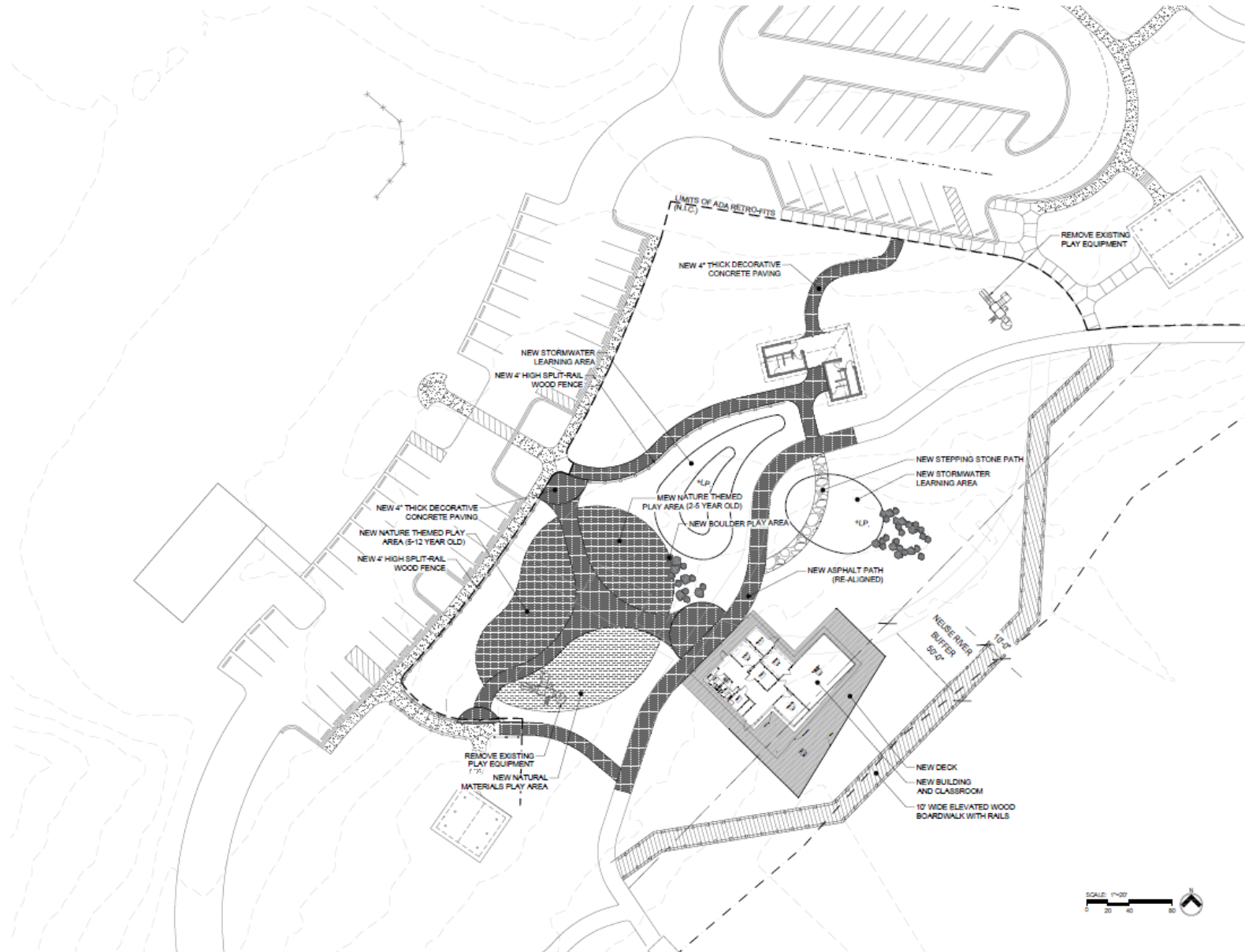
Crowder County Park

Tier One	Tier Two	Tier Three
<ul style="list-style-type: none">• Park Center• Back Porch Classroom• Nature Playground• Back Porch Overlook & Boardwalk• Parking Improvements• Additional Trails	<ul style="list-style-type: none">• Fitness Equipment	<ul style="list-style-type: none">• Natural Surface Trail• Playground• Gardens• Ten-Ten Road Sidewalk• Staff Kayak/Canoe Access• Parking• Landscape, Signage, & Site Furnishings
\$3,800,000	\$50,000	\$1,150,000

* 2018 Dollars

WAKE COUNTY

Crowder County Park



Harris Lake County Park

Tier One	Tier Two	Tier Three
<ul style="list-style-type: none">• Kayak Access and Launch• Disc Golf/Youth Disc Golf• Comfort Station/Restroom (Disc Golf)• Parking Expansion• Connector Trails	<ul style="list-style-type: none">• Park Center• Park Loop Greenway Trail• Tree Top Trail• Internal Connector Trails• Overlook Decks• Parking Expansion• Road Extension	<ul style="list-style-type: none">• Mountain Bike Trail• Nature Playground• Playground• Park Loop Road• Parking• Landscape, Signage, & Furnishings
\$4,000,000	\$7,500,000	\$2,500,000

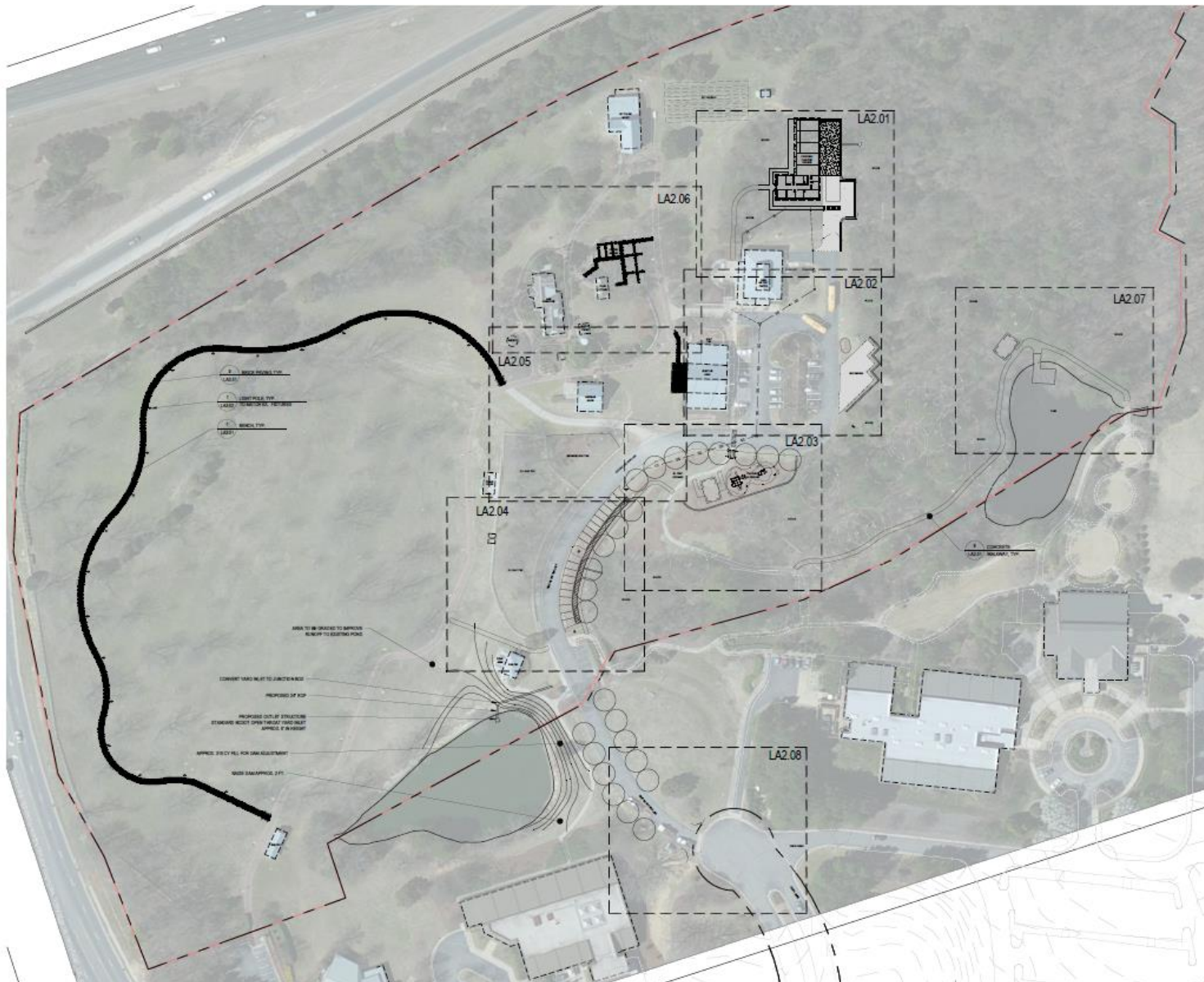
Harris Lake County Park



Historic Oak View County Park

Tier One	Tier Two	Tier Three
<ul style="list-style-type: none">• Themed Playground• Shelter• Main House Exhibits & Improvements• Pecan Grove Loop Trail• Pond Trail• Parking Expansion	<ul style="list-style-type: none">• Gardens/Crop Areas• Pond Overlooks & Platforms• Sidewalk to Office Park from Poole Road• Parking• I-40 Sound Barrier	<ul style="list-style-type: none">• Livestock Barn• Interactive Play Elements• Trails• Maintenance Yard/Facility• Landscape, Signage, & Furnishings
\$2,300,000	\$1,400,000	\$1,700,000

Historic Oak View County Park



OVERALL
LAYOUT PLAN

60' 30' 0' 30' 60' 120'
SCALE: 1" = 60'

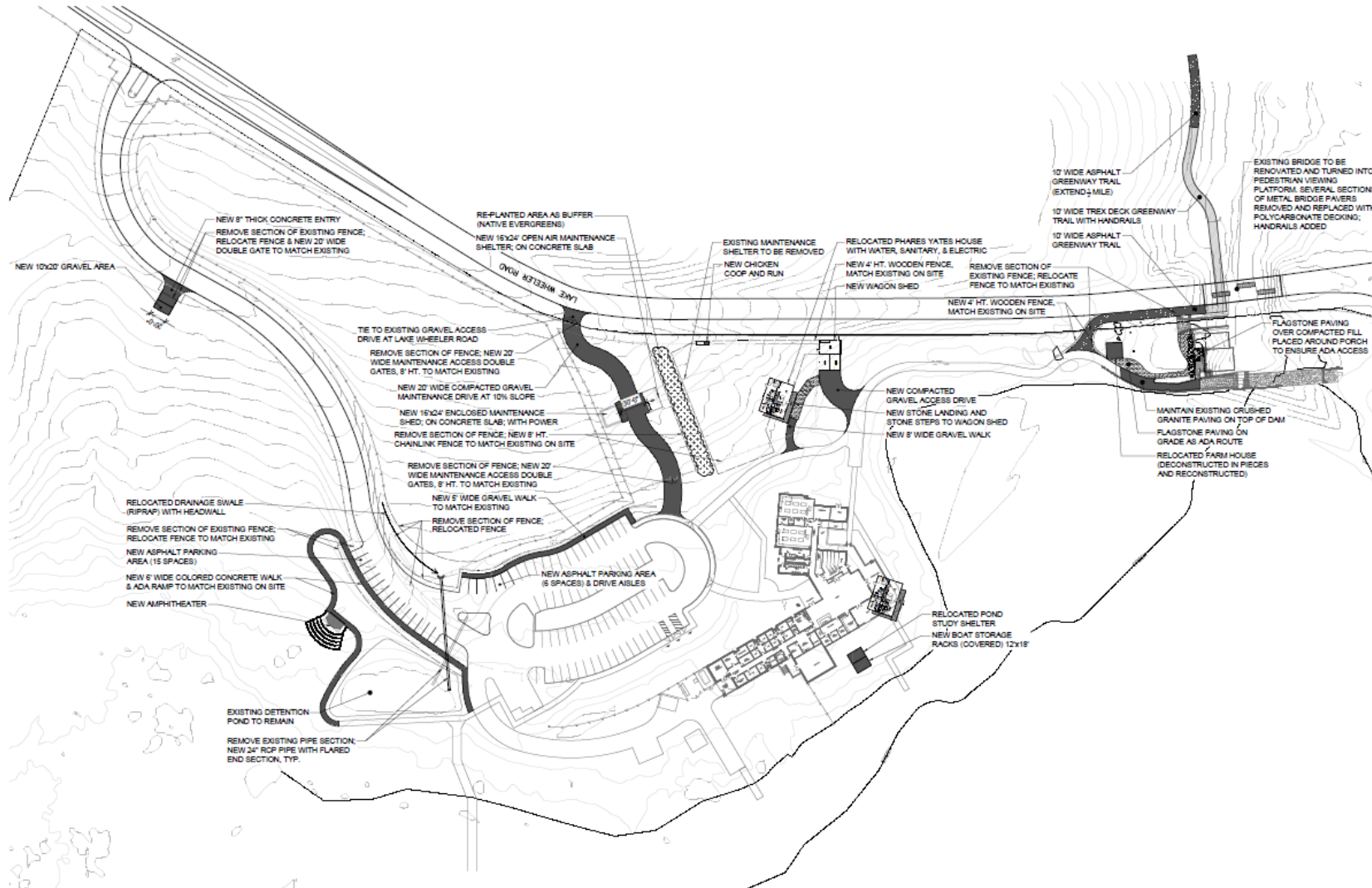
WAKE COUNTY

Historic Yates Mill County Park

Tier One	Tier Two	Tier Three
<ul style="list-style-type: none">• Access to Water's Edge• Trail to Mill• Creekside Trail Boardwalk• Phares Yates House• Parking Expansion	<ul style="list-style-type: none">• Canoe/Kayak Launch Area• Amphitheater Classroom• Overlooks & Trail Improvements	<ul style="list-style-type: none">• Interpretive/ Educational Elements• Millpond Loop Trail• Trail Connections• Mill Village Buildings• Canoe/Kayak Storage Building• Maintenance Shelter/Building• Landscape, Signage, & Furnishings
\$3,500,000	\$900,000	\$300,000

* 2018 Dollars

Historic Yates Mill County Park



SCALE: 1"=40'
0 20 40 80

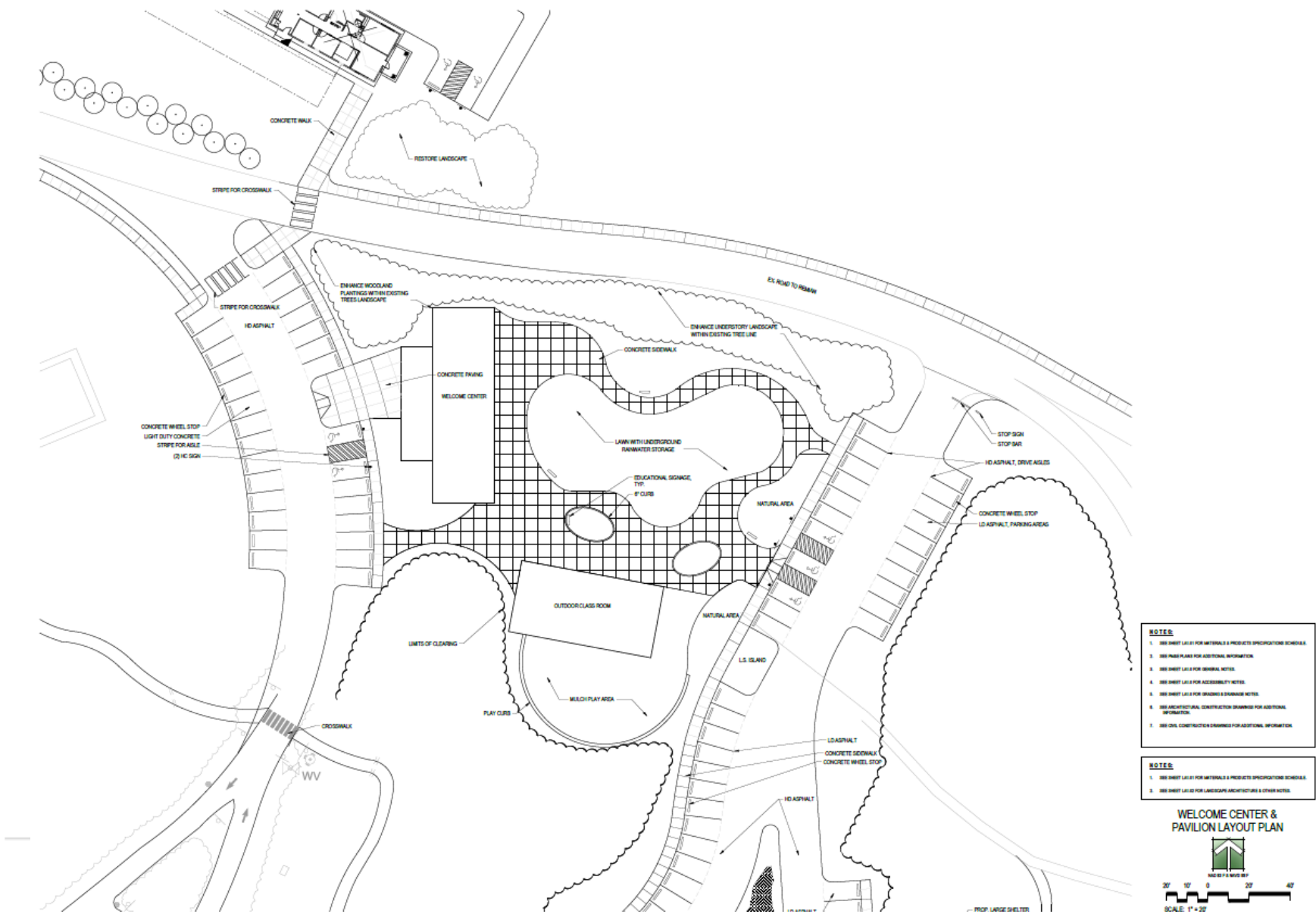
WAKE COUNTY

Lake Crabtree County Park

Tier One	Tier Two	Tier Three
<ul style="list-style-type: none">• Park Loop Trail• Sidewalk to Aviation Parkway• Parking• New Park Center & Classroom• Maintenance Facility Improvements	<ul style="list-style-type: none">• Parking Expansion• Natural Playground• New Picnic Shelter	<ul style="list-style-type: none">• Activity Spaces• Boardwalk Across Lake• Western Wetlands Trail• Boardwalk on Beech Nature Trail• Mountain Bike Trailhead• Playgrounds• Car-top Boat Launch• Mountain Bike Trails• Trail Connections• Landscape, Signage, & Site Furnishings
\$3,500,000	\$1,600,000	\$2,000,000

* 2018 Dollars

Lake Crabtree County Park



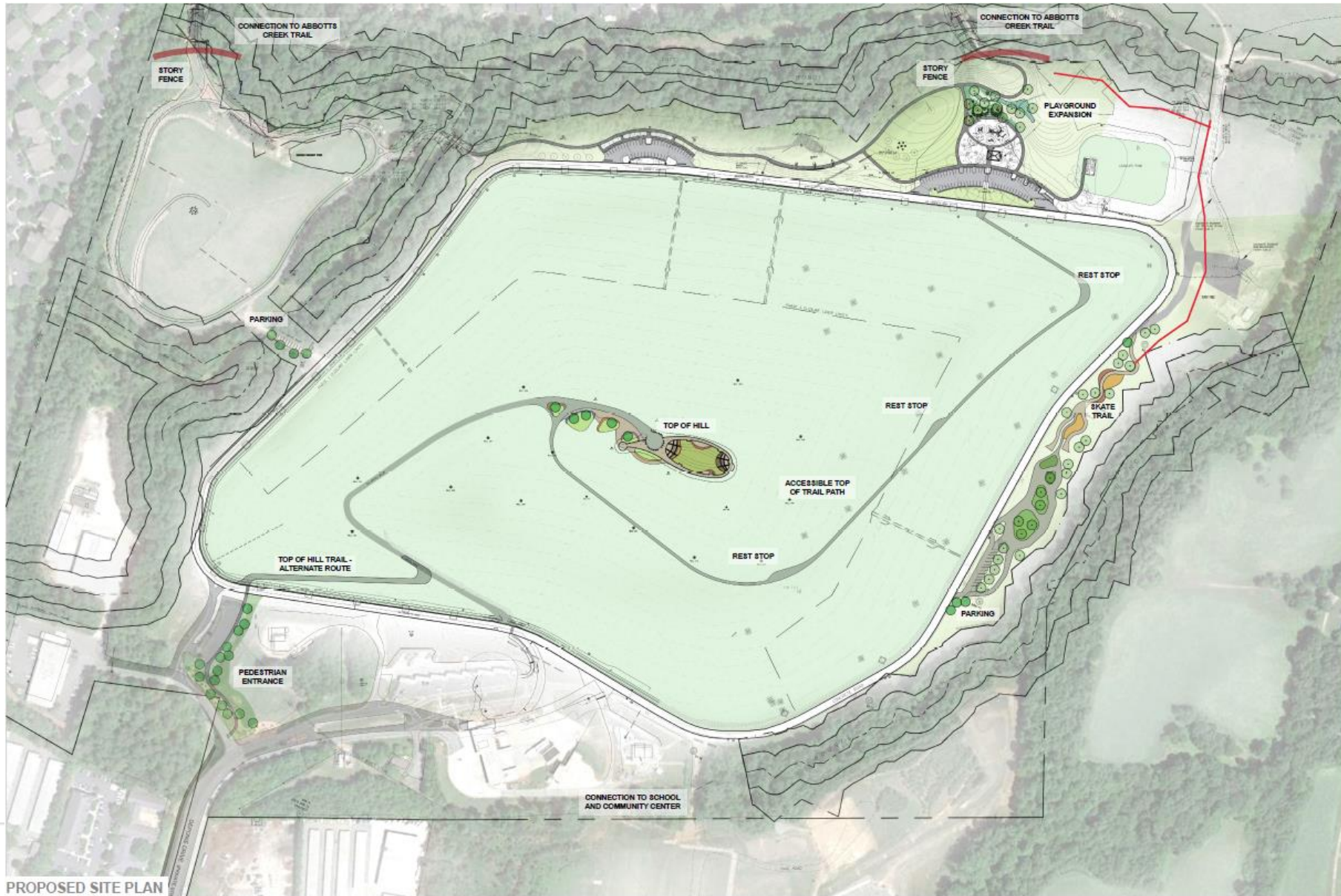
North Wake Landfill County Park

Tier One	Tier Two	Tier Three
<ul style="list-style-type: none">• Top of the Hill Trail• Skate Facility Trail• Parking	<ul style="list-style-type: none">• Themed Playground• Shade Structures• Parking Expansion• Sidewalk to Deponie Drive	<ul style="list-style-type: none">• Mountain Bike Trails• Art Loop Trail• Shelters• Specialty Planters• Lighting• Hillside Landscape• Specialty Fencing• Landscape, Signage, & Site Furnishings
\$2,500,000	\$2,500,000	\$2,200,000

* 2018 Dollars

WAKE COUNTY

North Wake Landfill County Park



Recommended PROS CIP

[illegible]