

Water Partnership Annual Report

Growth, Land Use & Environment Committee
March 12, 2018



@wakegov



wakegov.com

Wake County Water Partnership 2017 Annual Report



The mission of the Water Partnership shall be to facilitate collaboration to promote leadership in water management and sustainability and promote health by providing high quality water throughout Wake County.

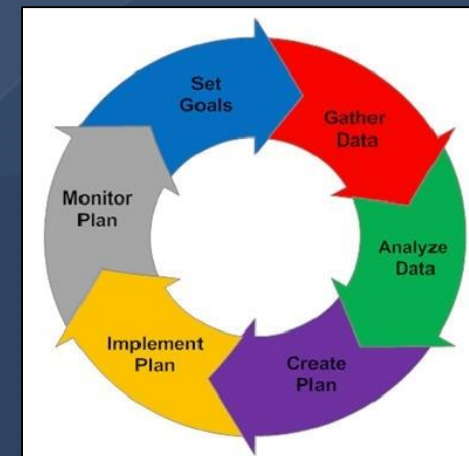
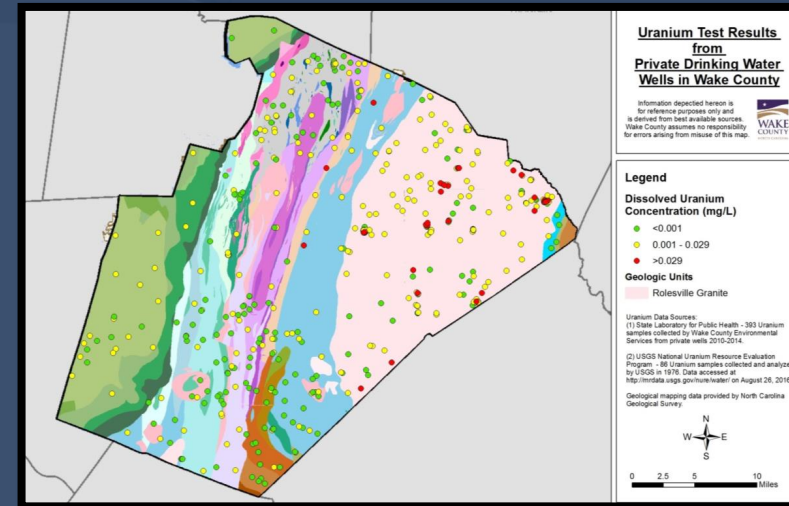
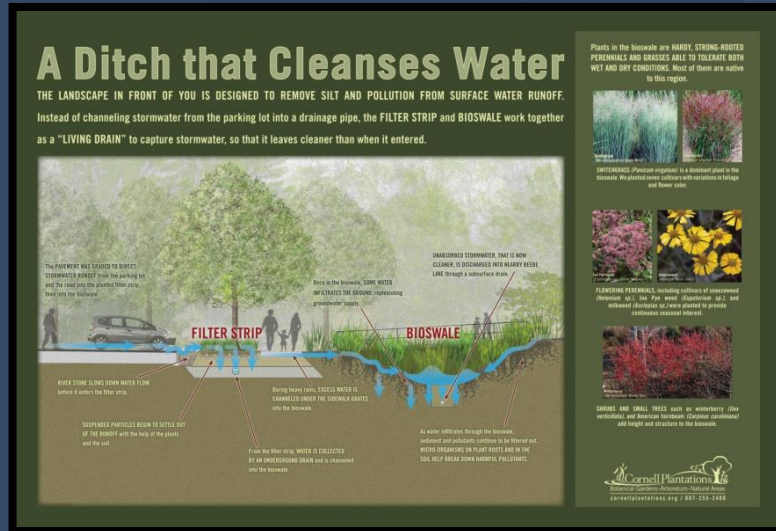
Introduction

- ❖ May 2016: Water Partnership Committee Formed
- ❖ March 2017: First Water Partnership Meeting
- ❖ April 2017: Subcommittees Formed
- ❖ June 2017: Election of Chair, David Knight; bimonthly meetings
- ❖ January 2018: Water Partnership Retreat

Accomplishments

- ❖ Rules Review
- ❖ Standing Subcommittee Formation
- ❖ Delegation sent to One Water Summit
- ❖ Wake County Integrated Water Management Study scoping
- ❖ January 2018: Water Partnership Retreat

Subcommittees



COMPREHENSIVE
PLANNING

Green Infrastructure

Chair: Dr. Joseph Threadcraft

- ❖ Green Stormwater Infrastructure (GSI) Survey
- ❖ City of Raleigh GSI Presentation
- ❖ Initiated Collaborative GSI Project



• Photo Credit: NCSU Cooperative Extension



Wake County Water Partnership Green Stormwater Infrastructure (GSI) Survey

Name of Stakeholder or Organization:



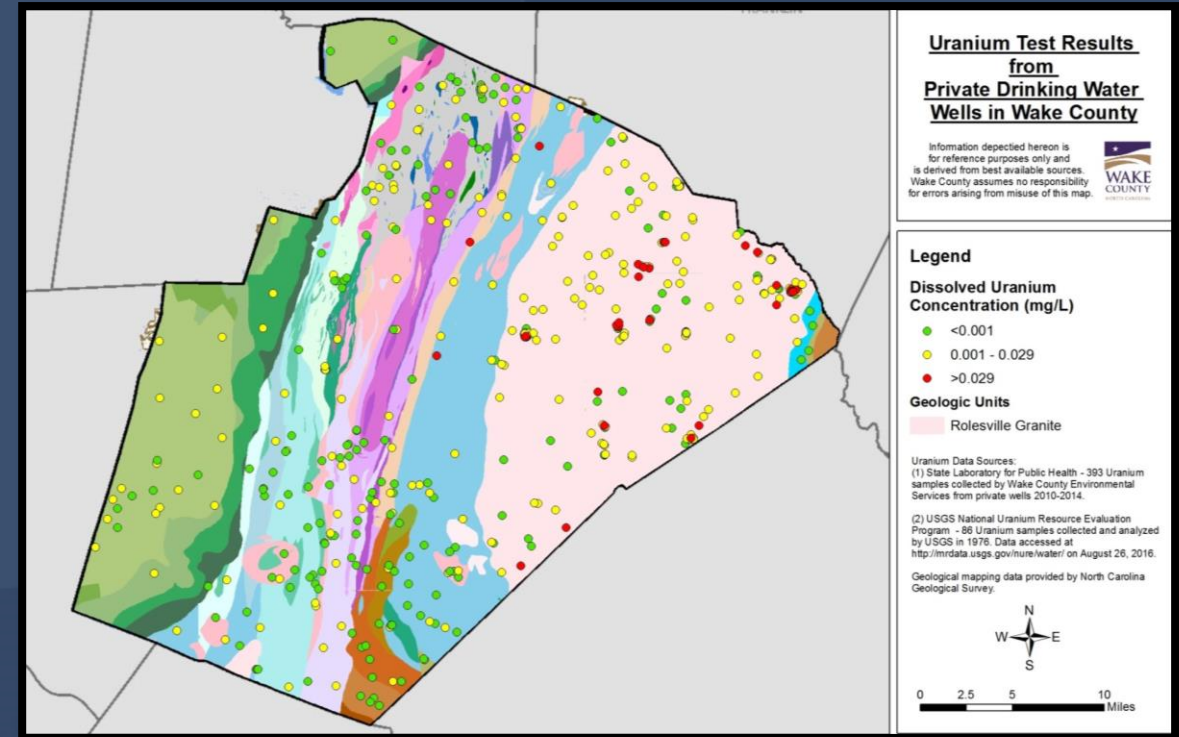
Has your organization implemented GSI project? If so, how many?

What types of GSI projects has your organization implemented?

Education and Outreach

Chair: Bill Holman

- ❖ Wells
- ❖ Septic Systems
- ❖ Stormwater Control Devices



Coordination

Chair: Jeff Adkins

- ❖ Regional Organization Summary Report
- ❖ Wake Up Wake Presentation

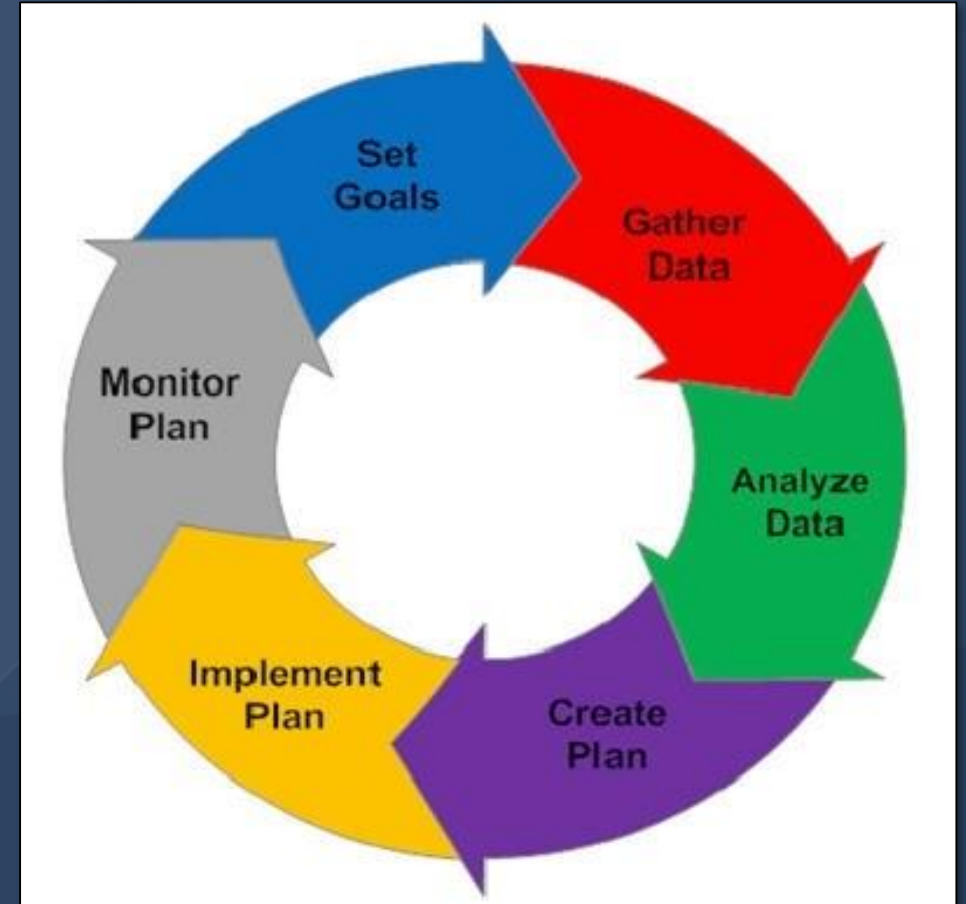


Comprehensive Planning

Chair: Joe Moore

❖ Initiated Scoping of Wake County Integrated Water Management Plan

- Water Quantity
- Water Quality
- Water Reuse
- Green Stormwater Infrastructure



Rules Review

- ❖ Offsite Septic
- ❖ Permitting Private Wels
- ❖ Stormwater and Sediment & Erosion Control



Horizon

- ❖ 2018 One Water Summit
- ❖ Integrate One Water Approach
- ❖ Wake County Integrated Water Management Study
- ❖ Collaboration on Green Infrastructure Projects

