



Moving Beyond Hunger

A Comprehensive Food Security Plan

Katherine Williams, Wake Extension Director
Erin Sullivan White, ED, Community Food Lab

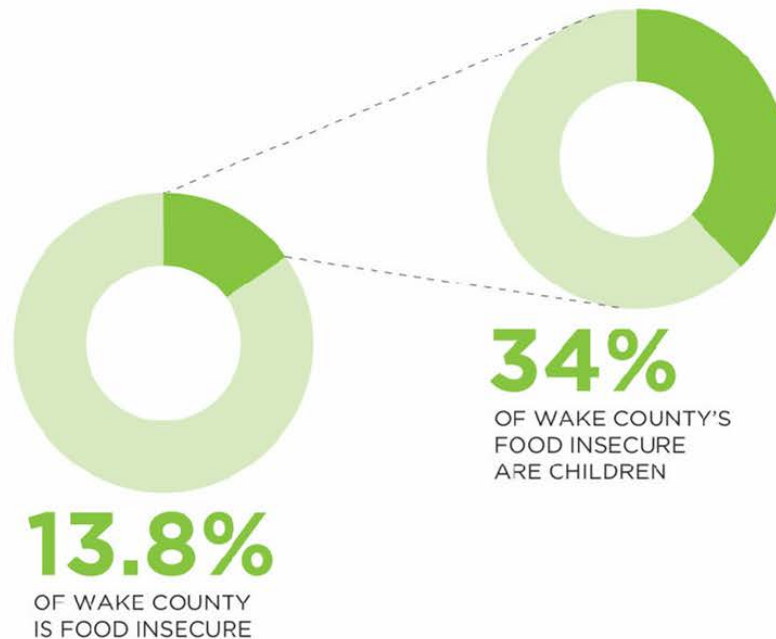


Food Security in Wake County

In 2014,

131,800 Wake County residents,
or 13.8% of the County, were
food insecure.
That's 1 in 7 Wake County residents.

Nearly **1 in 5 children**
in Wake County, or 44,681
children, are food insecure.



Timeline

- June 2017 Received Plan
- August 2017 Align with established or emerging county efforts
- October 2017 Define roles and capacity of Wake County within the plan
- Nov 2017 Consult Experts & Partners
- Feb 2018 Recommend priority actions for Wake County

Food Security Plan Snapshot

3 - YEAR PLANNING CYCLES

5 STRATEGIES

STRATEGY

1

Ensure Food Access

STRATEGY

2

Communicate and Educate

STRATEGY

3

Develop Sustainable Food Supply

STRATEGY

4

Build Economic Opportunity

STRATEGY

5

Leading through Networks

5 INDICATORS (TARGETS)

24 LEAD ORGANIZATIONS

41 ACTIONS

120+ EXISTING OR POTENTIAL PARTNERS

Five Indicators

Meal Gap

Community
Participation

County-Based
Food Supply

Organizational
Connections

Food Job Index

- Multi-faceted measures to serve as shared targets for ALL partners
- Capital Area Food Network will facilitate development and tracking of indicators
- Detailed descriptions on page 69 of the Plan

3-Year Action Cycles



- CAFN to hold quarterly progress meetings
- CAFN to produce Annual Progress Reports
- Food security is an emerging field - a short cycle allows new models and approaches to be incorporated
- Frequent reflection allows learning and adjustment
- Wake's growing population presents a dynamic set of challenges - a flexible plan can adapt

Ongoing Efforts

- 1) Hire Food Security Program Manager (**Combined Report with CAFN, June/July, 2018**)
- 2) Deploy 4 Fulltime VISTAS (***Mapping, Metrics, Engagement Tools***)
- 3) Continue School-based efforts
- 4) Strengthen Regional Food System Connections



Emerging Priorities



NextGen Farming Pilot Walnut Hill Preserve



Food Hub

Community Training &
Development Center



Agricultural Education Hub: Walnut Hill Preserve



Important Shifts

Food Security Work Group & CAFN



Emergency to
Capacity-building



Individual Child to
Family



Single Sector to Food
Systems Approach