

Presentation To:

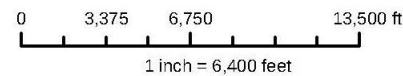
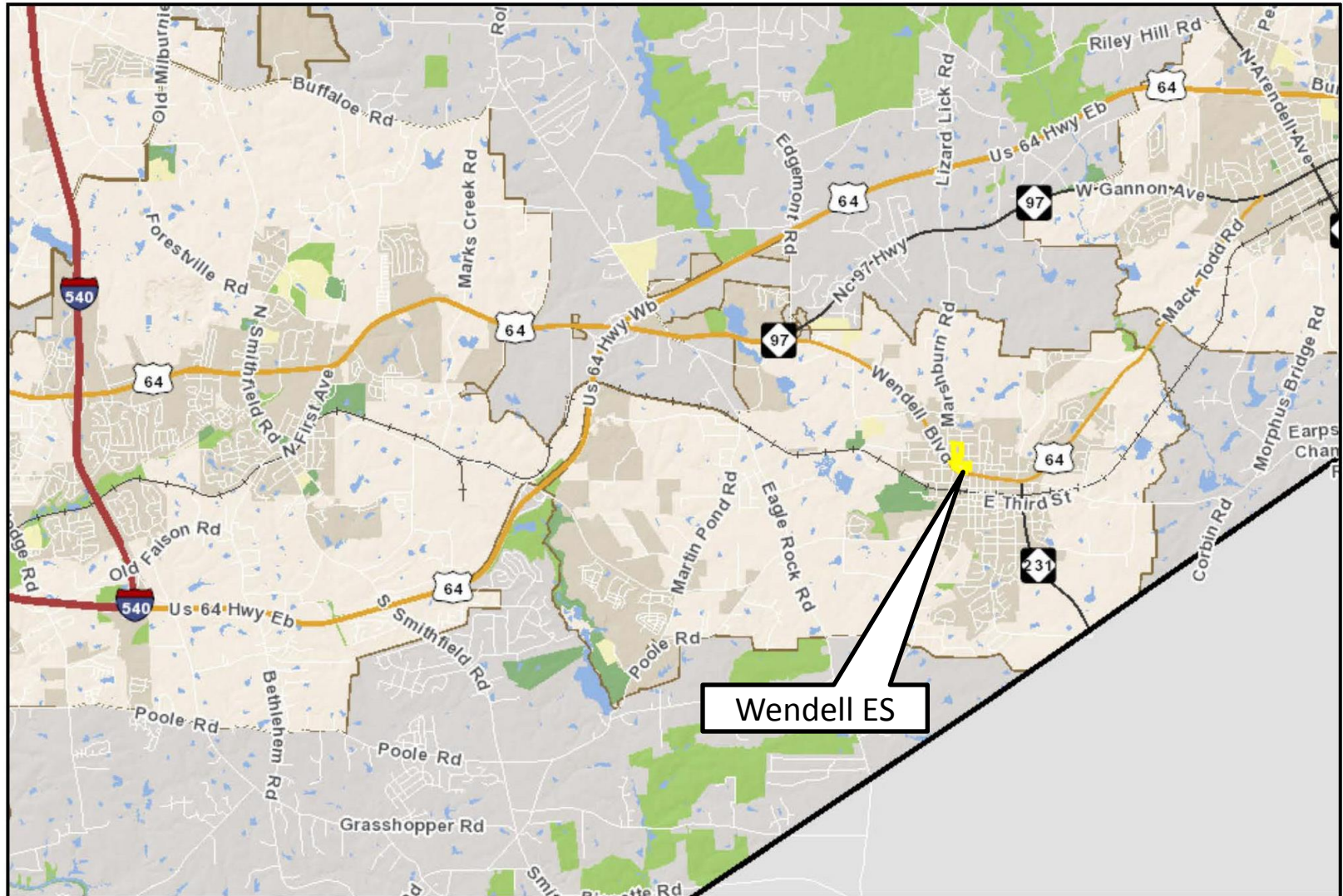
Wake County Board of Commissioners

Request for Approval and Funding of
The Wake County Board of Education Acquisition of a
1.080 Acre Parcel Adjacent to Wendell Elementary School
(226 West Academy Street, Wendell, NC)

(Second Reading)

Betty L. Parker, Senior Director of Real Estate Services
Wake County Public School System
October 16, 2017

GIS Area View



Disclaimer
IMaps makes every effort to produce and publish the most current and accurate information possible. However, the maps are produced for information purposes, and are NOT surveys. No warranties, expressed or implied, are provided for the data therein, its use, or its interpretation.

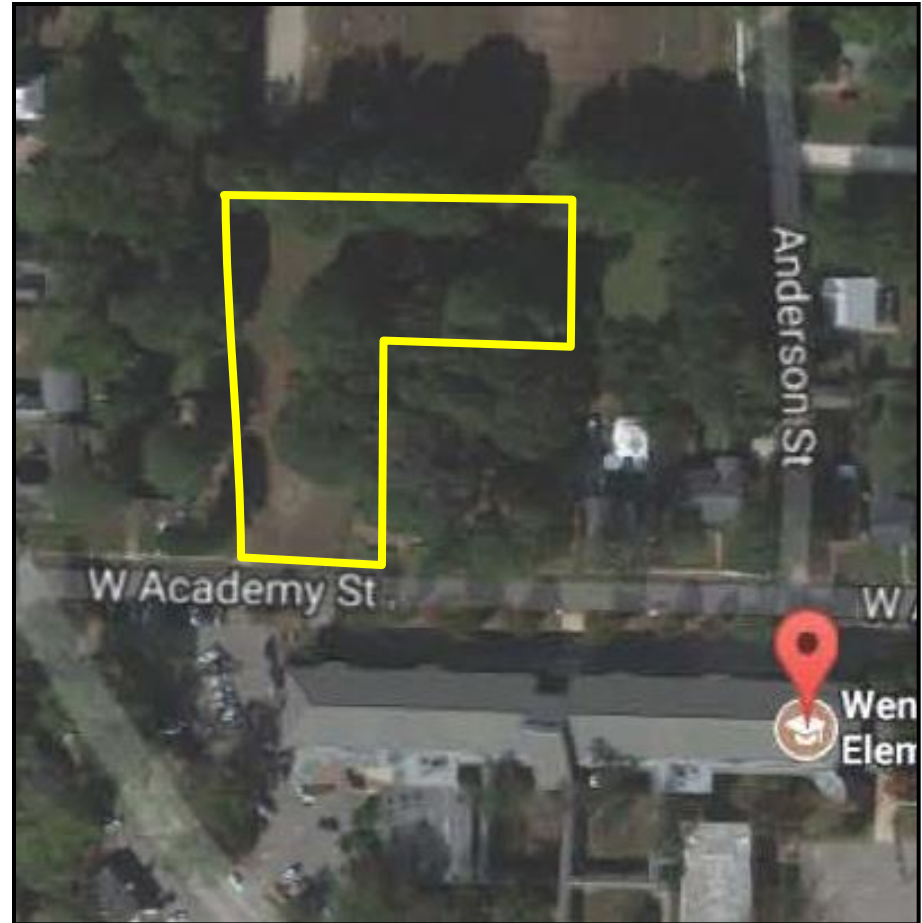
Aerial School and Subject Parcel View



Subject Parcel View



GIS View (2013)



Google Maps View After House Removal

Contract Terms & Information

- **Seller: Anthony M. Gerardi and Stephanie S. Gerardi**, who acquired the property in 2014.
- **Location:** 226 West Academy Street, Wendell, NC, adjacent to Wendell ES.
- **Asset Description:** ±1.080 acre residential tract from which a single family residential structure and appurtenances were removed in 2015.
- **Negotiated Purchase Price:** \$74,800.
- **Valuation:** Appraised value is \$68,000. Current Wake County Tax value is \$35,100.
- **Proposed Utilization:** Direct access from Wendell ES to Thompson Field, aids design flexibility for the future Wendell ES major renovation, provides opportunities to expand parking.

End of 2nd Reading presentation.

Questions?