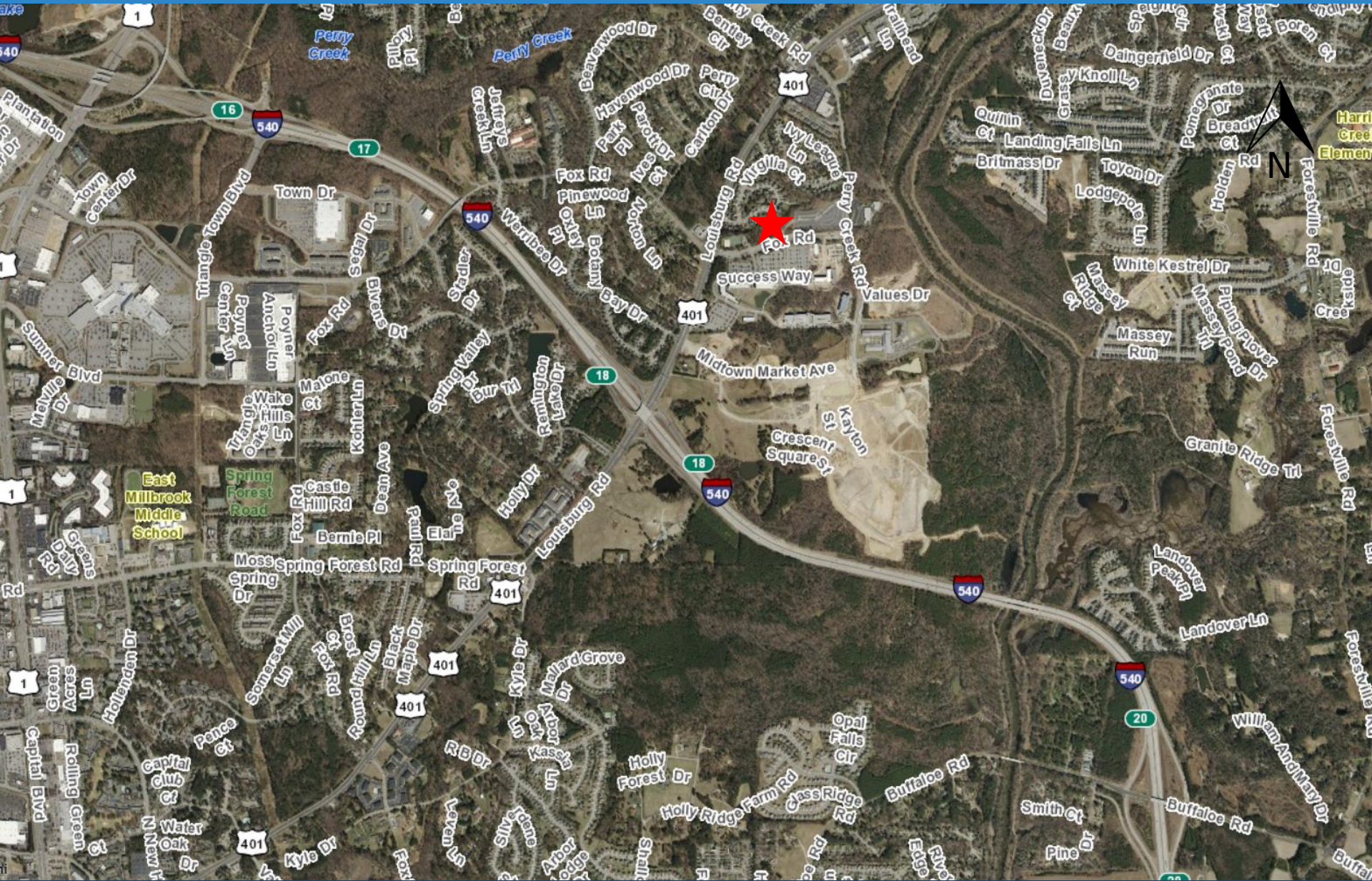




New Hope EMS Station

Schematic Design Presentation

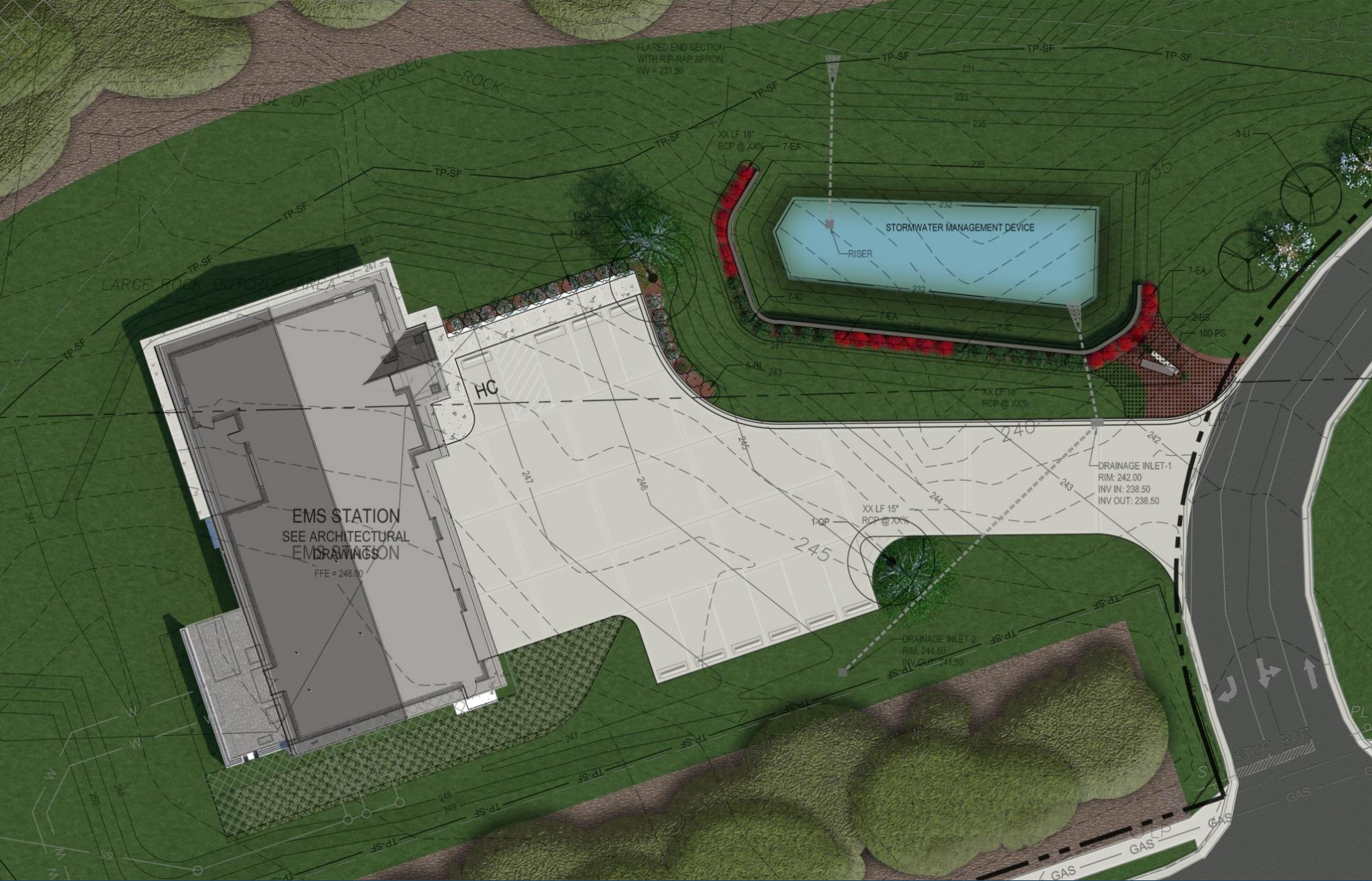




Area Map



Vicinity Map





Building Plan







BUILDING STRATEGIES

- Natural Daylighting in All Regularly Occupied Spaces.
- Durable, Reliable Materials. Designed as a 50 Year Facility.
- Low VOC Materials.
- Regional and Recycled Materials.
- Occupancy and Daylighting Sensor Lighting Control.
- Low-Flow Plumbing Fixtures.
- Efficient HVAC Systems.
- Collection and Storage of Recyclables.

SITE STRATEGIES

- Preserve Existing Site Trees and Landscape Screening.
- Native and Drought Tolerant Landscaping. No Irrigation.
- High Albedo, Durable Concrete Paving.
- Minimize Site Disturbance.

Questions?