



Wake County Comprehensive Plan

Land Use Plan and Transportation Plan Update
Early Phase Work 2017



www.wakegov.com

1

Existing Conditions

- Land Use Plan with solid but high level goals
- Area Plans with differing levels of sophistication/ applicability
- Separate Transportation Plan
- Other plans



www.wakegov.com

2

Known Issues

- Old Plans
- Plans not integrated
- Goals not tied to strategic actions
- Policies not linked to allow consistency across the agency and across agencies



www.wakegov.com

3

High Level Goals of this Effort

- Create goals in key "Topic Areas"
- Test the community's perspectives on some "Big Questions"
- Set policies when ready and establish clear next steps when not



www.wakegov.com

4



Wake County Comprehensive Plan Poll Responses September 2017



www.wakegov.com 5

Wake Comp Plan RFP Focus Areas Surveys Findings

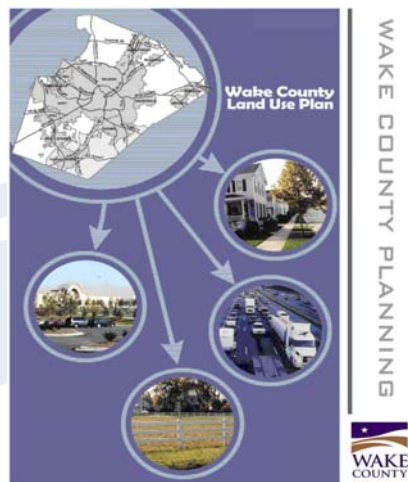
22 RESPONSES*

- ☐ 7 Planning Board Members
- ☐ 15 Municipal & County Planners

*Note – Some respondents did not answer all questions

 www.wakegov.com 6

Wake County Current Land Use Plan



FACTORS DRIVING PLAN

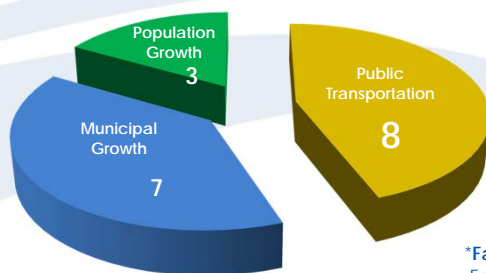
- Population Growth
- Municipal Growth
- Farmland and Open Space
- Public Transportation



Question 1

Rank the **1997 "DRIVING FACTORS"** in the order of most importance to you in **2017**

Ranked #1*



*Farmland & Open Space was a "Driving Factor" in 1997 that did not receive a first place ranking among the eighteen (18) respondents

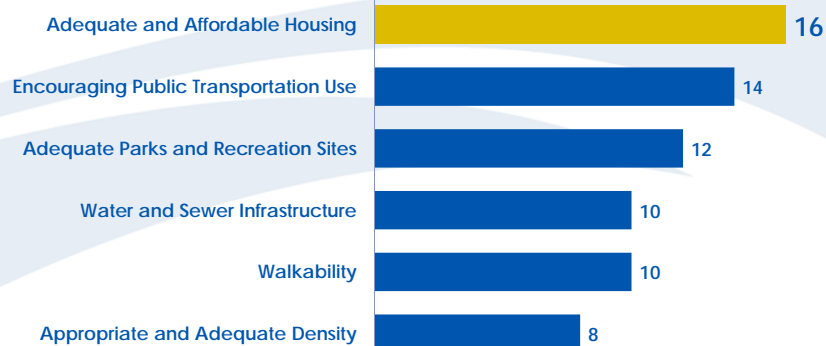


www.wakegov.com

8

Question 2

Top 6 emerging issues to address in new Wake Comp Plan



www.wakegov.com

9

Question 3

2 or 3 other factors you see emerging within the next 10 years

"KEYWORDS & KEYPHRASES"

- Watersheds
- Infrastructure Investment
- Urbanizing suburbs
- Open space/Parks
- Healthy communities
- Urban agriculture
- Equity divide
- Economic diversity
- Affordable housing
- Diverse workforce

- Aging population
- Groundwater
- Perk capability
- More Mixed Uses
- Rethink Urban Service Areas
- Sustainability
- Sprawl
- Higher density residential
- Lack public transportation
- Balance growth & ecology

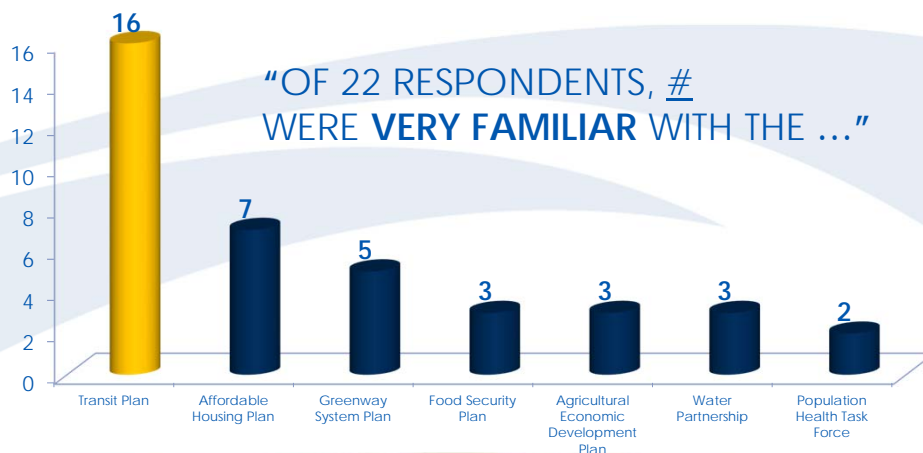


www.wakegov.com

10

Question 4

"FAMILIARITY" With Current County-wide Initiatives



www.wakegov.com

11

Planning Board - Additional Questions

1. Give us your perspective on how we should balance community goals with property rights.

Preferences

Balance community goals with property rights

2. How should we balance community goals with development costs?

Preferences

Both are important – higher priority: community goals



www.wakegov.com

12

Planners – Additional Questions

1. What new policies can Wake County use to achieve higher densities and a wider range of land uses?

Among Responses

Incorporate Transit Plan corridors into the updated land use plan

2. Cite the challenge(s) of planning for future growth in your urban services area while development is rapidly occurring in your municipal jurisdiction.

Among Responses

Overwhelming development can result in responsive rather than pro-active planning



www.wakegov.com

13

What We Need From You

- Perspectives on Key “Topic Areas”
- Ideas on the “Big Questions”
- Look for the Next Steps...



www.wakegov.com

14

Proposed Schedule*

Now – Nov 2017 – Frame the Study

Nov 2017 – Dec 2017 – Select the Consultant

Jan 2018 – May 2018 – Ask the Big Questions

May 2018 – Sep 2018 – Verify the Policies

Nov 2018 – Final Plan (This Phase*)

* The goal is to get the right plan



www.wakegov.com

15

Questions and Comments



www.wakegov.com

16



Wake County BOC Glue Committee 10/9/2017 Meeting



www.wakegov.com

17