

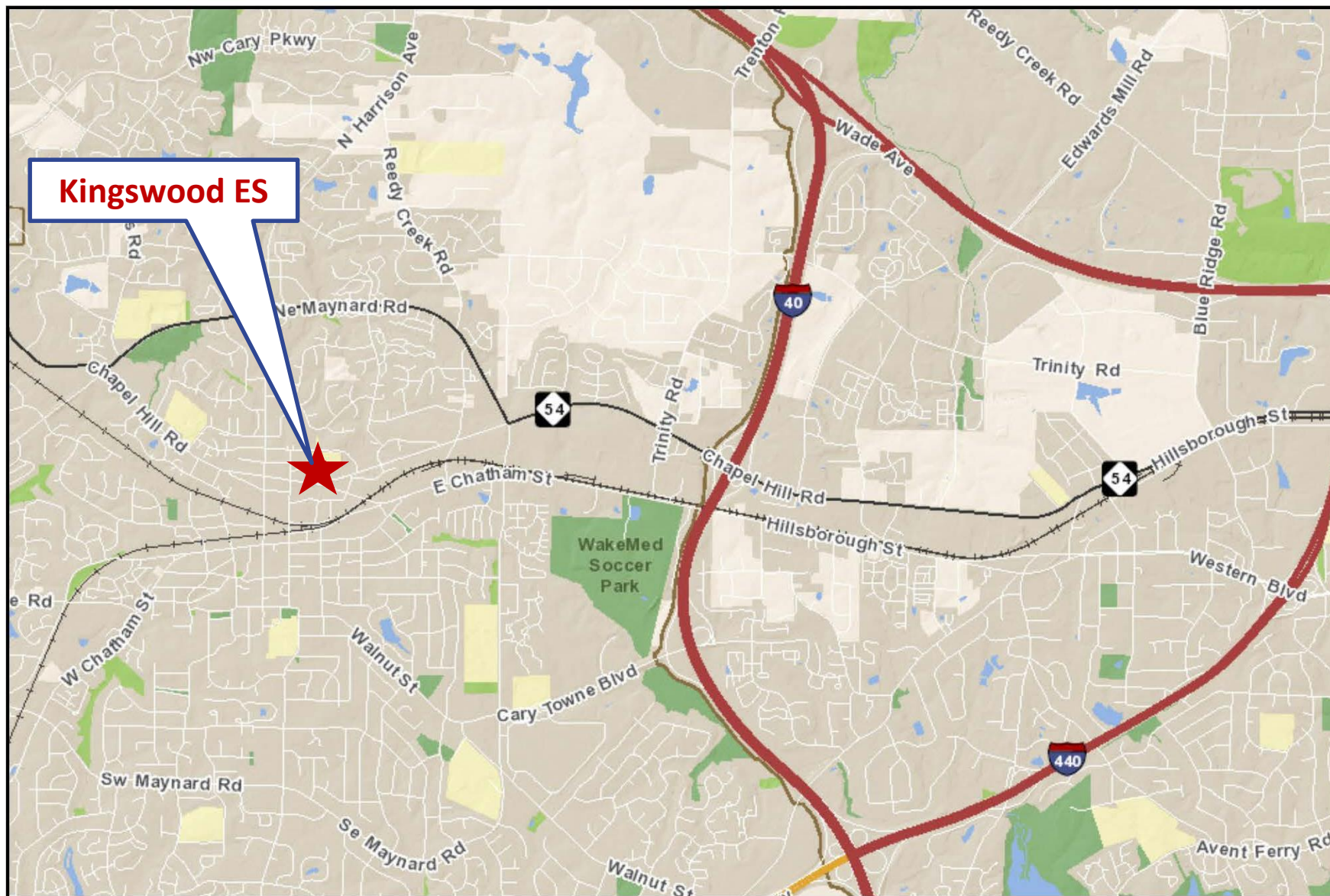
Presentation To:

Wake County Board of Commissioners

Request for Approval and Funding of
Board of Education Acquisition of a
0.367 Acre Parcel Adjacent to Kingswood Elementary
(516 Ferrell Street, Cary, NC)

(Second Reading)

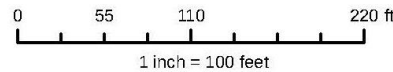
Betty L. Parker, Senior Director of Real Estate Services
Wake County Public School System
June 19, 2017



Aerial School and Parcel View



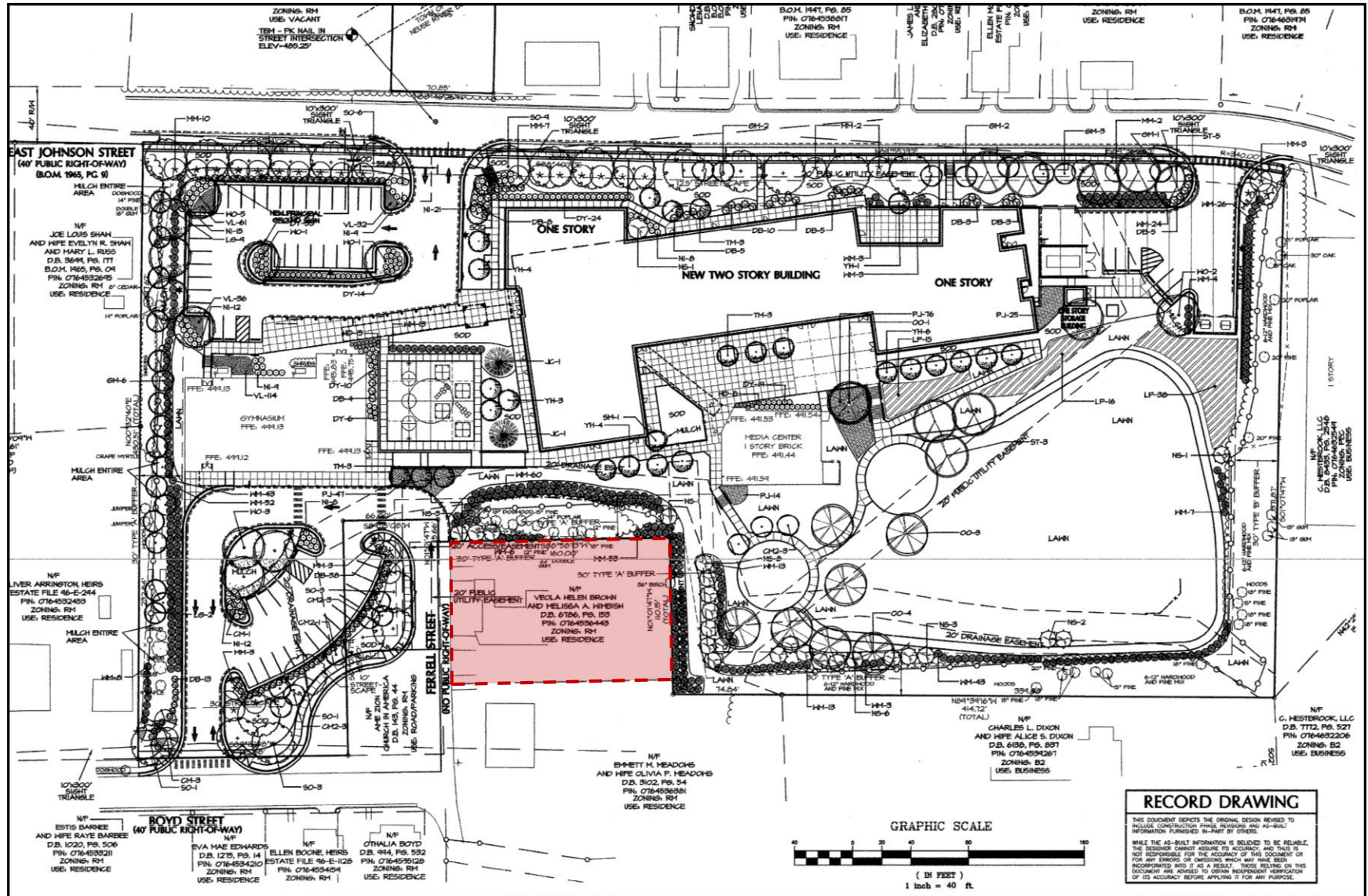
Kingswood ES & Wimbish Tract



Disclaimer

Maps makes every effort to produce and publish the most current and accurate information possible. However, the maps are produced for information purposes, and are **NOT** surveys. No warranties, expressed or implied, are provided for the data therein, its use, or its interpretation.

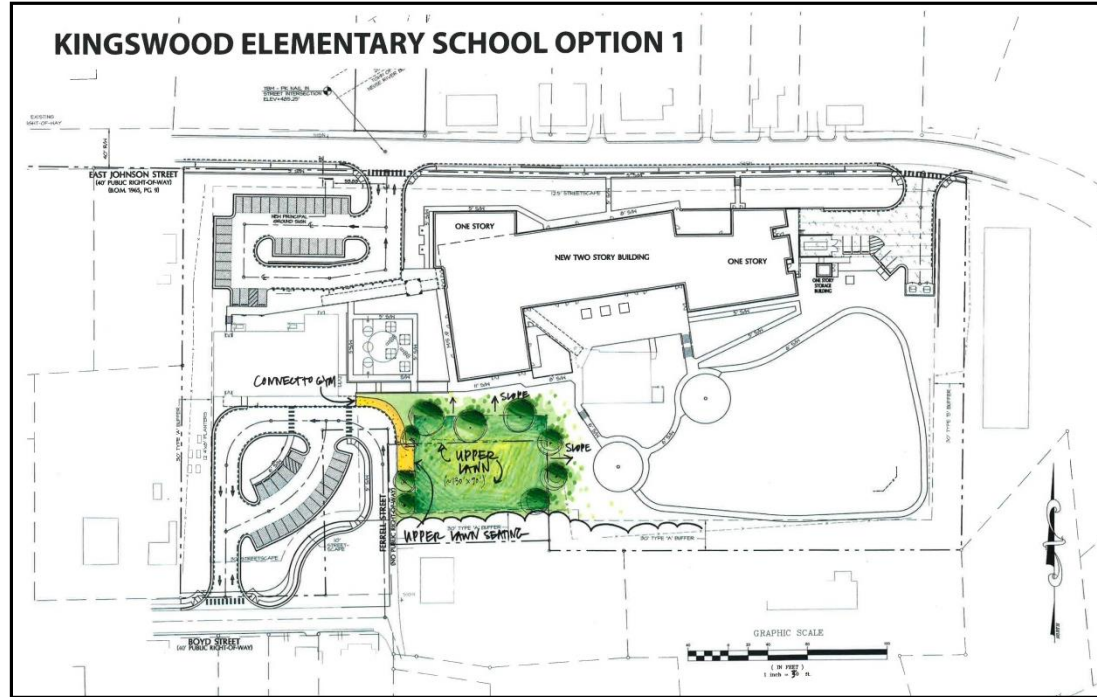
Kingswood Elementary School Site Plan



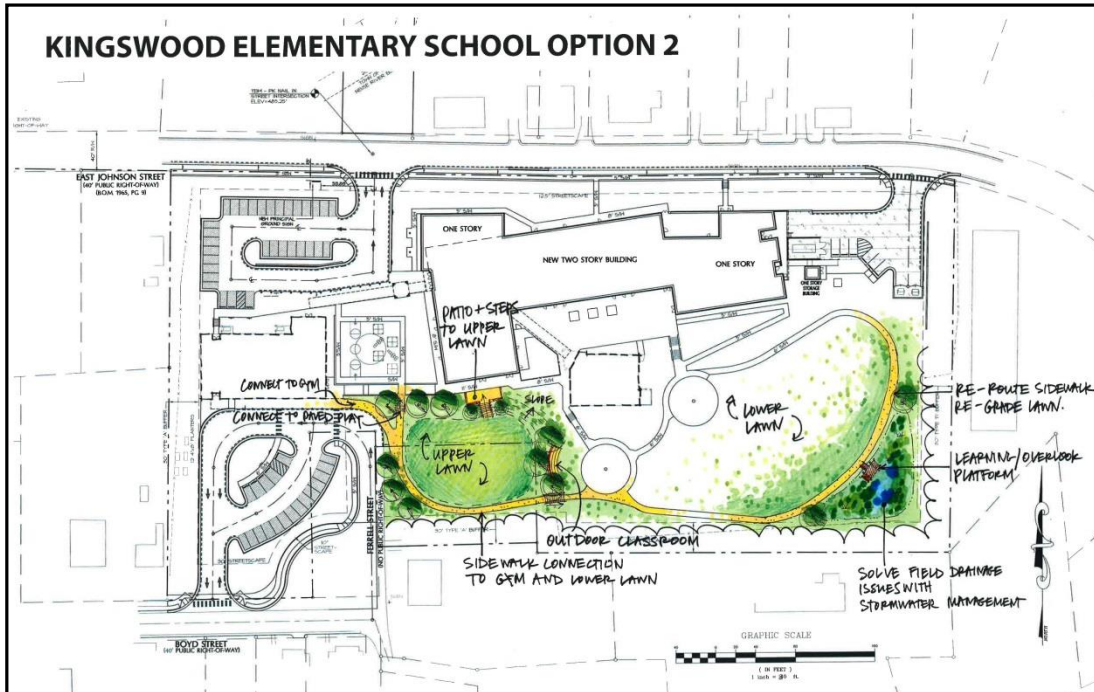
Preliminary Feasibility Studies

Option 1:

- Create upper playfield space
- Sidewalk connection to gym
- Improve adjacent landscaping
- Add upper field seating



KINGSWOOD ELEMENTARY SCHOOL OPTION 2



Option 2:

- Create upper playfield space
- Sidewalk connection to gym & lower playspaces
- Improve adjacent landscaping
- Add patio & steps for direct access from main building
- Improve lower field drainage
- Add stormwater management
- Regrade part of lower field area
- Create learning/overlook plateau
- Create outdoor classroom

Contract Terms & Information

- **Purpose/Proposed Utilization:** School site expansion to address limited play space and related program elements at Kingswood ES.
- **Seller:** Melesca A. Wimbish, unmarried, who acquired the property in 1995. The subject property has been owned by the Seller or her family for more than 60 years (Seller's family formerly owned the Kingswood ES site).
- **Location:** 516 Ferrell Street, Cary, NC, adjacent to Kingswood ES on its southern boundary.
- **Asset Description:** ±0.367 acre residential tract containing a single family residential structure of 1,068 square feet.
- **Negotiated Purchase Price:** \$100,000.
- **Valuation:** Appraised value: \$105,000.