



# Population Health Task Force Presentation to Wake County Board of Commissioners February 10, 2017

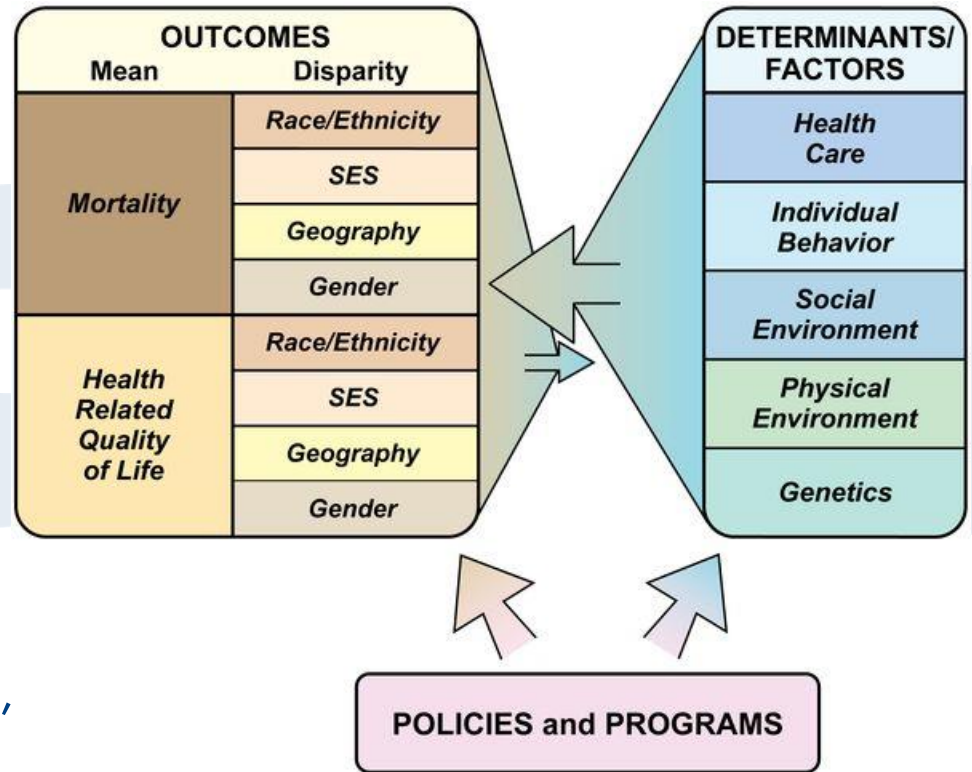


# Presentation Outline

- Introduction: Population Health
- Importance of Population Health to Wake County
- Board of Commissioners as “Conveners”
- Population Health Task Force Charge
- Alignment with BOC Goals
- Population Health Task Force Deliverable
- Why This Works
- Population Health Task Force Membership
- Time Line

# Introduction: Population Health

- The health outcomes of a group of individuals
- Includes distribution outcomes within the group.
- Groups can be geographic (counties, communities) or other defined groups (employees, ethnic groups, children, older adults, etc.)



Population Health Model

David A. Kindig, MD, PHD. "Improving Population Health: Ideas and Action". <https://uwphi.pophealth.wisc.edu>. April 2014. University of Wisconsin Population Health Institute, School of Medicine and Public Health. Web. 2/7/17. <https://uwphi.pophealth.wisc.edu/publications/other/blog-collection-final-2014-04-05.pdf>.

# Importance of Population Health to Wake County

Wake County ranked number 1 in NC for health outcomes in the County Health Rankings, 2016.

Measures that need work:

- **Sexually transmitted infections** (442.2; chlamydia cases per 100,000 population, 2013)
- **Adult obesity (25%;** % of adults reporting a BMI of 30 or more, 2012)
- **Physical inactivity(18%;** % of adults > 20 reporting no leisure time physical activity, 2012)
- **Mammography screening (71%;** % of female Medicare enrollees aged 67-69 that receive mammography screening, 2013)
- **Alcohol-impaired driving deaths (18%;** % of driving deaths with alcohol involvement, 2010-2014)
- **Children in poverty(14%;** % of children under age 18 in poverty, 2014)
- **Unemployment rate (4.8%;** % of population  $\geq$  16 unemployed but seeking work, 2014)

# Alignment with BOC Goals

Population health aligns broadly with community health, growth and sustainability, public safety and social and economic vitality goals including:

- Building a “culture of health”
- Preserving our environment and healthy communities
- Providing a safe, secure and healthy community
- Improving economic and social opportunities in vulnerable communities

# Board of Commissioners as “Conveners”

Board of Commissioners are currently engaged with the public and private sectors in initiatives that:

- Address determinants/factors that impact health outcomes
- Develop/support policies that influence health factors and improve health outcomes
  - Examples: Community Health Needs Assessment and Hospital Community Action Plans

# Population Health Task Force Charge

- Improve the health and wellbeing of residents by developing a plan focused on policies and strategies to support healthy communities, active lifestyles and thriving residents by addressing:
  - Social determinants
  - The built environment
  - Systems for change
  - Making the healthy choice the easy choice



# Population Health Task Force Deliverable

## **Produce a strategic plan for a “culture of health”**

Accomplished by:

- Developing a common understanding of how communities impact population health
- Developing a plan to address health disparities, create healthy communities, impact the built environment and make the healthy choice the easy choice
- Recommending a system of outreach to impact all residents



# Why This Can Work

There are existing organizations, initiatives and activities that address aspects of population health:

- Community Health Needs Assessment
- Healthiest Capital County
- Youth Thrive
- YMCA
- Advocates for Health in Action
- United Way
- John Rex Foundation

# Why This Can Work

Models exist to help:

- [Robert Wood Johnson Culture of Health](#)
- [Health in All Policies](#)
- [Live Well San Diego](#)
- [County Health Rankings](#)

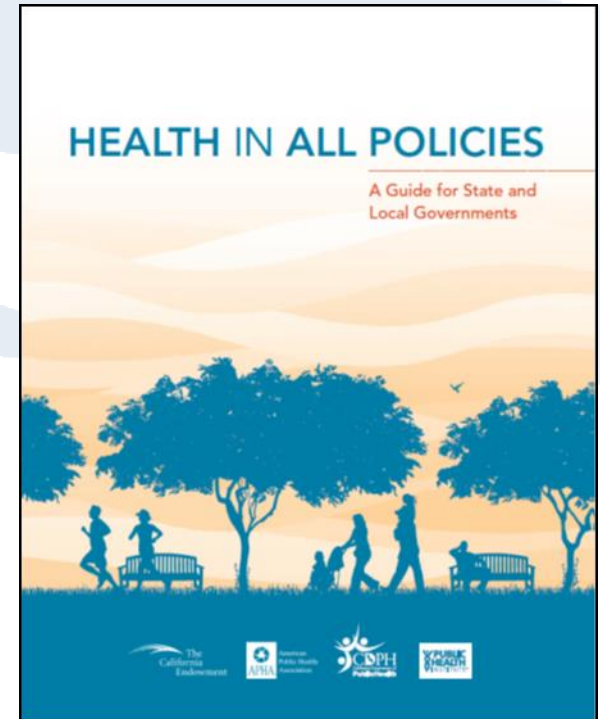


Image: Health I All Policies. [www.phi.org](http://www.phi.org). no date. Public Health Institute. Web. 2/9/17.  
<http://www.phi.org/resources/?resource=hiapgide>.

# Why This Can Work

Outcomes are measurable;  
tools exist to measure them

- County Health Rankings and Roadmaps

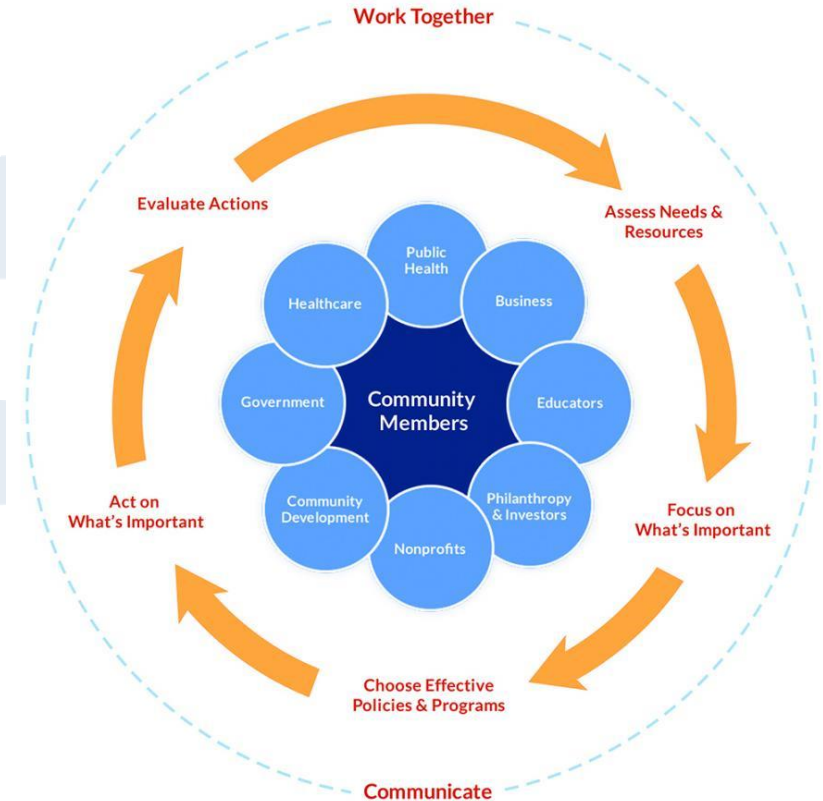


Image: Take Action Cycle. [countyhealthrankings.org](http://www.countyhealthrankings.org). no date. University of Wisconsin Population Health Institute, School of Medicine and Public Health. Web. 2/9/17. <http://www.countyhealthrankings.org/resources/take-action-cycle>

# Population Health Task Force

- Up to 25 Board of Commissioner appointed members
- Diverse members representing:
  - vulnerable communities
  - hospitals
  - foundations
  - social services
  - community funders
  - housing
  - safety net providers
  - healthy communities
  - Human Services
  - business communities
  - geographic areas and others



# Time Line

February 2017

Wake County Board of  
Commissioner approval

February and  
March 2017

Membership appointment  
complete

April 27, 2017

First Task Force meeting

April 30, 2018

Strategic Plan for Board of  
Commissioners complete

# Questions?