



WAKE COUNTY

NORTH CAROLINA

TABLE OF CONTENTS

EXISTING WIC LOCATIONS

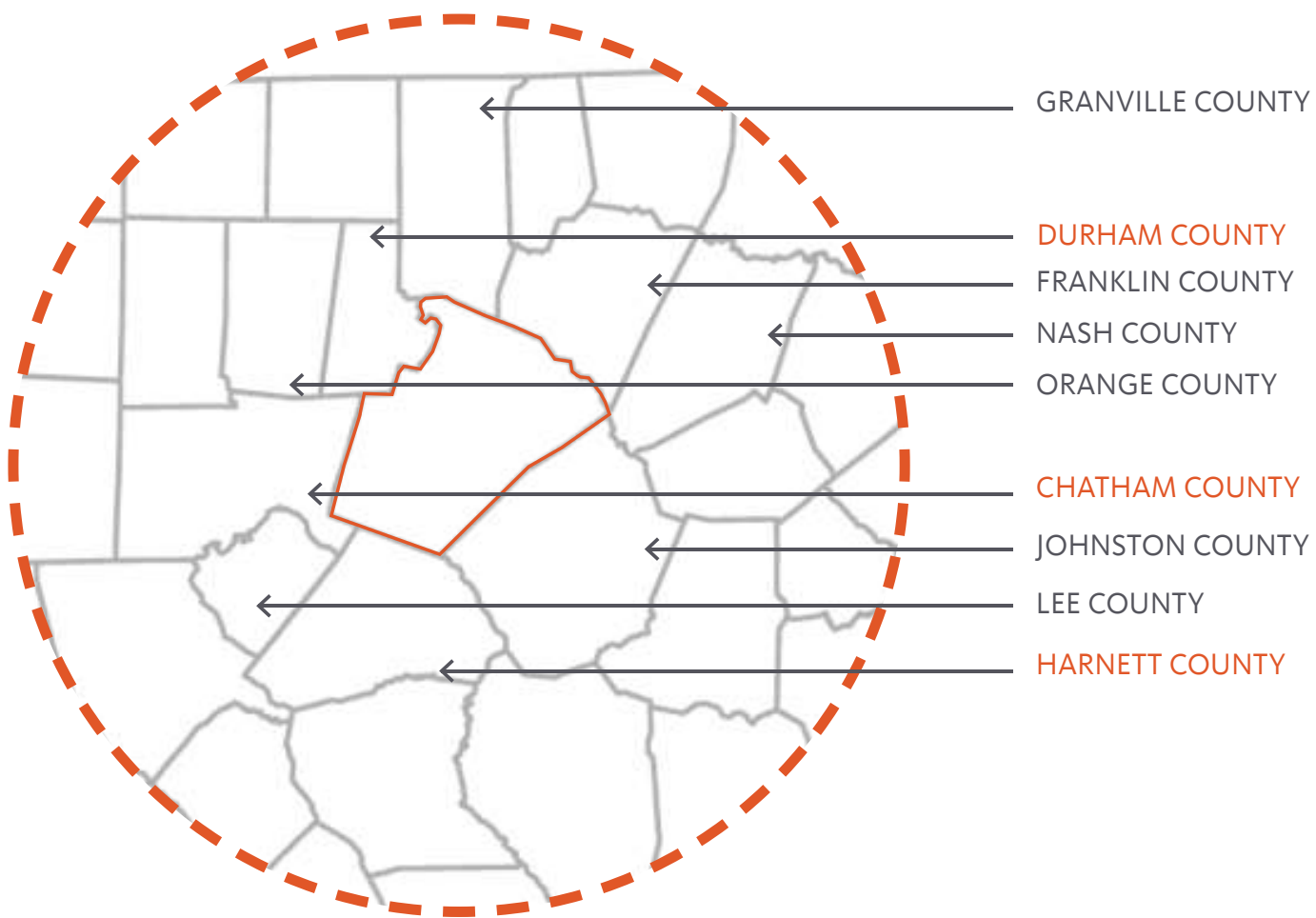
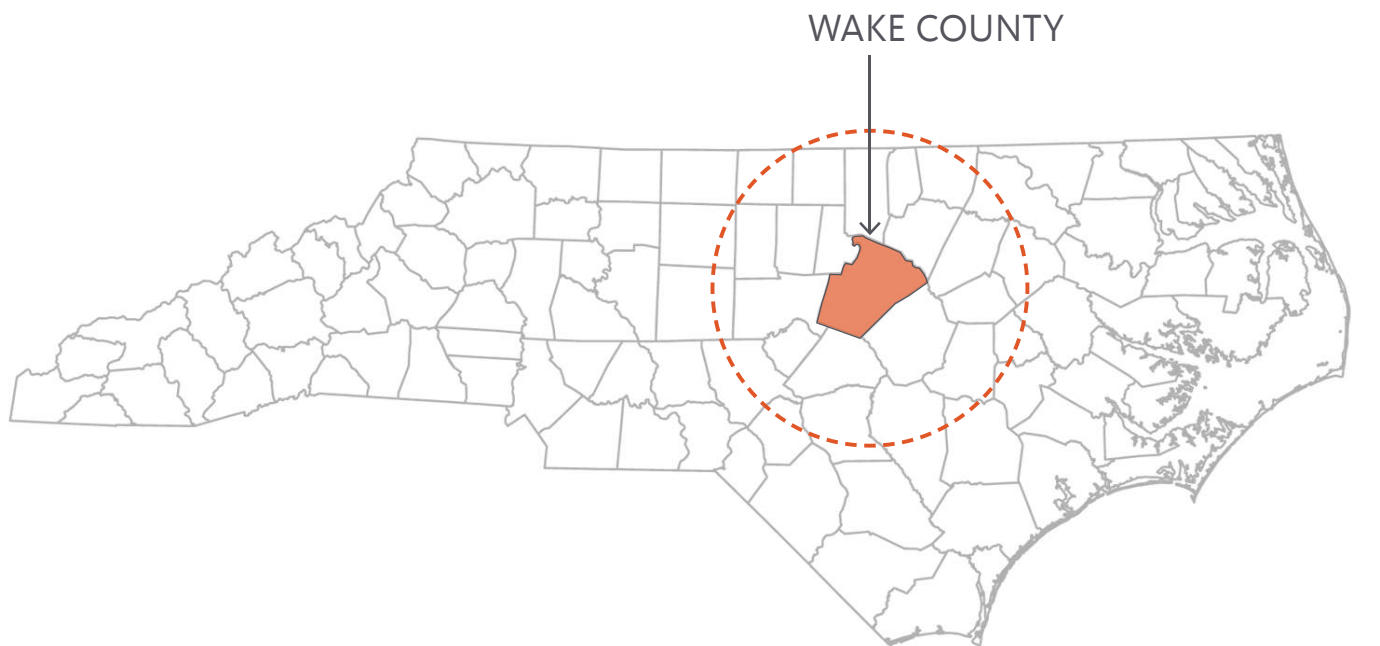
| | |
|---|---|
| WAKE COUNTY & SURROUNDING AREAS | 3 |
| WAKE COUNTY LOCATION MAP | 4 |
| WAKE COUNTY EXISTING FACILITIES MAP | 5 |

EXISTING WIC FACILITIES

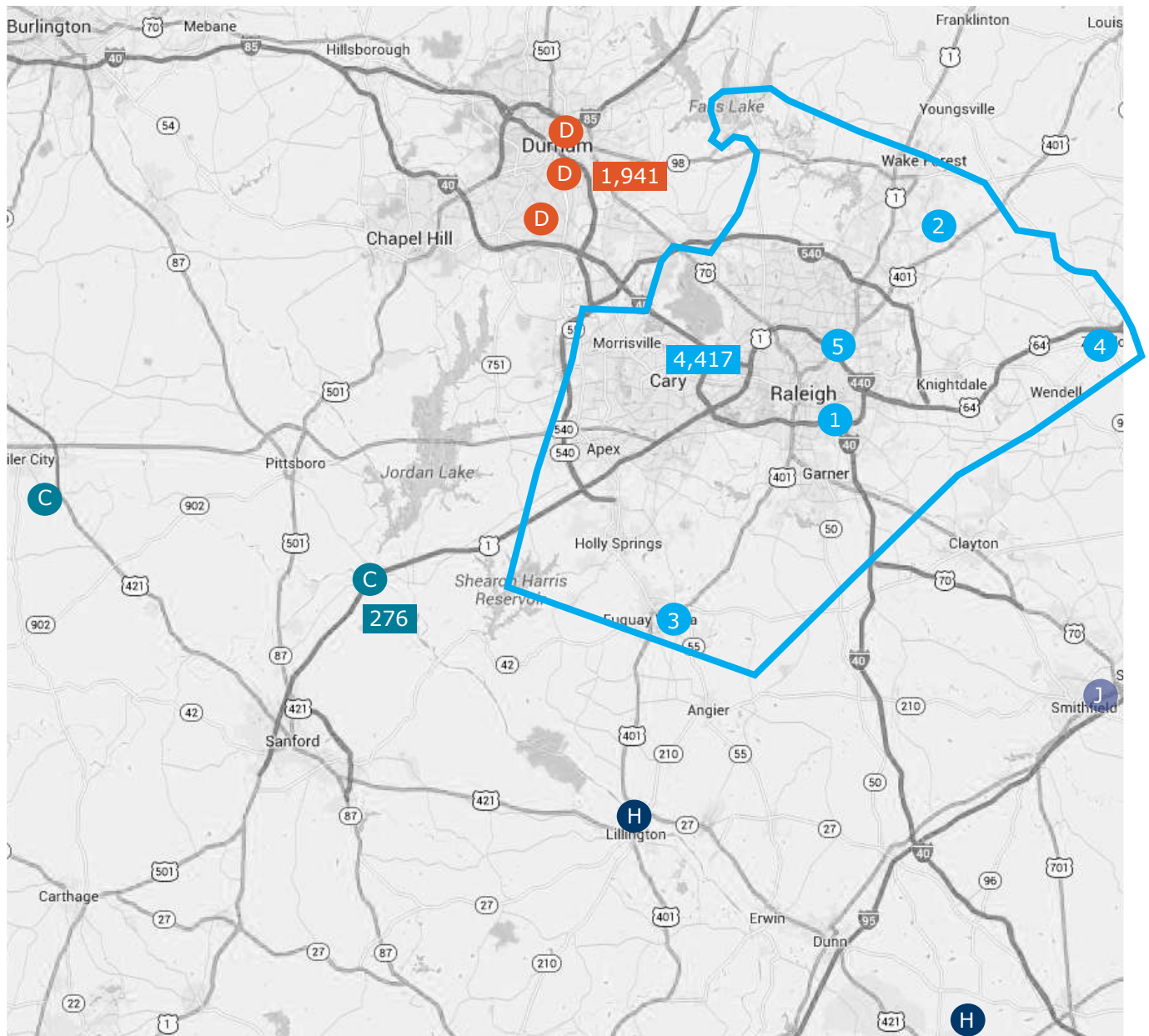
| | |
|--|----|
| FACILITY INFORMATION & CLIENT FLOW | 6 |
| CLIENT FLOW DIAGRAM | 7 |
| NORTHERN REGIONAL STUDY | 8 |
| MILLBROOK STUDY | 9 |
| SUNNYBROOK NEW STUDY | 10 |
| EASTERN REGIONAL STUDY | 11 |
| SOUTHERN REGIONAL STUDY | 12 |

WESTERN REGIONAL

| | |
|--|-------|
| CONCEPTUAL APPROACH | 13 |
| KEY THOUGHTS GRAPHIC | 14 |
| CONCEPTUAL BONDING DIAGRAM | 15 |
| STATE OF NORTH CAROLINA + WIC DATA | 16 |
| WIC STAFFING MATRIX & PARTICIPATION CHART | 17 |
| 2014 WIC CLIENT DENSITY DISTRIBUTION WAKE COUNTY MAP | 18 |
| 2014 WIC CLIENT DENSITY DISTRIBUTION WESTERN WAKE COUNTY MAP | 19 |
| FY2014 WIC PROGRAM | 20 |
| FY2014 FOOD AND NUTRITION SERVICES | 21 |
| FY2014 ADULT MEDICAID PROGRAM | 22 |
| PROGRAM SUMMARY AND PLANNING | 23 |
| PROGRAM SUMMARY | 24 |
| ROOM PROGRAM SHEETS | 25-35 |
| OPTION 1 - 8 STAFF PLAN & OPTION 2 - EXPANSION PLAN | 36 |
| POTENTIAL PROPERTY ANALYSIS | 37 |
| POTENTIAL WESTERN WIC LOCATION | 38-39 |
| RECOMMENDATIONS | 40 |



REGIONAL WIC CENTERS



WAKE COUNTY

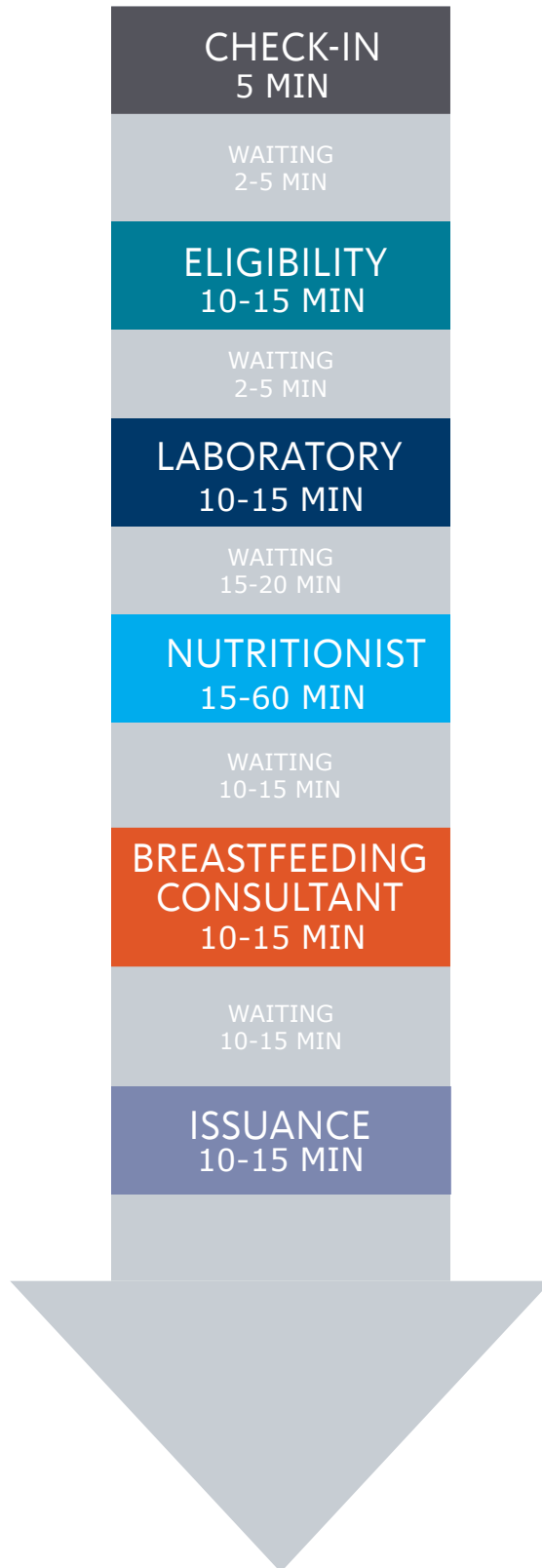
- 1 SUNNYBROOK ROAD
- 2 NORTHERN REGIONAL CENTER
- 3 SOUTHERN REGIONAL CENTER
- 4 EASTERN REGIONAL CENTER
- 5 MILLBROOK

- D DURHAM COUNTY
- C CHATHAM COUNTY
- H HARNETT COUNTY
- J JOHNSTON COUNTY

4,417
1,941
276

Number represents western Wake County existing and future WIC participation

CLIENT FLOW



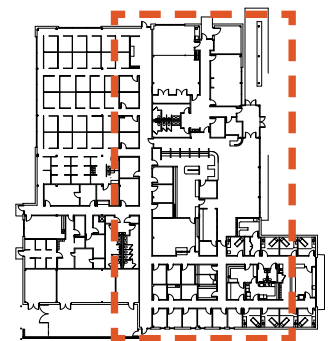
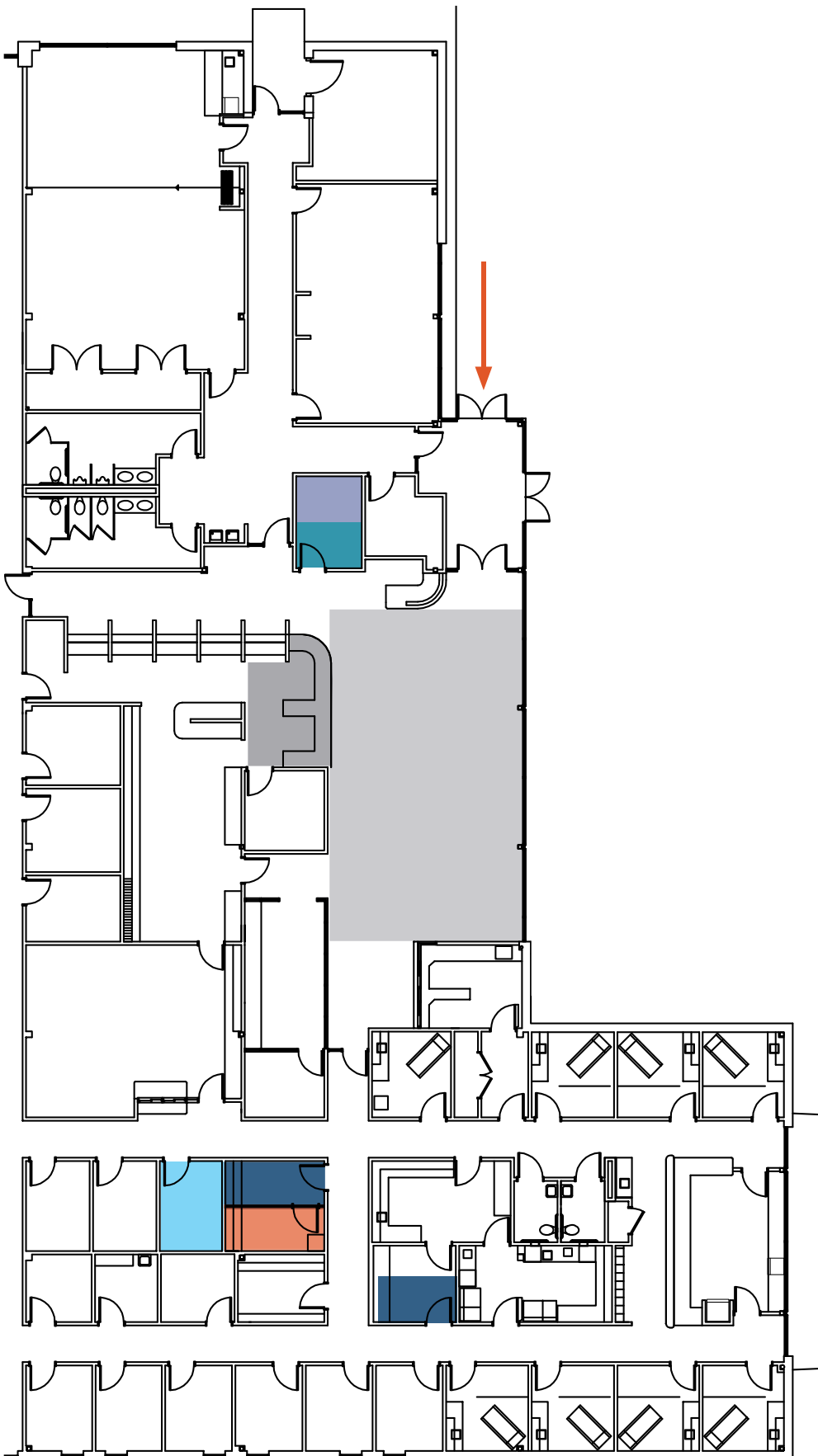
AVERAGE VISIT RANGES FROM 40 - 60 MINUTES

NORTHERN REGIONAL

NUTRITIONIST - 1
VOUCHER COORDINATOR - 1
LAB TECH - 1
BREASTFEEDING TECH - 1

TOTAL FTE'S = 4
AVG. MONTHLY CASELOAD = 940
STAFF TO CLIENT RATIO -
2,820 ANNUAL
235 MONTHLY
8 DAILY

TOTAL WIC SQUARE FEET = **358 ASF**
646 RSF



← ENTRY

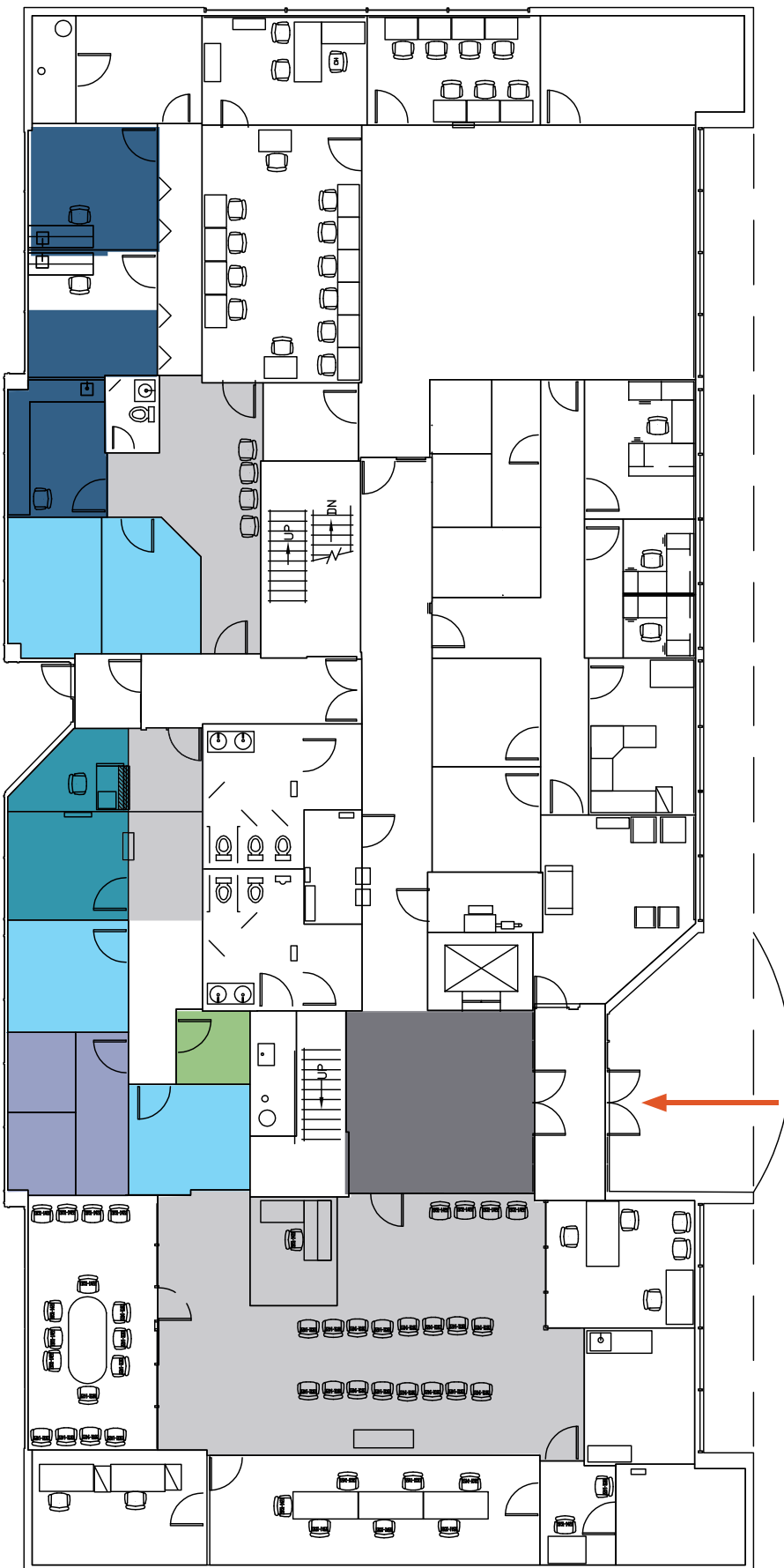
| |
|---------------|
| CHECK-IN |
| WAITING |
| ELIGIBILITY |
| BREASTFEEDING |
| LABORATORY |
| NUTRITIONIST |
| ISSUANCE |

MILLBROOK

NUTRITIONIST - 3
VOUCHER COORDINATOR - 4
LAB TECH - 2
BREASTFEEDING TECH - 1

TOTAL FTE'S = **10**
AVG. MONTHLY CASELOAD = **3,700**
STAFF TO CLIENT RATIO -
4,044 ANNUAL
337 MONTHLY
12 DAILY

TOTAL WIC SQUARE FEET = **1,434 ASF**
1,925 RSF



← ENTRY

CHECK-IN

WAITING

ELIGIBILITY

BREASTFEEDING

LABORATORY

NUTRITIONIST

ISSUANCE

SUPPORT SPACES

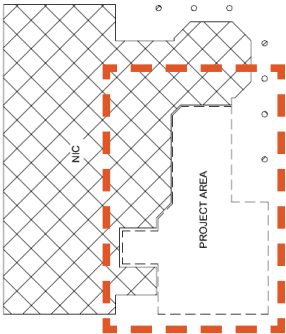
SUNNYBROOK - NEW GROUND FLOOR

NUTRITIONIST - 7
VOUCHER COORDINATOR - 17
LAB TECH - 3
BREASTFEEDING TECH - 5

TOTAL FTE'S = 32
AVG. MONTHLY CASELOAD = 10,000
STAFF TO CLIENT RATIO -
4,440 ANNUAL
370 MONTHLY
15.4 DAILY

TOTAL WIC SQUARE FEET = 4,398 ASF
6,996 RSF

**Sunnybrook 3rd floor administration
space (1,146 ASF/1,780 RSF) not
included in calculations*

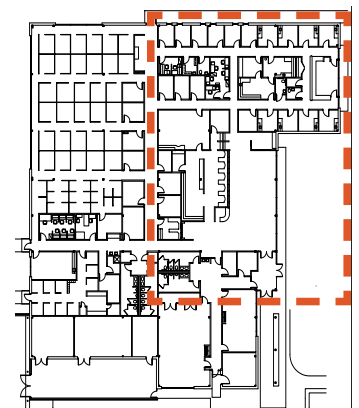
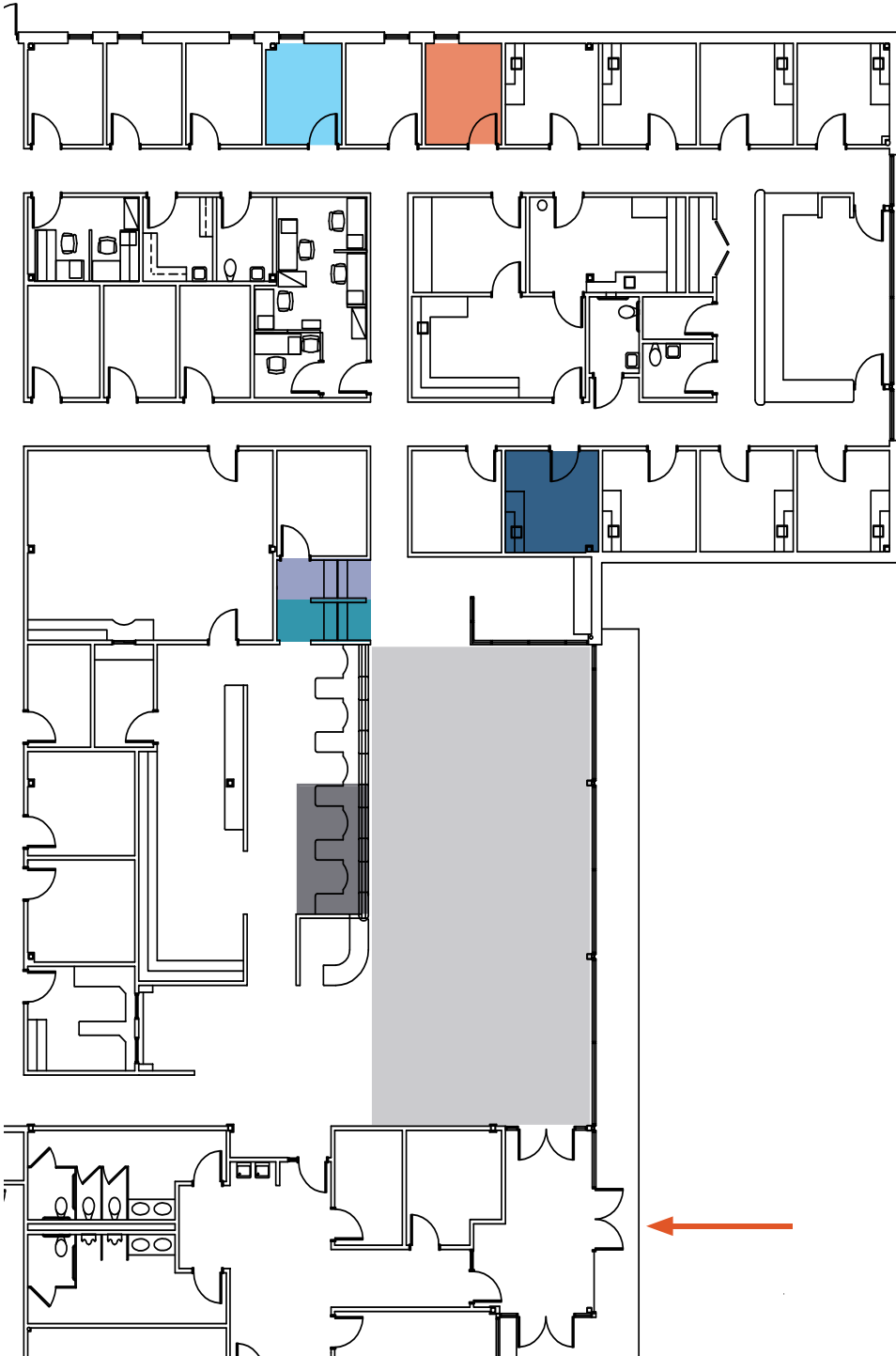


EASTERN REGIONAL

NUTRITIONIST - 1
VOUCHER COORDINATOR - 1
LAB TECH - 1
BREASTFEEDING TECH - 1

TOTAL FTE'S = 4
AVG. MONTHLY CASELOAD = 990
STAFF TO CLIENT RATIO -
2,976 ANNUAL
248 MONTHLY
9 DAILY

TOTAL WIC SQUARE FEET = **312 ASF**
492 RSF



← ENTRY

CHECK-IN

WAITING

ELIGIBILITY

BREASTFEEDING

LABORATORY

NUTRITIONIST

ISSUANCE

SOUTHERN REGIONAL

NUTRITIONIST - 1.3
VOUCHER COORDINATOR - 1
LAB TECH - 1
BREASTFEEDING TECH - 1

TOTAL FTE'S = **4.3**
AVG. MONTHLY CASELOAD = **1,700**
STAFF TO CLIENT RATIO -
4,080 ANNUAL
340 MONTHLY
12 DAILY

TOTAL WIC SQUARE FEET = **382 ASF**
655 RSF



BONDING

STORAGE

CLEANLINESS

FLOW

CROSSROADS

LEARNING

WIDE CORRIDORS

NO CARPET

SECURITY

NATURAL LIGHT

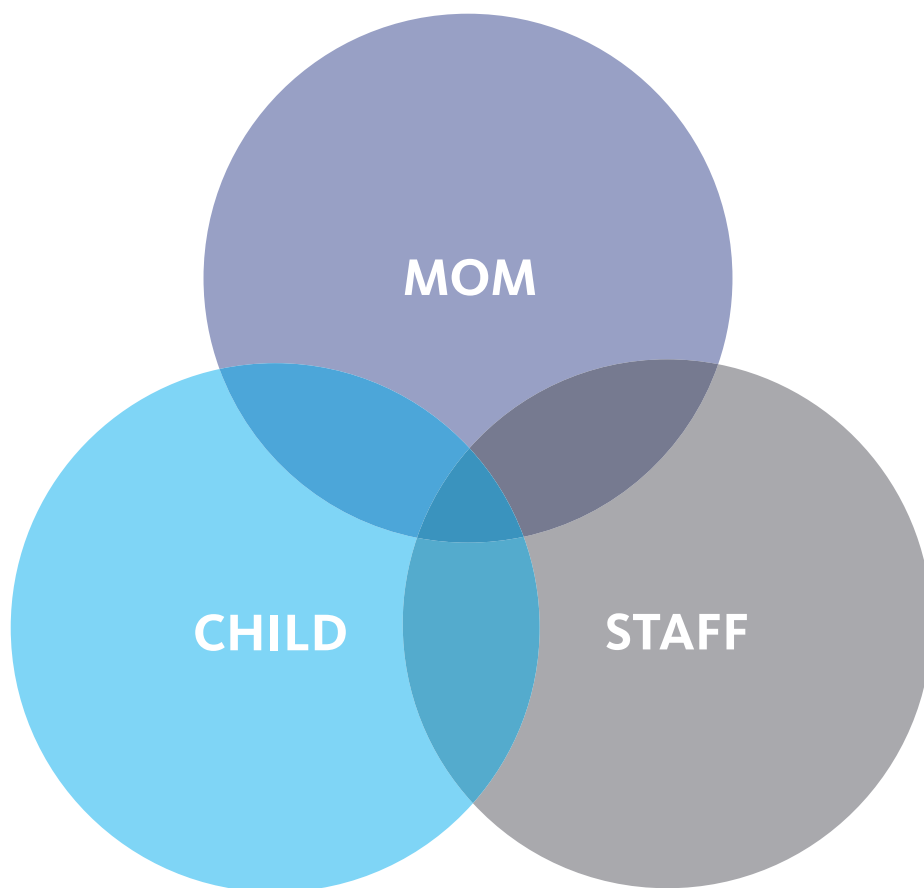
MINIMIZE WAITING

CONFIDENTIALITY

SHAREPOINT

SAFETY

A KEY ELEMENT FOR WESTERN REGIONAL IS TO CREATE A BONDING ENVIRONMENT. THIS IS ESTABLISHED THROUGH A FOCUS ON ***HEALTHY PREGNANCY, HEALTHY DELIVERY, AND HEALTHY CHILD DEVELOPMENT.*** THE BONDING EXPERIENCE IS ENHANCED THROUGH THE KNOWLEDGE AND ASSISTANCE OF THE WIC STAFF THROUGH FOOD VOUCHERS, NUTRITION COUNSELING, AND HEALTHY HABITS COUNSELING.



THE BEST WAY TO ACHIEVE A BONDING RELATIONSHIP STARTS WITH A COMFORTABLE ENVIRONMENT AND FOUR KEY CONCEPTS.

***CREATE MODULAR SPACES
INCREASE NATURAL LIGHT
IMPROVE PATIENT FLOW
ENHANCE WAITING EXPERIENCE***

A. WIC STAFFING MATRIX & PARTICIPATION RATES

Wake County - WIC (Women, Infants, and Children)
Service capacity and staffing matrix

| Location | Actual | | | | | | Proposed Staffing Matrix | | | | | Future Staffing Matrix | | | | |
|-------------------|-----------------------|-------------------|---------------|--|--|--------------------------|--------------------------|-------------------|---------------|--|--------------------------|------------------------|-------------------|---------------|--|--------------------------|
| | # Nutr. FTEs Per Week | Total # WIC Staff | Days Per Week | Productivity Standard Per Nutritionist | Actual Caseload Per Nutritionist Per Month | Total Caseload Per Month | # Nutr. FTEs Per Week | Total # WIC Staff | Days Per Week | Actual Caseload Per Nutritionist Per Month | Total Caseload Per Month | # Nutr. FTEs Per Week | Total # WIC Staff | Days Per Week | Actual Caseload Per Nutritionist Per Month | Total Caseload Per Month |
| Northern Regional | 1.0 | 4.0 | 5 | 1,429 | 940 | 940 | 0.6 | 2.4 | 3 | 903 | 903 | 0.6 | 2.4 | 3 | 903 | 903 |
| Millbrook | 3.0 | 10.0 | 5 | 1,429 | 1,233 | 3,700 | 2.5 | 8.5 | 5 | 1,164 | 2,910 | 2.5 | 8.5 | 5 | 1,164 | 2,910 |
| Sunnybrook New | 7.0 | 32.0 | 5 | 1,429 | 1,429 | 10,000 | 5.5 | 29.5 | 5 | 1,260 | 6,931 | 5.5 | 29.5 | 5 | 1,260 | 6,931 |
| Eastern Regional | 1.0 | 4.0 | 5 | 1,429 | 990 | 990 | 0.6 | 2.4 | 3 | 972 | 972 | 0.6 | 2.4 | 3 | 972 | 972 |
| Southern Regional | 1.3 | 4.3 | 5 | 1,429 | 1,283 | 1,700 | 1.1 | 3.5 | 4 | 1,129 | 1,197 | 1.1 | 3.5 | 4 | 1,129 | 1,197 |
| Western Wake | | | | | | | 3.0 | 8.0 | 5 | 1,472 | 4,417 | 5.0 | 12.0 | 5 | 1,329 | 6,643 |
| TOTAL | 13.3 | 54.3 | | | 1,301 | 17,330 | 13.3 | 54.3 | | 1,307 | 17,330 | 15.3 | 58.3 | | 1,282 | 19,556 |

Proposed Staff Matrix: 8 FTEs target goal to serve existing 4417 of Western Region caseload

- 3 FTEs nutritionist 1.5 FTE from Sunnybrook; .5 FTE from Millbrook; 1.0 FTE from ERC (2 days); from NRC (2 days); from SRC (1 day)
- 1 FTE lab technician 1.0 FTE from 1.0 FTE from ERC (2 days); from NRC (2 days); from SRC (1 day)
- 3 FTE voucher coordinator/receptionist 1.0 FTE from Sunnybrook; 1 FTE from Millbrook; 1.0 FTE from ERC (2 days); from NRC (2 days); from SRC (1 day)
- 1 FTE breastfeeding technician 1.0 FTE from ERC (2 days); from NRC (2 days); from SRC (1 day)

* 5.5 FTEs redistributed from regional sites + 2.5 from Sunnybrook

Future Staffing Matrix: 12 FTEs requires 3.5 additional FTEs to serve 6643 of Western Region caseload

- 5 FTEs nutrition 2.0 FTE from Sunnybrook; 0.5 FTE Millbrook; 1.0 FTE from ERC (2 days); from NRC (2 days); from SRC (1 day); need 1.5 additional FTE
- 2 FTE lab technician 1.0 FTE from ERC (2 days); from NRC (2 days); from SRC (1 day); need 1.0 additional FTE
- 4 FTE voucher coordinator/receptionist 1.0 FTE from Sunnybrook; 1.0 from Millbrook; 1.0 FTE from ERC (2 days); from NRC (2 days); from SRC (1 day); need 1.0 additional FTE
- 1 FTE breastfeeding technician 1.0 FTE from ERC (2 days); from NRC (2 days); from SRC (1 day)

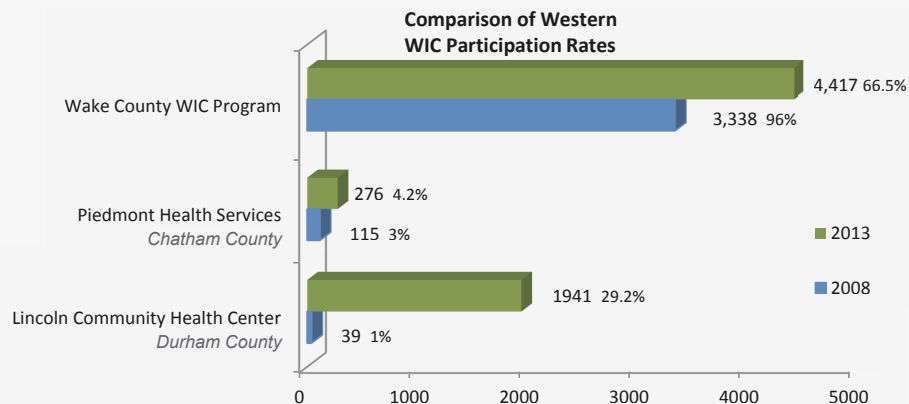
* 5.5 FTEs redistributed from regional sites + 3 FTEs from Sunnybrook - need to ADD 3.5 FTEs (1.0 FTE lab, 1.5 FTEs nutritionist, 1.0 FTE coordinator)

Additional FTEs State funded from projected caseload growth

*Source: Current WIC Certification file as of January 2013; special report provided to Wake County Human Services by Nutrition Services Branch, NC Division of Public Health

**Information represents western Wake County WIC population service locations

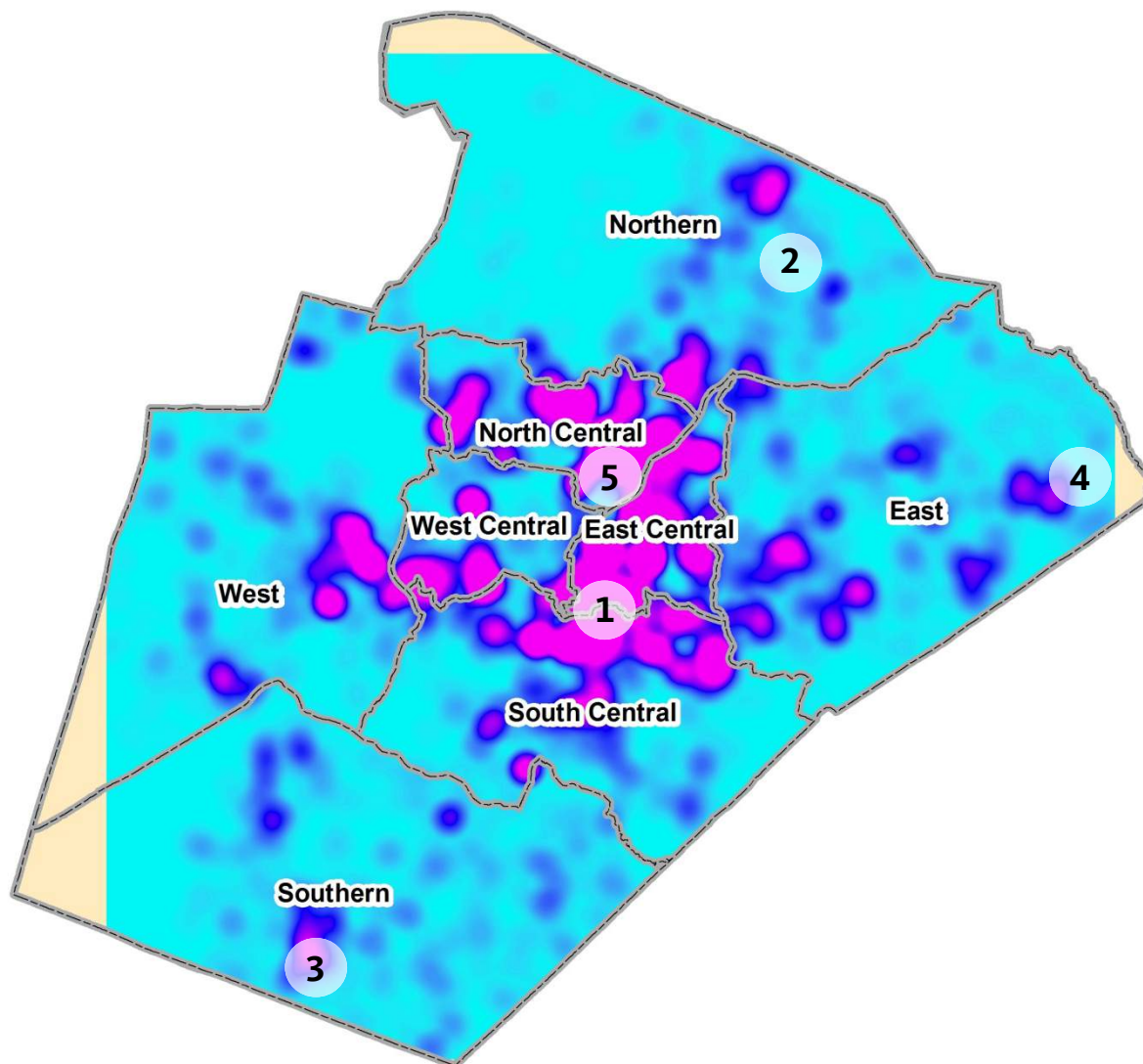
***WCHS future staffing matrix assumes out of county participation returns to Western Wake County.



| | 2008 | 2013 |
|-----------------------------------|--------------|--------------|
| Lincoln Community Health Center | 39 | 1,941 |
| Johnston County Health Department | 2 | 3 |
| Moore County Health Department | 1 | 0 |
| Piedmont Health Services | 115 | 276 |
| Wake County WIC Program | 3,338 | 4,417 |
| | 3,495 | 6,637 |
| Other | | 6 |
| | | 6,643 |

A. 2014 WIC CLIENT DENSITY DISTRIBUTION WAKE COUNTY MAP

Source: State and WIC Data | Nutrition Services Branch, NC Division of Public Health

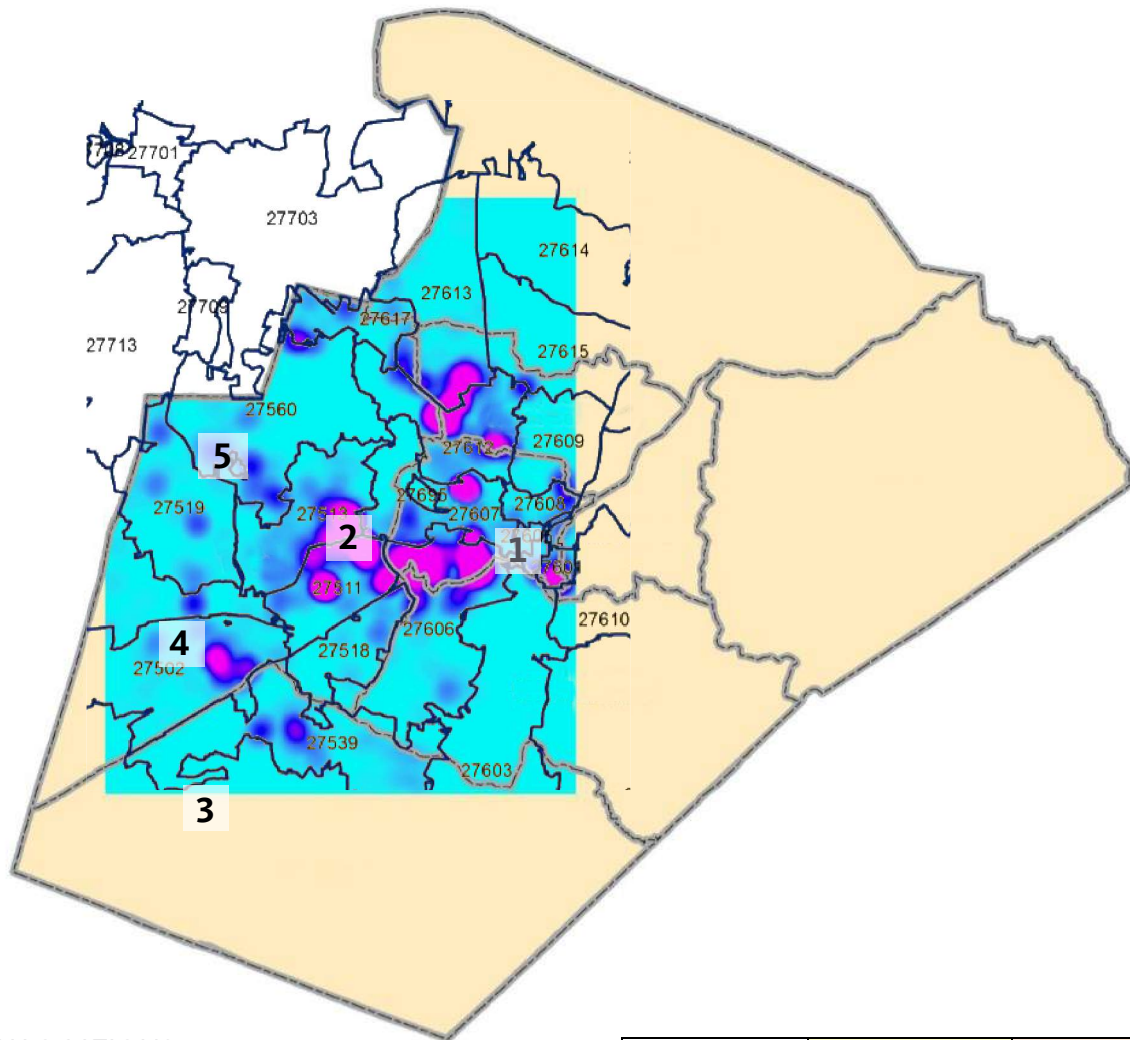


WAKE COUNTY

- ① SUNNYBROOK ROAD
- ② NORTHERN REGIONAL CENTER
- ③ SOUTHERN REGIONAL CENTER
- ④ EASTERN REGIONAL CENTER
- ⑤ MILLBROOK

B. 2014 WIC CLIENT DENSITY DISTRIBUTION WESTERN WAKE COUNTY

Source: State and WIC Data | Nutrition Services Branch, NC Division of Public Health



CITY LOCATIONS

- 1 RALEIGH
- 2 CARY
- 3 HOLLY SPRINGS
- 4 APEX
- 5 MORRISVILLE

| Location | WIC In * | WIC Out ** |
|--------------|---------------|---------------|
| 27502 | 232.0 | 42.0 |
| 27511 | 703.0 | 76.0 |
| 27513 | 395.0 | 28.0 |
| 27518 | 55.0 | 1.0 |
| 27519 | 114.0 | 15.0 |
| 27523 | 26.0 | 18.0 |
| 27539 | 199.0 | 17.0 |
| 27560 | 196.0 | 49.0 |
| 27606 | 1100.0 | 27.0 |
| 27607 | 344.0 | 0.0 |
| 27612 | 534.0 | 3.0 |
| 27613 | 405.0 | 7.0 |
| 27617 | 107.0 | 7.0 |
| 27703 | 7.0 | 1930.0 |
| 27709 | 0.0 | 6.0 |
| TOTAL | 4417.0 | 2226.0 |

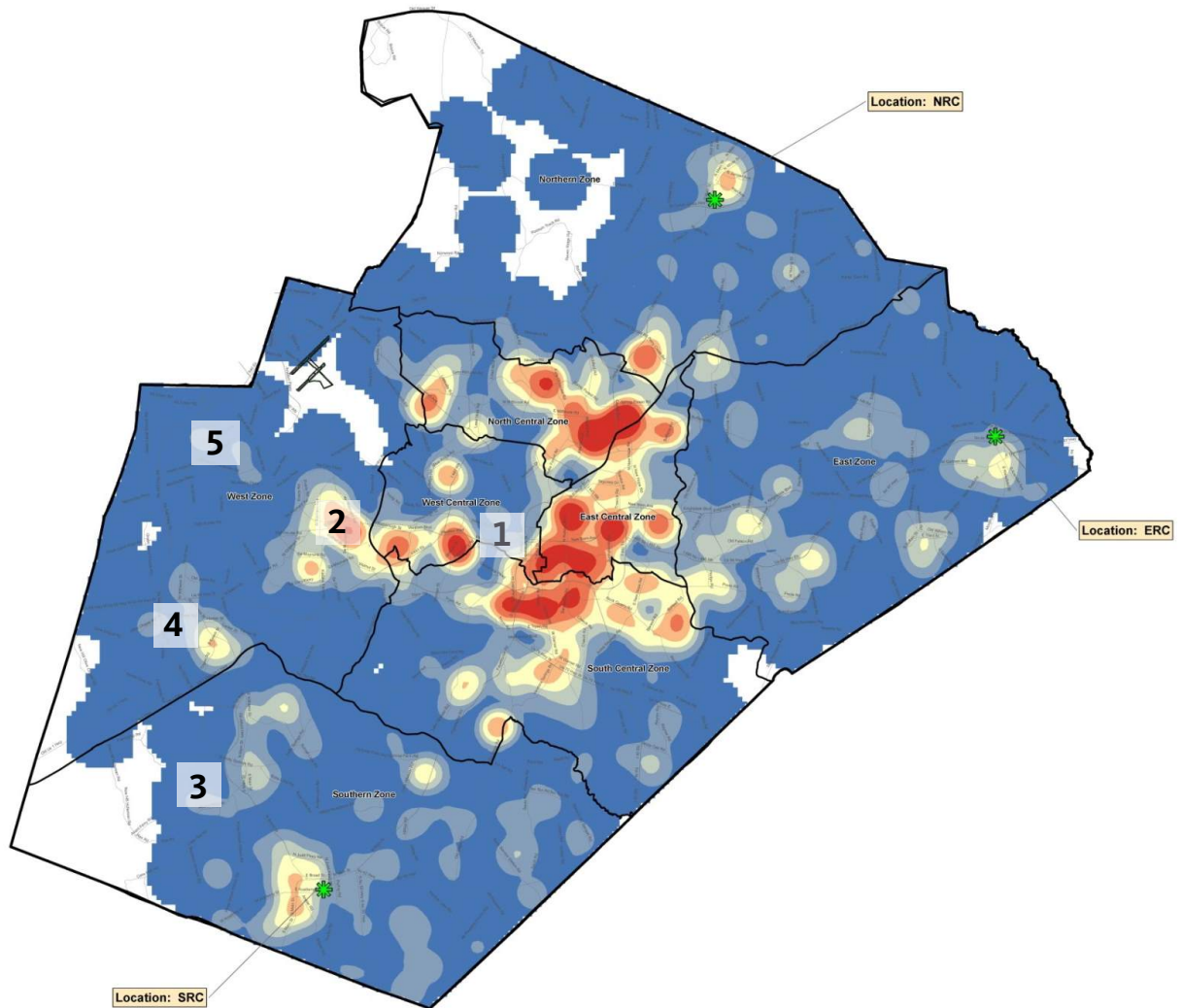
*Wake County WIC Participation

** Out of Wake County WIC Participation

Nutrition Services Branch, NC Division of Public Health Data led WIC staff to conclude that Wake County residents were traveling to Durham and other counties to receive WIC services and was therefore populations that would return to Wake County if WIC in Western Wake was established. State data counted any resident within a zip code that touched any part of Wake County. This heat map with zip overlay proves that the aforementioned populations thought to be Wake County Residents are actually Durham County Residents. Traditional Wake County Human Services collected geo data and heat maps are found to be the most accurate form of counting client information and will be used as the source information in this presentation. See following Slides.

C. FY2014 WIC PROGRAM

Source: Wake County Human Services



CITY LOCATIONS

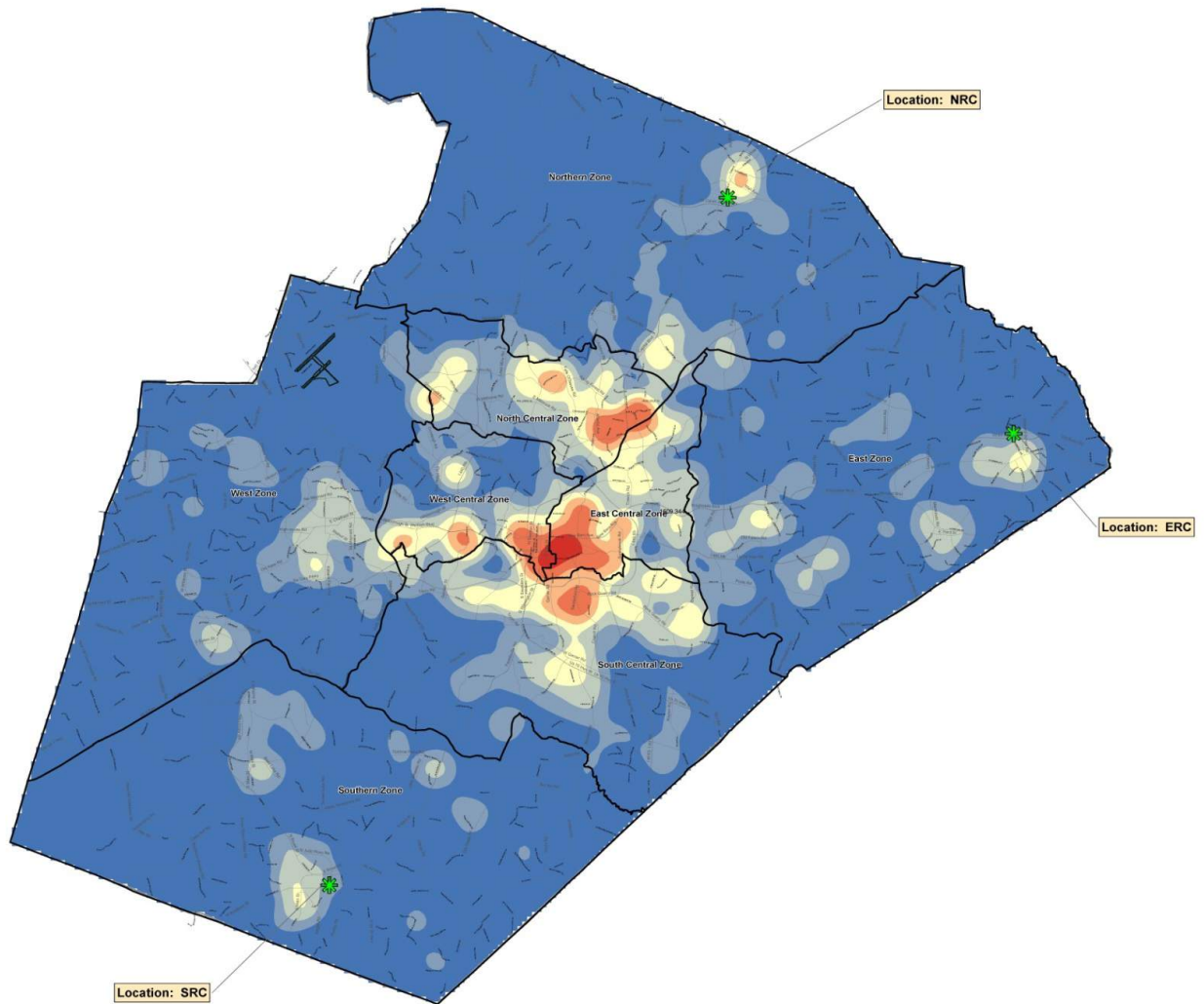
- 1 RALEIGH
- 2 CARY
- 3 HOLLY SPRINGS
- 4 APEX
- 5 MORRISVILLE

| HS Zone | FY14 within Zone |
|---------------|------------------|
| East | 2,588 |
| East Central | 3,878 |
| North Central | 3,487 |
| Northern | 1,535 |
| South Central | 4,825 |
| Southern | 2,494 |
| West | 2,003 |
| West Central | 1,606 |
| Total | 22,416 |

3,609

D. FY2014 FOOD AND NUTRITION SERVICES

Source: Wake County Human Services



CITY LOCATIONS

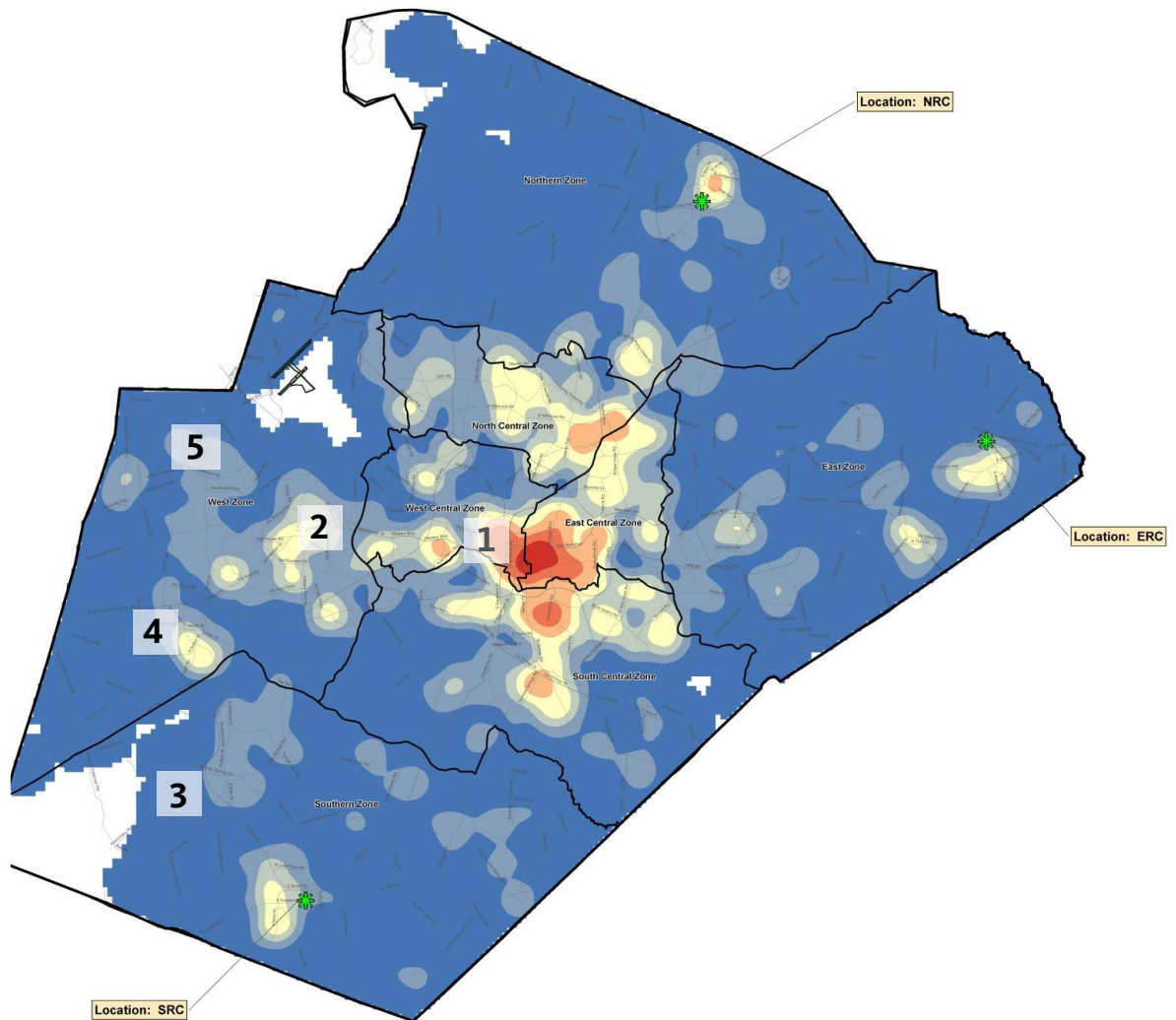
- 1 RALEIGH
- 2 CARY
- 3 HOLLY SPRINGS
- 4 APEX
- 5 MORRISVILLE

| HS Zone | FY14 within Zone |
|---------------|------------------|
| East | 5,162 |
| East Central | 8,114 |
| North Central | 6,732 |
| Northern | 3,910 |
| South Central | 9,237 |
| Southern | 3,913 |
| West | 4,324 |
| West Central | 5,236 |
| Total | 46,628 |

9,560

E. FY2014 ADULT MEDICAID PROGRAM

Source: Wake County Human Services



CITY LOCATIONS

- 1 RALEIGH
- 2 CARY
- 3 HOLLY SPRINGS
- 4 APEX
- 5 MORRISVILLE

| HS Zone | FY14 within Zone |
|---------------|------------------|
| East | 1,801 |
| East Central | 2,761 |
| North Central | 1,921 |
| Northern | 1,590 |
| South Central | 3,105 |
| Southern | 1,674 |
| West | 2,212 |
| West Central | 1,669 |
| Total | 16,733 |

3,609 page 20

9,560 page 21

3,881

17,050 Total

A. PROGRAM SUMMARY BASED ON PROPOSED STAFFING MATRIX

| Wake County - Western Regional WIC (Women, Children, and Infant) | | | | | | | | | |
|--|-------------------|---------------|------------|---------------|------------|----------------|------------|------------|------------|
| Draft Program: 11/02/2015 | | | | | | | | | |
| 2016 | | | | | | | | | |
| Space Type | Requested Program | | | | | | | | |
| Staff Spaces | Staff Qty | Area | | | | Space Notes | | | |
| Registration | 1 | 50 | 50 | SF | | | | | |
| Eligibility | 1 | 120 | 120 | SF | | | | | |
| Laboratory Techs | 1 | 120 | 120 | SF | | | | | |
| Nutritionist | 3 | 120 | 360 | SF | | | | | |
| Voucher Issuance | 1 | 120 | 120 | SF | | | | | |
| Breastfeeding Counselor | 1 | 120 | 120 | SF | | | | | |
| TOTAL | 8 | 890 | SF | | | | | | |
| Group Meeting and Training | Staff Qty | Area | | | | Space Notes | | | |
| Classroom | 1 | 600 | 600 | SF | | 30+ people | | | |
| TOTAL | | 600 | SF | | | | | | |
| Support Spaces | Staff Qty | Area | | | | Space Notes | | | |
| Main Waiting | 1 | 750 | 750 | SF | | 50+ people | | | |
| Sub Waiting | 2 | 225 | 450 | SF | | 15+ people | | | |
| Break Room | 1 | 250 | 250 | SF | | 8 MAX | | | |
| General Storage | 1 | 200 | 200 | SF | | | | | |
| Laboratory Storage | 1 | 150 | 150 | SF | | | | | |
| Copy Room | 1 | 200 | 200 | SF | | | | | |
| TOTAL | | 2,000 | SF | | | | | | |
| Usable Space Subtotal | | 3,490 | ASF | | | | | | |
| Staff Total | 8 | | | | | 436.25 | ASF | | |
| Gross Up Factor (1.4) | | 1,396 | SF | | | | | | |
| Total Building Area | | 4,886 | RSF | | | 611 | ASF | | |
| Existing WIC Facilities | Staff Qty | Area | | | | Area per staff | | | |
| Northern Regional | 4 | 358 | ASF | 646 | RSF | 90 | ASF | 162 | RSF |
| Millbrook | 10 | 1,434 | ASF | 1,925 | RSF | 143 | ASF | 193 | RSF |
| Sunnybrook New | 32 | 4,398 | ASF | 6,996 | RSF | 137 | ASF | 219 | RSF |
| Eastern Regional | 4 | 312 | ASF | 492 | RSF | 78 | ASF | 123 | RSF |
| Southern Regional | 4.3 | 382 | ASF | 655 | RSF | 89 | ASF | 152 | RSF |
| TOTAL | 54.3 | 6,884 | ASF | 10,714 | RSF | 107 | ASF | 170 | RSF |
| Proposed WIC Facilities | Staff Qty | Area | | | | Area per staff | | | |
| Northern Regional | 2.4 | 358 | ASF | 646 | RSF | 149 | ASF | 269 | RSF |
| Millbrook | 8.5 | 1,434 | ASF | 1,925 | RSF | 169 | ASF | 226 | RSF |
| Sunnybrook New | 29.5 | 4,398 | ASF | 6,996 | RSF | 149 | ASF | 237 | RSF |
| Eastern Regional | 2.4 | 312 | ASF | 492 | RSF | 130 | ASF | 205 | RSF |
| Southern Regional | 3.5 | 382 | ASF | 655 | RSF | 109 | ASF | 187 | RSF |
| Western Regional | 8 | 3,490 | ASF | 4,886 | RSF | 436 | ASF | 611 | RSF |
| TOTAL | 54.3 | 10,374 | ASF | 15,600 | RSF | 190 | ASF | 289 | RSF |

***Sunnybrook 3rd floor administration space (1,146 ASF/1,780 RSF) not included in calculations**

Solely locating WIC greatly increases its traditional space use. WIC typically is colocated with other human services and usually takes less than 10% of the building office space.

B. ROOM PROGRAM SHEETS

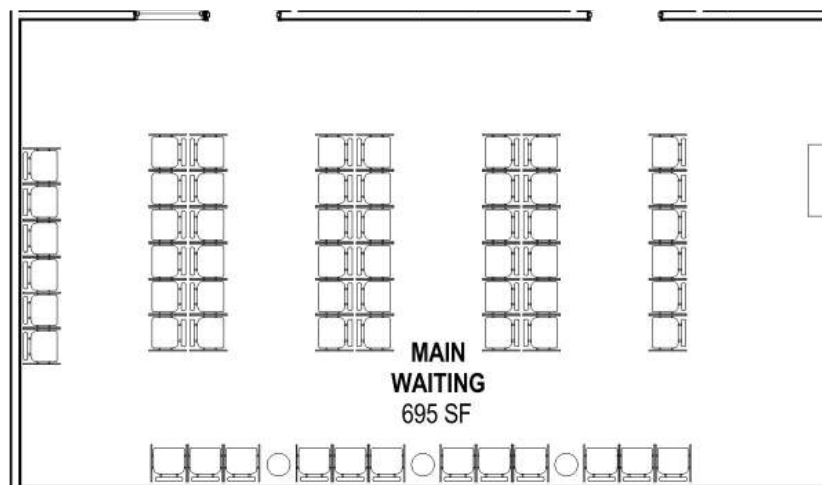
WAKE COUNTY - WOMEN, CHILDREN, AND INFANT - ROOM DATA SHEET

| ROOM | |
|-------------------------|--|
| room name: | Main Waiting |
| room number(s): | |
| unit: | |
| functional description: | Open room near entry for client waiting. |
| occupancy type: | |
| occupancy (persons): | 50+ |
| area (NSF): | |
| quantity of space type: | |

| CHARACTERISTICS | |
|-------------------------|---|
| architectural | |
| character | Open room near entry for client waiting. |
| wall finish | Paint |
| floor finish | Linoleum |
| base | Rubber |
| ceiling finish | GWB |
| doors | 60" double with ADA button |
| environmental | |
| temperature range (°F) | 72°F – 76°F |
| humidity (%) | 55% RH max. |
| daylight | Yes, but not mandatory |
| furniture | |
| seating – fixed | Yes, if possible |
| security | |
| access control | Yes, secured from work areas |
| camera | Yes |
| notes / comments | Open area for clients to wait; possibly include security station in this area (confirm) |

| MAJOR EQUIPMENT | | | | |
|-----------------|-----|----------|-----------------|-------|
| equipment name | no. | location | requirements | notes |
| TV monitors | 1 | | | |
| Vending Machine | 1 | | healthy options | |
| Bulletin Boards | 1 | | Large Size | |

| FURNITURE | | | | |
|----------------|-----|----------|-------------------|----------------------------|
| furniture type | no. | location | requirements | notes |
| Chairs | 50+ | | 24" wide, plastic | armless, fixed if possible |



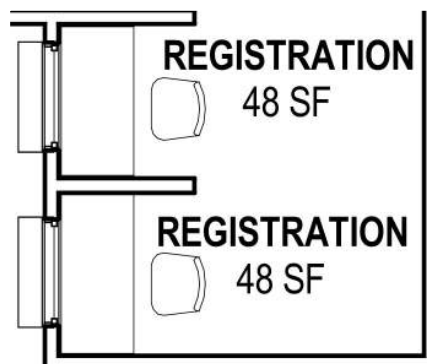
WAKE COUNTY - WOMEN, CHILDREN, AND INFANT - ROOM DATA SHEET

| | |
|---|--|
| ROOM | |
| room name: Registration | occupancy type: |
| room number(s): | occupancy (persons): 2 Employees; 1-4 client (including family) |
| unit: | area (NSF): |
| functional description: Open room near entry for client waiting. | required adjacencies: |

| | |
|------------------------|--|
| CHARACTERISTICS | |
| architectural | technology |
| character | network data |
| wall finish | telephone |
| floor finish | |
| base | electrical lighting |
| ceiling finish | controls |
| doors | |
| environmental | security |
| temperature range (°F) | access control |
| humidity (%) | camera |
| daylight | |
| casework | notes / comments |
| cabinets | Need fixed glass window with deal tray for employee security; roll gate at night for file security |
| countertop | |
| | |
| furniture | |
| seating – moveable | |

| MAJOR EQUIPMENT | | | | |
|-----------------|-----|----------|--------------|-----------------|
| equipment name | no. | location | requirements | notes |
| Computer | 2 | | | 1 per employee |
| Phone | 2 | | | 1 per employee |
| Scanner | 1 | | | employees share |
| Printer | 1 | | | employees share |
| Panic Button | 2 | | | 1 per employee |

| FURNITURE | | | | |
|----------------|-----|----------|-------------------------|------------------------------------|
| furniture type | no. | location | requirements | notes |
| Desk | 2 | | | 1 per employee |
| Chair | 2 | | | 1 per employee |
| File Cabinet | 3 | | locked personal storage | 1 per employee; 1 for state papers |



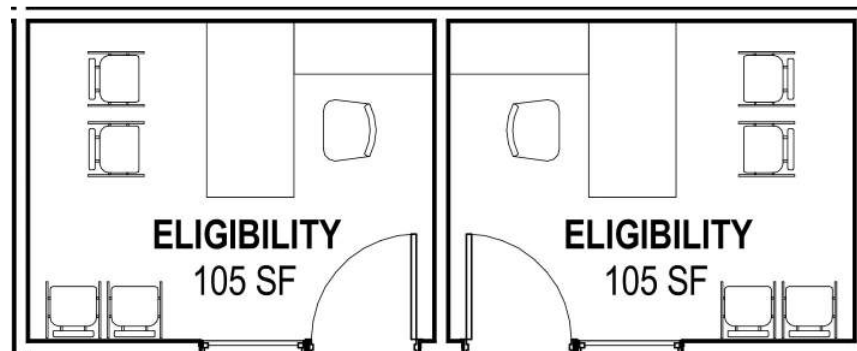
WAKE COUNTY - WOMEN, CHILDREN, AND INFANT - ROOM DATA SHEET

| | |
|--|---|
| ROOM | |
| room name: Eligibility | occupancy type: |
| room number(s): | occupancy (persons): 2 Employees; 1-4 client (including family) |
| unit: | area (NSF): |
| functional description: Enclosed room for private conversation | required adjacencies: |

| | |
|--|--|
| CHARACTERISTICS | |
| architectural | technology |
| character: Enclosed room for document and history review | network data: Yes |
| wall finish: Paint | telephone: Yes |
| floor finish: Linoleum | electrical lighting |
| base: Rubber | controls: Yes |
| ceiling finish: GWB | security |
| doors: 36" single (with or without visible) | camera: Yes |
| environmental | notes / comments |
| temperature range (°F): 72°F – 76°F | Need fixed glass window for employee security; Wake County security standard for interview/office space. |
| humidity (%): 55% RH max. | |
| daylight: Yes, but not mandatory | |
| casework | |
| cabinets: Yes | |
| countertop: Yes | |
| furniture | |
| seating – moveable: Yes | |
| acoustics | |
| separation: Yes | |

| MAJOR EQUIPMENT | | | | |
|-----------------|-----|----------|--------------|-----------------|
| equipment name | no. | location | requirements | notes |
| Computer | 2 | | | 1 per employee |
| Phone | 2 | | | 1 per employee |
| Scanner | 2 | | | 1 per employee |
| Printer | 1 | | | employees share |
| Panic Button | 2 | | | 1 per employee |

| FURNITURE | | | | |
|----------------|-----|----------|-------------------------|------------------------------|
| furniture type | no. | location | requirements | notes |
| Desk | 2 | | | 1 per employee |
| Chair | 6 | | | 1 per employee; 2 per client |
| File Cabinet | 2 | | locked personal storage | 1 per employee |



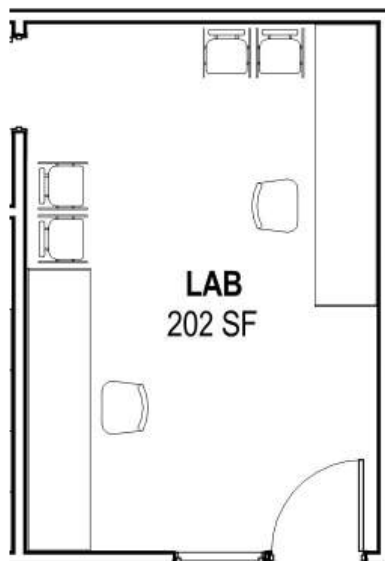
WAKE COUNTY - WOMEN, CHILDREN, AND INFANT - ROOM DATA SHEET

| ROOM | |
|-------------------------|---|
| room name: | Laboratory |
| room number(s): | |
| unit: | |
| functional description: | Enclosed room for data input and physical measuring |
| occupancy type: | |
| occupancy (persons): | 2 Employees; 1-4 client (including family) |
| area (NSF): | |
| required adjacencies: | Laboratory Storage |
| Codes: | No cardboard boxes |

| CHARACTERISTICS | |
|-----------------------------------|--|
| architectural | |
| character | Enclosed room for data input and physical measuring |
| wall finish | Paint |
| floor finish | Linoleum |
| base | Rubber |
| ceiling finish | GWB |
| doors | 36" single (with or without visibility) |
| environmental | |
| temperature range (°F) | 72°F – 76°F |
| humidity (%) | 55% RH max. |
| daylight | Yes, but not mandatory |
| casework | |
| cabinets | Yes; base and upper locked |
| countertop | Yes; corian |
| furniture | |
| seating – moveable | Yes |
| acoustics | |
| separation | Yes |
| technology | |
| network data | Yes |
| telephone | Yes |
| electrical lighting | |
| controls | Yes |
| security | |
| access control | Yes |
| camera | Yes |
| plumbing / fire protection | |
| fixtures | Yes, sink |
| notes / comments | Anthropometric (Height & Weight) Equipment for adult and children; cabinetry to have drawers and adjustable cabinetry below; clear counterspace for blood draw |

| MAJOR EQUIPMENT | | | | |
|-----------------|-----|----------|--------------------|---------------------------------|
| equipment name | no. | location | requirements | notes |
| Computer | 2 | | | 1 per employee |
| Phone | 1 | | | wall mounted |
| Scanner | 2 | | | 1 per employee |
| Printer | 1 | | | employees share |
| Panic Button | 2 | | | 1 per employee at desk area |
| Sharp Container | 1 | | | wall mounted; above child reach |
| Sink | 1 | | double compartment | |

| furniture type | no. | location | requirements | notes |
|-----------------------------------|-----|----------|-------------------------|------------------------------|
| Desk (open knee space at counter) | 2 | | | 1 per employee |
| Chair | 6 | | | 1 per employee; 2 per client |
| File Cabinet | 2 | | locked personal storage | 1 per employee |

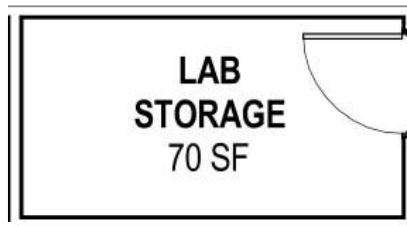


WAKE COUNTY - WOMEN, CHILDREN, AND INFANT - ROOM DATA SHEET

| ROOM | |
|-------------------------|--|
| room name: | Laboratory Storage |
| room number(s): | |
| unit: | |
| functional description: | Enclosed secured room for Laboratory overstock items |
| occupancy type: | |
| occupancy (persons): | 1 Employee |
| area (NSF): | |
| required adjacencies: | Laboratory |
| Codes: | No cardboard boxes |

| CHARACTERISTICS | |
|-----------------------------------|---|
| architectural | |
| character | Enclosed secured room for Laboratory overstock items |
| wall finish | Paint |
| floor finish | Linoleum |
| base | Rubber |
| ceiling finish | GWB |
| doors | 36" single |
| electrical lighting | |
| controls | Yes |
| security | |
| access control | Yes |
| camera | Yes |
| HVAC system | |
| special ventilation | confirm |
| plumbing / fire protection | |
| sprinkler system | Yes |
| environmental | |
| temperature range (°F) | 72°F – 76°F (confirm) |
| humidity (%) | 55% RH max. (confirm) |
| casework | |
| shelving | Yes; adjustable |
| notes / comments | Secured storage accessed only by Laboratory Technicians |

| MAJOR EQUIPMENT | | | | |
|-------------------------|-----|----------|--------------|---|
| equipment name | no. | location | requirements | notes |
| Sharp Container Storage | 1 | | Large Box | secured box; easy to move for disposal crew |
| Lab Coat Storage Box | 1 | | | |
| Cleaning Supplies | | | | |



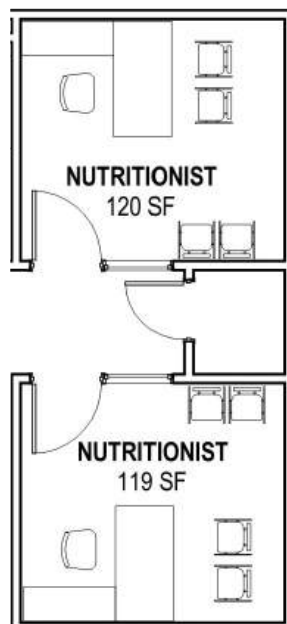
WAKE COUNTY - WOMEN, CHILDREN, AND INFANT - ROOM DATA SHEET

| ROOM | |
|-------------------------|--|
| room name: | Nutritionist |
| room number(s): | |
| unit: | |
| functional description: | Enclosed room for private conversation |
| occupancy type: | |
| occupancy (persons): | 6 Employees; 1-4 client (including family) |
| area (NSF): | |
| required adjacencies: | |
| Codes: | |

| CHARACTERISTICS | |
|-------------------------|--|
| architectural | |
| character | Enclosed room for private conversation |
| wall finish | Paint |
| floor finish | Linoleum |
| base | Rubber |
| ceiling finish | GWB |
| doors | 36" single (with or without visibility) |
| technology | |
| network data | Yes |
| telephone | Yes |
| electrical lighting | |
| controls | Yes |
| security | |
| access control | Yes |
| camera | Yes |
| environmental | |
| temperature range (°F) | 72°F – 76°F |
| humidity (%) | 55% RH max. |
| daylight | Yes, but not mandatory |
| casework | |
| cabinets | Yes |
| countertop | Yes |
| furniture | |
| seating – moveable | Yes |
| acoustics | |
| separation | Yes |
| notes / comments | Need fixed glass window for employee security; Wake County security standard for interview/office space. |

| MAJOR EQUIPMENT | | | | |
|-----------------|-----|----------|--------------|-----------------|
| equipment name | no. | location | requirements | notes |
| Computer | 2 | | | 1 per employee |
| Phone | 2 | | | 1 per employee |
| Scanner | 2 | | | 1 per employee |
| Printer | 1 | | | employees share |
| Panic Button | 2 | | | 1 per employee |

| furniture type | no. | location | requirements | notes |
|----------------|-----|----------|-------------------------|------------------------------|
| Desk | 2 | | | 1 per employee |
| Chair | 18 | | | 1 per employee; 2 per client |
| File Cabinet | 2 | | locked personal storage | 1 per employee |



WAKE COUNTY - WOMEN, CHILDREN, AND INFANT - ROOM DATA SHEET

ROOM

| | | | |
|-------------------------|--|-----------------------|--|
| room name: | Voucher Issuance | occupancy type: | |
| room number(s): | | occupancy (persons): | 2 Employees; 1-4 client (including family) |
| unit: | | area (NSF): | |
| functional description: | Enclosed room for private issuance of vouchers | required adjacencies: | |

CHARACTERISTICS

architectural

| | |
|----------------|---|
| character | Enclosed room for document and history review |
| wall finish | Paint |
| floor finish | Linoleum |
| base | Rubber |
| ceiling finish | GWB |
| doors | 36" single (with or without visibility) |

technology

| | |
|--------------|-----|
| network data | Yes |
| telephone | Yes |

electrical lighting

| | |
|----------|-----|
| controls | Yes |
|----------|-----|

security

| | |
|----------------|--------------------------|
| access control | Yes; night time lockdown |
| camera | Yes |

environmental

| | |
|------------------------|------------------------|
| temperature range (°F) | 72°F – 76°F |
| humidity (%) | 55% RH max. |
| daylight | Yes, but not mandatory |

notes / comments

Need fixed glass window for employee security; Wake County security standard for interview/office space.

casework

| | |
|------------|-----|
| cabinets | Yes |
| countertop | Yes |

furniture

| | |
|--------------------|-----|
| seating – moveable | Yes |
| seating – moveable | Yes |

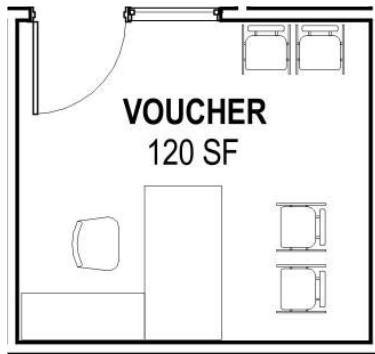
acoustics

| | |
|------------|-----|
| separation | Yes |
|------------|-----|

MAJOR EQUIPMENT

| equipment name | no. | location | requirements | notes |
|---------------------|-----|----------|--|-----------------|
| Computer | 2 | | | 1 per employee |
| Phone | 2 | | | 1 per employee |
| Scanner | 2 | | | 1 per employee |
| Printer | 1 | | | employees share |
| Panic Button | 2 | | | 1 per employee |
| Voucher Printer | 2 | | no badging access during daytime; secured at night | employees share |
| Portable DVD player | 1 | | | employees share |

| furniture type | no. | location | requirements | notes |
|----------------|-----|----------|-------------------------|------------------------------|
| Desk | 2 | | | 1 per employee |
| Chair | 6 | | | 1 per employee; 2 per client |
| File Cabinet | 2 | | locked personal storage | 1 per employee |



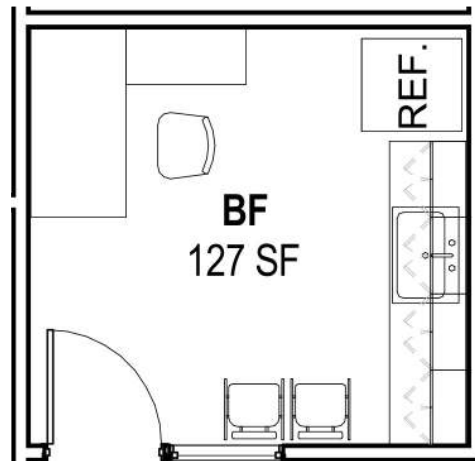
WAKE COUNTY - WOMEN, CHILDREN, AND INFANT - ROOM DATA SHEET

| | |
|---|--|
| ROOM | |
| room name: Breastfeeding Counselor | occupancy type: |
| room number(s): | occupancy (persons): 1 Employee; 23 clients |
| unit: | area (NSF): |
| functional description: Enclosed room for private nursing and lounging | required adjacencies: |

| | |
|--------------------------------------|---|
| CHARACTERISTICS | |
| architectural | technology |
| character | network data |
| Enclosed calm room with sink cabinet | Yes |
| wall finish | Paint |
| floor finish | Linoleum |
| base | Rubber |
| ceiling finish | GWB |
| doors | 36" single |
| environmental | electrical lighting |
| temperature range (°F) | controls |
| 72°F – 76°F | Yes |
| humidity (%) | security |
| 55% RH max. | access control |
| daylight | Yes |
| casework | HVAC system |
| cabinets | controls |
| Yes; base and upper locked | Thermostat, CO2 Sensor |
| countertop | plumbing / fire protection |
| Yes | fixtures |
| furniture | sprinkler system |
| seating – moveable | Yes, sink |
| other | Yes |
| acoustics | notes / comments |
| separation | Need fixed glass window for employee security; Wake County security standard for interview/office space. Changing room area and/or privacy curtain; separate lactation room for employees only. |

| MAJOR EQUIPMENT | | | | |
|------------------------|-----|----------|--------------|----------------|
| equipment name | no. | location | requirements | notes |
| Refrigerator | 1 | | | |
| Computer | 1 | | | 1 per employee |
| Phone | 1 | | | wall mounted |

| FURNITURE | | | | |
|------------------|-----|----------|--------------|------------------------------|
| furniture type | no. | location | requirements | notes |
| Chair | 2 | | | 1 for employee; 1 for client |
| Bariatric Chair | 2 | | | 2 for clients |
| Lounge Chair | 2 | | | 2 for clients |



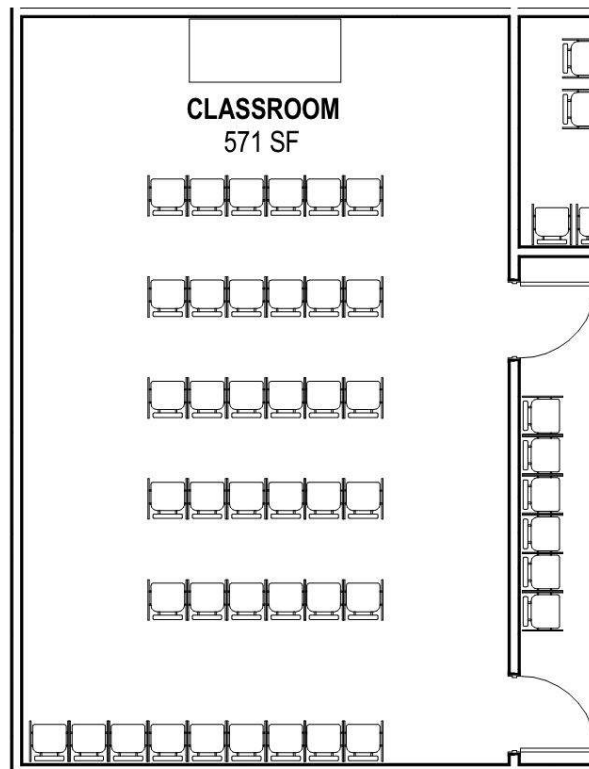
WAKE COUNTY - WOMEN, CHILDREN, AND INFANT - ROOM DATA SHEET

| | |
|---|--|
| ROOM | |
| room name: Classroom | occupancy type: 1 Employee; 20-30 clients |
| room number(s): | occupancy (persons): |
| unit: | area (NSF): |
| functional description: Enclosed room for group learning and discussion. | required adjacencies: |

| | |
|------------------------|----------------------------|
| CHARACTERISTICS | |
| architectural | technology |
| character | "smart room" |
| wall finish | network data |
| floor finish | telephone |
| base | video |
| ceiling finish | projection screen |
| doors | |
| environmental | electrical lighting |
| temperature range (°F) | controls |
| humidity (%) | dimming |
| daylight | |
| casework | security |
| white board | camera |
| furniture | notes / comments |
| seating – moveable | |

| equipment name | no. | location | requirements | notes |
|----------------------|-----|----------|--------------|----------------------------------|
| Projector and Screen | 1 | | | screen surface mounted (confirm) |
| Computer | 1 | | | employee use only |
| White Board | 1 | | Large Size | wall mounted |

| furniture type | no. | location | requirements | notes |
|----------------|-----|----------|--------------|--------------------------------------|
| Chairs | 30+ | | plastic | folding |
| Table | 2 | | folding | one for instructor; one for check-in |



WAKE COUNTY - WOMEN, CHILDREN, AND INFANT - ROOM DATA SHEET

ROOM

| | | | |
|-------------------------|--|-----------------------|---------------------------|
| room name: | Breakroom | occupancy type: | |
| room number(s): | | occupancy (persons): | 1 Employee; 20-30 clients |
| unit: | | area (NSF): | |
| functional description: | Enclosed secure room for employee breaks | required adjacencies: | |

CHARACTERISTICS

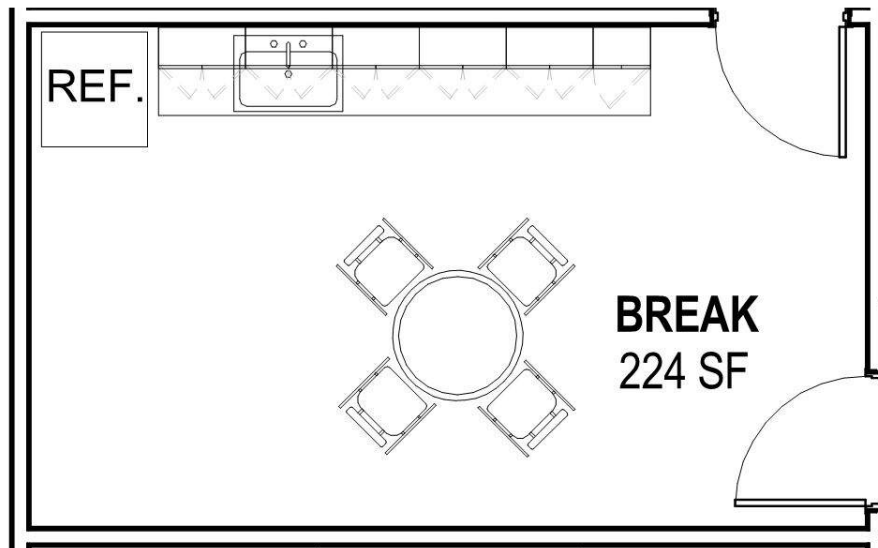
| | | | |
|------------------------|--|-----------------------------------|--|
| architectural | | technology | |
| character | Enclosed secure room for employee breaks | telephone | Yes; if used as meeting room |
| wall finish | Paint | electrical lighting | |
| floor finish | Linoleum | controls | Yes |
| base | Rubber | security | |
| ceiling finish | GWB | access control | Yes |
| doors | 36" single; secured (confirm) | camera | Yes |
| environmental | | plumbing / fire protection | |
| temperature range (°F) | 72°F – 76°F | fixtures | Yes, sink |
| humidity (%) | 55% RH max. | notes / comments | Furniture to allow for flexible arrangement; prefer folding/stacking chairs for easy storage |
| daylight | Yes, but not mandatory | | |
| casework | | | |
| cabinets | Yes | | |
| countertop | Yes | | |
| furniture | | | |
| seating – moveable | Yes | | |

MAJOR EQUIPMENT

| equipment name | no. | location | requirements | notes |
|----------------|-----|----------|--------------------|-------|
| Sink | 1 | | double compartment | |
| Coffee Maker | 1 | | | |

FURNITURE

| furniture type | no. | location | requirements | notes |
|----------------|-----|----------|--------------|-----------------|
| Chairs | 8 | | plastic | dining, folding |
| Table | 2 | | | folding |



WAKE COUNTY - WOMEN, CHILDREN, AND INFANT - ROOM DATA SHEET

ROOM

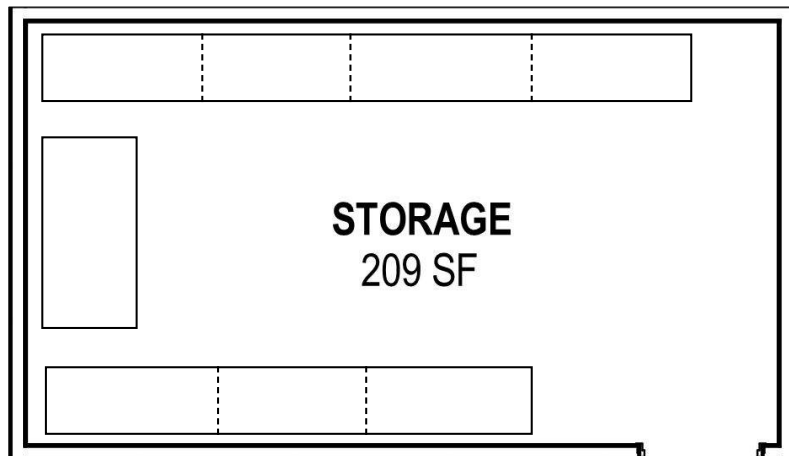
| | | | |
|-------------------------|--|-----------------------|---|
| room name: | <input type="text" value="Storage"/> | occupancy type: | <input type="text"/> |
| room number(s): | <input type="text"/> | occupancy (persons): | <input type="text" value="1 Employee"/> |
| unit: | <input type="text"/> | area (NSF): | <input type="text"/> |
| functional description: | <input type="text" value="Enclosed secured room for general storage"/> | required adjacencies: | <input type="text"/> |

CHARACTERISTICS

| | | | |
|------------------------|--|---|---|
| architectural | | electrical lighting | |
| character | <input type="text" value="Enclosed secured room for general storage"/> | controls | <input type="text" value="Yes"/> |
| wall finish | <input type="text" value="Paint"/> | security | |
| floor finish | <input type="text" value="Linoleum"/> | access control | <input type="text" value="Yes; night time lockdown"/> |
| base | <input type="text" value="Rubber"/> | camera | <input type="text" value="Yes"/> |
| ceiling finish | <input type="text" value="GWB"/> | plumbing / fire protection | |
| doors | <input (confirm)"="" secured="" single;="" type="text" value="36"/> | sprinkler system | <input type="text" value="Yes"/> |
| environmental | | notes / comments | |
| temperature range (°F) | <input type="text" value="72°F – 76°F (confirm)"/> | <div style="border: 1px solid black; height: 150px;"></div> | |
| humidity (%) | <input type="text" value="55% RH max. (confirm)"/> | | |
| casework | | | |
| cabinets | <input type="text" value="No"/> | | |
| countertop | <input type="text" value="No"/> | | |
| shelving | <input type="text" value="Yes"/> | | |
| white board | <input type="text" value="No"/> | | |

STORAGE ITEMS

| equipment name | no. | location | requirements | notes |
|-----------------------|-----|----------|--------------|--------------------------|
| General storage boxes | | | Small Boxes | secured area for storage |
| Food Instrument | | | | vouchers |
| Cash Value | | | | vouchers |
| Formula Storage | | | | |



C. OPTION 1 - 8 STAFF

3,372 TOTAL SQ FT



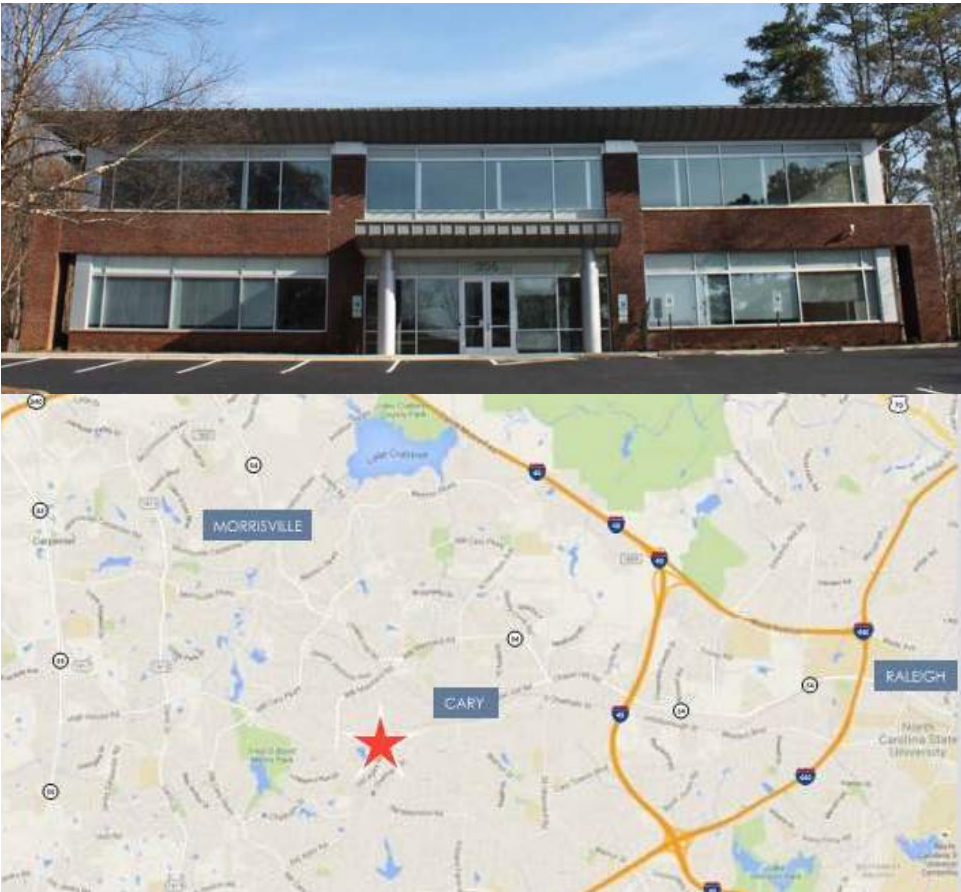
D. OPTION 2 - EXPANSION

4,428 TOTAL SQ FT



POTENTIAL WESTERN WIC LOCATION

206 HIGH HOUSE ROAD, CARY, NC 27513



LOCATION
BETWEEN DOWNTOWN
CARY AND PRESTON
CORNERS

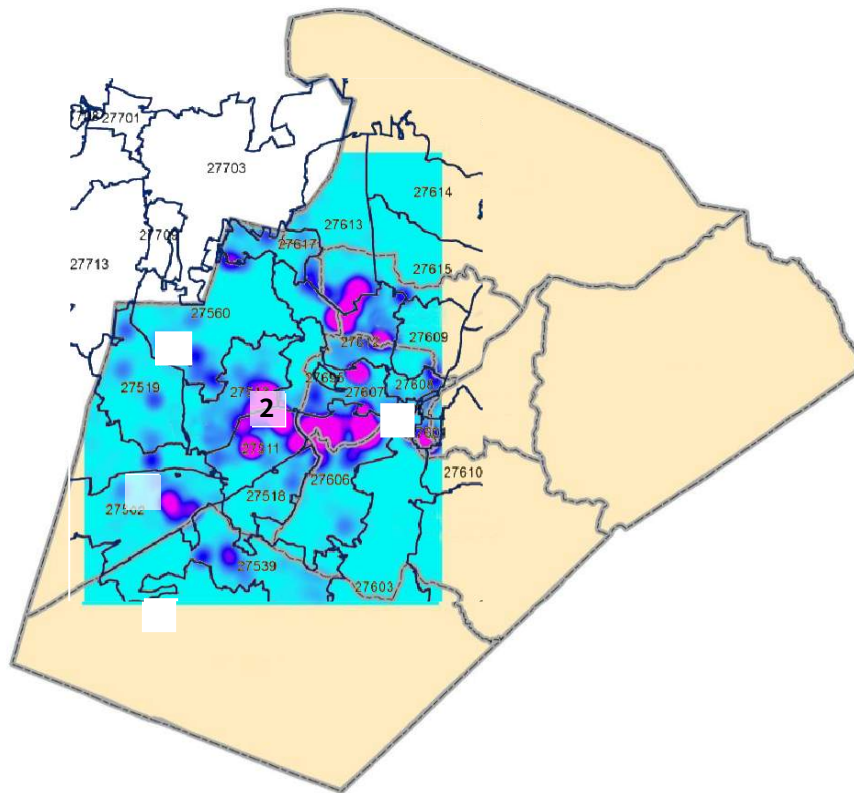
BUILDING SF
+/- 27,500 SF

 SITE LOCATION



POTENTIAL WESTERN WIC LOCATION

206 HIGH HOUSE ROAD, CARY, NC 27513



LEASE RATE

\$19.50 PSF / FULL SERVICE

TENANT IMPROVEMENT ALLOWANCE

\$25,000 / 5,000 SF

TENANT C - POTENTIAL WIC

4,689 SF

ONE-TIME CAPITAL COSTS

\$100,000 FFE & FIT-UP

\$20,000 IT

\$20,000 SECURITY

RE-OCCURRING COSTS

\$100,000 LEASE - TENANT C

TOTAL START-UP COSTS

\$240,000

