

© 2012 CDM SMITH. ALL RIGHTS RESERVED. REUSE OF DOCUMENTS: THESE DOCUMENTS AND DESIGNS PROVIDED BY PROFESSIONAL SERVICE, INCORPORATED HEREIN, ARE THE PROPERTY OF CDM SMITH AND ARE NOT TO BE USED, IN WHOLE OR PART, FOR ANY OTHER PROJECT WITHOUT THE WRITTEN AUTHORIZATION OF CDM SMITH.

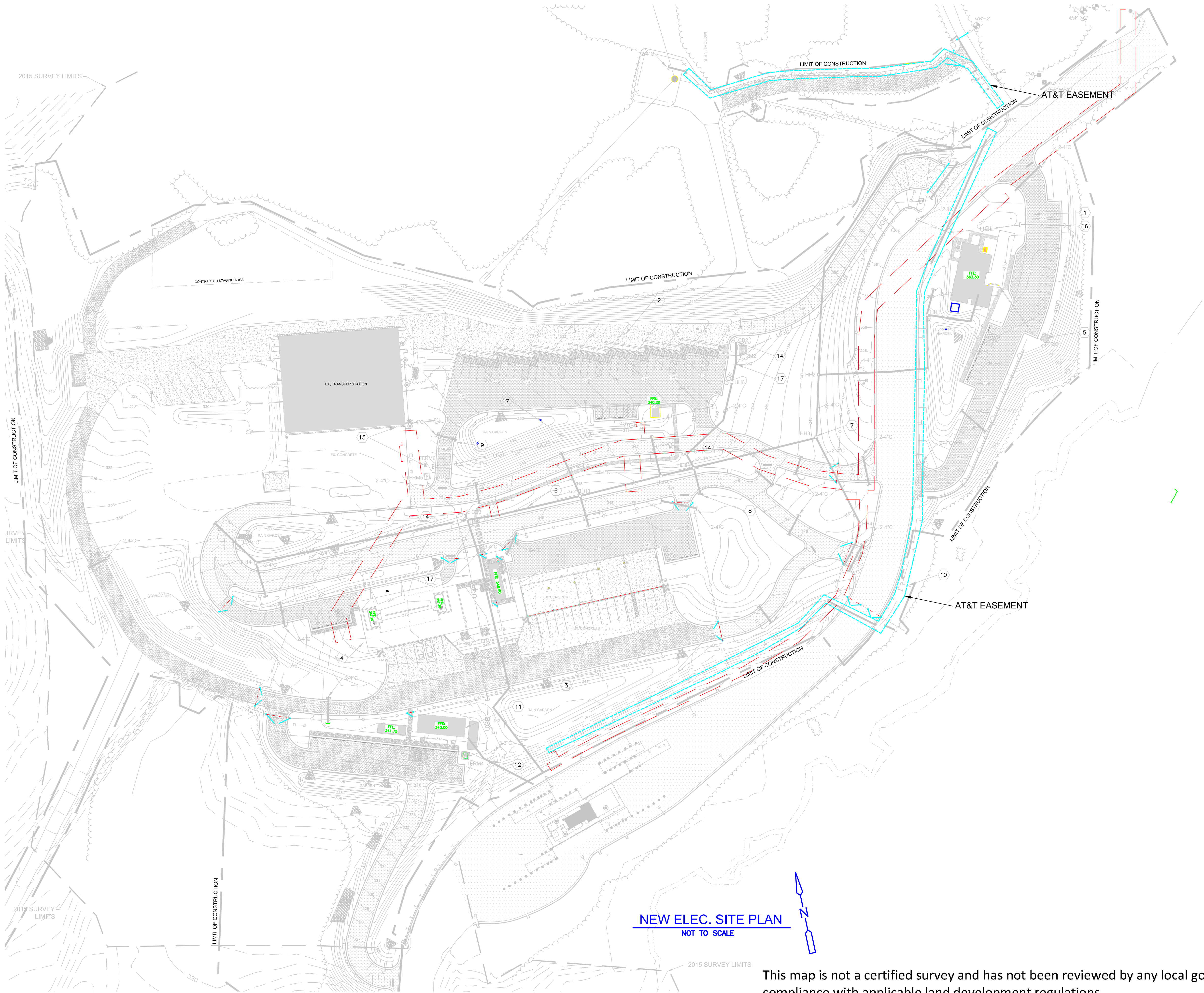


EXHIBIT "A"

SITE LEGEND

- PROGRESS/DUKE ENERGY SITE LUMINAIRE AND POLE
- SLEEVES FOR LOW-VOLTAGE SERVICES
- CONCRETE ENCASED D/B FOR LOW VOLTAGE SERVICES
- PVC SLEEVES FOR PROGRESS/DUKE USE
- PROGRESS/DUKE ENERGY UG PRIMARY WIRING
- AT&T UG WIRING (NEW)
- AT&T UG WIRING (EXIST)
- HH3 HANDHOLE PER DETAILS
- CB3 POLE MOUNTED CAMERA
- WATER LINE EASEMENT
- 10 FT AT&T EASEMENT

REV. NO.	DATE	DRWN	CHKD	REMARKS

DESIGNED BY:	RDA
DRAWN BY:	RDA
SHEET CHK'D BY:	RDA
CROSS CHK'D BY:	RDA
APPROVED BY:	RDA
DATE:	NOVEMBER 2016

**CDM Smith**  
CDM Smith Inc.  
5400 Glenwood Avenue, Suite 400  
Raleigh, NC 27612 | Tel: (919) 325-3500  
NC License No. F-1255

**Sigma**  
Solutions  
Sigma Engineering Solutions, PC  
2100 Gateway Centre Blvd  
Suite 100  
Morrisville, NC 27560  
Ph: 919.840.9300  
Fx: 919.840.9800  
www.sigmasolutions.com  
Sigma Project #: 15033  
NC ENG LIC# C-2490

WAKE COUNTY FACILITIES DESIGN AND CONSTRUCTION  
WAKE COUNTY, NC  
SOUTH WAKE LANDFILL  
NORTHEAST DISTRICT IMPROVEMENTS PROJECT

EXHIBIT "A"-AT&T EASEMENT

PROJECT NO. 6172-110547 FILE NAME: E-DRAW-E003.DWG
SHEET NO. E003