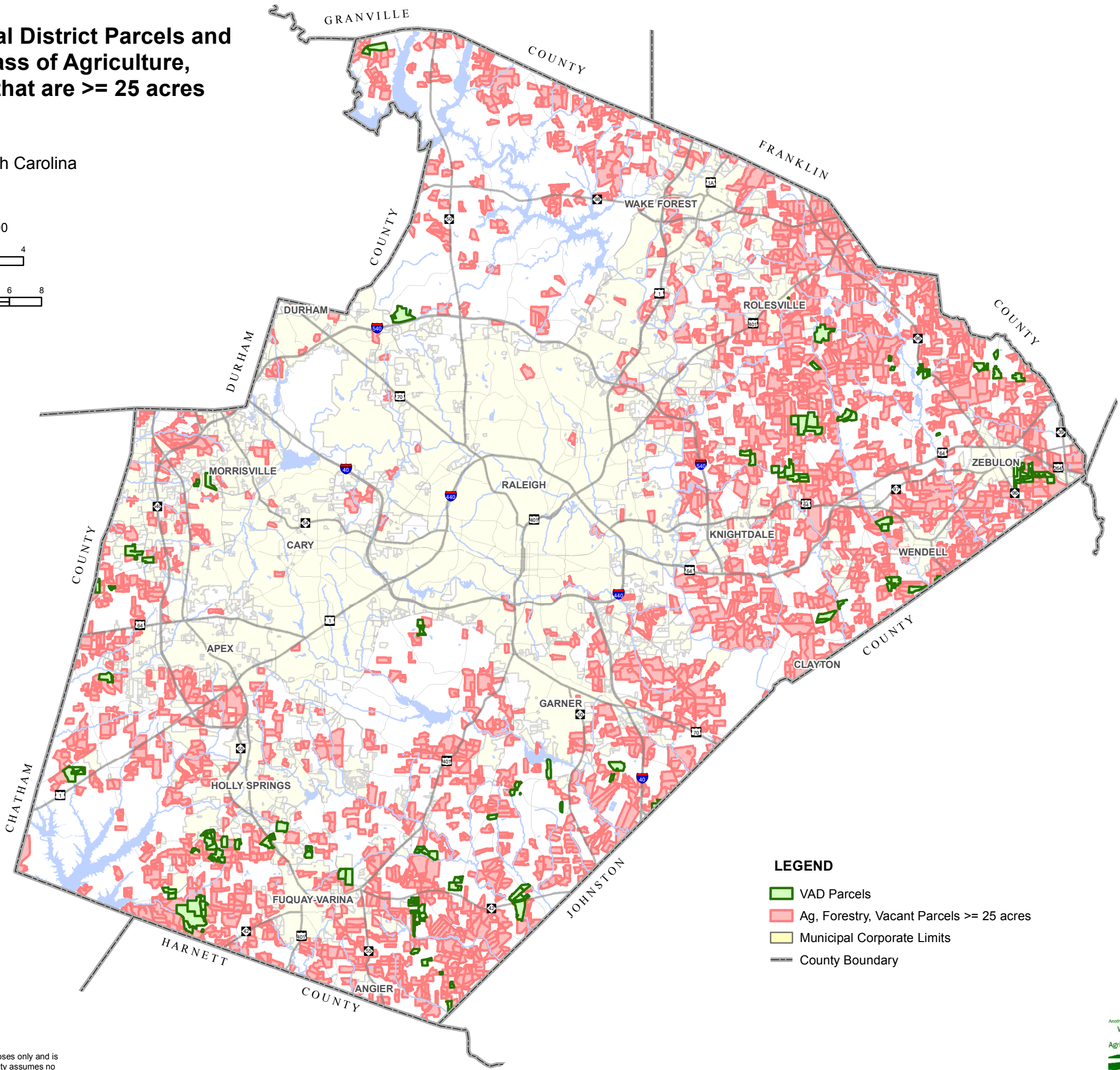
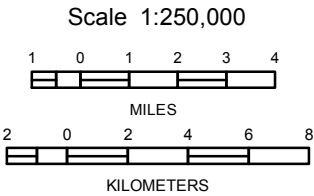


Voluntary Agrictultural District Parcels and  
Parcels with Land Class of Agriculture,  
Forestry and Vacant that are >= 25 acres

Wake County, North Carolina  
April 2015



- LEGEND**
- VAD Parcels
  - Ag, Forestry, Vacant Parcels >= 25 acres
  - Municipal Corporate Limits
  - County Boundary

TABLE 1		
CITY	PARCELS (NO.)	AREA (ACRES)
ANGIER	1	79.8
APEX	24	1418.2
CARY	26	998.7
DURHAM	1	29.7
FUQUAY	19	879.9
GARNER	14	653.0
HOLLY SPRINGS	27	1551.2
KNIGHTDALE	8	430.4
MORRISVILLE	4	165.3
RALEIGH	31	1774.6
ROLESVILLE	7	300.9
WAKE FOREST	15	574.2
WENDELL	5	224.8
ZEBULON	3	335.5
NONE*	1845	104829.4
TOTAL	2030	114245.6

\*Parcels located outside of municipal corporate limits.

**Table 1.** The number and total acreage of parcels in Wake County municipalities with a land class of AGRICULTURE (F, Z), FORESTRY (Y) and VACANT(V) that are greater than or equal to 25 acres in size.

TABLE 2		
CITY	PARCELS (NO.)	AREA (ACRES)
CARY	4	167.7
ROLESVILLE	1	0.8
NONE*	130	5863.6
TOTAL	135	6032.1

\*Parcels located outside of municipal corporate limits.

**Table 2.** The number and total acreage of parcels in Wake County municipalities that are part of the Wake County Voluntary Agricultural District program.

Information depicted hereon is for reference purposes only and is derived from best available sources. Wake County assumes no responsibility for errors arising from misuse of this map.