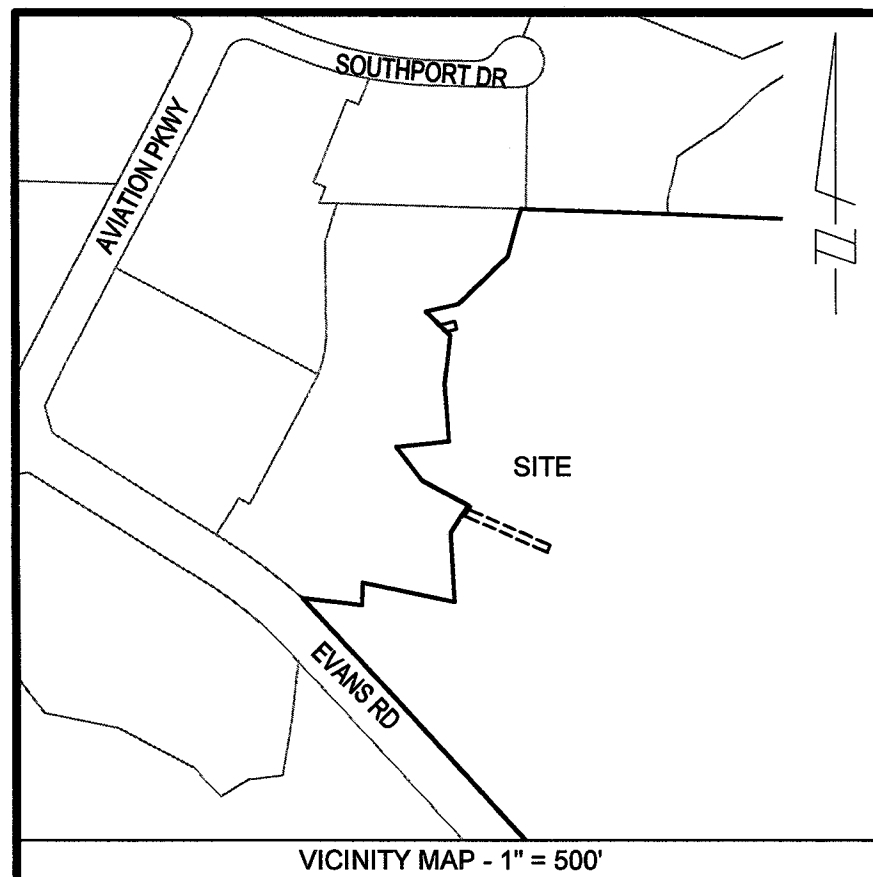
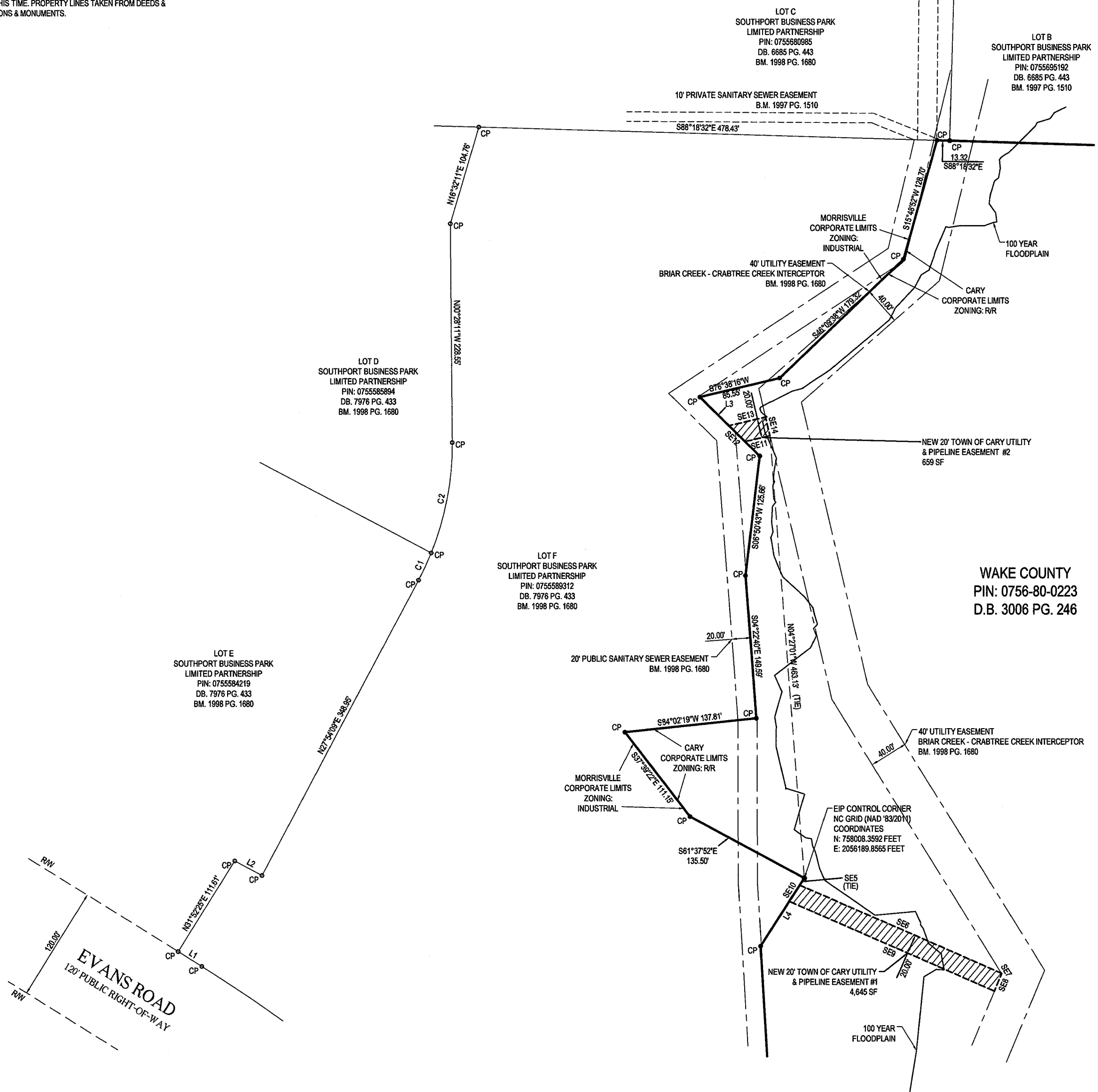
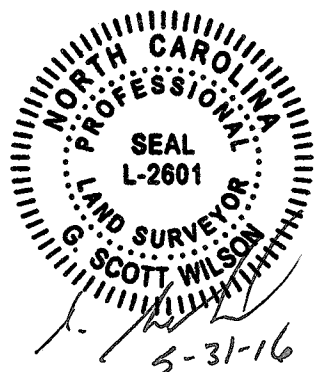


EXHIBIT "A"



- NOTE:
1. AREAS BY COORDINATE GEOMETRY UNLESS SHOWN OTHERWISE.
 2. ALL DISTANCES ARE HORIZONTAL GROUND DISTANCES.
 3. ALL STREETS ARE PUBLIC RIGHTS-OF-WAY UNLESS SHOWN OTHERWISE.
 4. OTHER INSTRUMENTS OF RECORD MAY AFFECT PROPERTIES.
 5. NO TITLE SEARCH PERFORMED FOR THIS SURVEY.
 6. NO NCQS MONUMENT WITHIN 2,000 FEET OF PROPERTIES.
 7. A PORTION OF PROPERTIES LIE IN A FEMA FLOOD HAZARD AREA PER FIRM NUMBER 3720075500J DATED MAY 2, 2006.
 8. PROPERTIES ARE ZONED INDUSTRIAL & R/R AS SHOWN.
 9. PROPERTY MAY BE SUBJECT TO NEUSE RIVER BUFFERS.
 10. BUFFER DELINEATION TO BE DETERMINED BY DWR BEFORE FINAL APPROVAL.
 11. THE COORDINATES SHOWN ON THIS PLAT WERE DERIVED BY VRS (VIRTUAL REFERENCE STATION) GPS USING DUAL FREQUENCY RECEIVER. THIS METHOD RESULTS IN (NAD 1983/2011) - (CORS 96) POSITIONS AND NAVD 88 (MSL) ELEVATIONS USING THE CONTINUOUSLY OPERATING STATIONS MAINTAINED BY NORTH CAROLINA GEODETIC SURVEY.
 12. NO FIELD PERIMETER BOUNDARY PERFORMED AT THIS TIME. PROPERTY LINES TAKEN FROM DEEDS & PLATS OF RECORD AND VARIOUS FIELD LOCATED IRONS & MONUMENTS.



CURVE TABLE				
CURVE	RADIUS	LENGTH	CHORD DIRECTION	CHORD
C1	301.20	31.28	N24°55'48"E	31.27
C2	301.50	118.01	N10°44'38"E	117.26

LINE TABLE		
LINE	DIRECTION	DISTANCE
L1	N58°07'42"W	28.10
L2	S61°49'08"E	32.27
L3	S45°32'08"E	87.62
L4	S32°32'10"W	84.65

UTILITY & PIPELINE EASEMENT LINE TABLE		
LINE	DIRECTION	DISTANCE
SE5	N32°32'10"E	8.84
SE8	S60°22'02"E	229.98
SE7	S31°47'02"E	0.68
SE9	S22°41'15"W	19.82
SE9	N65°22'02"W	233.99
SE10	N32°32'10"E	20.24
SE11	S76°47'53"W	26.61
SE12	N45°32'08"W	23.67
SE13	N76°47'53"E	39.27
SE14	S13°12'07"E	20.00

REFERENCES:

DB. 7976 PG. 433
DB. 3006 PG. 246
BM. 1998 PG. 1680

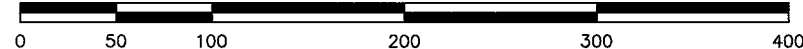
LEGEND

EIP = EXISTING IRON PIPE
CP = CALCULATED POINT

OWNER:
WAKE COUNTY
WAKE COUNTY ATTORNEY'S OFFICE
PO BOX 550
RALEIGH NC 27602-0550

"THIS MAP IS NOT A CERTIFIED SURVEY
AND HAS NOT BEEN REVIEWED BY A
LOCAL GOVERNMENT AGENCY FOR
COMPLIANCE WITH ANY APPLICABLE
LAND DEVELOPMENT REGULATIONS"

SCALE: 1" = 100'



REV.	DATE	DESCRIPTION	BY
1	05-31-16	REVISED PER REVIEW COMMENTS	DHG



BASS, NIXON & KENNEDY, INC.
CONSULTING ENGINEERS

- 6310 CHAPEL HILL ROAD, SUITE 250
RALEIGH, NORTH CAROLINA 27607
- TELEPHONE: (919)851-4422 OR (800)354-1879
- FAX: (919)851-8968
- CERTIFICATION NUMBERS: NCBELS (C-0110); NCBLA (C-0267)

SURVEYED BY
JO
DRAWN BY
DHG
CHECKED BY
SW
DATE
04-26-16

EASEMENT EXHIBIT
PROPERTY OF
WAKE COUNTY
FOR
TOWN OF CARY YORK INTERCEPTOR
PROJECT (SW1260)
MORRISVILLE CEDAR FORK TWSP WAKE COUNTY NORTH CAROLINA

SHEET
1
OF
1