



2016 PARTF Grant Application

Robertson Millpond Preserve

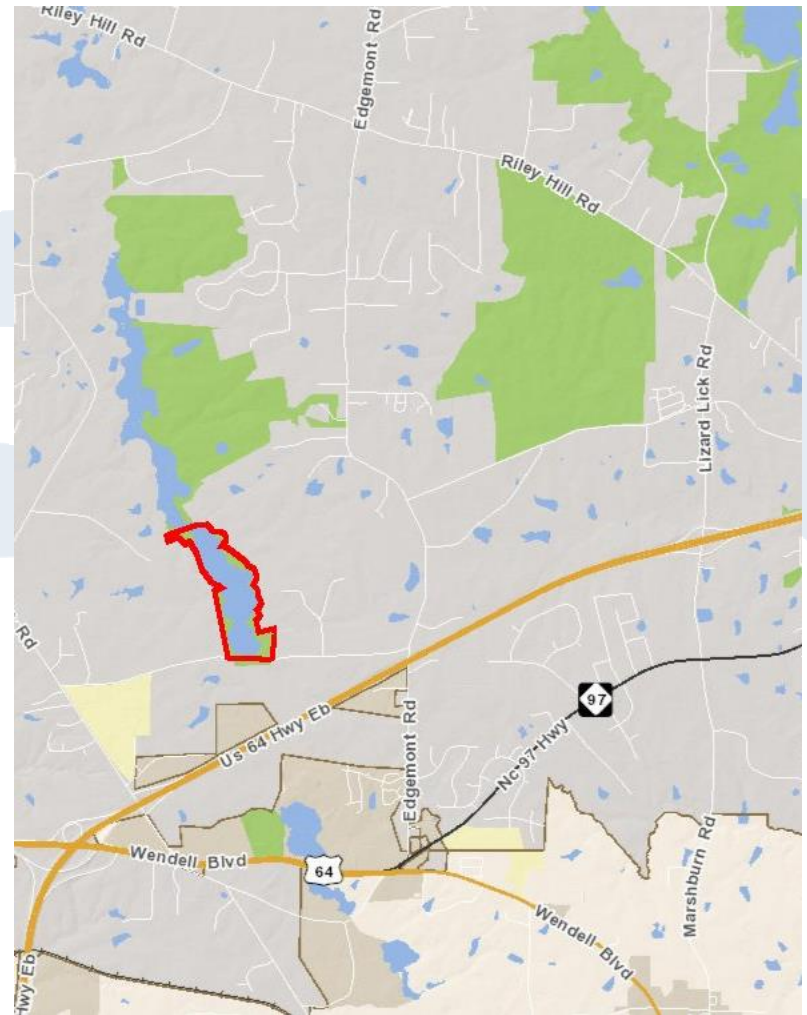


PARTF Grant Program

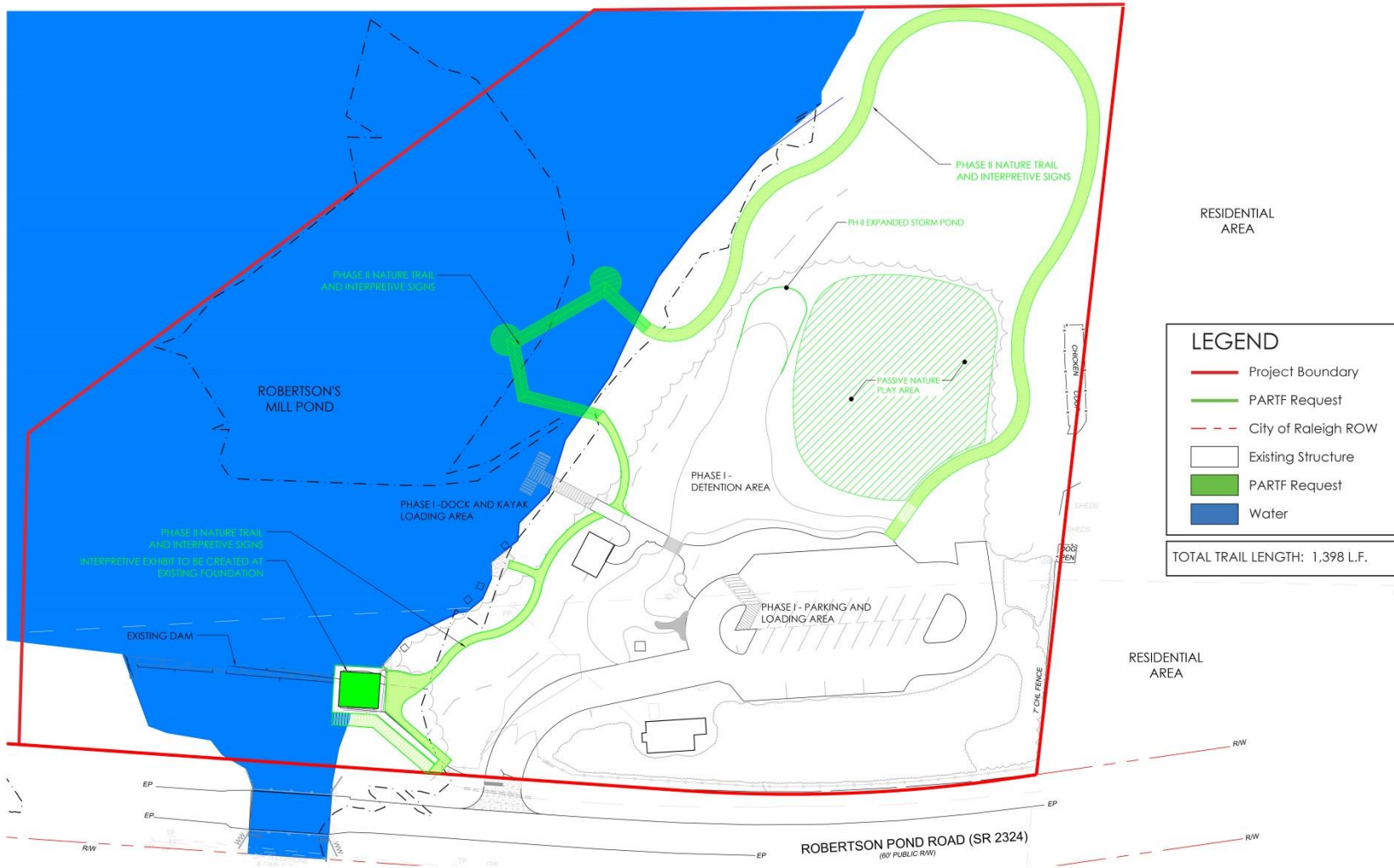
- **Parks and Recreation Trust Fund (PARTF) established by General Assembly in 1994**
- **Funding goals: improvements to state's park system, local government grants, increase public's access to state's beaches**
- **Local grants – matching funds to acquire land and/or develop parks & recreational projects**

Robertson Millpond Preserve – Area

- 85-acre site
- Near Zebulon, Knightdale, and Wendell
- Canoe/kayak access
- Recognized as significant natural area by NC Natural Heritage Program



Robertson Millpond Preserve – Site



SITE AREA: 84.6 ACRES
MARCH 30, 2016

*NOTE: SEE ILLUSTRATIVE PLANS FOR ADDITIONAL DETAILS REGARDING PARK PLANS

ROBERTSON MILLPOND PRESERVE

WAKE COUNTY PARKS, RECREATION, AND OPEN SPACE
WAKE COUNTY, NORTH CAROLINA

SITE PLAN

DHM DESIGN LANDSCAPE ARCHITECTURE
URBAN DESIGN + LAND PLANNING
ECOLOGICAL PLANNING

Estimated Project Costs – Phase II

Source of Funds	Amount
PARTF Grant Program	\$251,097
County Match (Open Space Bond Funds)	\$284,935
Total Phase II Costs	\$536,032

Next Steps

- **PARTF application due May 2, 2016**
- **PARTF Authority meets early fall 2016 to evaluate applications**
- **Grant recipients selected**
- **Grant contracts signed winter 2016/2017**

Action Requested

- **Hold a public hearing regarding the PARTF application**
- **Authorize the Chair to sign the completed application**

Public Hearing

Staff Recommendation

- That the Board of Commissioners authorizes the Chair to sign the completed Parks and Recreation Trust Fund grant application.