

# Rock Cliff Farm and the B.W. Wells Area – Falls Lake State Recreation Area

August 15, 2022

Chris Snow, Wake County Parks Recreation & Open Space Director



@wakegov



wakegov.com

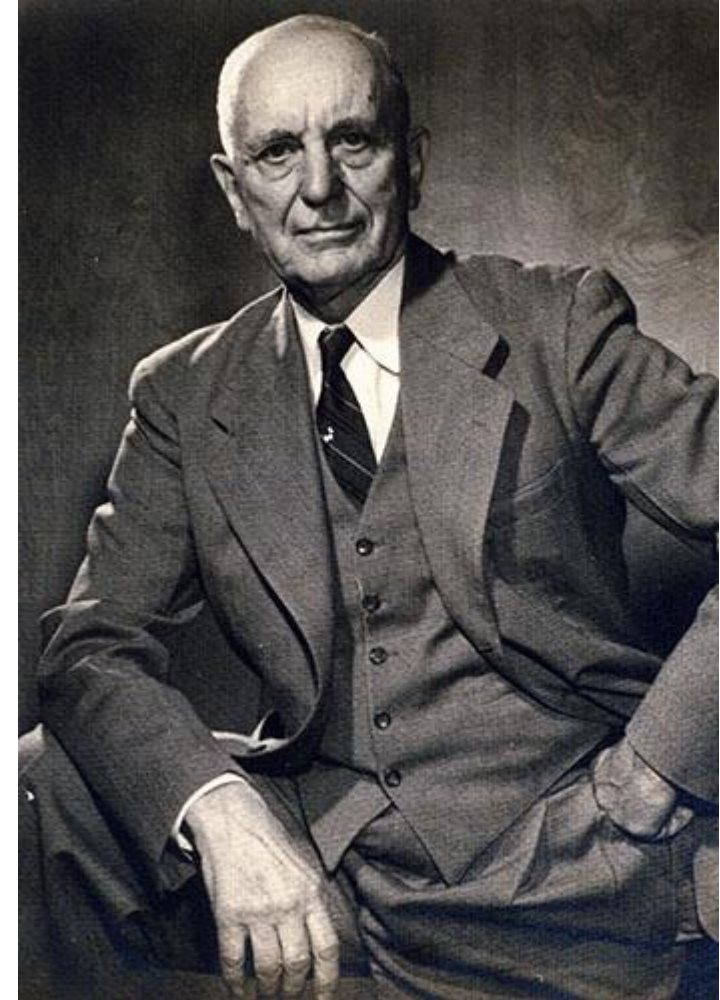
# Topics for Today

- Background & History
- Current Operations
- BW Wells Association Proposal
- Next Steps

# Background & History

Property named for B.W. Wells

- ecologist and conservationist
- chairman of the Botany Department at NC State University
- after retiring Wells and his wife moved Rockcliff Farm on the Neuse River, so named for its unique geology and wildflowers



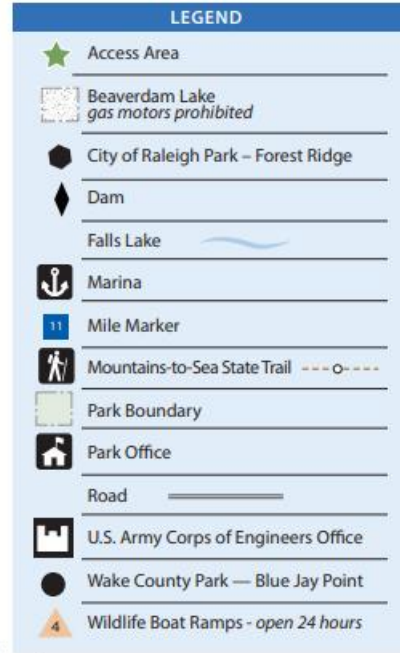


# Background & History





# FALLS LAKE STATE RECREATION AREA



		ACCESS						
		Beaverdam	B.W. Wells	Holy Point	Hwy 50	Rolling View	Sandling	Shinleak
AMENITY	Boat Ramp							
	Camping - Group							
	Camping - Tent							
	Camping - RV							
	Dump Station							
	Hot Showers							
	Community Bldg							
	Fishing							
	Marina							
	Parking							
	Picnicking							
	Picnic Shelters							
	Restrooms							
Swimming								

 For Campers Only

 Available at access area

 non-gas only



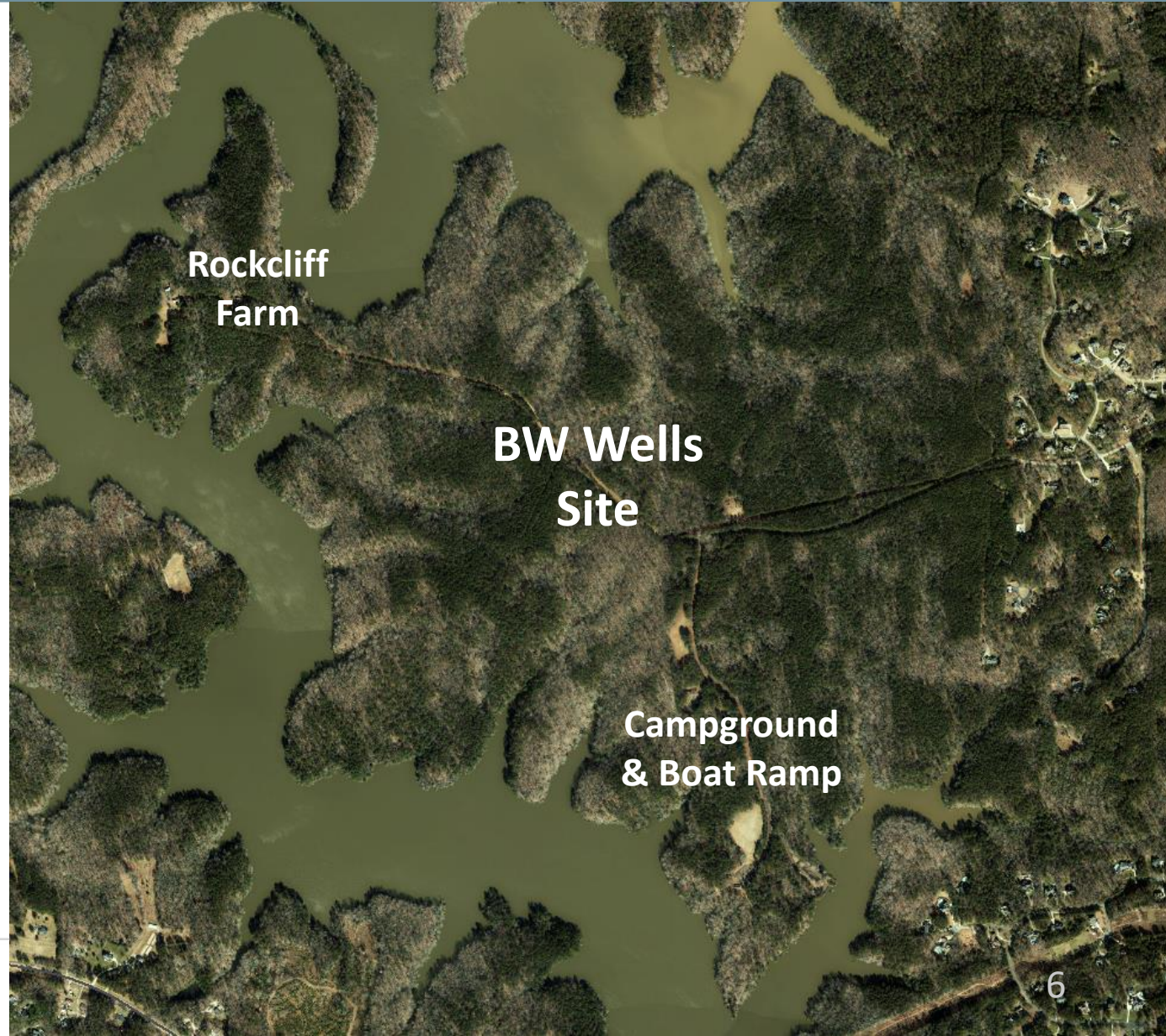
# Current Operations

## B.W. Wells

- 424 acres
- Campground (11 sites)
- Restrooms
- Boat ramp

## Rockcliff Farm

- 84 acres
- National Register (site and buildings)
- Requested guided tours only



# BW Wells Association Proposal

- Wake County would assume operational responsibility for the Rockcliff Farm (84 acres)
- Capital improvements to the area include:
  - Paving the road to a minimum width required for two-way traffic
  - Adding a 20-25 car parking lot
  - A new multi-use building for classrooms and other functions with bathrooms
  - Additional trails with information and education opportunities in conjunction with the NC Division of Parks and Recreation
  - Stabilization/Renovation/Demolition of existing buildings within National Register parameters
- Staffing and on-going operational funding

# County Resources Required

- Staff has visited the site on several occasions
- Initial estimate for capital cost is \$7,700,000
- Additional planning and study would need to truly understand potential cost
- Operating costs would be determined after development of a concept plan



# Next Steps

- Open Space and Parks Advisory Committee is touring the site on August 22
- Discussions with the North Carolina Division of Parks & Recreation and the US Army Corps of Engineers
- Additional planning and study (concept plan) for the site to better understand scope and costs – both capital and on-going

# Discussion

