

Planning Three New Nature Preserves

April 4, 2022

Chris Snow, Parks Recreation & Open Space Director

@wakegov



wakegov.com

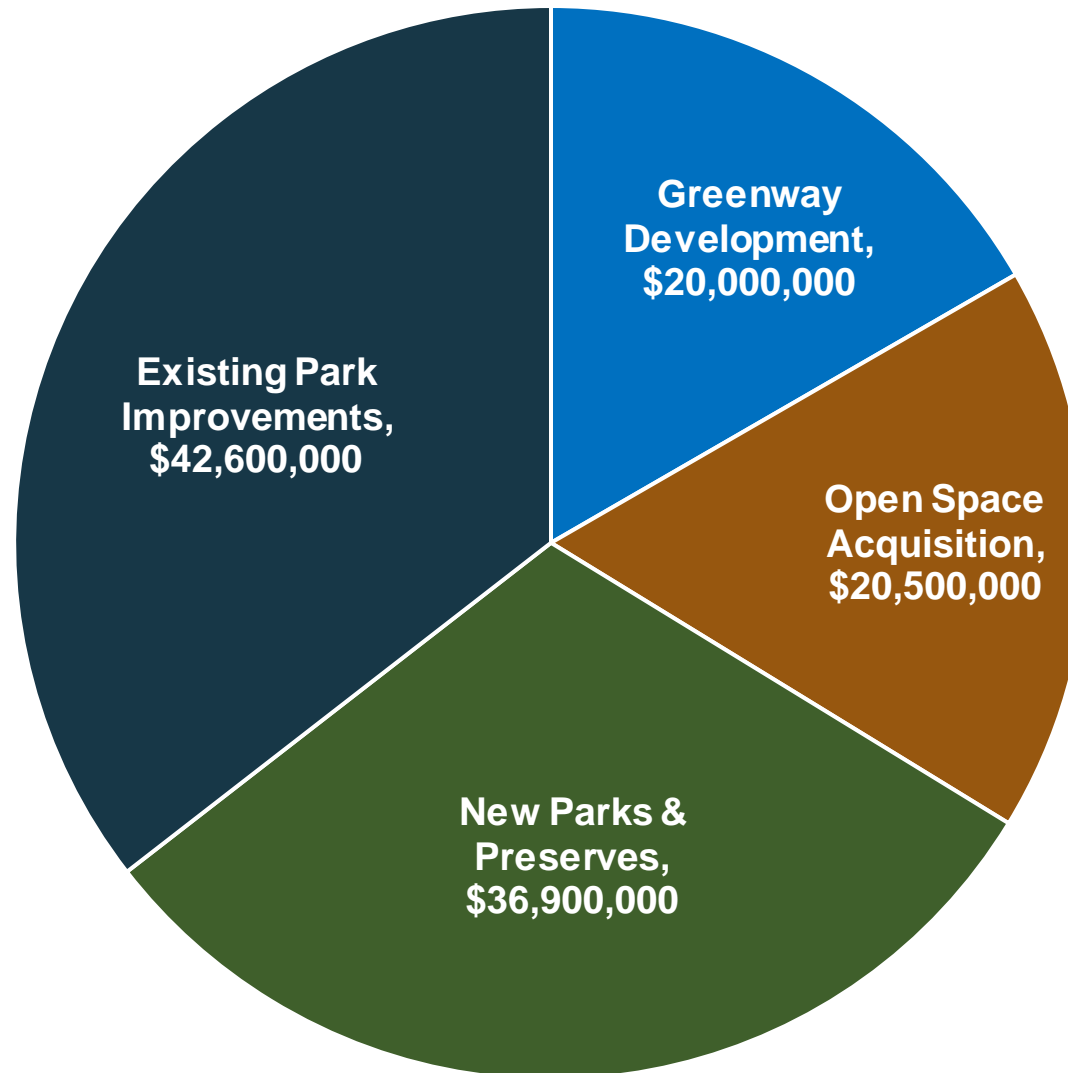
Topics for Today

Two separate items, consider each separately.

- CIP Funding
- New Nature Preserves
- Swift Creek Greenway

Current CIP Projects and Available Funding

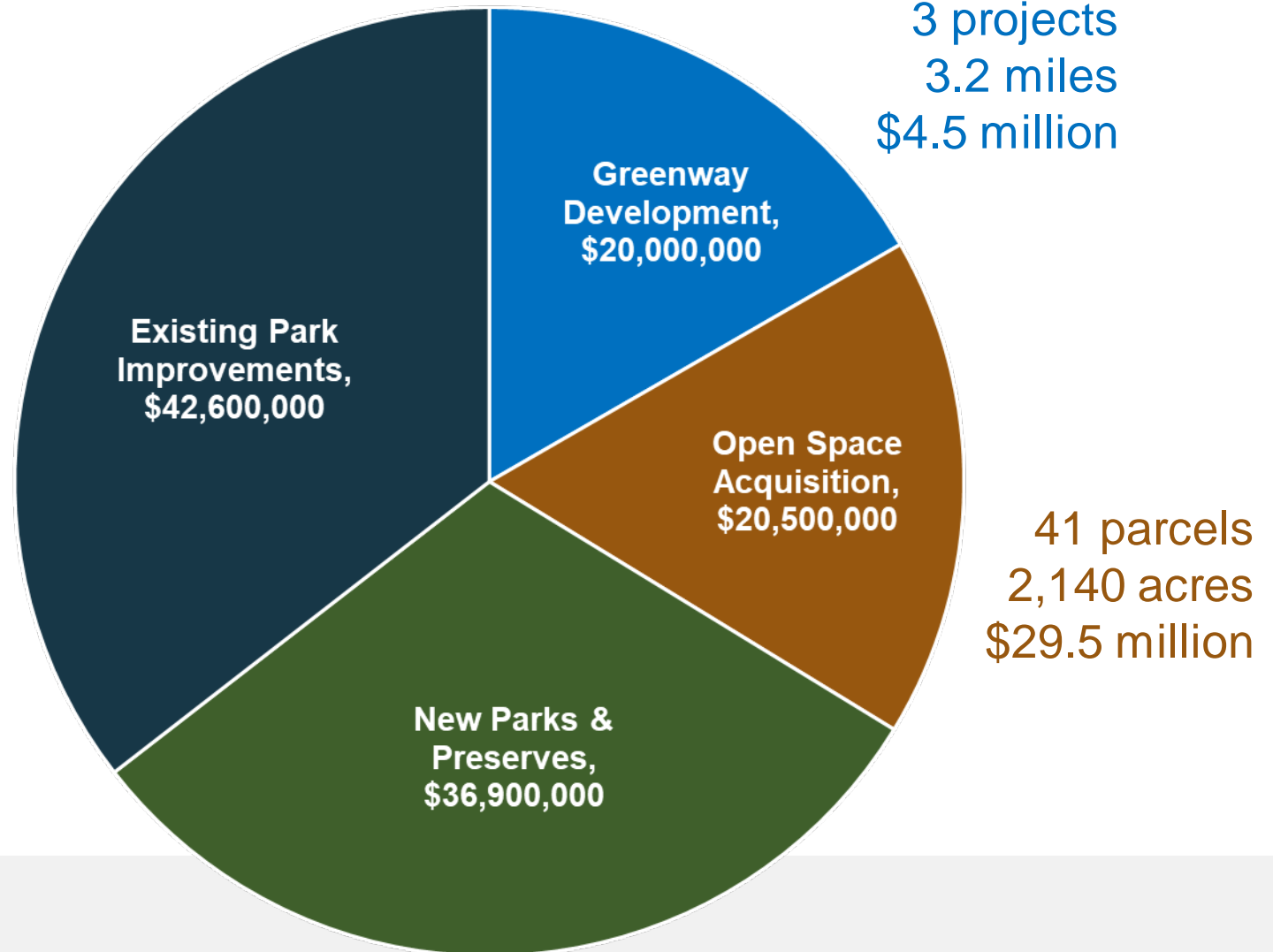
\$120 million



Current CIP Projects and Available Funding

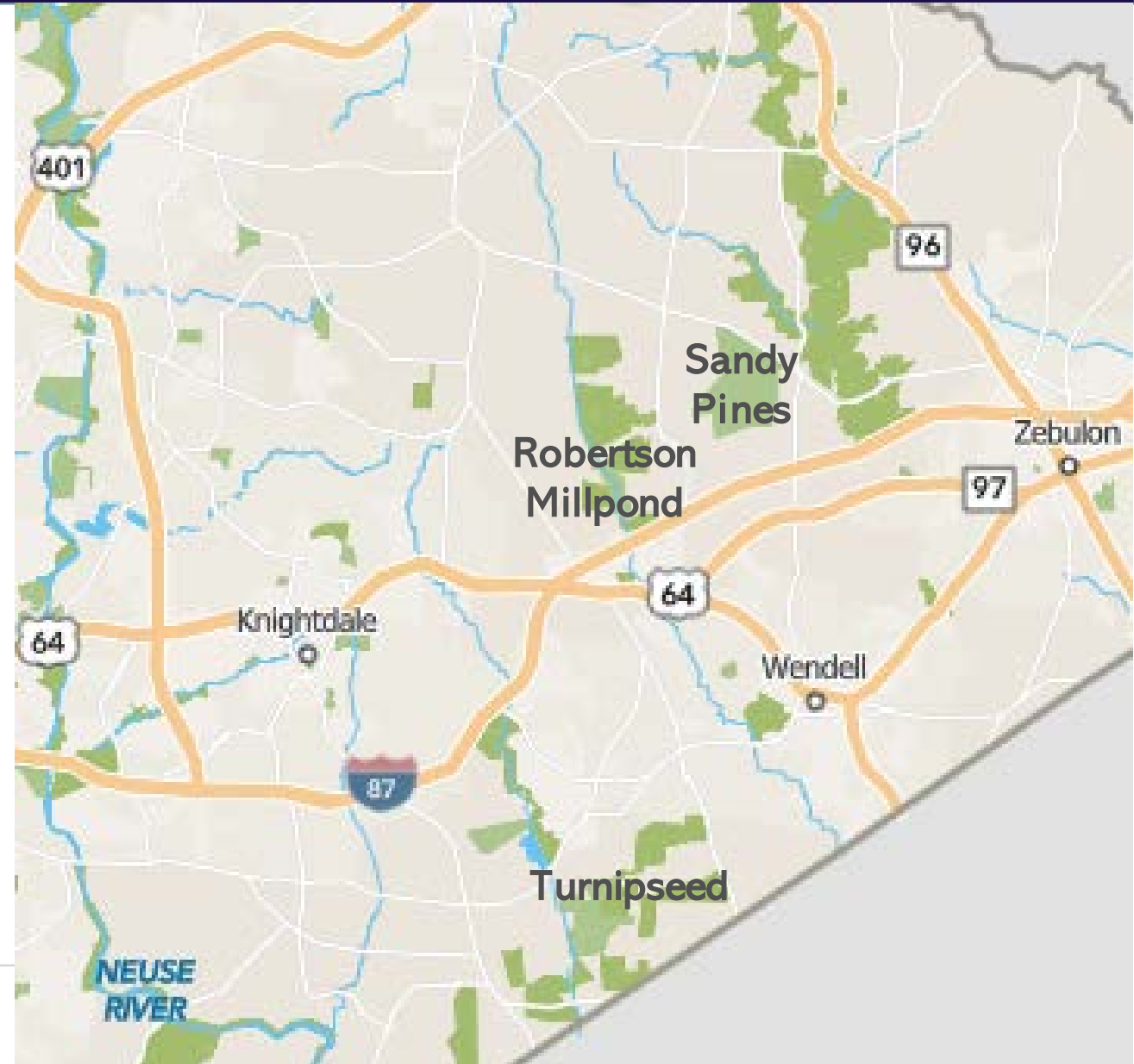
Blue Jay Point	\$ 5.7 M
Harris Lake	\$ 5.7 M
Historic Oak View	\$ 3.5 M
Lake Crabtree	\$ 6.2 M
Crowder	\$ 7.3 M
Yates Mill	\$ 4.7 M
ATT	\$ 6.8 M
Green Hills	\$ 2.7 M
Total	\$ 42.6 M

Beech Bluff County Park	\$ 13.6 M
Kellam Wyatt Preserve	\$ 3.5 M
Lake Myra County Park	\$ 16.0 M
Sinclair Preserve	\$ 1.3 M
Buffalo Creek Preserve	\$ 2.5 M
Total	\$ 36.9 M



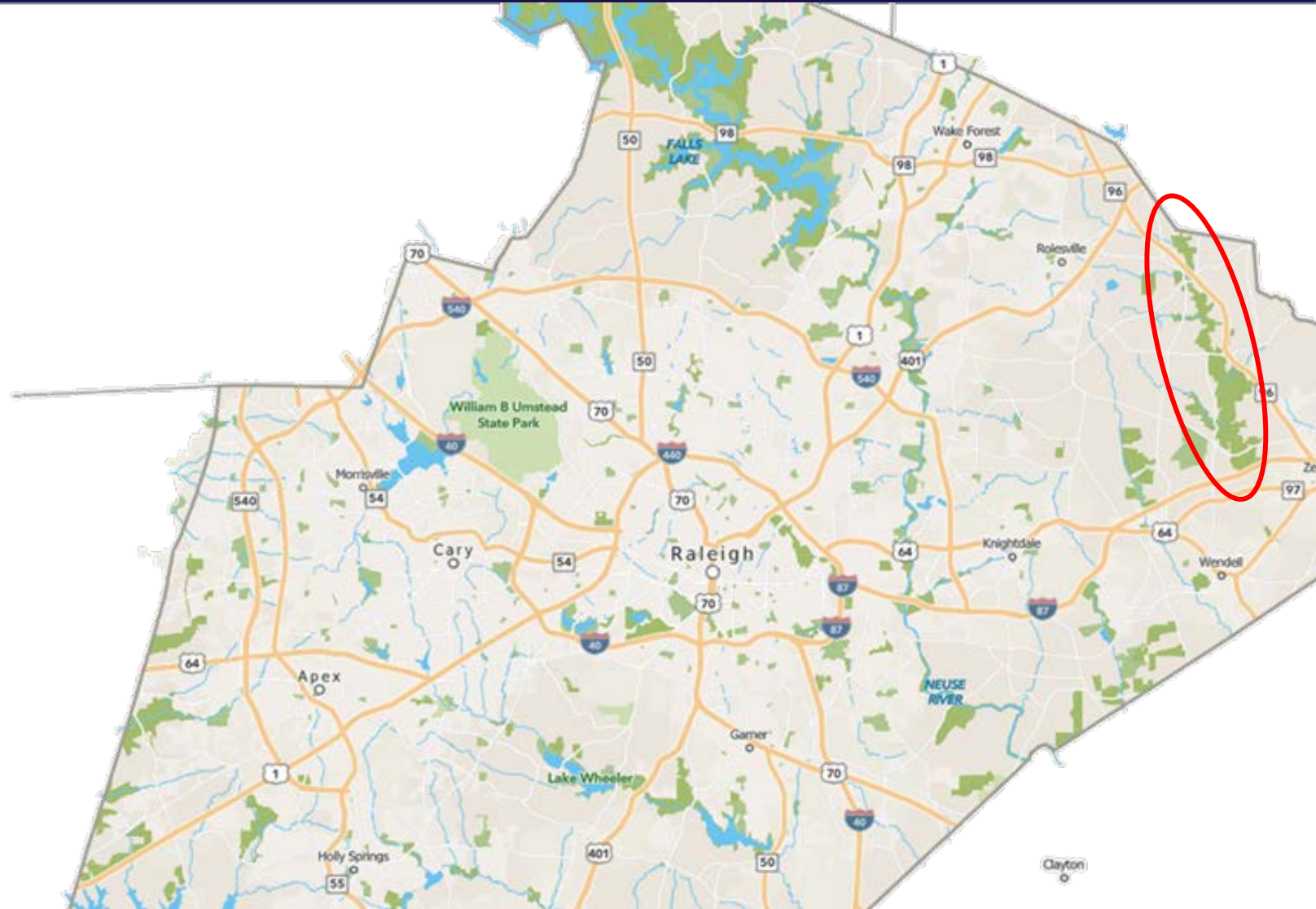
Existing Preserves

- Sandy Pines Preserve
 - Equestrian & Hiking
- Robertson Millpond Preserve
 - Canoe/Kayaking & Fishing
- Turnipseed Nature Preserve
 - Hiking & Walking
- Minimally Developed
- Goals of the Open Space Program while also meeting the needs/desires of the community



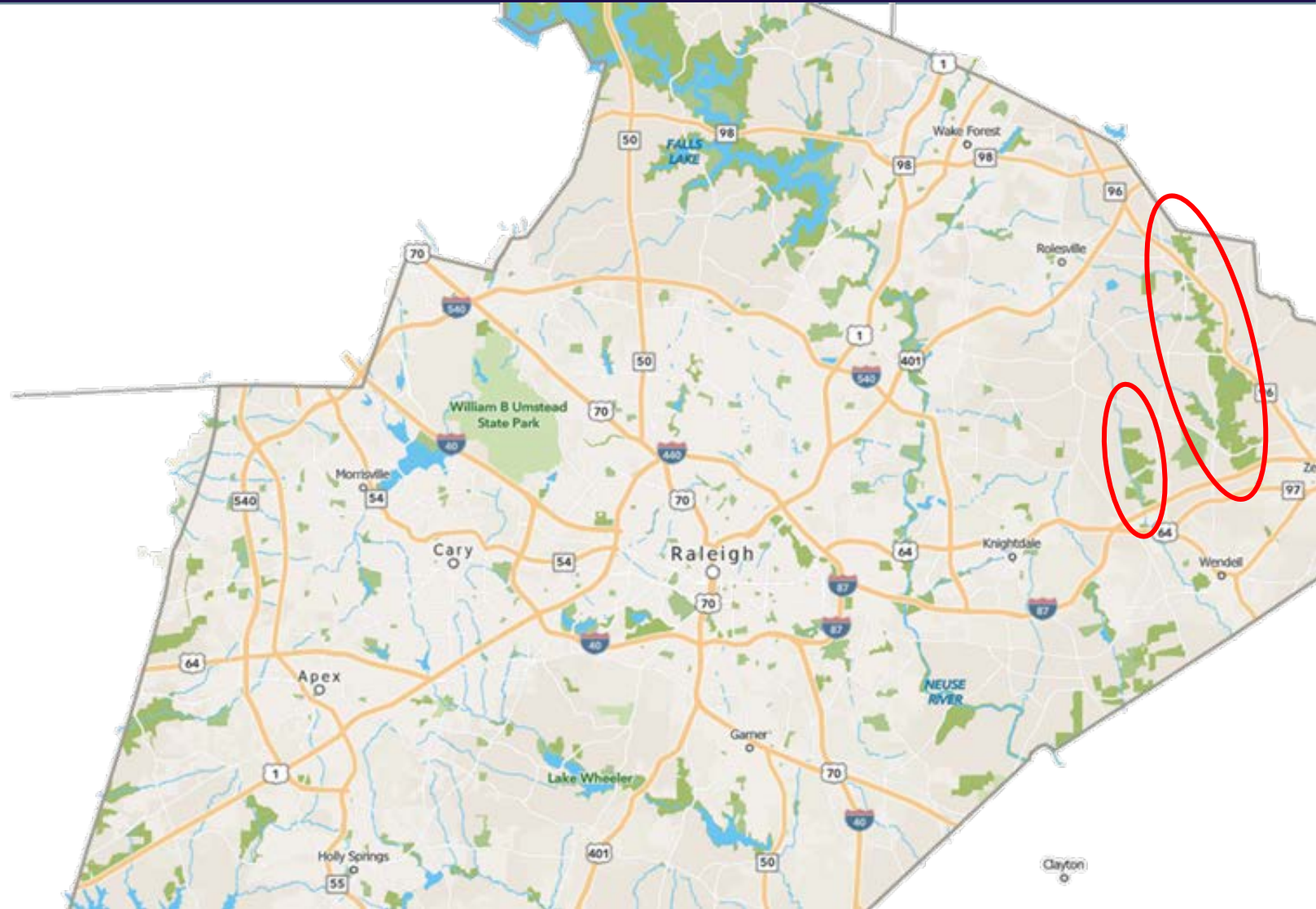
Proposed Preserves

- Little River



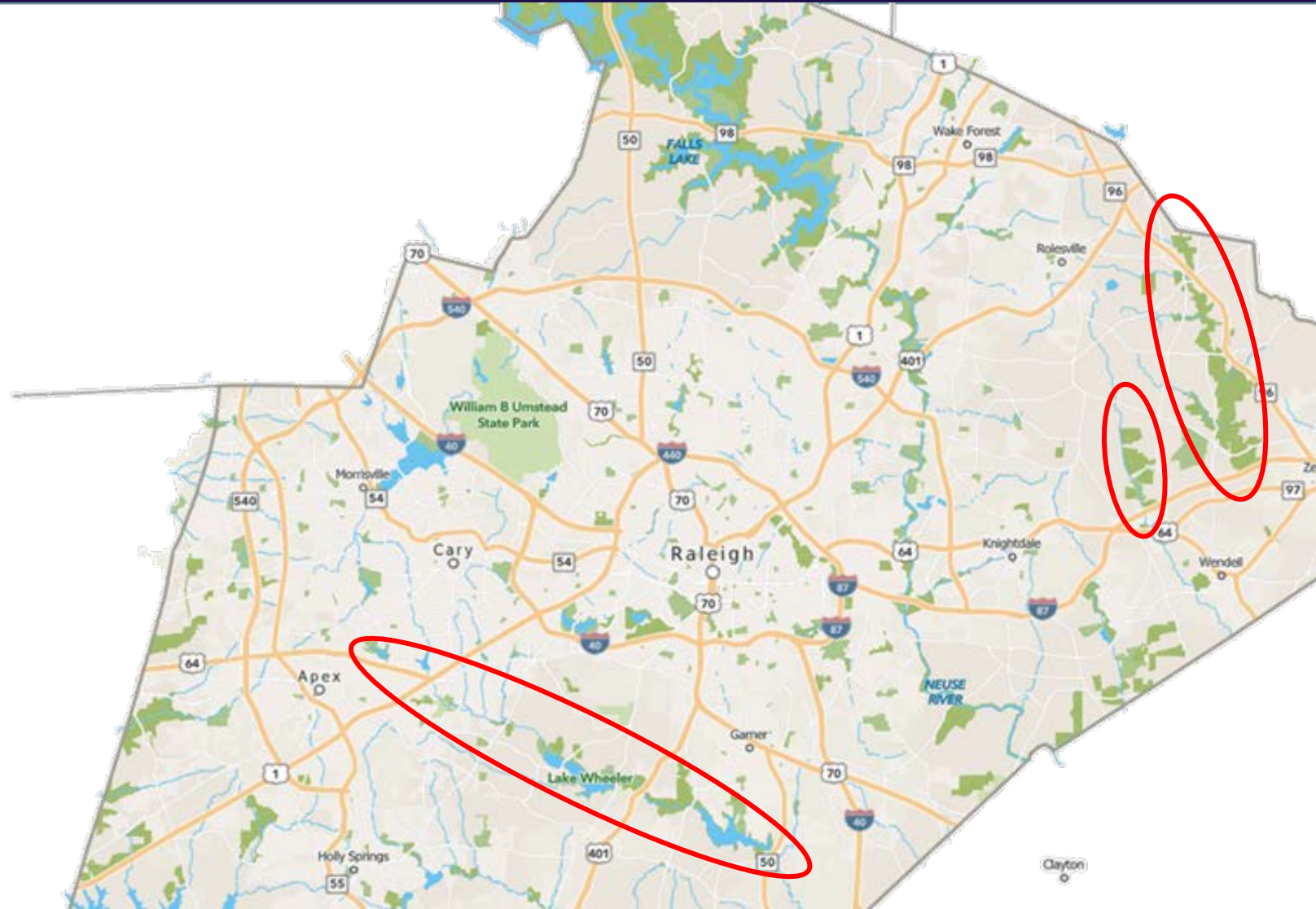
Proposed Preserves

- Little River
- Buffalo Creek



Proposed Preserves

- Little River
- Buffalo Creek
- Swift Creek



Little River & Buffalo Creek

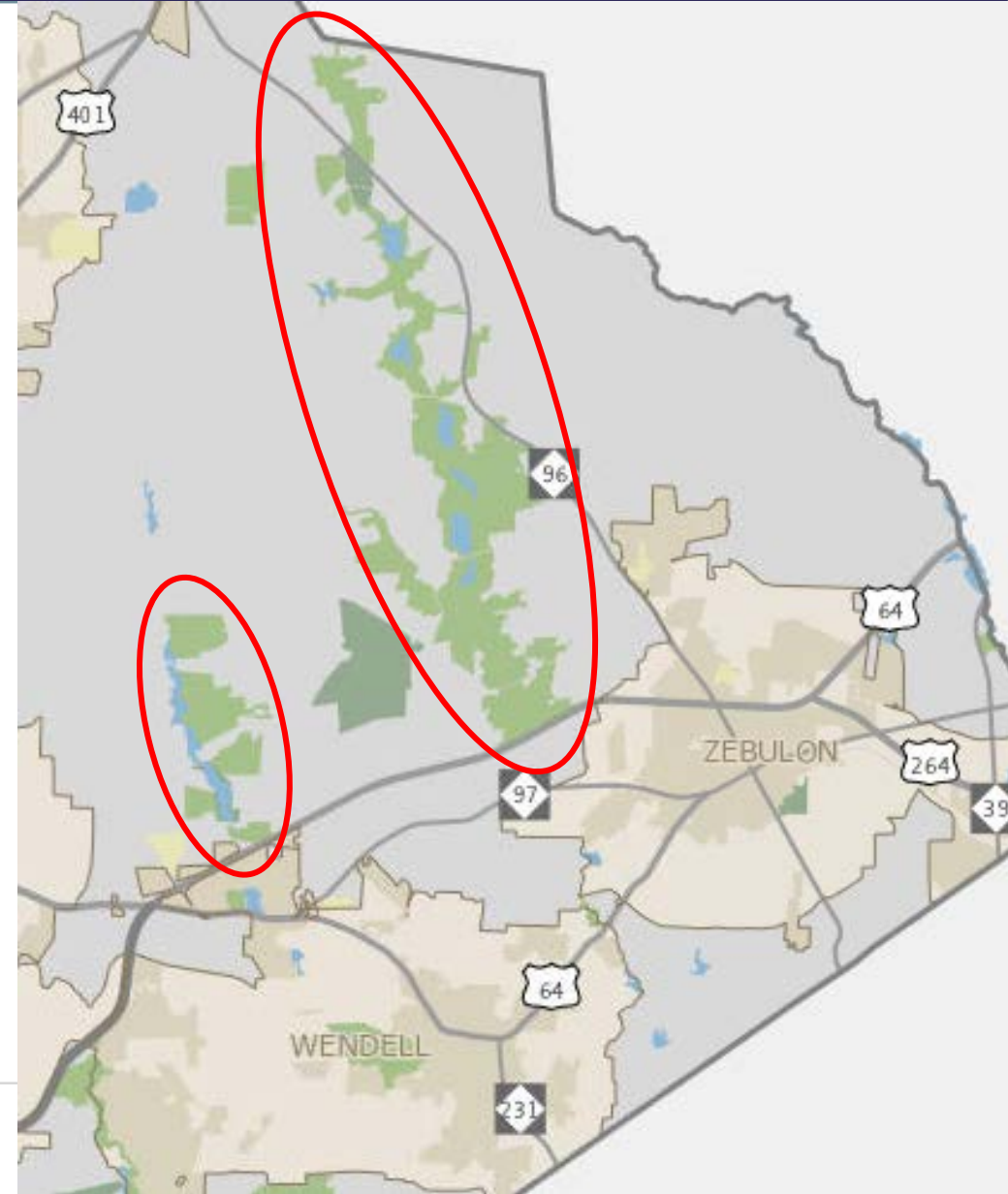
Little River

Future Reservoir	1,938 acres
County Park	341 acres
State Park	80 acres
County Open Space	<u>1,330 acres</u>
	3,689 acres

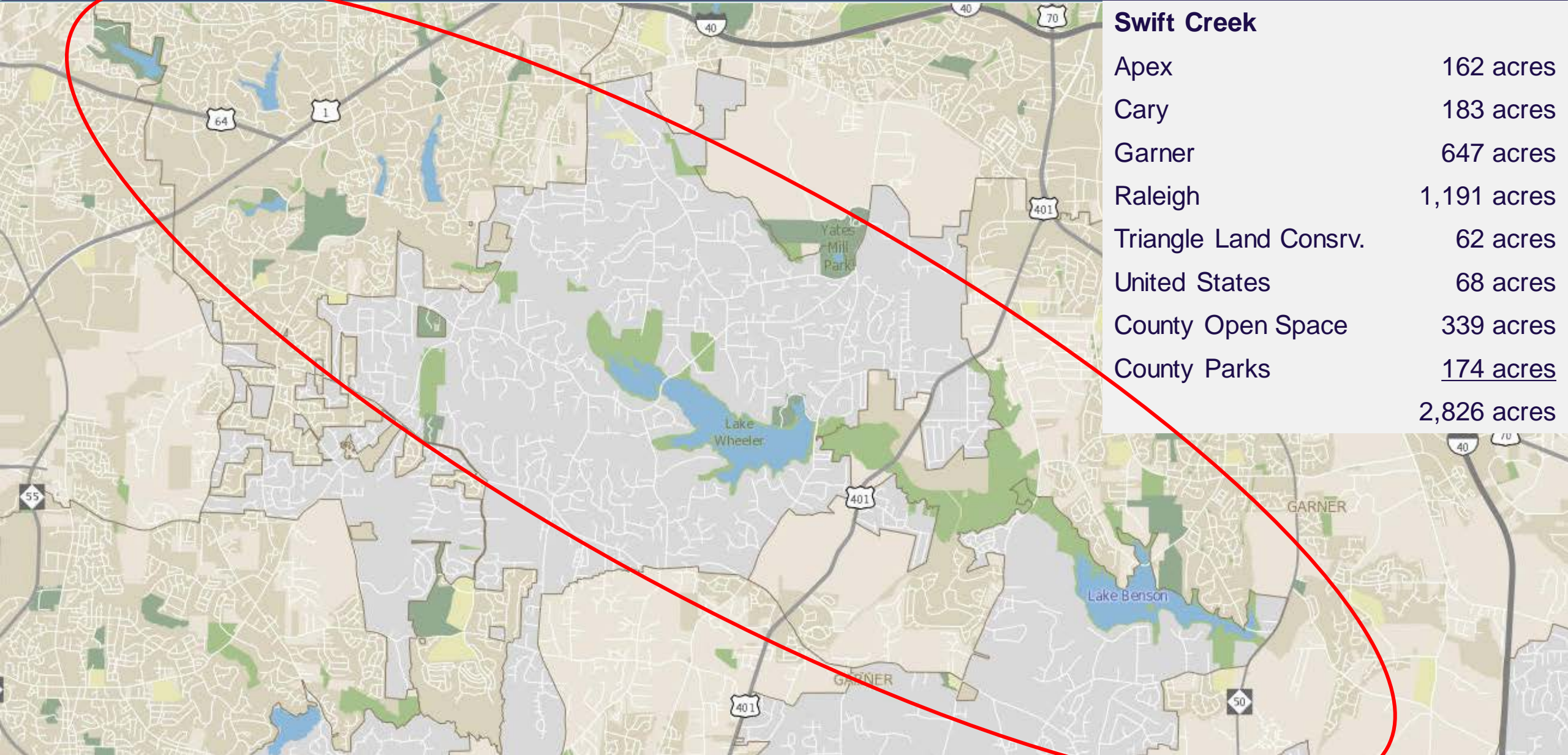
Buffalo Creek

County Open Space	939 acres
-------------------	-----------

WAKE COUNTY



Swift Creek



Swift Creek	
Apex	162 acres
Cary	183 acres
Garner	647 acres
Raleigh	1,191 acres
Triangle Land Consvr.	62 acres
United States	68 acres
County Open Space	339 acres
County Parks	<u>174 acres</u>
	2,826 acres

Planning Process

- ✓ Site Identification
- Consultant selection
- Master plan
- Design and permitting
- Bidding
- Construction
- Opening

Concept plan is a less detailed illustration of the core ideas you wish to incorporate on your site, and the opportunities that might exist to facilitate these ideas.

Recommendation

Utilize up to \$200,000 of 2018 Parks Recreation Greenway and Open Space bond funding to produce three concept plans for nature preserves in Little River, Buffalo Creek and Swift Creek.

Recommendation

Authorize a Request for Qualifications (RFQ) for Consultant

Utilize up to \$3.5 million of 2018 Parks Recreation Greenway and Open Space bond funding to complete 100% design on the Swift Creek Greenway