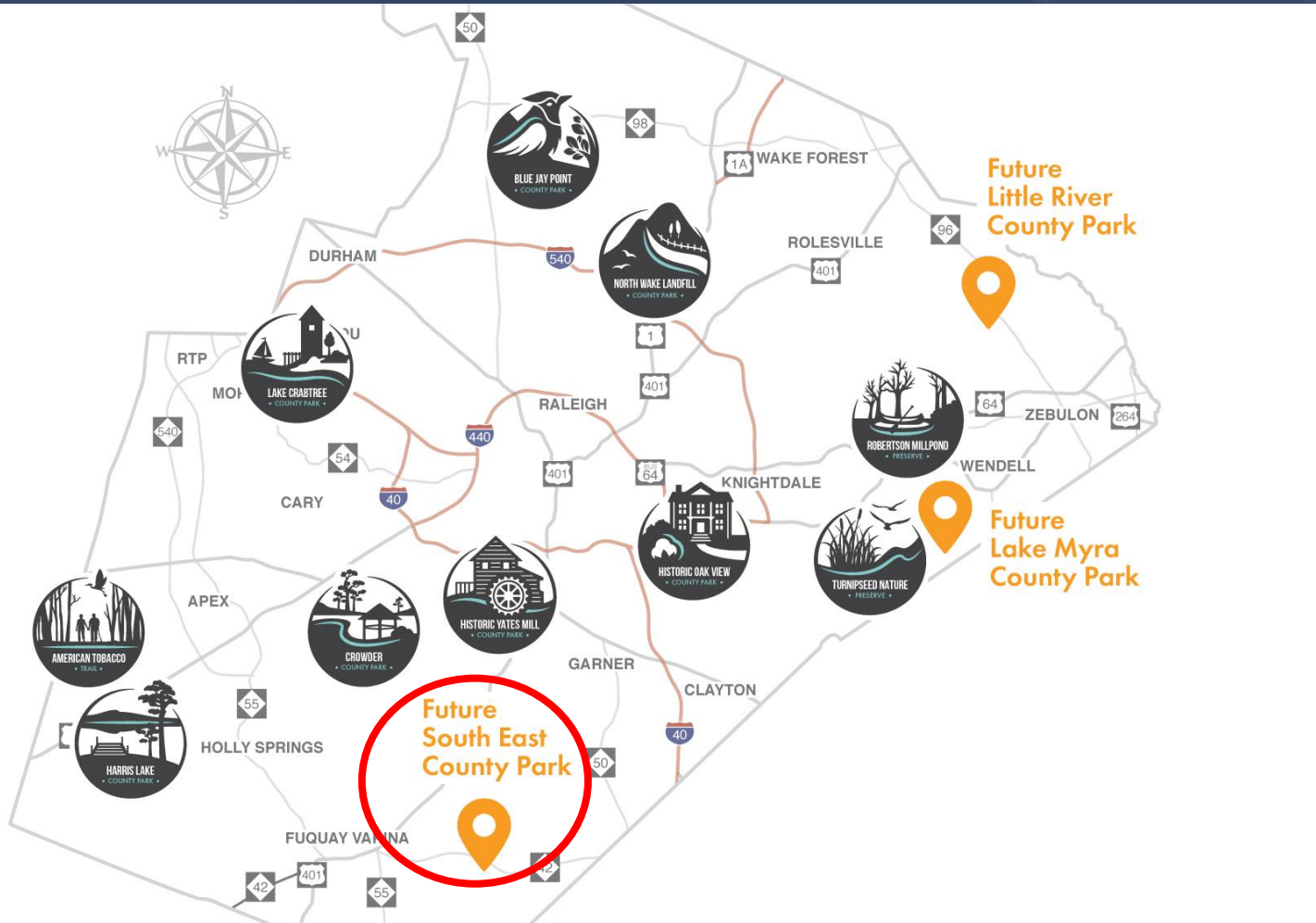


Acquisition of the Adams Property to be added to the future South East County Park

Wake County Board of Commissioners
September 5, 2017

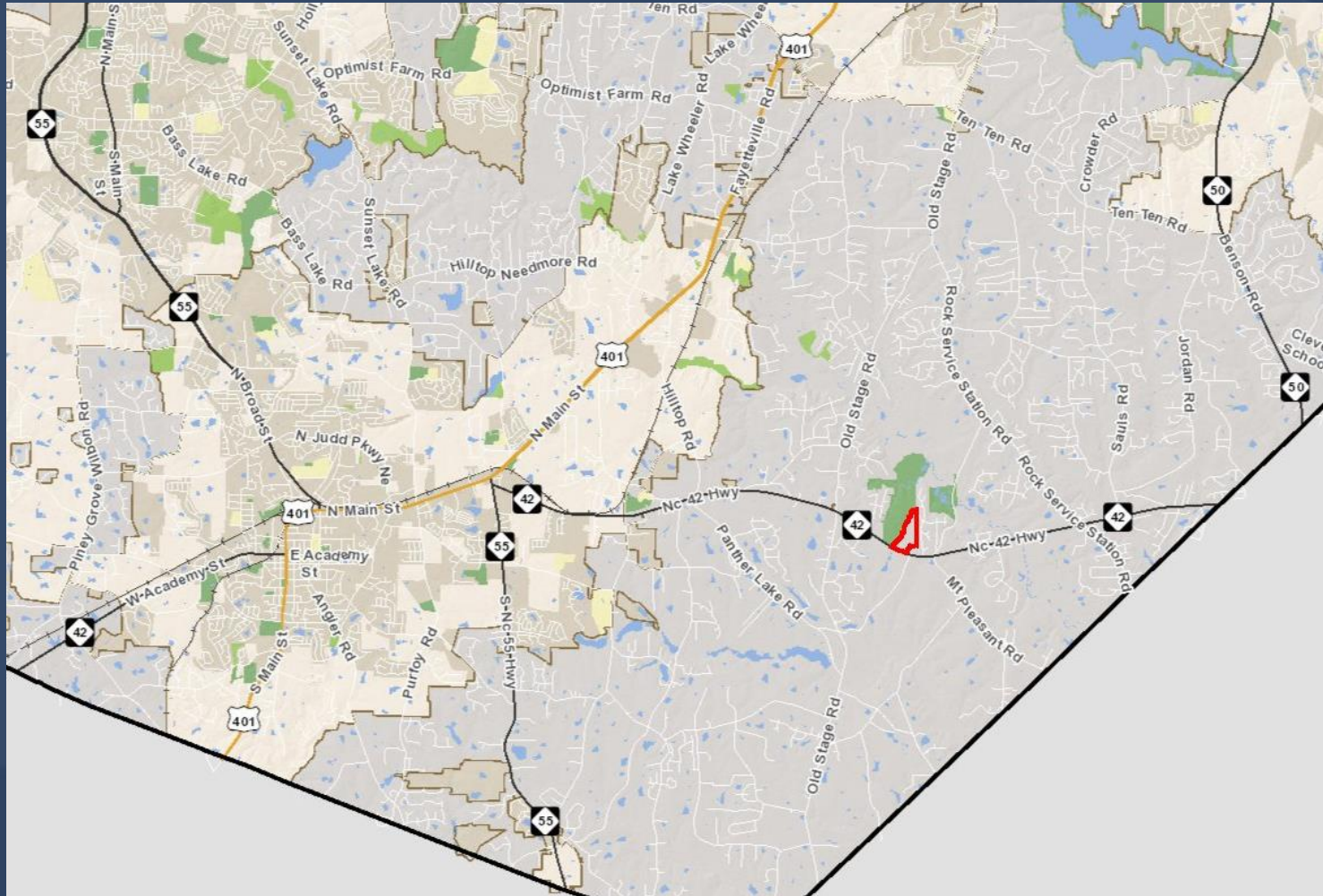


Wake County Parks Recreation & Open Space

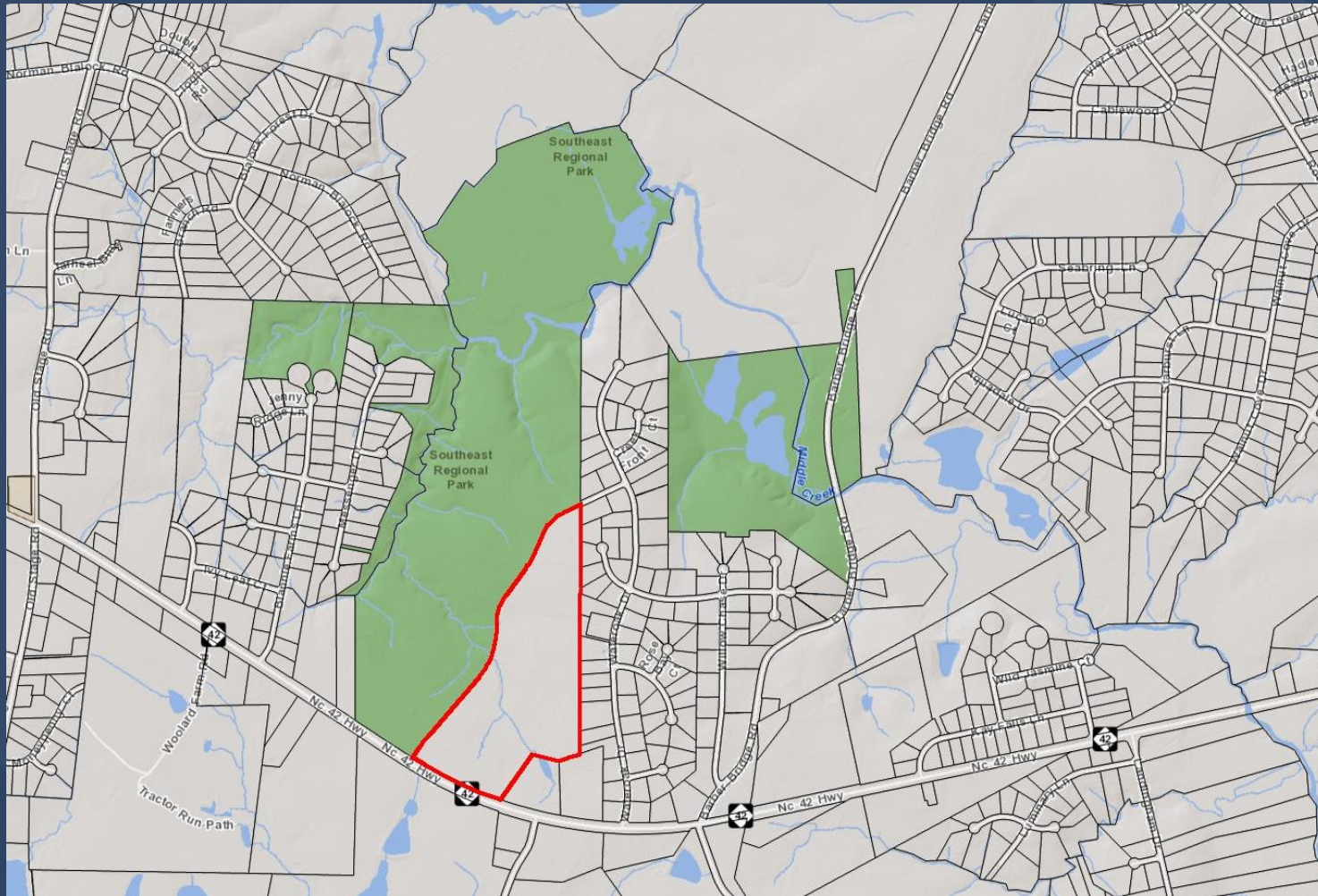


- 1976 – became a Division within Wake County Government
- 1988 – Opened our first “County” Park – Lake Crabtree
- Seven parks, the American Tobacco Trail and two Nature Preserves
- Three future parks:
 - Little River
 - Lake Myra
 - South East

South East Wake County Park

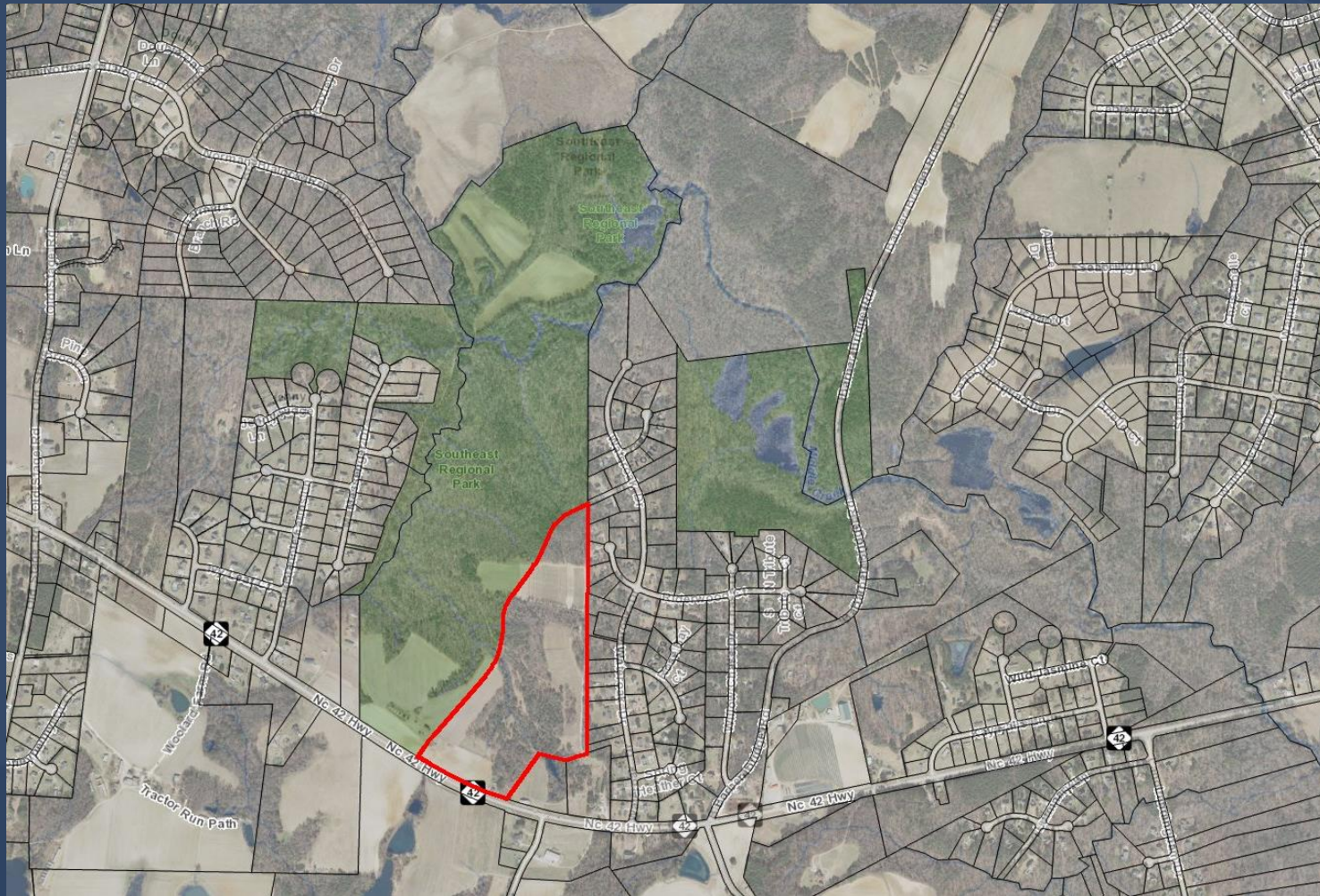


South East Wake County Park



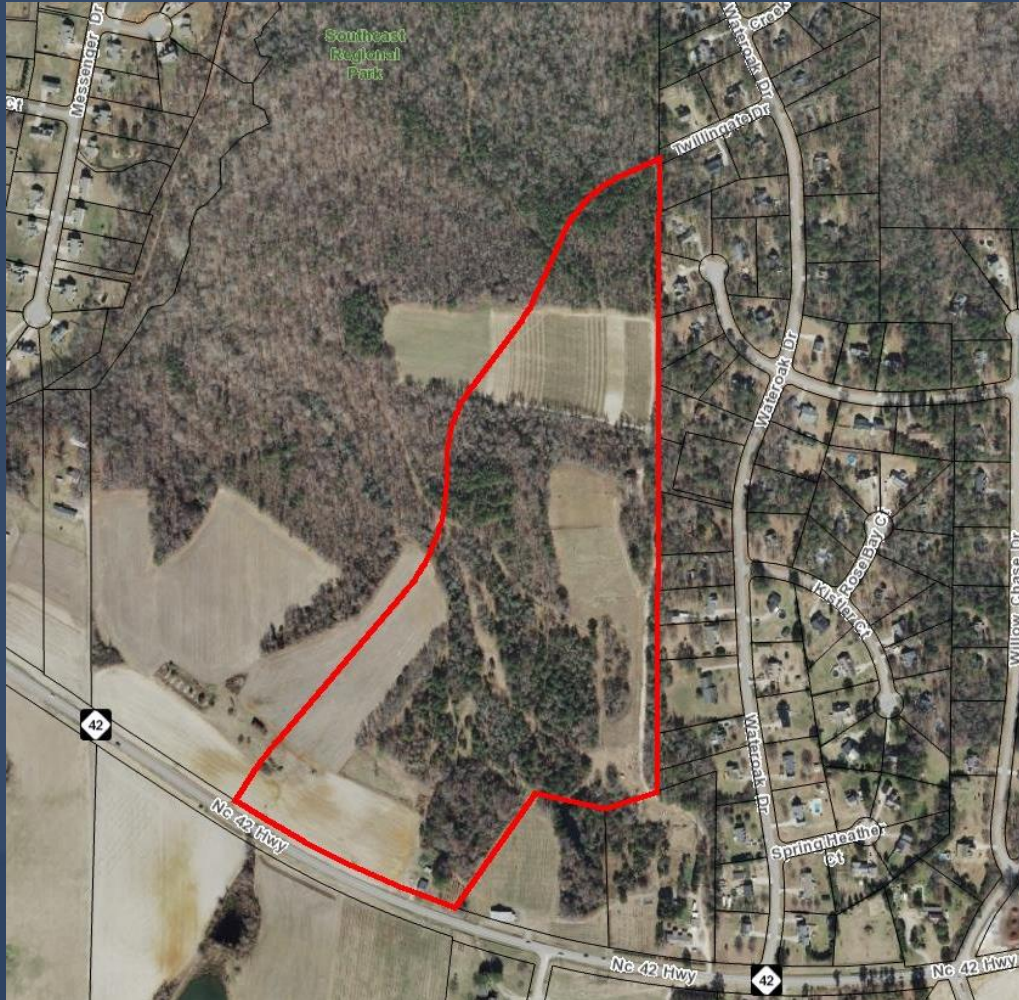
- 2004 – began land acquisition
- Seven parcels
- 259 acres
 - Two through RLDO donation
- Adams property - 43.58 acres
- Total acres = 302

Adams Property



- 43.58 acres
- Mix of farmland and forest
- Agricultural lease

Board Action



That the Board of Commissioners:

Appropriates \$441,724 of Southeast Regional Wake County Park Funds, \$116,842 in Recreation Area Land Contribution Funds, \$111,434 in Open Space Funds; and

Authorizes the County Manager to execute an agreement to purchase the Adams Family Property, subject to terms and conditions acceptable to the County Attorney