

SITE DATA TABLE

1. SITE SUMMARY

OWNER/DEVELOPER: WAKE COUNTY
PO BOX 550
RALEIGH, NC 27602

ENGINEER: SCS ENGINEERS
3801 LAKE BOONE TRAIL, SUITE 410
RALEIGH, NC 27807
CONTACT: KENTON YANG, PE
EMAIL: KYANG@SCSENGINEERS.COM

ARCHITECT: ESSE ARCHITECTS
632 PERSHING ROAD
RALEIGH, NC 27608
CONTACT: MIRANDA POTTHOFF, AIA
EMAIL: MIRANDA@ESSE-ARCHITECTS.COM

**CIVIL ENGINEER/
LANDSCAPE ARCHITECT:** TIMMONS GROUP
5410 TRINITY ROAD, SUITE 102
RALEIGH, NC 27607
CONTACT: KEVIN T. BARNES, PLA
EMAIL: KEVIN.BARNES@TIMMONS.COM

MEP ENGINEERS: SIGMA ENGINEERED SOLUTIONS, PC
5909 FALLS OF NEUSE ROAD, SUITE 101
RALEIGH, NC 27609
CONTACT: REGGIE ADAMS, PE
EMAIL: RADAMS@SIGMAES.COM

SITE ADDRESS(S)/PARCEL PIN: 414 AVIATION PKWY 0755462762 12.88 ACRES

SITE DATA TABLE

TOTAL SITE AREA: 12.88 ACRES

TOTAL IMPERVIOUS AREA: 4.09 ACRES / 213,418.54 SF

ZONING: INDUSTRIAL MANAGEMENT (IM) DISTRICT

PROPOSED USE: EXTRACTION AND LANDFILL USES (ALLOWED AS A SPECIAL USE)

EXISTING USE: INDUSTRIAL AND SERVICE USES

PRINCIPAL INTENSITY AND DIMENSIONAL STANDARDS:

LOT STANDARDS:	MIN.	REQUIRED	PROPOSED
MIN. NET LOT AREA (SF)	80,000 SF	80,000 SF	561,052 SF
LOT WIDTH (FT)	200 LF	200 LF	1,584.18 LF
MAX. NET DENSITY (DU/AC)	N/A	N/A	N/A
MAX. LOT COVERAGE (%)	65 %	65 %	47.8 %

SETBACKS:

MIN.	MIN. FRONT (FT)	30'
MIN. SIDE (FT) <td>20'</td> <td>20'</td>	20'	20'
MIN. CORNER SIDE (FT) <td>20'</td> <td>20'</td>	20'	20'
MIN. REAR (FT) <td>30'</td> <td>30'</td>	30'	30'

TREE CANOPY RETENTION:

MIN. NET LOT AREA (%)	13 %	30 %	
COMMON OPEN SPACE:	MIN. NET LOT AREA (%)	10 %	13 %

PERIMETER BUFFER: 20' TYPE D BUFFER (SEE PLANTING PLAN, SHEET L-3.0)

STREETYARD BUFFER: 20' TYPE G BUFFER (SEE PLANTING PLAN, SHEET L-3.0)

PARKING: REQUIRED 1 SPACE/EMPLOYEE [6] IN TABLE 5.10.3.A. OF THE UDO

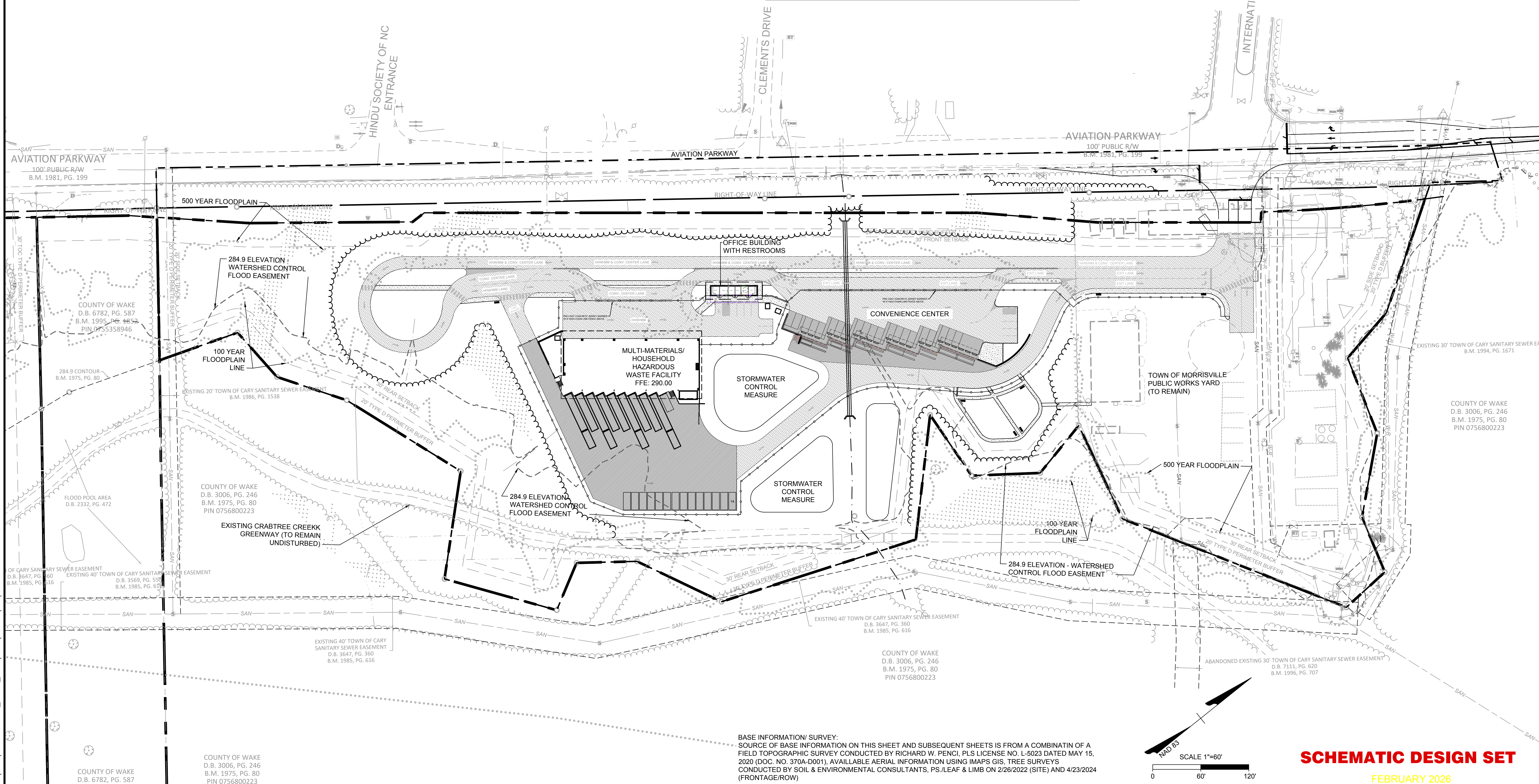
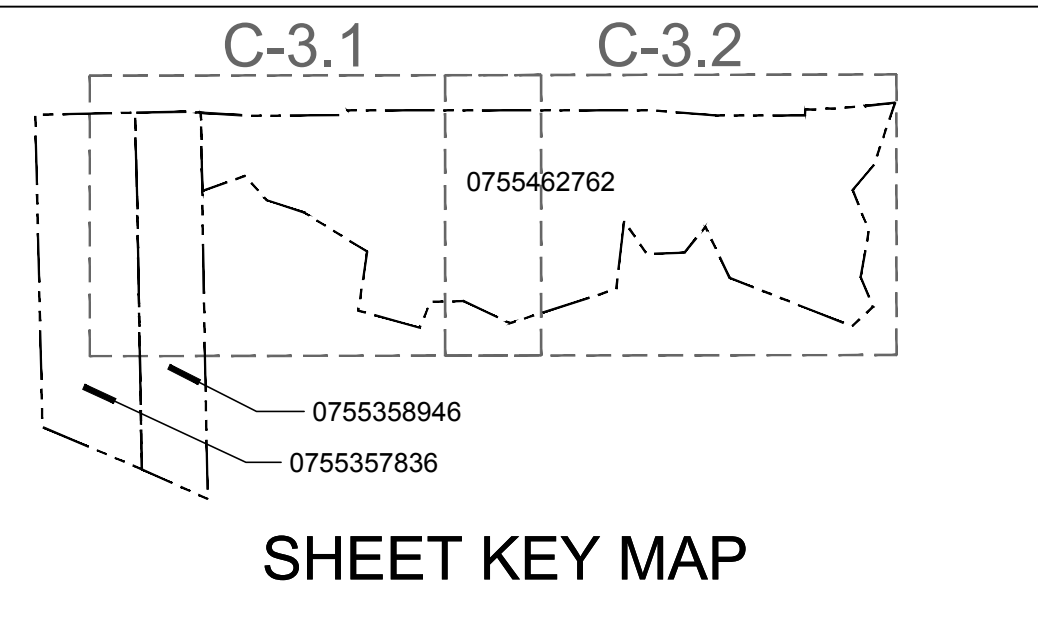
PROPOSED 7 PARKING SPACES REQUIRED
13 PARKING SPACES PROPOSED

LEGEND

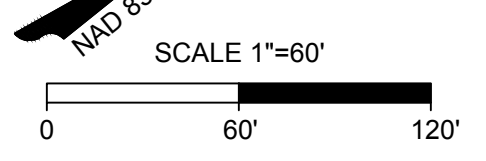
	EXISTING	PROPOSED
FENCE	X	○
GAS LINE	G	G
POWER LINE	UGP	UGP
TELEPHONE LINE	UGT	UGT
WATER LINE	W	W
SANITARY SEWER LINE	SAN	SAN
CABLE TV LINE	UCATV	UCATV
FIBER OPTIC LINE	UFO	UFO
STORM PIPE	---	---
ROOF DRAIN PIPE	---	RD
CONSTRUCTION LIMITS	---	---
LIGHT POLE	○ LP	○ LP
SITE BOLLARD	⊙	⊙
UTILITY POLE	○ PP	○ PP
SANITARY SEWER MANHOLE	⊙ MH	⊙ MH
STORM DRAINAGE MANHOLE	⊙ MH	⊙ MH
CLEANOUT (SANITARY OR STORM)	⊙ CO	⊙ CO
DROP INLET	DI	DI
FIRE HYDRANT	⊙ FH	⊙ FH
WATER VALVE	⊙ WV	⊙ WV
TELECOM BOX	⊙	⊙
DRAINAGE STRUCTURE ID:		A1

HATCH LEGEND

[Hatched Box]	HEAVY DUTY CONCRETE
[Dotted Box]	HEAVY DUTY ASPHALT
[Stippled Box]	CONCRETE SIDEWALK



BASE INFORMATION/ SURVEY:
SOURCE OF BASE INFORMATION ON THIS SHEET AND SUBSEQUENT SHEETS IS FROM A COMBINATIN OF A FIELD TOPOGRAPHIC SURVEY CONDUCTED BY RICHARD W. PENCI, PLS LICENSE NO. L-5023 DATED MAY 15, 2020 (DOC. NO. 370A-D001), AVAILLABLE AERIAL INFORMATION USING IMAPS GIS, TREE SURVEYS CONDUCTED BY SOIL & ENVIRONMENTAL CONSULTANTS, PS./LEAF & LIMB ON 2/26/2022 (SITE) AND 4/23/2024 (FRONTAGE/ROW)



SCHEMATIC DESIGN SET
FEBRUARY 2026

NO.	REVISION	DATE

OVERALL SITE PLAN
PROJECT TITLE
WAKE COUNTY WEST WAKE SOLID WASTE FACILITY

CLIENT
WAKE COUNTY
FACILITIES DESIGN & CONSTRUCTION
P.O. BOX 550 RALEIGH, NC 27602

SCS ENGINEERS, PC
STEARNS, CONRAD AND SCHMIDT
CONSULTING ENGINEERS, INC.
3801 LAKE BOONE TRAIL SUITE 410 - RALEIGH, NC 27807
PH: (919) 862-2616
PROJ. NO.: 02199-312-20
DATE: 02/20/26

CADD FILE: SCHEMATIC DESIGN
DATE: FEB. 2026
SCALE: AS SHOWN
DRAWING NO.: C-3.0
SHEET XX of XX