

2026 Proposed School Bond Program

Wake County Public School System

Wake County Board of Commissioners

July 6, 2026

David Burnett

Assistant Superintendent

Facilities Design and Construction



2026 Proposed School Bond Program Presentation Summary

- Overview of WCPSS's 7-Year Capital Improvement Program
- Proposed School Bond Program Priorities
- Proposed School Bond Funding
- Proposed Major School Bond Projects and Program Requirements
- Questions

WCPSS 7-Year Capital Improvement Program Overview

- 7- Year Strategic Plan for WCPSS Capital Improvements for new school construction, renovation/replacement of existing schools, and school program requirements
- Defines project priorities, schedules, and funding requirements
- Supports WCPSS Educational Programs, Goals, and Commitments

WCPSS 7-Year Capital Improvement Program FY 2027- FY 2033

Capital Improvement Program Totals

School or Program Item	7-Year CIP							FY27 - FY33 Totals
	FY 27	FY 28	FY 29	FY 30	FY 31	FY 32	FY 33	
	2026 SCHOOL BOND							
New Schools	60,622,344	70,326,227	72,876,944	23,000,000	81,104,026	110,644,026	0	418,573,567
Existing Schools	189,748,675	164,434,469	165,252,684	208,592,745	168,684,510	96,300,000	210,695,000	1,203,708,083
Program Requirements- Debt Funded	98,000,000	101,602,311	105,507,365	110,778,093	114,422,159	117,457,558	120,805,827	768,573,313
Program Requirements- Cash Funded	72,200,000	74,727,000	77,603,990	78,009,713	80,690,039	82,922,669	85,385,427	551,538,838
FY 2027 - FY 2033 CIP Totals	420,571,019	411,090,007	421,240,983	420,380,551	444,900,734	407,324,253	416,886,254	2,942,393,801

Proposed School Bond Program Priorities

FY 2028 & FY 2029

- Emphasis on Renovation/Replacement of Existing Schools (9 Schools)
- Design/Construction of three (3) New Schools in County Growth Areas
- Increased Funding for Building Lifecycle Replacements
- Initiate Funding for School Modernization Projects
- Funding to Continue Districtwide Comprehensive Security Improvements
- Partially Fund District Strategic Project (Transportation Center)*

*Subject to BOE Approval

Proposed School Bond Program Funding

School Bond Program (FY 2028 & FY 2029)

\$143.2 M	New Schools
\$329.7 M	Renovation/ Replacement of Existing Schools
<u>\$359.4 M</u>	Program Requirements
\$832.3 M	Total

Wake County Funding (FY 2028 & FY 2029)

\$680.0 M	Bond
<u>\$152.3 M</u>	Cash
\$832.3 M	Total

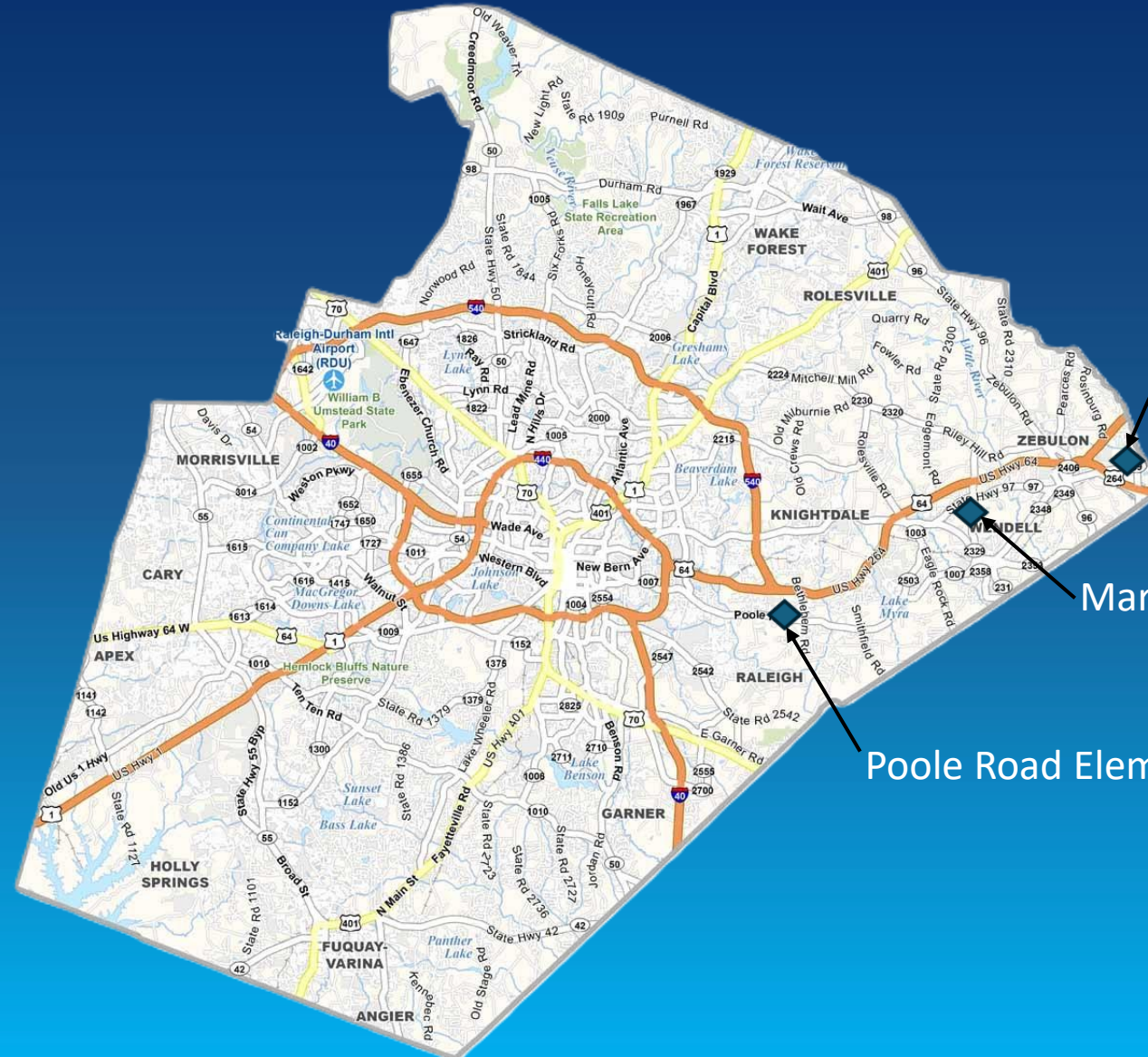
Proposed Major School Bond Project (FY 2028 & FY 2029)

New Schools- \$143.2 M

<u>Amount</u>	<u>Project</u>	<u>Funding Type</u>
• \$ 7.0 M	Little Creek Elementary	Design
• \$ 70.3 M	Marshburn Road Elementary	Construction
• \$ 65.9 M	Poole Road Elementary	Construction

Proposed Major School Bond Projects

New Schools

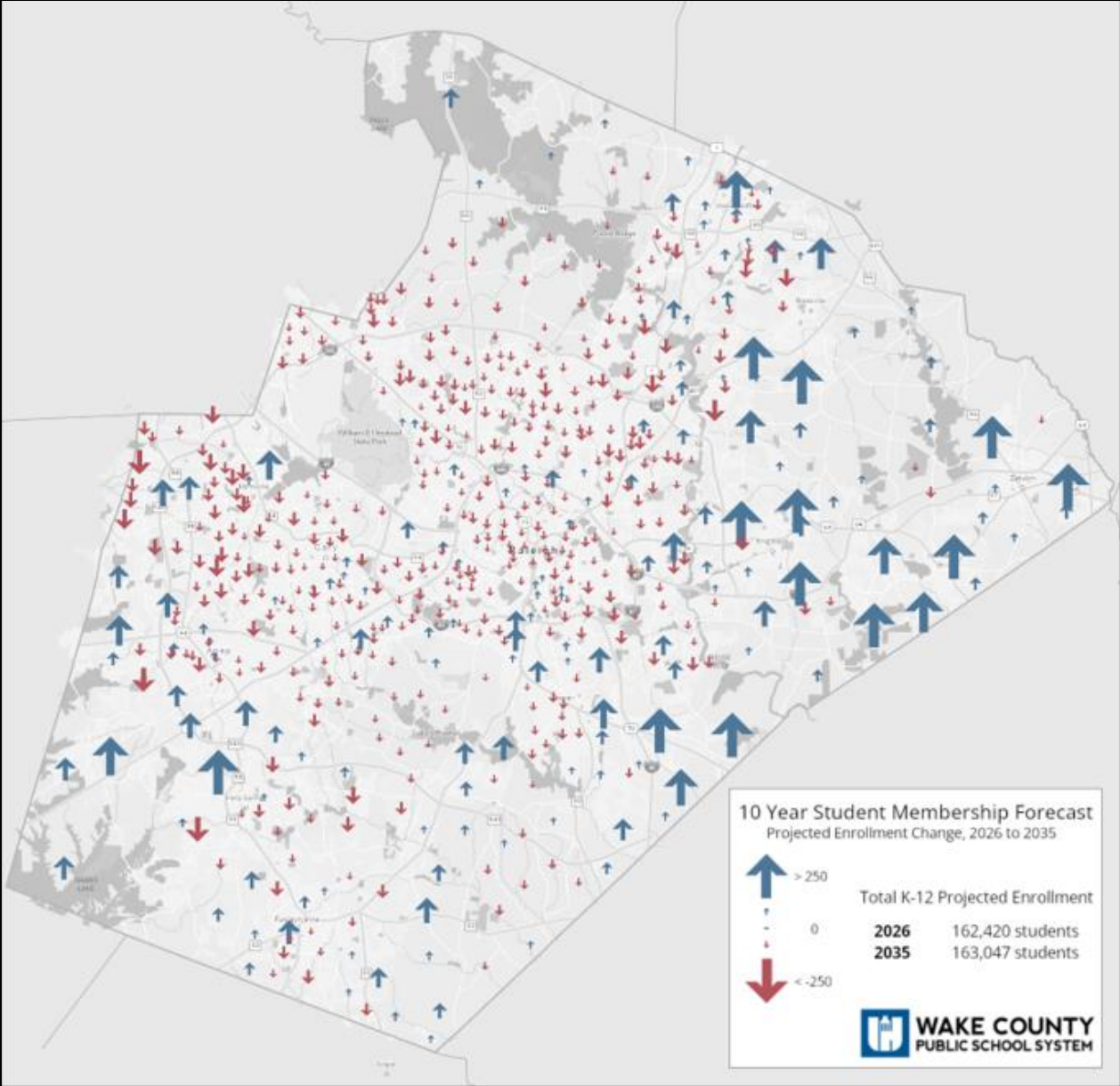


Little Creek Elementary

Marshburn Road Elementary

Poole Road Elementary

Projected K-12 Enrollment Change: 2026 to 2035



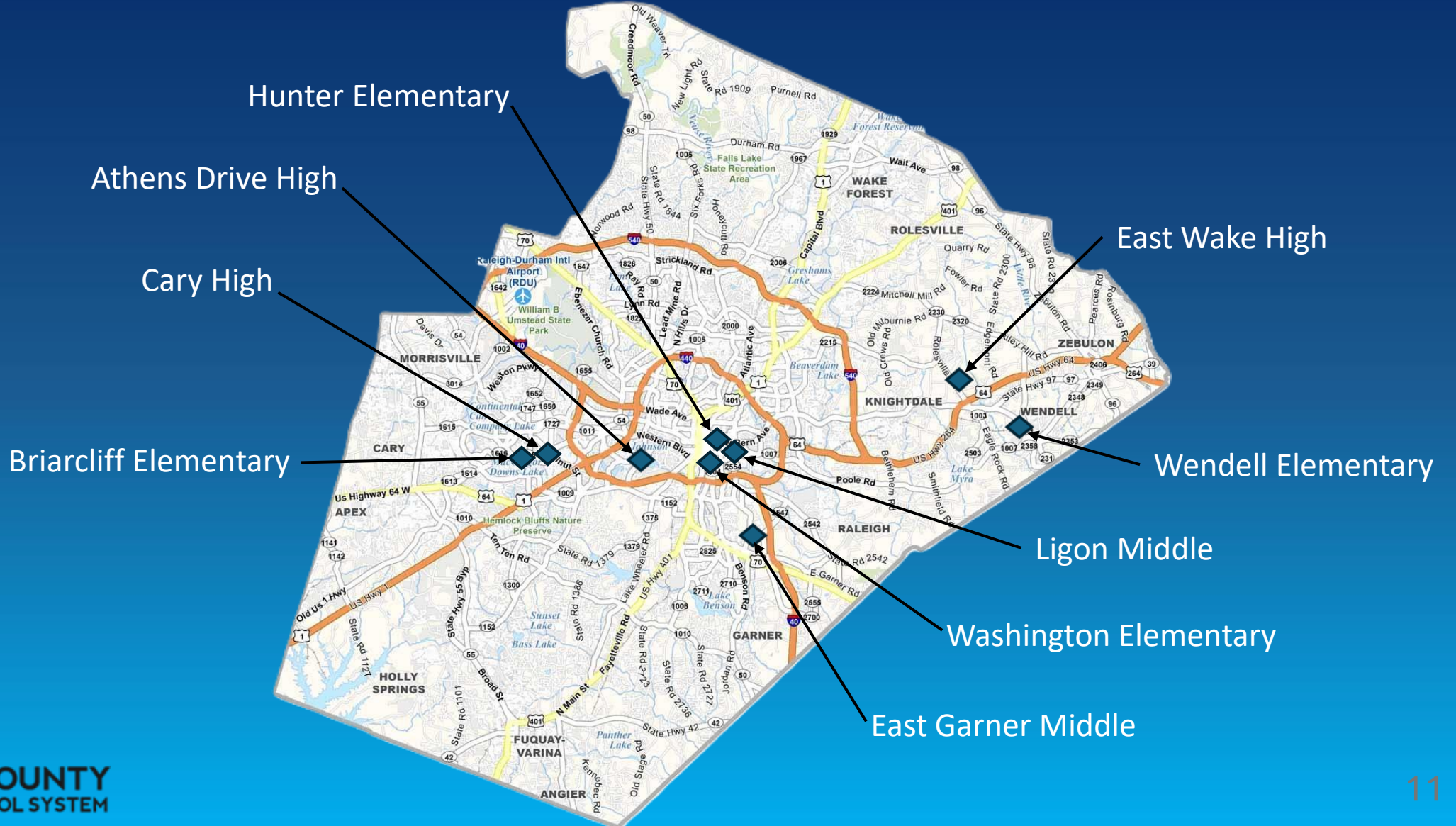
Proposed Major School Bond Project (FY 2028 & FY 2029)

Renovation or Replacement of Existing Schools- \$329.7M + \$28.5 M (PRIMP)

<u>Amount</u>	<u>Project</u>	<u>Funding Type</u>
• \$ 6.3 M	Washington Elementary	Design
• \$ 6.5 M	Wendell Elementary	Design
• \$ 14.4 M	East Wake High	Design
• \$ 4.5 M	Briarcliff Elementary	Construction
• \$ 28.5 M	Hunter Elementary	Construction (PRIMP)
• \$ 76.8 M	East Garner Middle	Construction
• \$133.4 M	Ligon Middle	Construction
• \$ 2.2 M	Athens Drive High	Construction
• \$ 85.6 M	Cary High	Construction

Proposed Major School Bond Projects

Renovation or Replacement of Existing Schools



Proposed Bond Program Requirements (FY 2028 & FY 2029)

School Program Requirements- \$359.4 M

<u>Amount</u>	<u>Program Requirement</u>	<u>Description</u>
• \$ 98.7 M	Lifecycle- Building Components	Replacement of School Building Systems & Equipment
• \$ 5.1 M	Lifecycle- Furniture & Equipment	Replacement of School Furniture & Playgrounds
• \$ 8.9 M	Educational Equipment	Replacement of Science Lab Equipment, Career & Technical Equipment (CTE), Performing Arts Stage, Equipment, and Activity Buses
• \$ 7.0 M	Environmental & ADA	Remediation Projects (Asbestos, Lead, Underground Storage Tanks, Mold), ADA Accommodation Requests & Compliance

Proposed Bond Program Requirements (FY 2028 & FY 2029)

School Program Requirements- \$359.4 M

<u>Amount</u>	<u>Program Requirement</u>	<u>Description</u>
• \$ 6.5 M	Temporary Classrooms/ Mobiles	Removal, Relocation, & Major Repairs of Temporary Classrooms/ Mobiles
• \$ 42.5 M	Partial Renovation Improvement Projects (PRIMP)	Renovation of Existing Schools to Current Building Standards
• \$ 21.3 M	Program Contingency	CIP Construction Project Cost Increases & Escalation
• \$ 21.3 M	Program Management	CIP Program & Project Management
• \$ 64.8 M	Technology Devices & Infrastructure	Student & Staff Computers, School Network Infrastructure Improvements

Proposed Bond Program Requirements (FY 2028 & FY 2029)

School Program Requirements- \$359.4 M

<u>Amount</u>	<u>Program Requirement</u>	<u>Description</u>
• \$ 17.4 M	Security	Security Equipment Improvements
• \$ 6.5 M	Temporary Classrooms/ Mobiles	Removal, Relocation, Major Repairs of Temporary Classrooms/ Mobiles
• \$ 1.3 M	Assessments	Facilities Condition Evaluations
• \$ 27.4 M	Land/ Property Acquisition	Property purchases for schools, Administration, or Support Facilities
• \$ 37.3 M	Space Needs Analysis & Prioritization (SNAP)	i. e. Non-Traditional Instructional & Operational Support Needs

Proposed Bond Program Requirements (FY2028 and FY 2029)

Lifecycle Building Components Projects

• Building System Replacements	HVAC Large/ Plants	at 4 Schools
	Fire Alarms	at 15 Schools
	HVAC	at 11 Schools
	Chillers	at 5 Schools
	Boilers	at 8 Schools
	Controls	at 8 Schools
	Elevators/Lifts	at 6 Schools
	Envelope/Roof	at 11 Schools
	Intercom	at 2 Schools
• Site/ Athletic Related Replacements	Tracks	at 3 Schools
	Tennis Courts	at 3 Schools
	Parking Lots	at 2 Schools

Proposed Bond Program Requirements (FY2028-29)

Partial Renovation Improvement Projects- PRIMP

Renovation / Replacement

Capital Improvement Projects that include replacement, addition, and/ or larger scale renovations

Modernization

Projects that work within the existing campus footprint to address aging materials, finishes, and/ or building systems

Minor

Smaller scope, lower cost, shorter duration projects

Major Renovation

- Hunter ES

Modernization

- Wake Forest ES

Minor

- Adams ES - Drainage improvements

Proposed Bond Program Requirements (FY2028 & FY 2029)

Space Needs Analysis & Prioritization Projects- SNAP

Major

Capital Improvement Projects that include replacement, addition, and/or larger scale renovations

Major

Rock Quarry Road Central Services Renovation

- New Bus Garage

Minor

Smaller scope, lower cost, shorter duration projects

Minor

- Broughton HS - Softball Field
- Rock Quarry Road - Purchasing Warehouse Envelope Repair

Questions

Appendix

WCPSS 7-Year Capital Improvement Program FY 2027- FY 2033

New Schools

School or Program Item	Scheduled Completion	Previous Yrs. Funding	7-Year CIP							FY27 - FY33 Totals	Project or Program Totals
			FY 27	FY 28	FY 29	FY 30	FY 31	FY 32	FY 33		
New Schools			2026 BOND PROGRAM								
Parkside MS/ Wake Early College for Information and Biotechnologies (WECIB)	2029	84,221,000	55,122,344							55,122,344	139,343,344
Marshburn Rd ES	2029	5,500,000		70,326,227						70,326,227	75,826,227
Poole Rd ES	2030		5,500,000		65,876,944	16,000,000				87,376,944	87,376,944
Little Creek ES	2032				7,000,000		81,104,026			88,104,026	88,104,026
New ES TBD 1	2033					7,000,000		85,104,026		92,104,026	92,104,026
New MS TBD 1	2035							9,100,000		9,100,000	129,300,000
New HS TBD 1	2037							16,440,000		16,440,000	290,440,000
New Schools Subtotal		89,721,000	60,622,344	70,326,227	72,876,944	23,000,000	81,104,026	110,644,026	0	418,573,567	902,494,567

WCPSS 7-Year Capital Improvement Program FY 2027- FY 2033

Renovation/Replacement of Existing Schools

School or Program Item	Scheduled Completion	Previous Yrs. Funding	7-Year CIP							FY27 - FY33 Totals	Project or Program Totals
			FY 27	FY 28	FY 29	FY 30	FY 31	FY 32	FY 33		
Existing Schools			2026 BOND PROGRAM								
Lockhart ES	2027	63,404,367	17,602,243							17,602,243	81,006,610
Brentwood ES	2027	48,950,000	25,047,485							25,047,485	73,997,485
Athens Drive HS	2028	14,042,090	74,798,947	2,198,947						76,997,894	91,039,984
Briarcliff ES	2028	5,555,000	66,000,000	4,535,522						70,535,522	76,090,522
East Garner MS	2029	5,500,000		74,400,000	2,352,573					76,752,573	82,252,573
Ligon MS	2029	7,293,468		69,500,000	63,900,111					133,400,111	140,693,579
Cary HS	2031		6,300,000		85,600,000	13,300,839				105,200,839	105,200,839
Wendell ES	2031			6,500,000		81,091,906				87,591,906	87,591,906
Washington ES	2032				6,300,000		53,918,842			60,218,842	60,218,842
East Wake HS	2032			7,300,000	7,100,000	107,900,000	92,915,668			215,215,668	215,215,668
Existing School TBD 1	2033					6,300,000		76,800,000		83,100,000	83,100,000
Zebulon MS	2034						8,850,000		130,095,000	138,945,000	138,945,000
Existing School TBD 2	2034						6,500,000		40,300,000	46,800,000	86,900,000
Existing School TBD 3	2034						6,500,000		40,300,000	46,800,000	86,900,000
Existing School TBD 4	2035							6,500,000		6,500,000	90,700,000
Existing School TBD 5	2036							6,500,000		6,500,000	90,700,000
Existing School TBD 6	2036							6,500,000		6,500,000	90,700,000
Existing Schools Subtotal		144,744,925	189,748,675	164,434,469	165,252,684	208,592,745	168,684,510	96,300,000	210,695,000	1,184,208,083	1,681,253,008

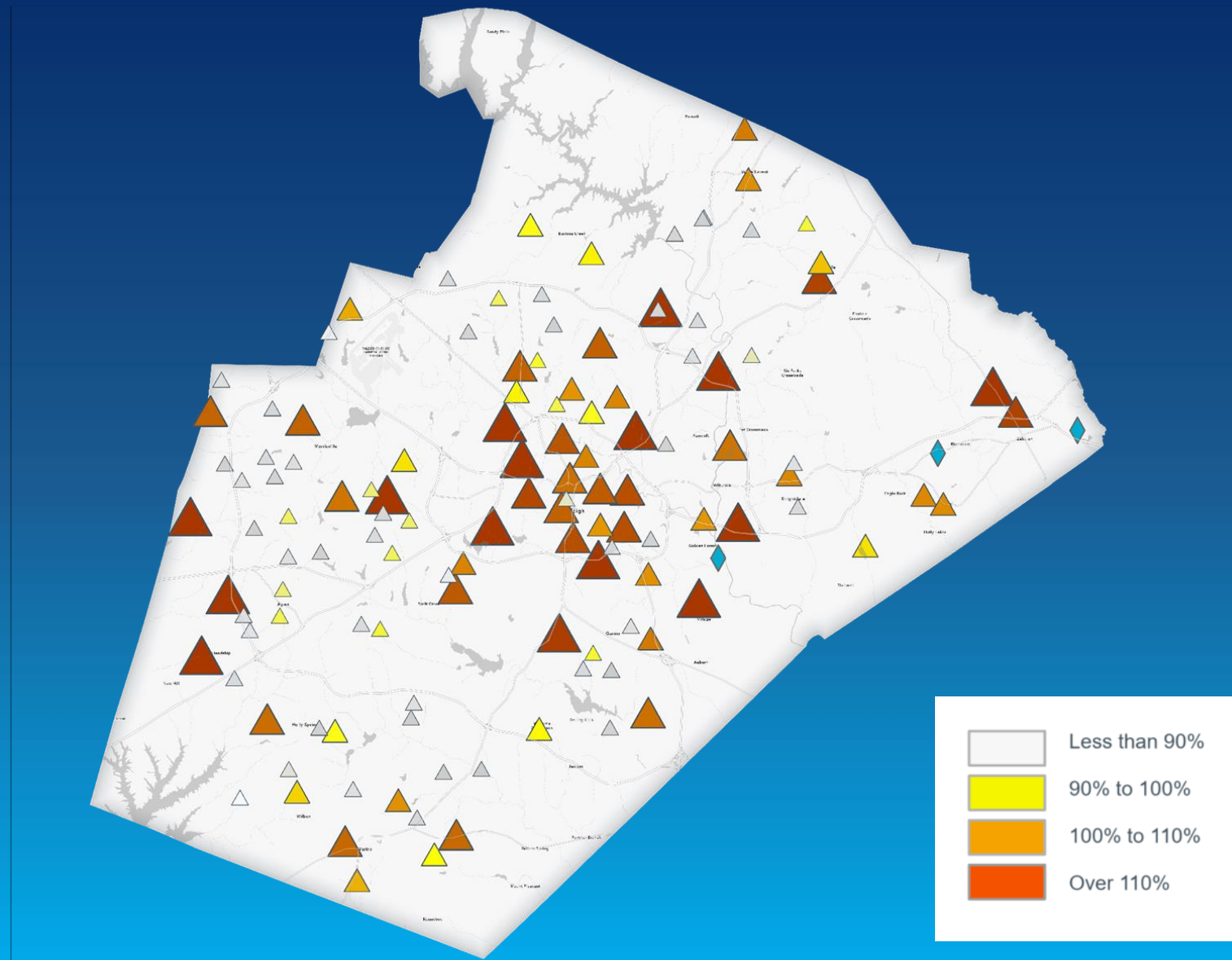
WCPSS 7-Year Capital Improvement Program

FY 2027- FY 2033

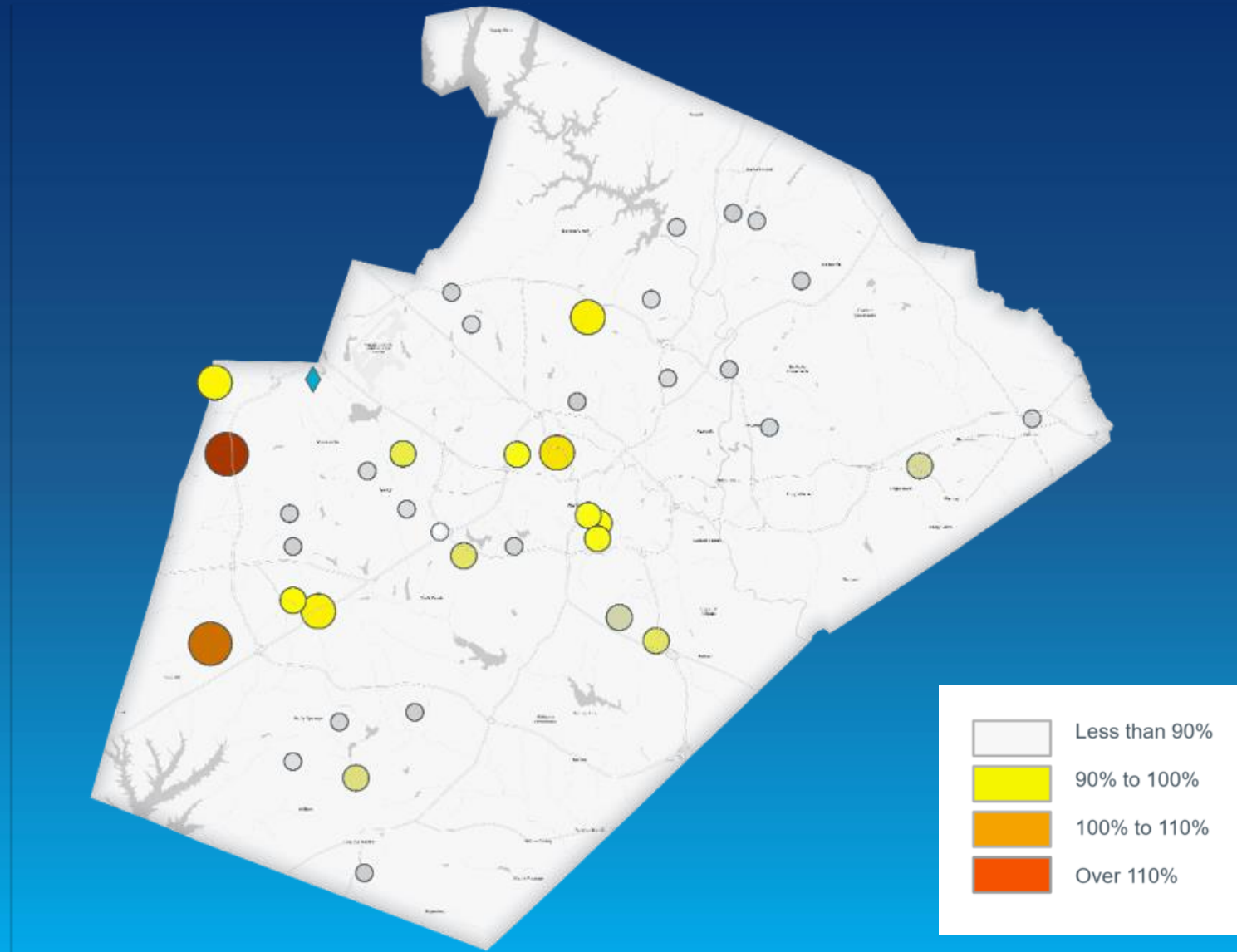
Programming Requirements

School or Program Item	7-Year CIP							FY27 - FY33 Totals
	FY 27	FY 28	FY 29	FY 30	FY 31	FY 32	FY 33	
Program Requirements- Debt Funded		2026 SCHOOL BOND						
Life Cycle Building Components	46,800,000	48,438,000	50,302,863	51,862,252	53,599,637	55,046,827	56,643,185	362,692,764
Life Cycle Furniture	2,400,000	2,484,000	2,579,634	2,659,603	2,748,699	2,822,914	2,904,779	18,599,629
Educational Equipment	4,200,000	4,347,000	4,514,359	4,654,305	4,810,224	4,940,100	5,083,363	32,549,351
Environmental/ ADA	1,300,000	1,345,500	1,397,302	3,440,618	3,488,879	3,529,079	3,573,422	18,074,800
Temporary Classrooms/ Mobiles	3,100,000	3,208,500	3,332,027	3,435,320	3,550,403	3,646,264	3,752,006	24,024,520
Partial Renovation Improvement Projects- PRIMP	20,000,000	20,872,311	21,669,260	22,341,007	23,089,431	23,712,846	24,400,518	156,085,373
Program Contingency	10,100,000	10,453,500	10,855,960	11,192,494	11,567,443	11,879,764	12,224,277	78,273,438
Program Management	10,100,000	10,453,500	10,855,960	11,192,494	11,567,443	11,879,764	12,224,277	78,273,438
Program Requirements- Cash Funded		2026 SCHOOL BOND						
Technology Devices	23,100,000	23,908,500	24,828,977	25,598,676	26,456,231	27,170,549	27,958,495	179,021,428
Technology Infrastructure	7,600,000	7,866,000	8,168,841	8,422,075	8,704,215	8,939,228	9,198,466	58,898,825
Environmental/ ADA	2,000,000	2,070,000	2,149,695	0	0	0	0	6,219,695
Security	21,400,000	8,589,000	8,804,176	8,984,106	9,184,574	9,351,557	9,535,752	75,849,165
Assessments	600,000	621,000	644,909	664,901	687,175	705,729	726,195	4,649,909
Land/ Property Acquisition	0	13,455,000	13,973,018	14,406,181	14,888,788	15,290,785	15,734,218	87,747,990
Space Needs Analysis & Prioritization -SNAP	17,500,000	18,217,500	19,034,374	19,933,774	20,769,056	21,464,821	22,232,301	139,151,826
Program Requirements Subtotal	170,200,000	176,329,311	183,111,355	188,787,806	195,112,198	200,380,227	206,191,254	1,320,112,151

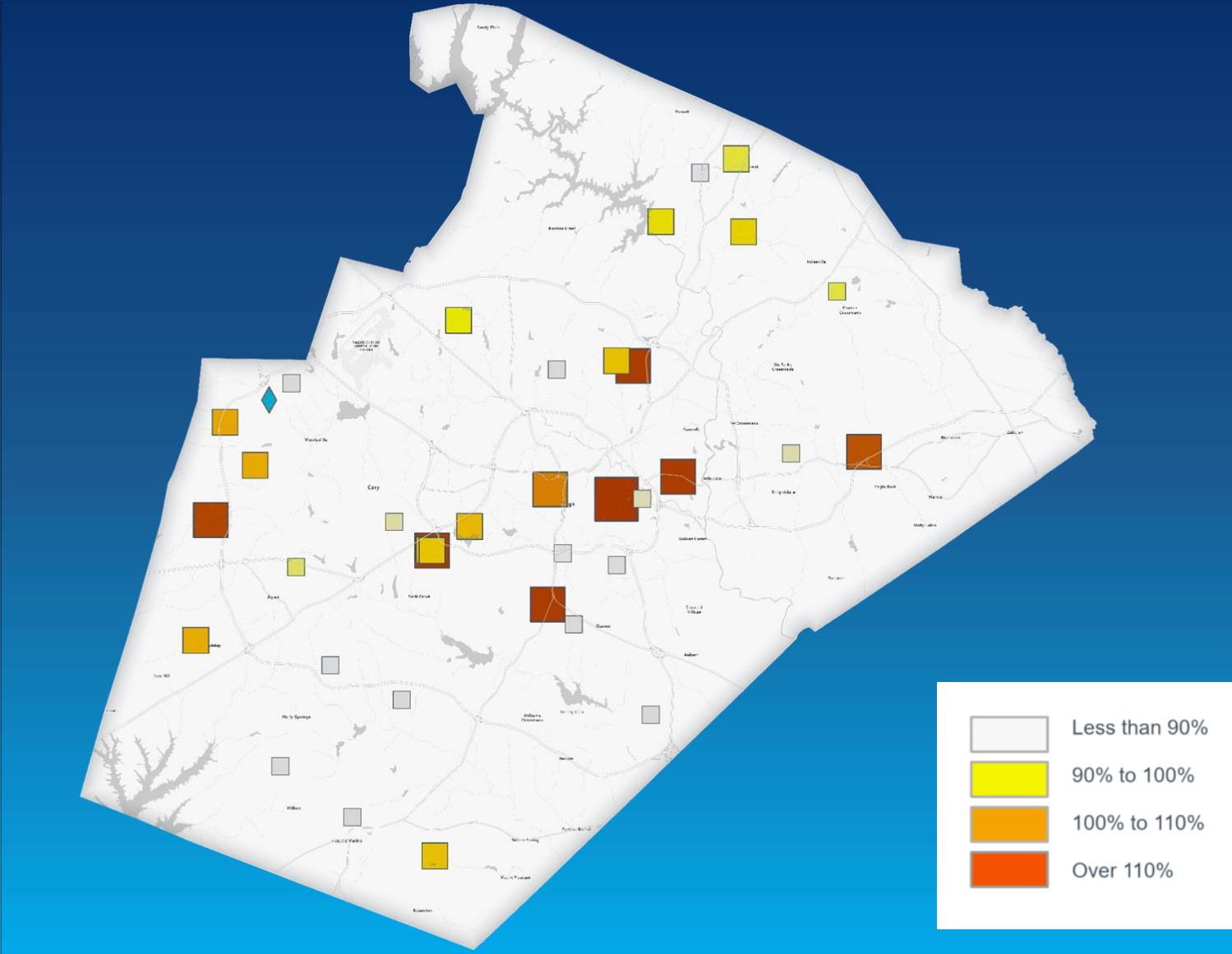
Projected Elementary School Crowding: 2026 - 2027



Projected Middle School Crowding: 2026 - 2027



Projected High School Crowding: 2026 - 2027



Proposed FY 2028 & FY2029 Lifecycle Bond Projects

\$98.7 M Bond Debt Funded

HVAC Large / Plant (4)

Hilburn ES
Penny Road ES
Oak Grove ES
Olds ES

HVAC (11)

Adams ES
Bugg ES
Knightdale ES
Lynn Road ES
Reedy Creek ES
Carroll MS
East Millbrook MS
Lufkin Road MS
Mount Vernon MS
Millbrook HS
Sanderson HS

Boilers (8)

Knightdale ES
Reedy Creek ES
Root ES
East Cary MS
East Millbrook MS
Lufkin Road MS
River Oaks MS
Sanderson HS

Chiller (5)

Reedy Creek ES
East Cary MS
East Millbrook MS
Lufkin Road MS
Millbrook HS

Controls (8)

Adams ES
East Garner ES
Knightdale ES
Lake Myra ES
Root ES
Herbert Akins MS
River Oaks MS
Sanderson HS

Proposed FY 2028 & FY 2029 Lifecycle Bond Projects

\$98.7 M Bond Debt Funded

Elevators/Lift (6)

Apex ES
Baileywick ES
Cary ES
Centennial MS
West Lake MS
Wake Forest HS

Fire Alarm (15)

Apex ES
Ballentine ES
Carpenter ES
Cary ES
East Cary ES
Forestville Road ES
Millbrook ES
Northwoods ES
Spring Forest ES
Partnership ES
Powell ES
Salem ES
Yates Mill ES
Mount Vernon MS
Knightdale HS

Intercom (2)

Olds ES
Lufkin Road MS

Roof (11)

Adams ES
Buggs ES
Olds ES
Poe ES
Root ES
Carroll MS
Carnage MS
Centennial MS
Knightdale HS
Holly Springs HS
Millbrook HS

Proposed FY 2028- 2029 Lifecycle Bond Projects

\$98.7 M Bond Debt Funded

Tracks (3)

Carroll MS

East Cary MS

Sanderson HS

Tennis Courts (3)

Holly Springs HS

Leesville HS

Millbrook HS

Parking Lot Asphalt Repair/Resurface (2)

Apex ES

Dillard Drive MS

School Closures 2020-2026

Due to Heat/ HVAC Issues

<u>School Year</u>	<u>Closures</u>	<u>Delays/ Early Dismissals</u>
2020-21	0	1
2021-22	0	3
2022-23	1	6
2023-24	8	35
2024-25	4	40
2025-26 (6/9/2026)	1	8