

# Affordable Housing Committee Meeting

Monday, June 22, 2026



@wakegov    

wake.gov



# Cornerstone Pilot Program





**Erin Yates, Permanent Housing and Supportive  
Services Division Director**

# Cornerstone Center

- 20 units for people experiencing chronic homelessness with physical and mental health needs
- Crisis intervention, clinical assessments and treatment, workforce development and case management provided on-site
- First residents moved-in on February 26, 2024
- **36 people housed!**



# Wake County Strategic Plan Alignment

 Community Health and Wellbeing	 Growth, Land Use and Environment	 Inclusive Prosperity
 Lifelong Learning	 Safer Community Together	 Foundations of Service

In April 2024, Wake County's Strategic Plan called for a strengthened partnership between the Re-entry & Housing Stability.

# People leaving incarceration:

**7-13 times more likely** to experience homelessness

Up to **5 times less likely** to receive health treatment

**4 times more likely** to face unemployment

# Cornerstone is a SOLUTION

## Current

- Ending homelessness
- Residents who have been homeless for 1+ year
- Residents living with disabling health and mental health conditions
- 20+ hours of supportive services

## Opportunity

- HUD is expanding funding Transitional Housing
- Wake County prioritizing re-entry
- 20+ hours of supportive services
- Improved partnerships with CAWD, LRC to expand workforce opportunities

# Cornerstone Pilot

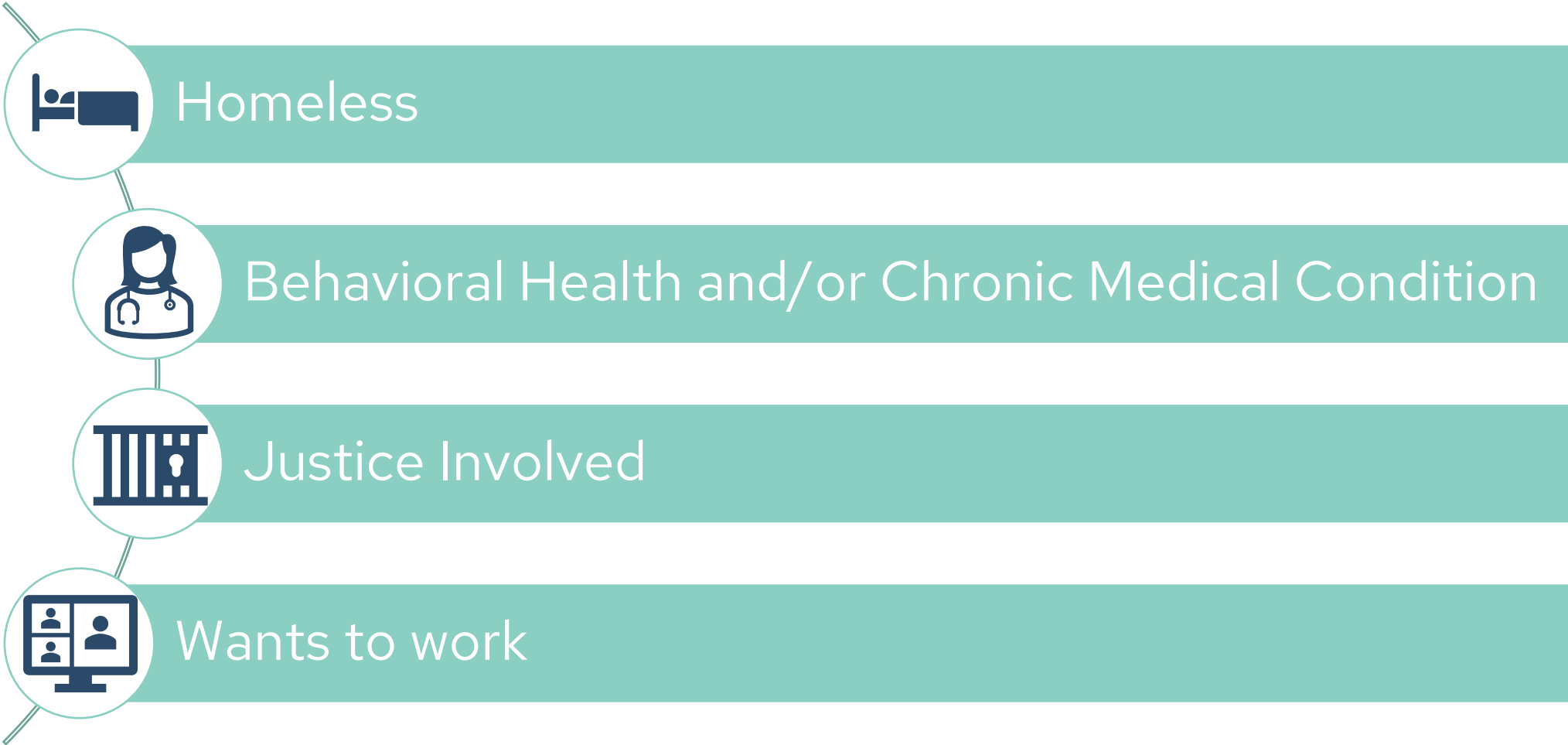


Partnership with Capital Area  
Workforce Development, LRC and  
The Great Raleigh Clean Up



10 Cornerstone Units

# Cornerstone Pilot Criteria



# What does “Justice Involved” mean?

## **Justice-Involved (Pilot Definition):**

An individual is considered justice-involved if they are currently or have been within the past 24 months engaged with the criminal legal system, including incarceration (jail or prison), probation, parole, or active criminal charges, and where such involvement contributes to barriers to securing or maintaining stable housing.

# What does “Justice Involved” NOT mean?

## Justice-Involved Exclusion (Pilot Definition):

- No longer “homeless” if incarcerated for longer than 90 days
- Not under pretrial release

# Pilot Supportive Services

- Currently have around 20 hours of groups and with a goal to increase to 40
- Expand current and create new partnerships:

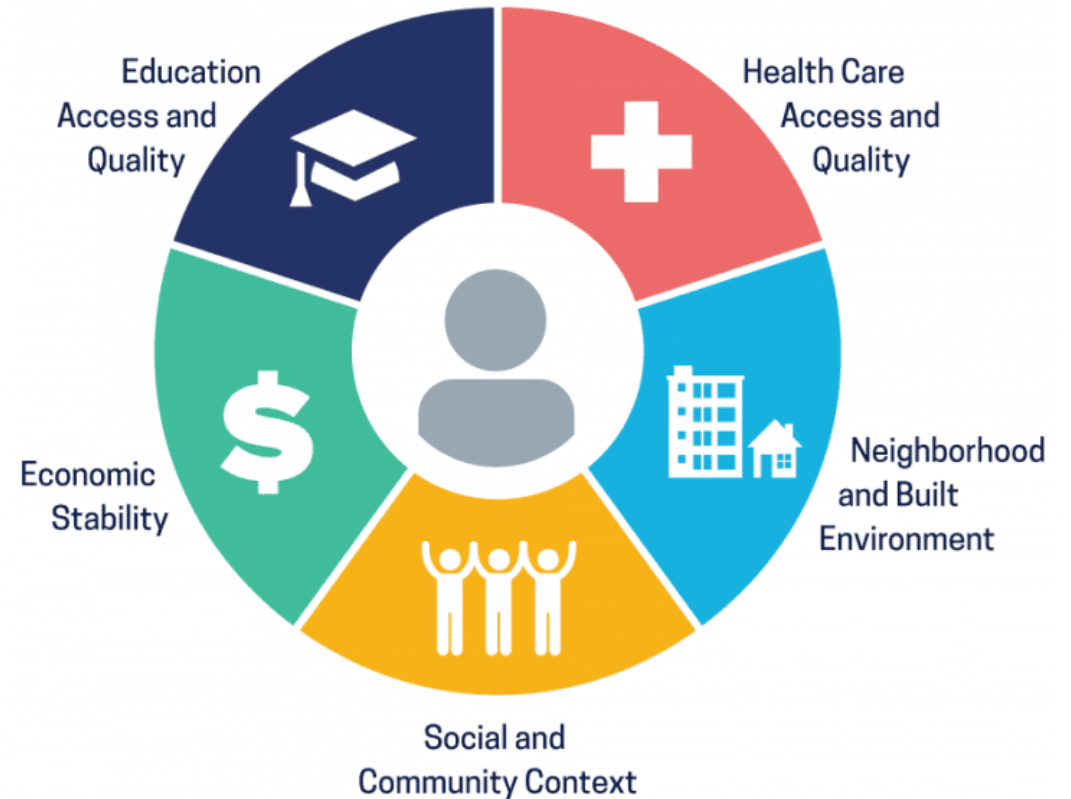


Social and Economic Vitality

# Expected Outcomes

## Cornerstone Pilot

- Obtain and maintain well-paying employment
- Increase income
- Address Social Drivers of Health for supports while in the program that will create long term stability
- Stable housing at exit
- 6 and 12-month follow ups



# Next Steps

- Pilot began March 2026 and extended through December
- Internally, creating formal MOUs with participating organizations and hosting joint meetings with community partners
- Goal is to have this be a program open to CoC, receiving referrals through Coordinated Entry
- Upon graduating the program, participants will have supports, employment and stable housing independent of vouchers

