

# Wake County Construction & Demolition (C&D) Debris Ordinance

**June 9, 2025**

John Roberson, Solid Waste Management Director



@wakegov    

wake.gov

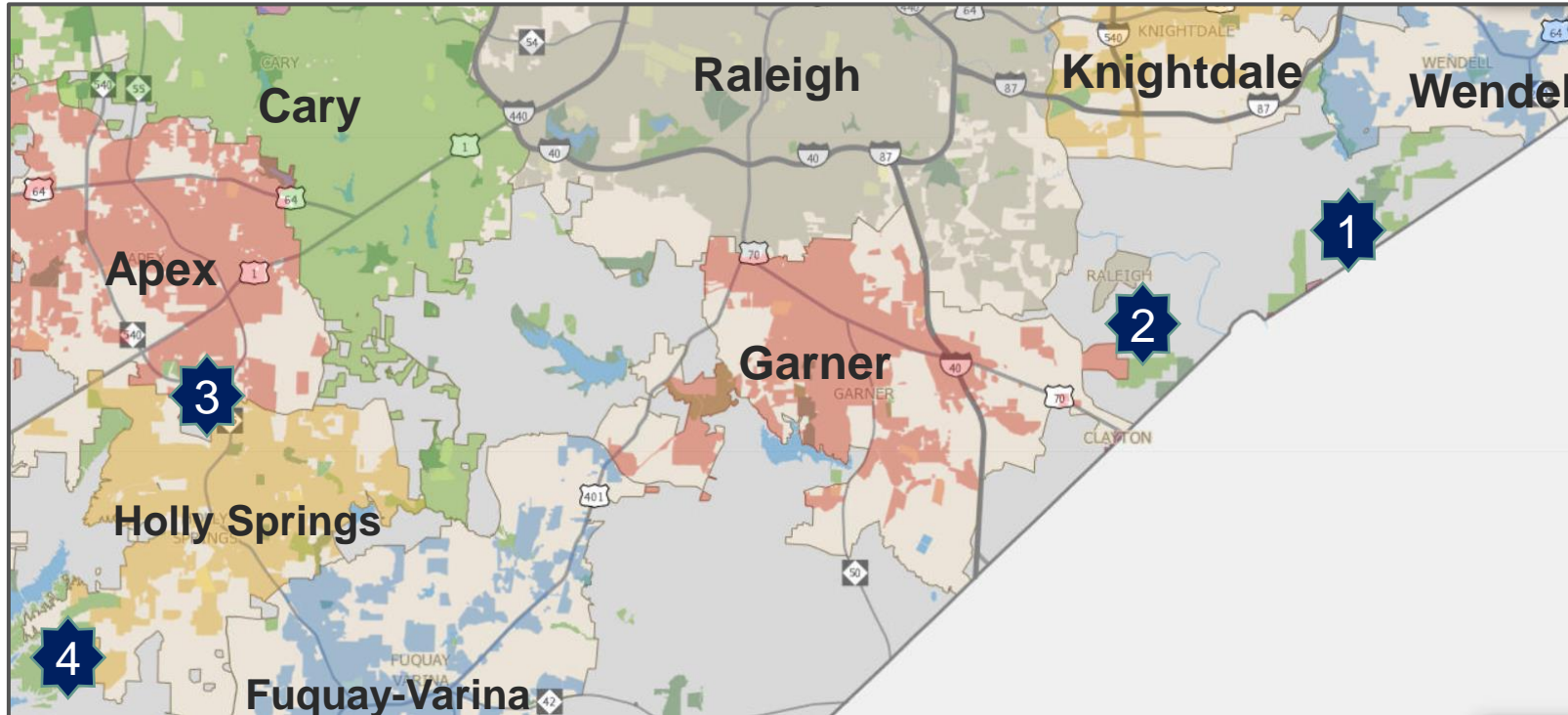
# Upcoming BOC Public Hearing

- Shotwell Environmental Park has requested a Public Hearing to consider a modification to their Construction & Demolition Debris Franchise – June 16<sup>th</sup>
- Today's briefing is to provide background on C&D Franchise Ordinance due to limited franchise modifications

# C&D vs MSW

- Construction & Demolition (C&D) Debris landfills have different design and operational standards than Municipal Solid Waste (MSW) landfills (such as our South Wake Landfill)
  - No household or commercial waste – only construction waste such as wood, metal, concrete, asphalt, and other construction materials.
  - Limited or no methane due to landfill contents
  - C&D landfills are not typically built with an impervious bottom liner/barrier
- Homebuilder/contractors make extensive use of the 4 C&D landfills in Wake County

# C&D Franchise Background



- Four C&D landfills in Wake County
  1. Shotwell
  2. Brownfield
  3. Greenway
  4. Red Rock
  - Initial franchises for all 4 were obtained in 2000-2003 when county closed publicly owned C&D facilities

# Status of Current C&D Franchises

FACILITY	ANNUAL THRESHOLD (Tons)	COUNTIES IN SERVICE AREA
1 - Shotwell	365,000	8
2 - Brownfield	401,500	16
3 - Greenway	300,030	8
4 - Red Rock	730,000	59

# Permitting versus Franchise

- NC Division of Environmental Quality (DEQ) is responsible for all landfill permitting under state/EPA guidelines/rules
- Wake County's C&D Franchise required:
  - Change maximum annual tonnage to be buried by the facility
  - Add locations (typically counties) from which waste can be received from
  - Significant changes to the facility's NC DEQ permit
- After BOC review, NC DEQ conducts permitting process to review/approve associated permit changes
- It is important to note that Wake County Planning reviews/approves zoning, special use permitting, etc.

# Franchise Modification Process

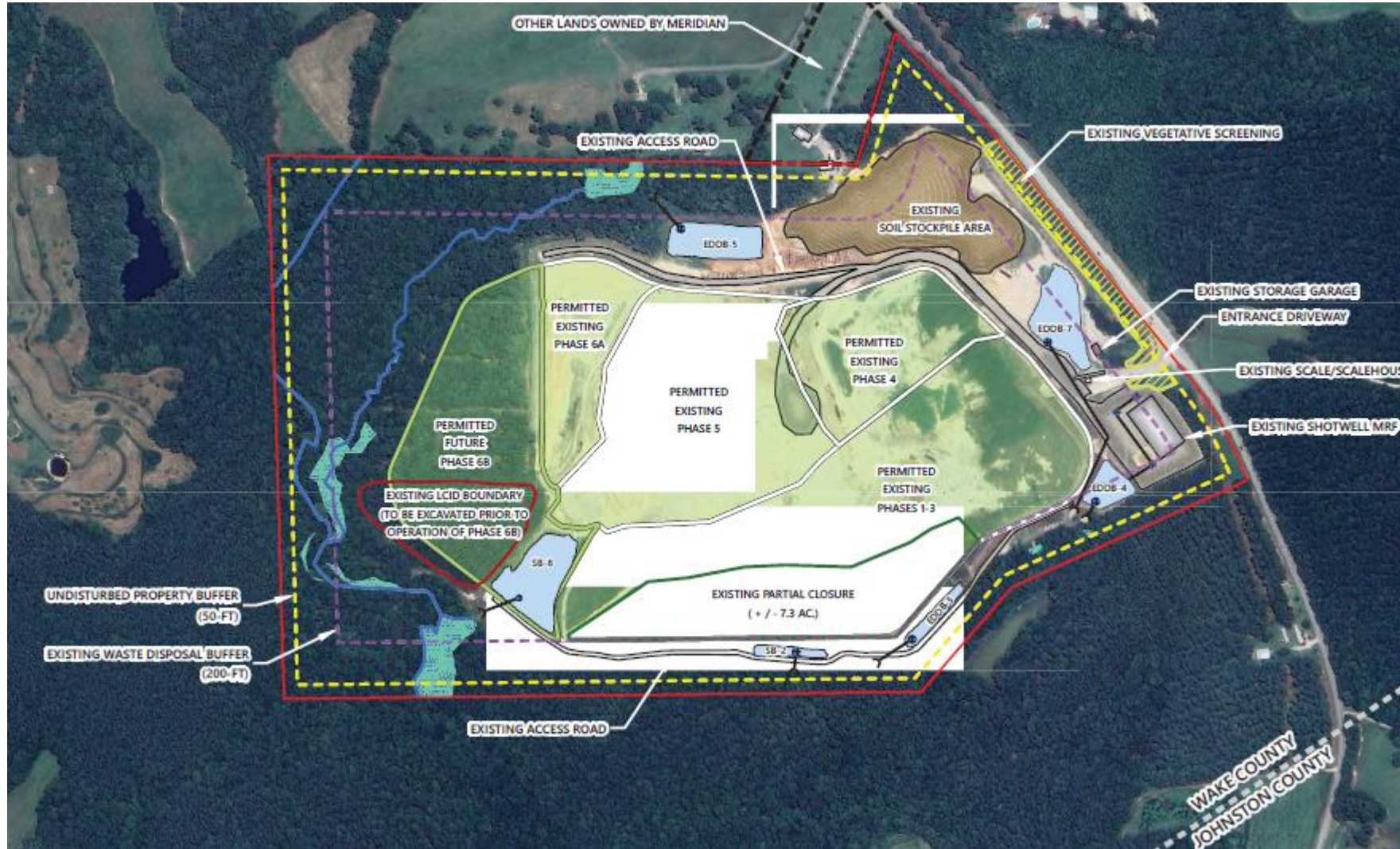
- Submittal of package to Wake County Solid Waste Division
- Date of public hearing is advertised
- Notice(s) are posted by proponent (on-site, newspaper & package placed at local library)
- Public Hearing via BOCC with first vote
- Comes back to BOCC after 30 days for a 2<sup>nd</sup> vote on Franchise Amendment (2 meeting requirement is a NCGS requirement)

# Prior Shotwell Franchise Modifications

- July 2000 – Approved initial franchise request.
- November 2003 – Approved amendment requesting an increase in tonnage threshold.
- September 2006 – Approved amendment to increase the franchise service area and disposal volume per year (to Wake and Johnston Counties with a maximum of 91,250 tons/year)
- Shotwell (under prior ownership) attempted twice to revise tonnage and failed – 2011 and 2016
- May 2022 (under new ownership) – Approved request to increase annual tonnage disposal volume (365,000), add six counties (Durham, Granville, Franklin, Nash, Harnett and Chatham) to the service area and construct a material recovery facility (MRF) to recycle construction and demolition waste

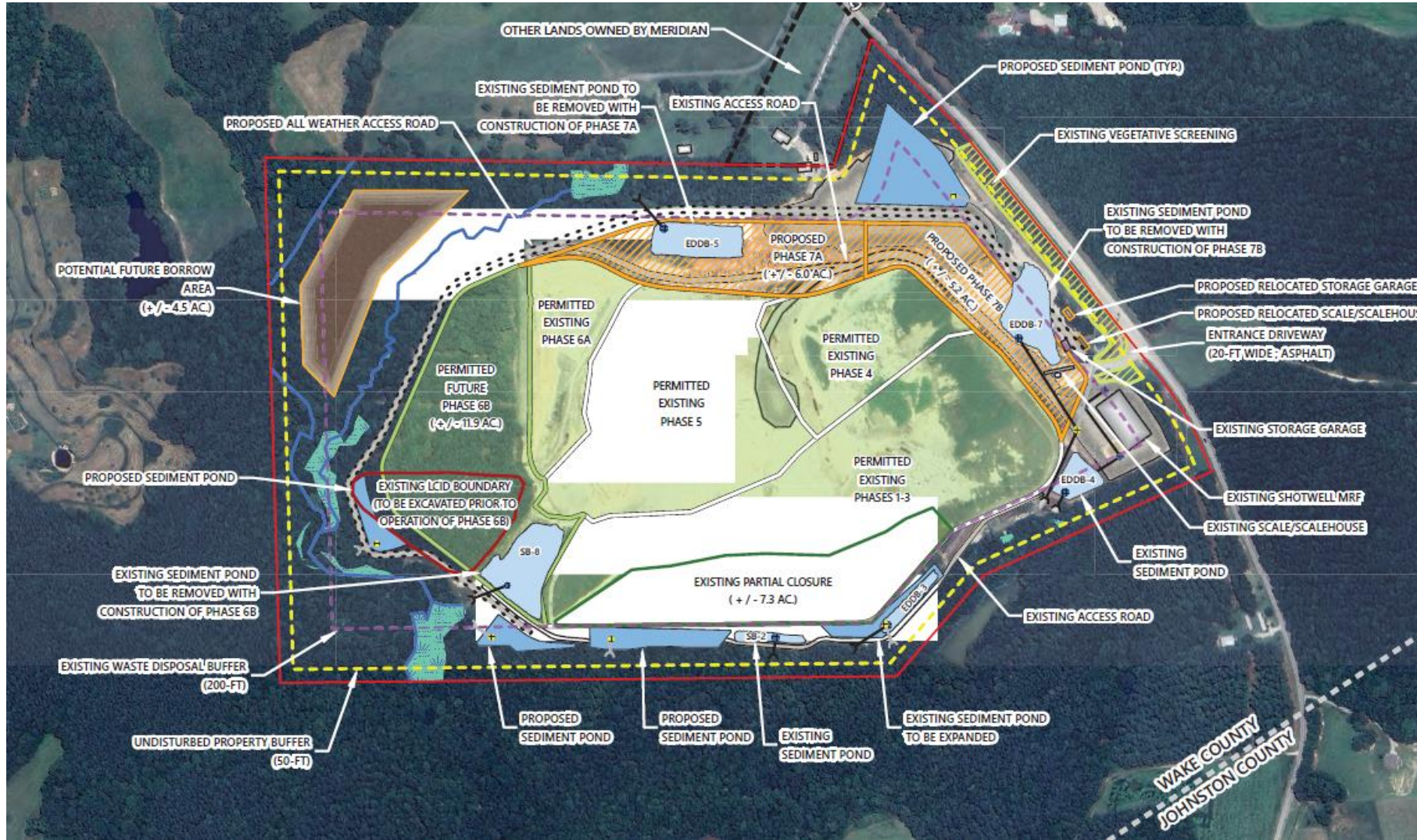


# Current Shotwell Request (Existing Site)





# Current Shotwell Request (Proposed)



- Proposed lateral expansion of landfill by 11.25 acres
- Orange hatching represents proposed area
- Improvements to occur on existing property – no additional property needed
- Item advertised in N&O, sign placed at front of site and documents placed in Wendell library per Ordinance

# Subsequent Processes

- If approved by BOC
  - New/amended Special Use Permit must be issued by Wake's BOA
  - New "substantial amendment" permit required by NC DEQ
- As part of this permit review, NC DEQ can request additional information as follows:
  - Additional environmental assessment
  - Traffic study
  - Environmental justice review
  - Financial assurance requirements
  - Others



# Questions and Discussion