

Wake / Harnett County Boundary Line

October 15, 2018



@wakegov    

wakegov.com

What is the problem?

- It is common across NC for county boundary lines to be uncertain
- Today's technology can locate boundary lines much more precisely and uncover discrepancies
- Urbanizing counties tend to discover more issues as development occurs across jurisdictional lines

Why resolve the issue?

Boundary line uncertainties create jurisdictional issues

- Which county is the property listed for taxes
- Where will they apply for building permits and other development services
- Who will respond during a 911 emergency
- Which elected officials will represent them and where will they vote
- What school system will they attend

Example Issue



1-3-14

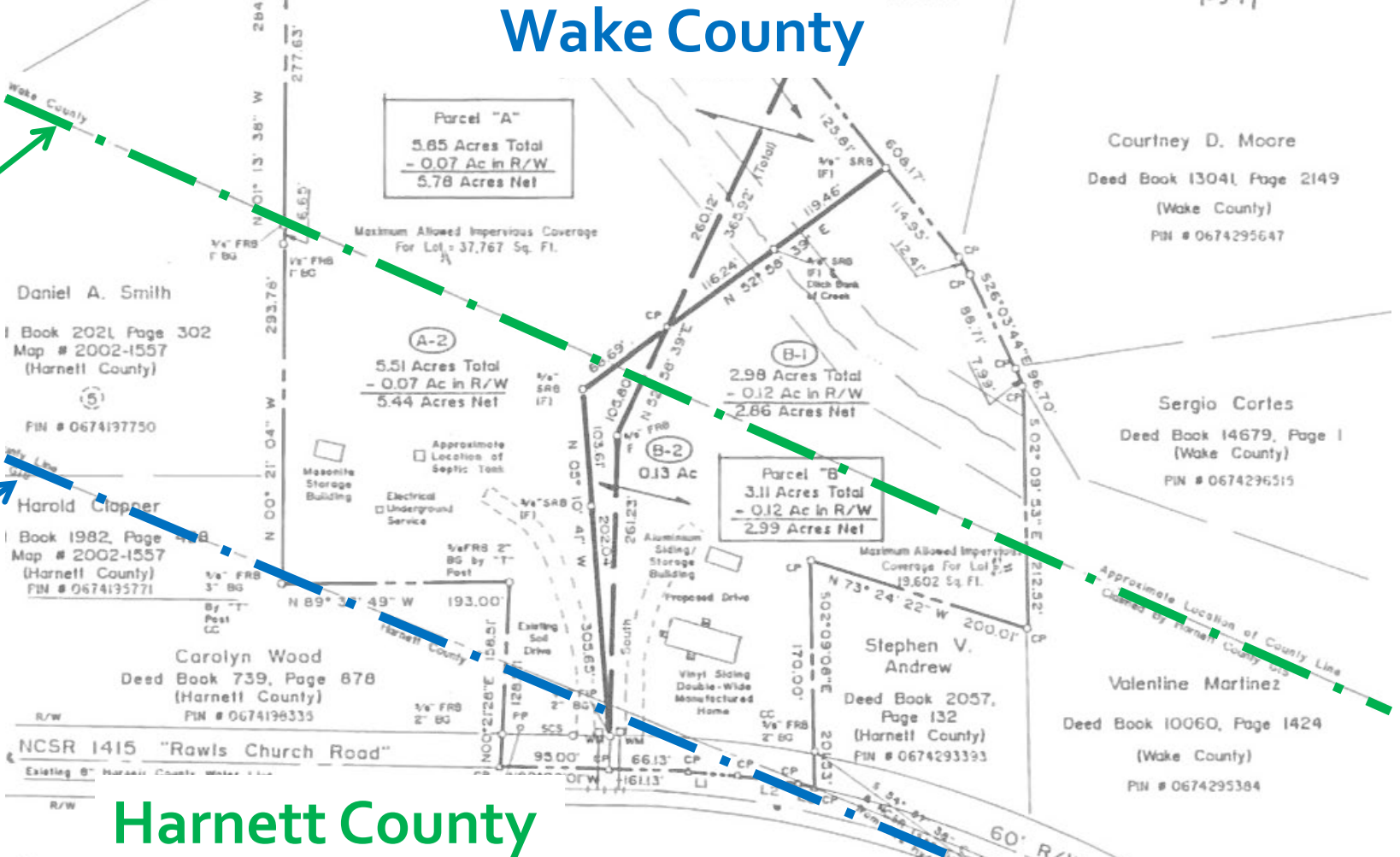
Lynwood Daniel & Others
Deed Book 14553, Page 146
Book of Maps 1989, Page 11909
(Wake County)
PIN # 0675104273

William D. Hawley
Deed Book 11345, Page 1321
(Wake County)
74293940

Wake County

Harnett County Version

Wake County Version



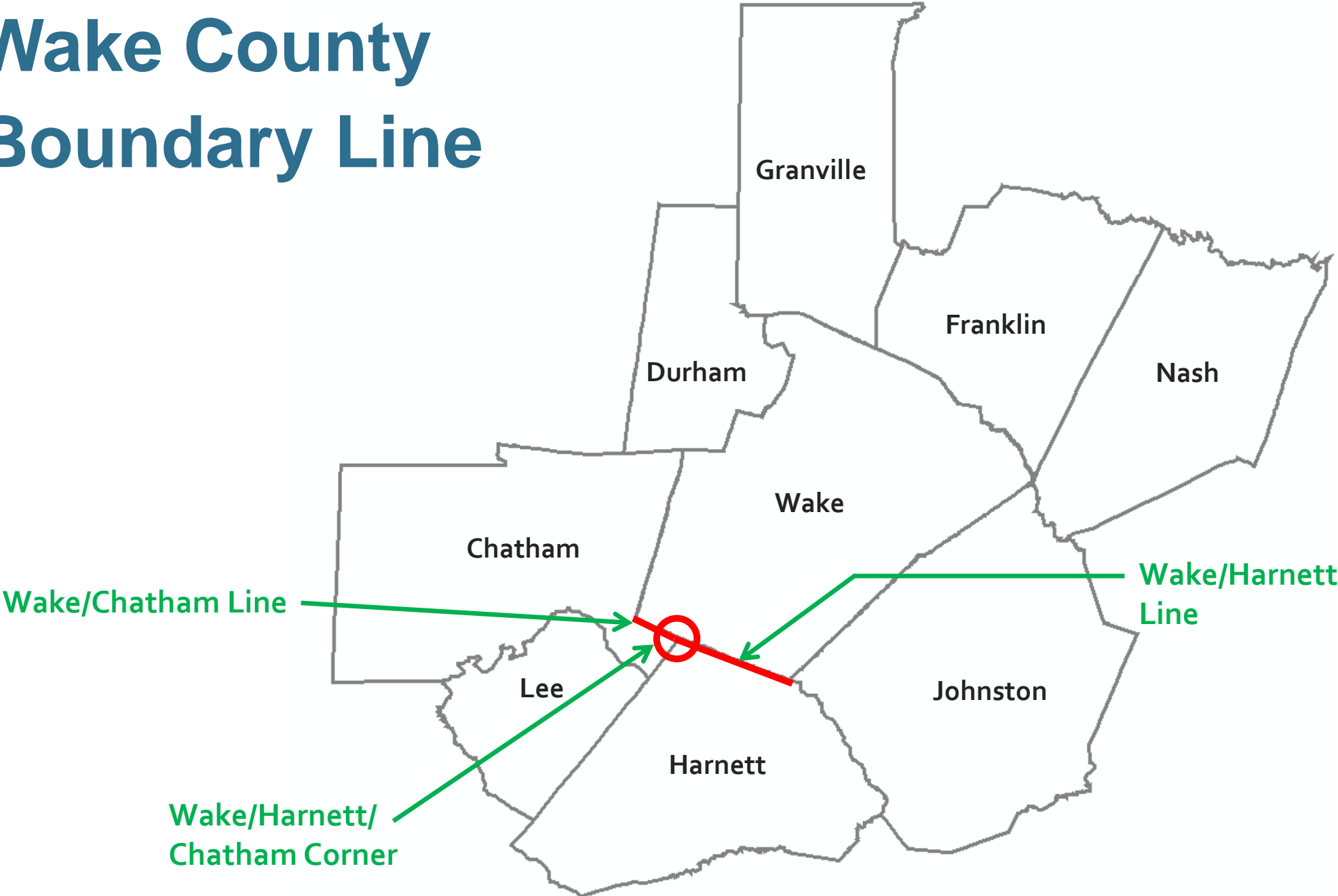
Harnett County

ON 38

I hereby certify that full as shown on this plot for Joyce B. Williams
has been measured with respect to minimum possible error to create the record

NOTE: P...

Wake County Boundary Line



Wake/Chatham Line

Wake/Harnett
Line

Wake/Harnett/
Chatham Corner

NC General Statutes

NCGS 153A-17 Existing Boundaries

- Established boundaries may only be changed in accordance with law

NCGS 153A-18 Uncertain or Disputed boundaries

- Uncertain boundaries may be resolved between two or more counties through a survey or other mapping
- The established line must be mutually adopted by the Board of Commissioners of each county

Steps to Resolve This Issue

Action

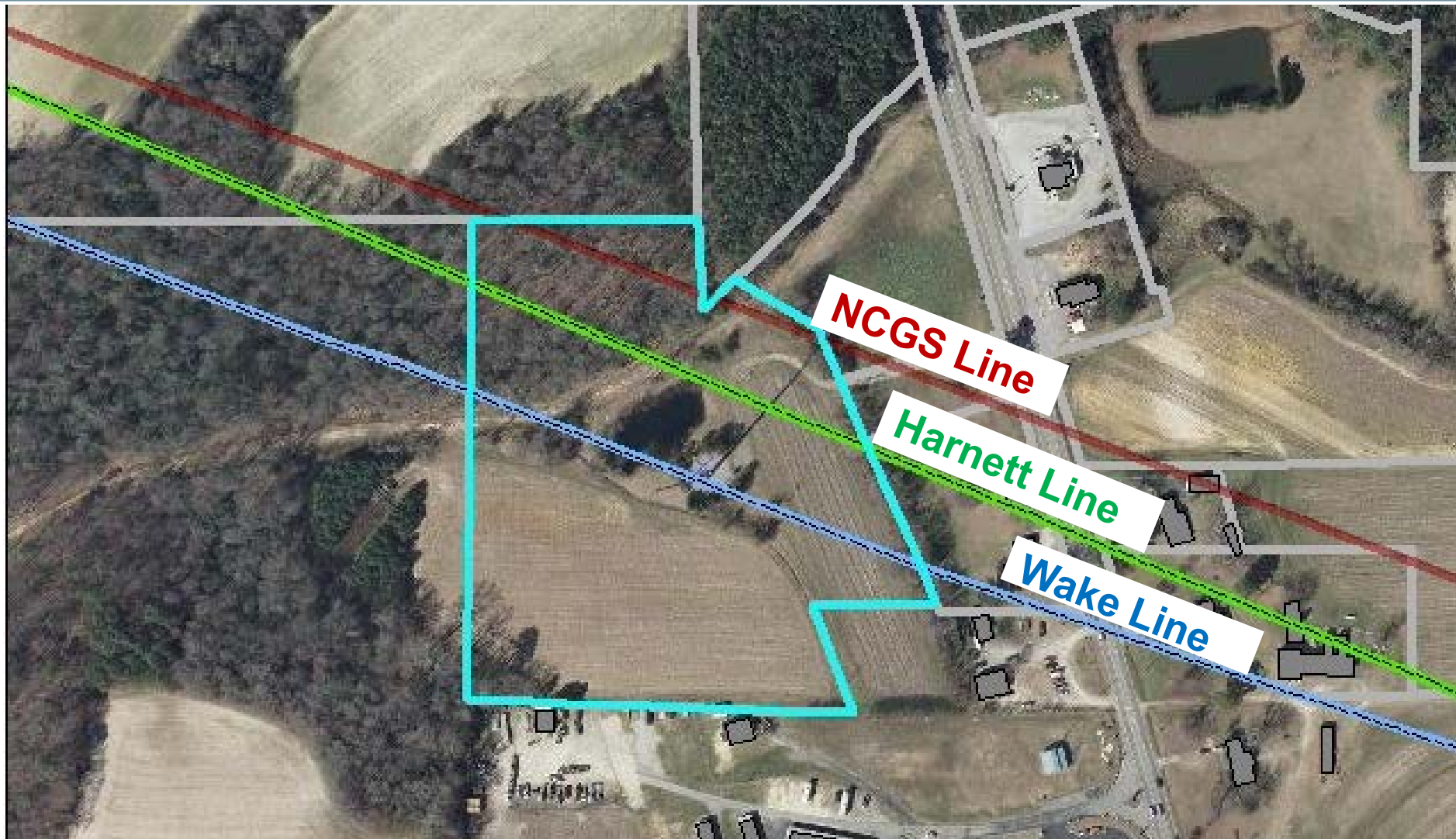
1. Enact legislation that corrects the common corner for Wake, Chatham and Harnett counties
2. Wake and Harnett counties to adopt resolution agreeing on NC Geodetic Survey of Wake/Harnett County line

Status

Complete (Session Law 2018-62)

Consider adoption today (Harnett County also considering today)

Example of Property Impact



Summary of Property Impacts

| Properties Affected | Parcel Count |
|---------------------|--------------|
| Land Only | 82 |
| Dwellings | 27 |
| Total | 109 |

Property Owner Outreach

- Contacted impacted property owners
- Hosted two community meetings to address their concerns
- Notified them of today's meeting

Impact on School Children

Session Law 2018-62 - ratified in June 2018

Allows residents of Wake, Chatham or Harnett County, who have students enrolled in one of these school systems impacted by these changes, the choice to remain in their current school system, tuition free, until graduation from high school

Next Steps

- Coordinate county services such as tax assessment, emergency response, voting districts, etc...
- Changes effective January 1, 2019
- Apply Wake County zoning to properties coming into Wake County