

Wendell North Public Safety Station

Schematic Design Presentation
Board of Commissioners

April 20, 2026



April 20, 2026

@wakegov    

wakegov.com

Location



Site Plan



PROPOSED SITE PLAN

- 6.8 Acres on Riley Hill Rd., Wendell, NC
- Co-Location at Sandy Pines Preserve
- 1-Story 17,664 SF Public Safety Station
- 44-Parking Spaces
- Storm Water Control Measures
- Well and Septic system
- Dedicated Emergency Drive Apron
- Circulation Drive
- Electric Vehicle Charging Station
- Landscape Buffer & Canopy Preservation

Floor Plan



FIRST FLOOR
17,664 SF



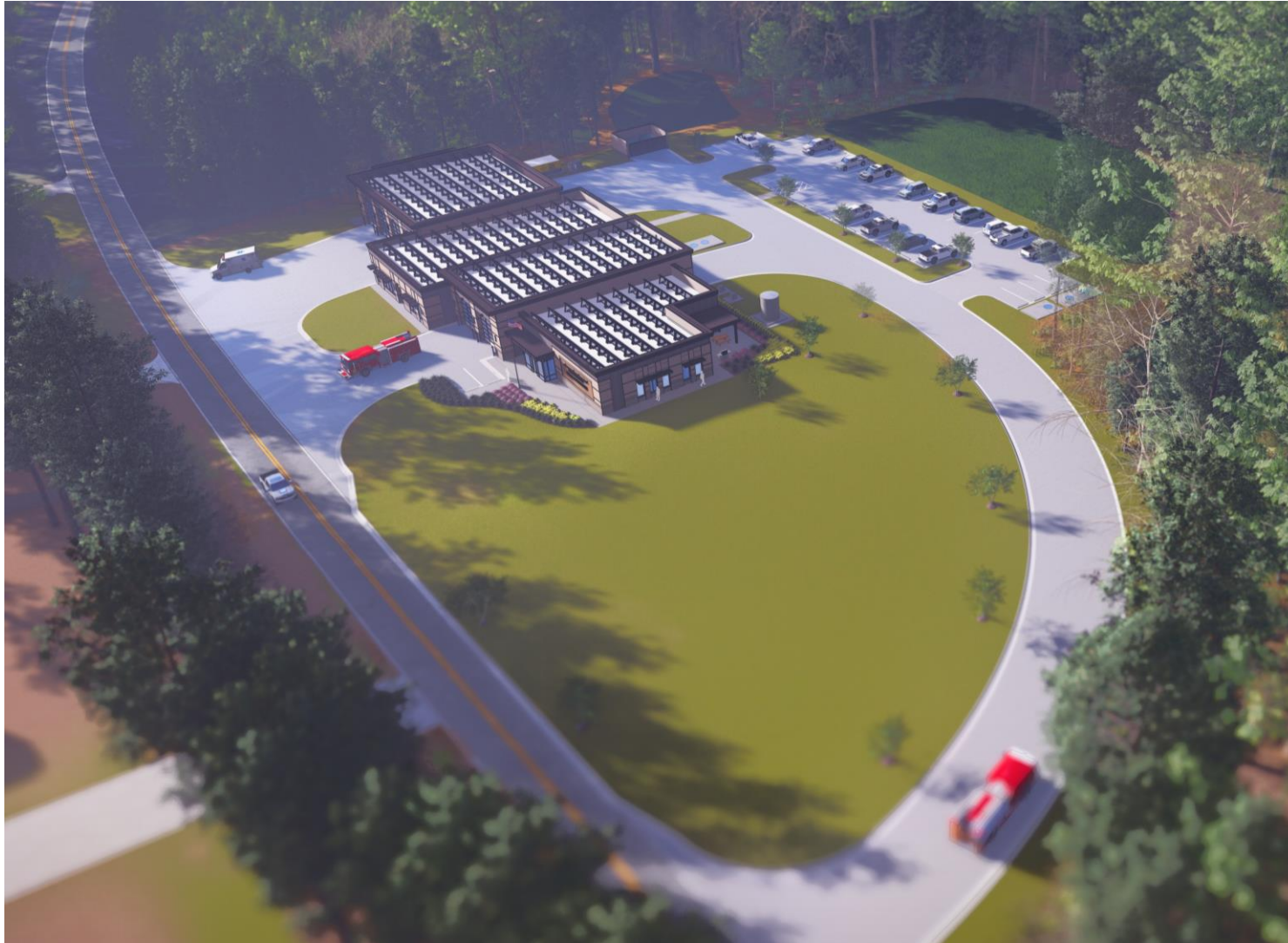
Front Elevation



Rear Elevation



Sustainable Design Strategies



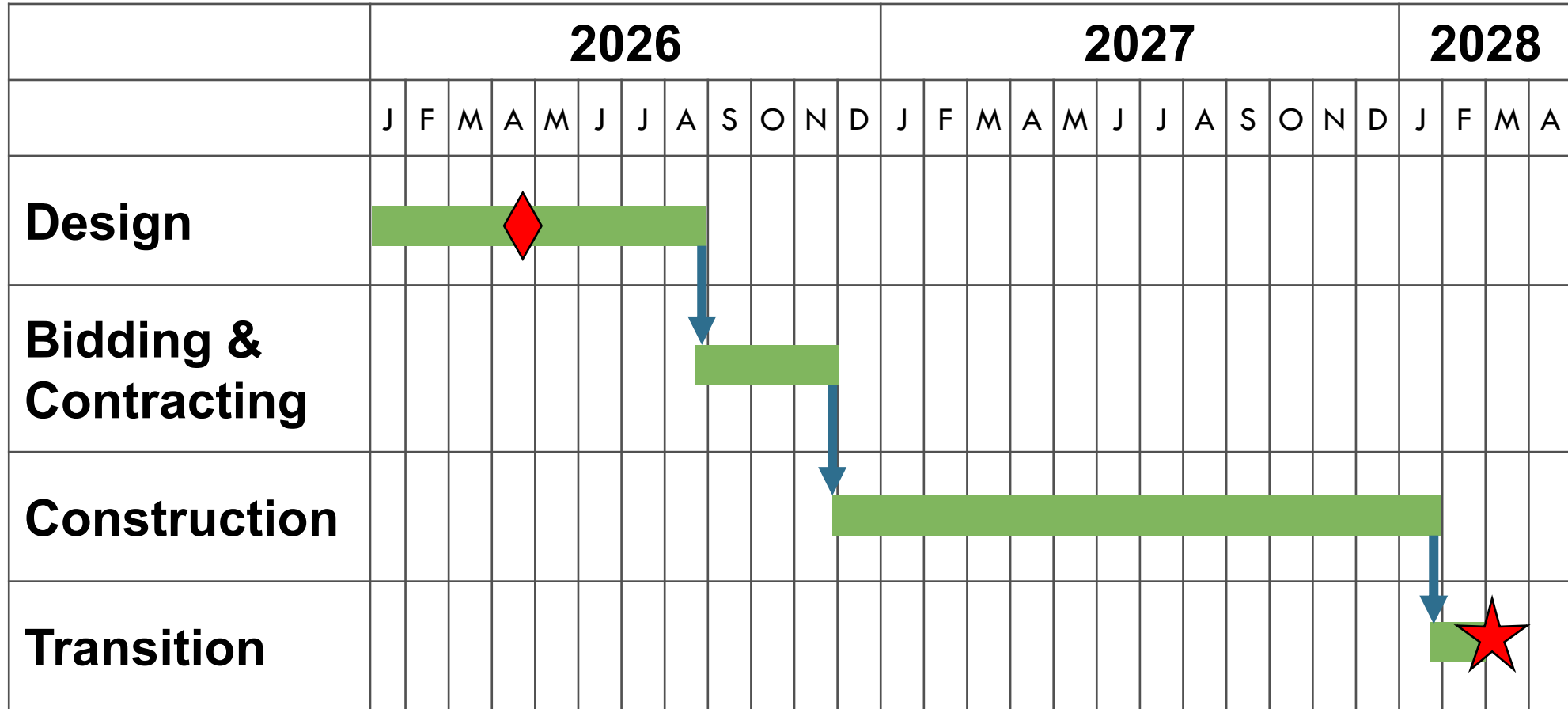
SITE FEATURES

- Native Drought Tolerant Landscaping - No Irrigation System
- High Solar Reflectivity (SRI) Concrete Paving - No Heat Island Effect
- Low-Carbon Concrete Paving
- LED Site Lighting

BUILDING FEATURES

- High Performance Window Systems, Glazing, and Wall Assemblies
- LED Lighting (Exterior & Interior)
- Regionally Sourced Masonry Materials
- Low Flow Plumbing Fixtures
- High Efficiency Heat Pumps-Heating & AC
- Dedicated System for Ventilation and Humidity Control (DOAS)
- Solar Photovoltaic System on Roof
- High SRI Roof (PVC White Roof System)

Project Schedule



 Schematic Design Approval

Projected Opening Early 2028

Next Steps

- April 20, 2026 Schematic Design Approval
- Summer 2026 Plans Complete
- Fall 2026 Bidding & GMP Award
- Fall/Winter 2026 Construction Commencement
- Fall/Winter 2027 Substantial Completion
- Early 2028 Occupancy

Projected Opening Early 2028

Community Engagement



COMMUNITY OUTREACH

- Direct Mailer to surrounding Neighbors
- Wendell Area Community Meeting
- Wake County Board of Adjustment – Special Use Permit
- Website Updates
- Community Data Base to Provide Project Updates

Questions



@wakegov    

wakegov.com