

Apex Main EMS

Schematic Design Presentation

Board of Commissioners

February 20, 2023

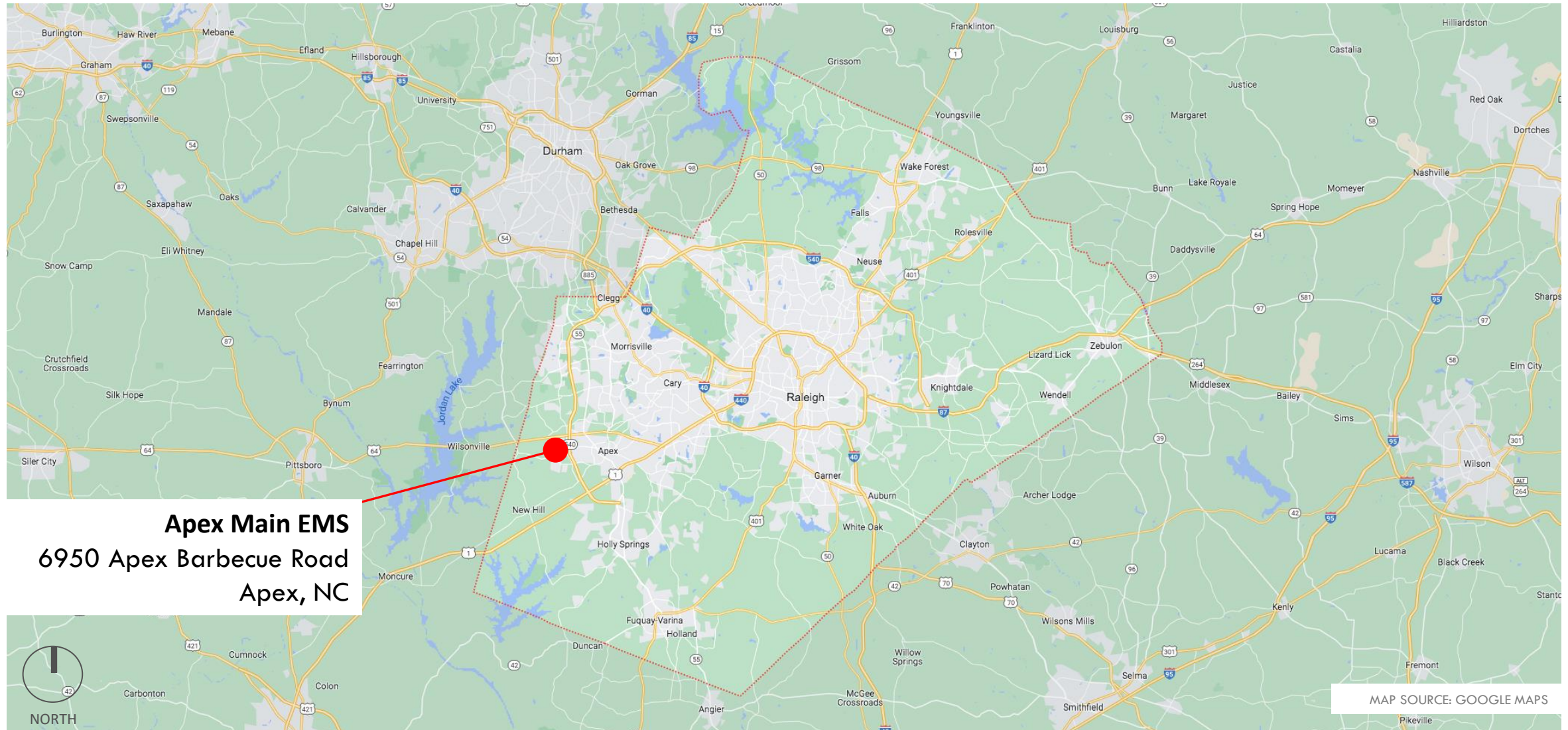
Tommy Moorman, Senior Project Manager, Wake County FD&C
Paul Stewart, Project Architect, Williard Stewart Architects

@wakegov



wakegov.com

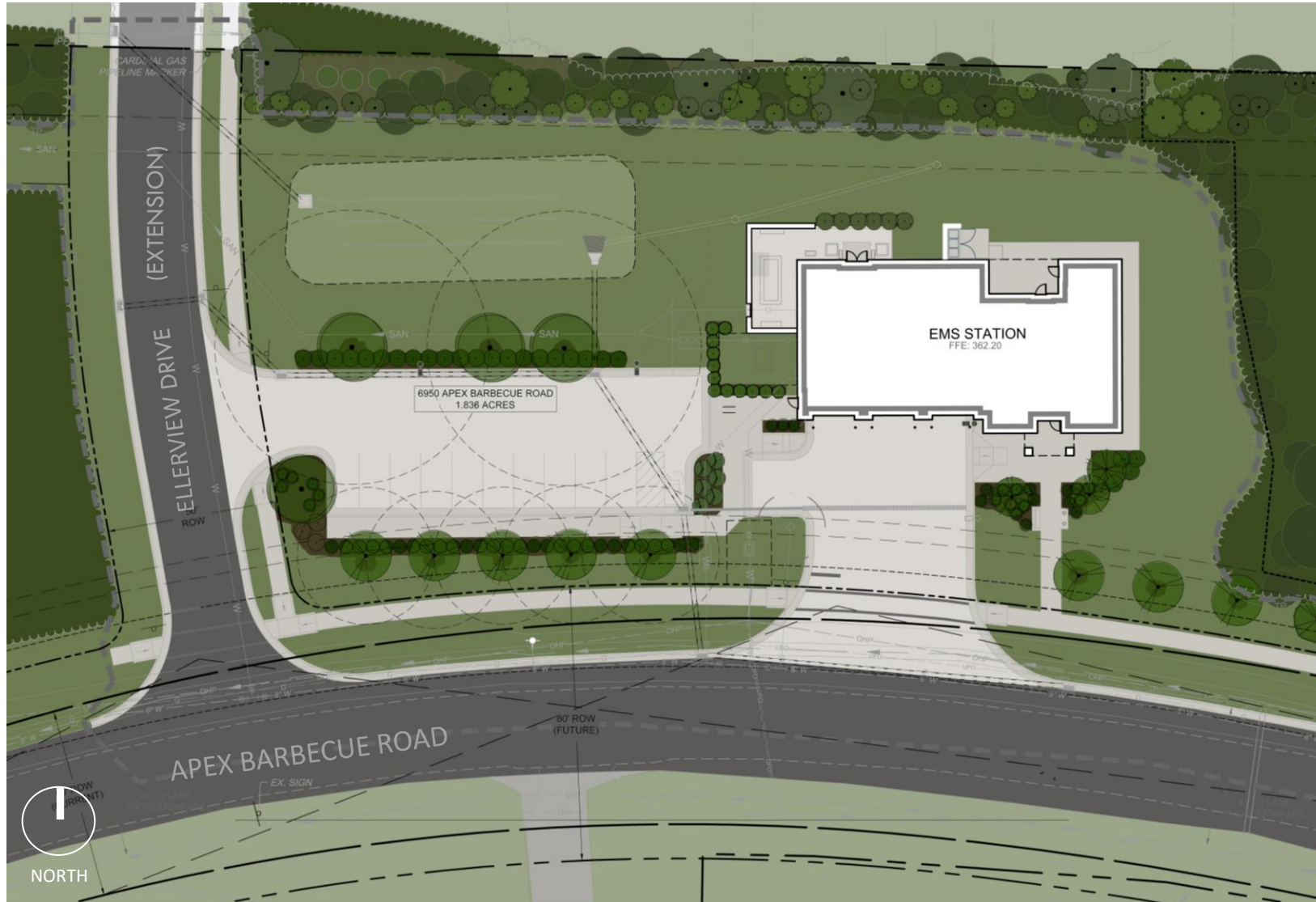
Apex Main EMS – Wake County Location



Apex Main EMS – Apex Location



Apex Main EMS – Site Plan



- Prototype Station Modified to Fit on Site
- 1-Story 4,300 Square Foot EMS Building
- 11--Parking Spaces
- 2--EV Parking Spaces
- Bioretention Stormwater Control Measure

Apex Main EMS – Floor Plan

- LEGEND
- VEHICLE BAY / BAY SUPPORT
 - COVERED AREAS
 - OFFICE
 - DAYROOM / KITCHEN / DINING
 - MULTIPURPOSE ROOM
 - BUILDING SUPPORT
 - BATHROOMS
 - CIRCULATION



Apex Main EMS – Building Rendering



Apex Main EMS – Building Rendering from Ellerview Dr.



Apex Main EMS – Sustainable Design Strategies

SITE FEATURES

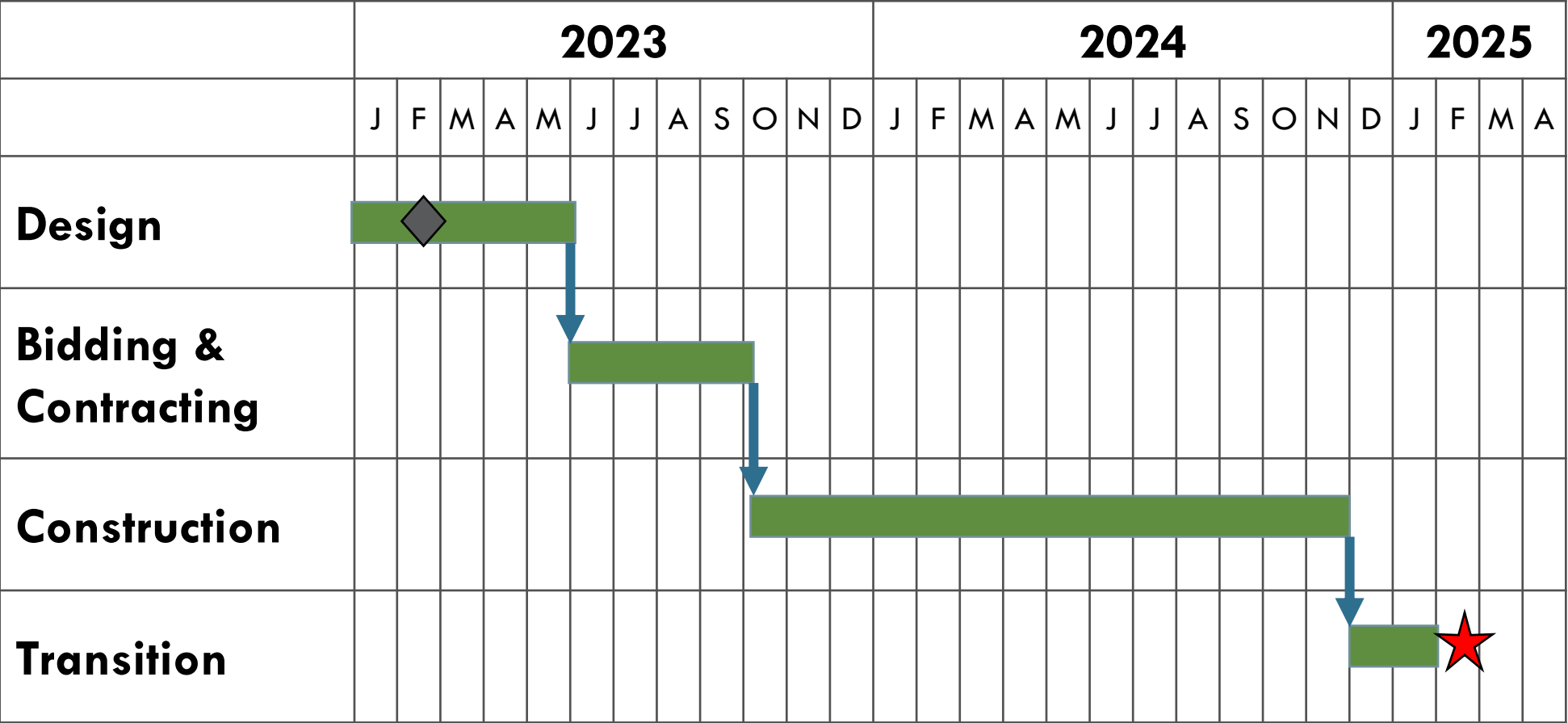
- Electric Vehicle (EV) Charging Station in Parking Lot
- Native Drought Tolerant Landscaping | No Onsite Irrigation System
- High Albedo | High Solar Reflectivity Index (SRI) Concrete Paving
- LED Site Lighting

BUILDING FEATURES

- Regionally Sourced Masonry Materials
- Photovoltaic (PV) Solar Panels
- Full Glass Vehicle Bay Overhead Doors Provide Daylighting
- High Performance Storefront Window Systems and Glazing
- LED Lighting (Exterior & Interior)
- Low Flow Plumbing Fixtures



Apex Main EMS – Project Schedule



Projected Opening Early 2025

Apex Main EMS – Next Steps

- February 20, 2023.....Schematic Design Approval
- Summer 2023.....Design Phase Complete
- Fall 2023.....Public Bid Process & Contract Award
- Fall 2023.....Begin Construction
- Fall 2024.....Substantial Completion
- Early 2025.....Occupancy



Questions?