

Wake County EMS Station 2

Schematic Design

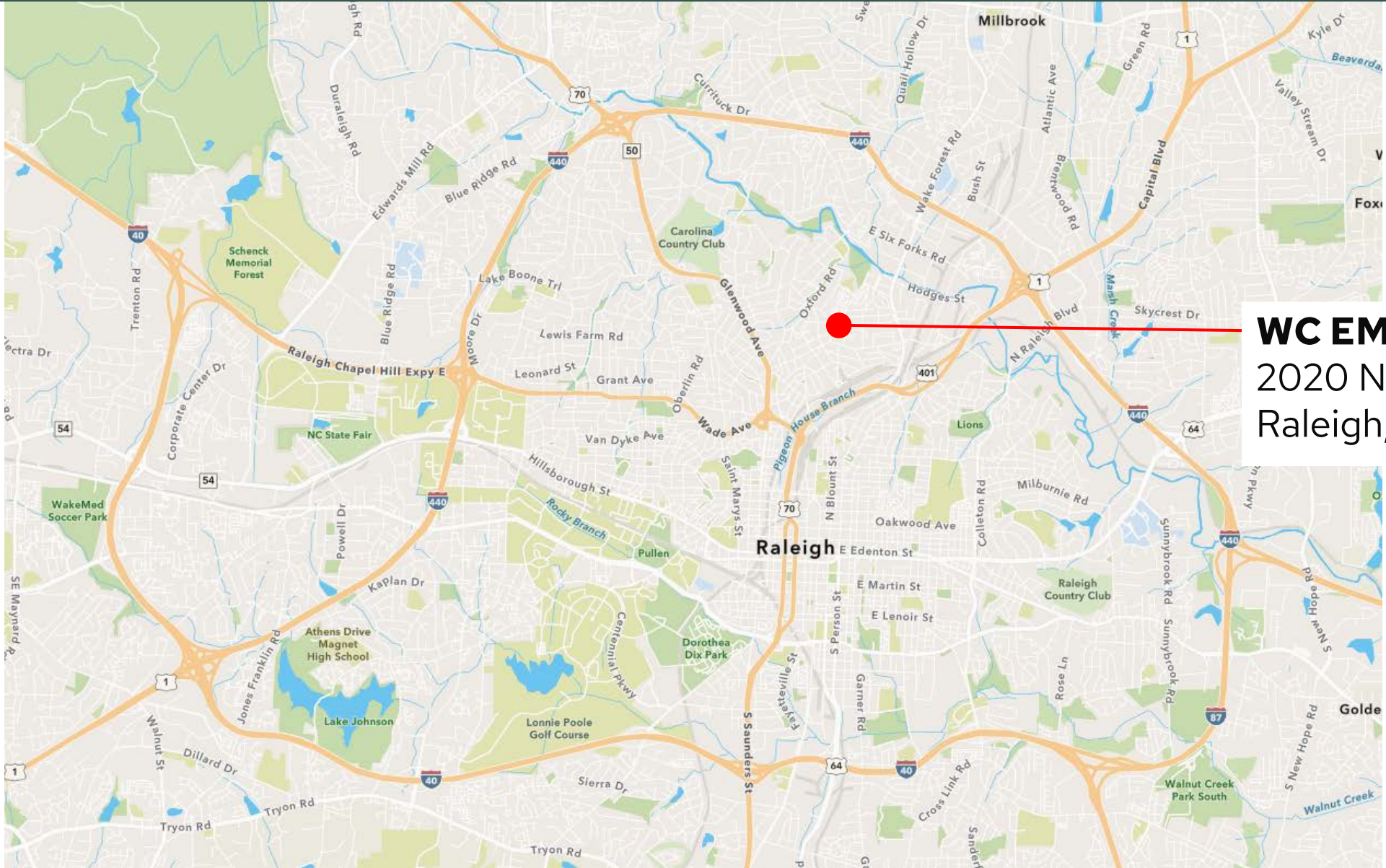
April 21, 2025



@wakegov    

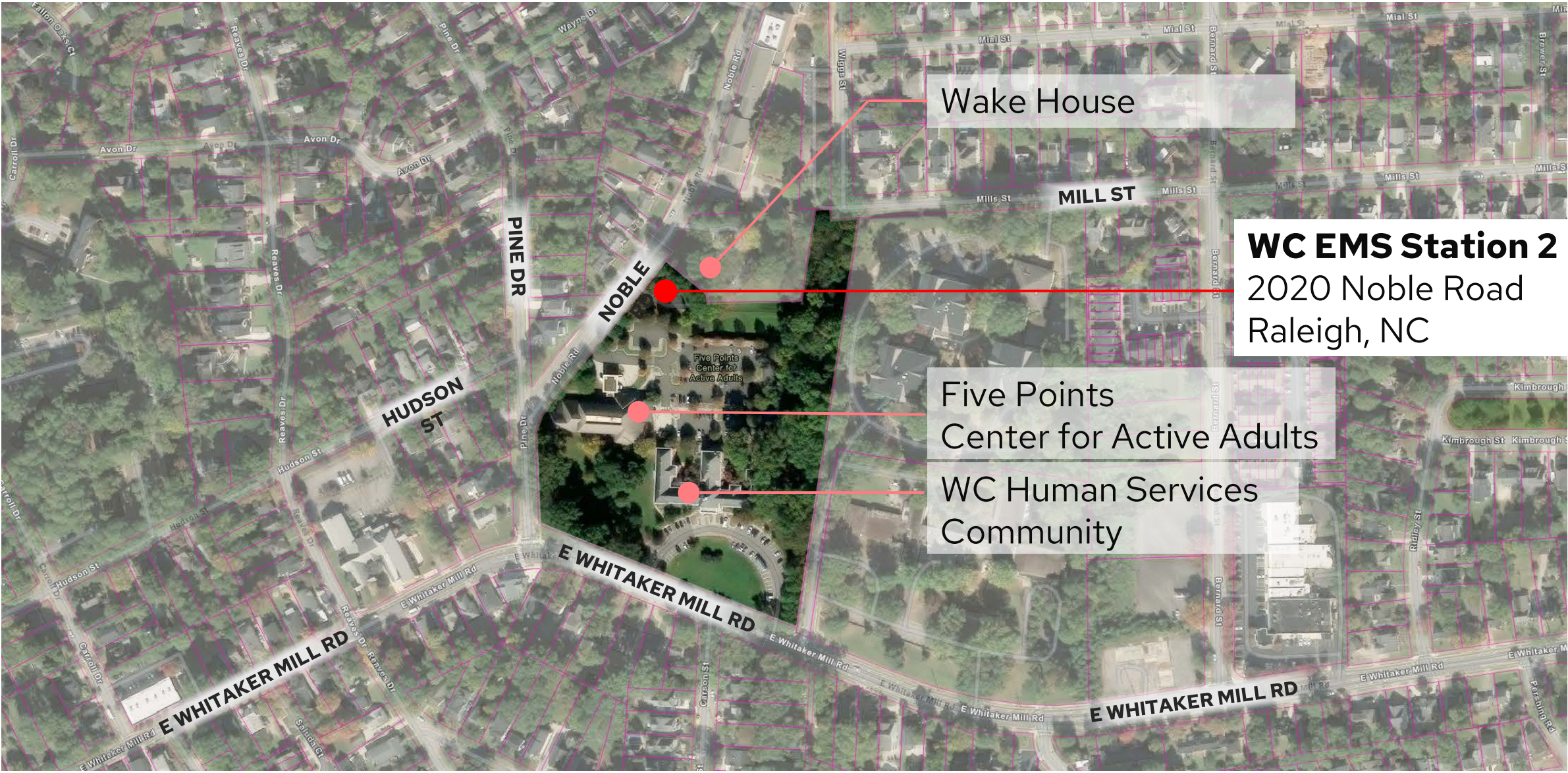
wake.gov

EMS Station 2 – Location



WC EMS Station 2
2020 Noble Road
Raleigh, NC

EMS Station 2 – Area Map



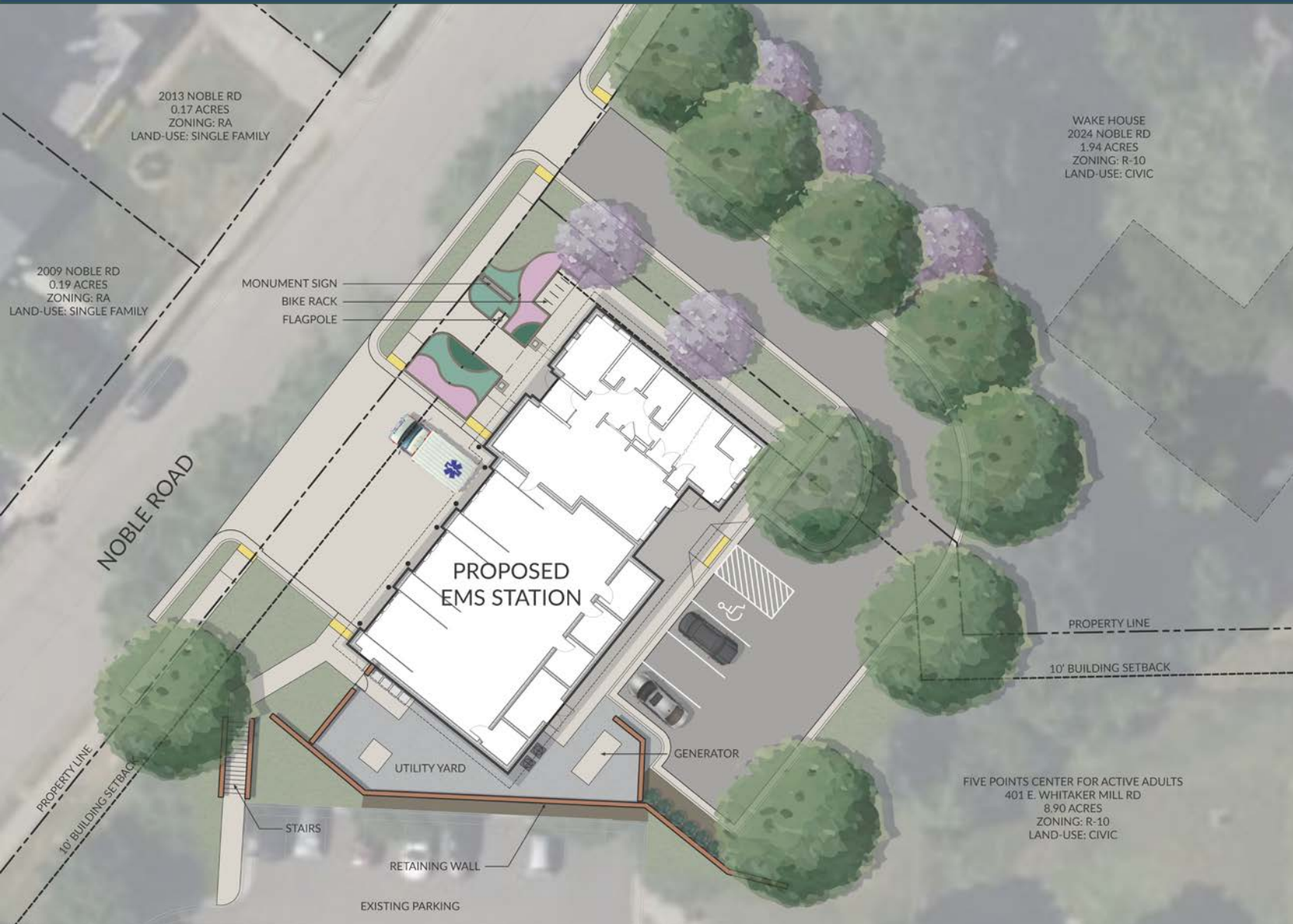
WC EMS Station 2
2020 Noble Road
Raleigh, NC

Wake House

Five Points
Center for Active Adults

WC Human Services
Community

EMS Station 2 – Site Plan



WC EMS Station 2

- Neighborhood Prototype Station
- 1 - Story 4,383 SF EMS Building
- 5 Parking Spaces
- Shared Parking at Raleigh Center For Active Adults
- Modifying Existing Bioretention Stormwater Control Measure



EMS Station 2 – Site Plan – Existing vs Proposed

EXISTING SITE PLAN

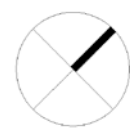


PROPOSED SITE PLAN



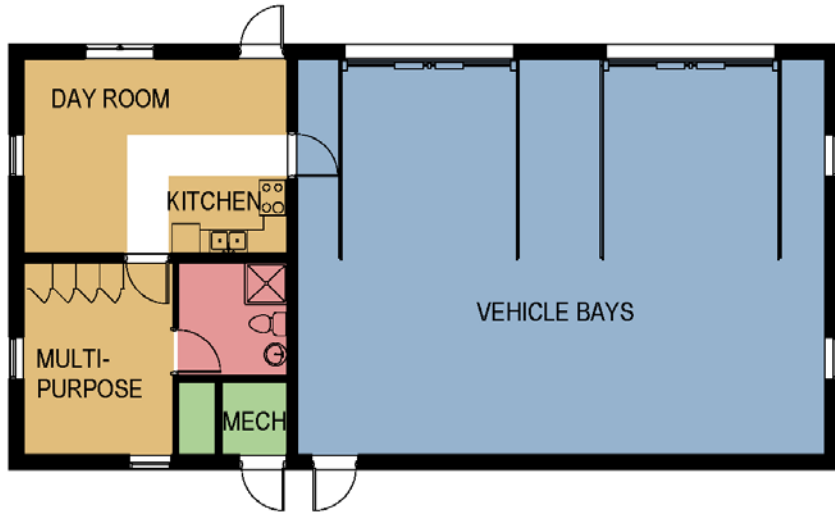
EMS Station 2 – Floor Plan

- VEHICLE BAY / BAY SUPPORT
- BUILDING SUPPORT
- LIVING AREAS
- BATHROOM / PERSONAL SPACES
- OFFICE



EMS Station 2 – Floor Plan – Existing vs Proposed

EXISTING PLAN - 1,759 SF



	EXISTING	PROPOSED
VEHICLE BAY / BAY SUPPORT	1,046 SF	2,164 SF
BUILDING SUPPORT	38 SF	190 SF
LIVING AREAS	351 SF	807 SF
BATHROOM / PERSONAL SPACES	62 SF	187 SF
OFFICE	0 SF	150 SF

PROPOSED PLAN - 4,383 SF



EMS Station 2 – Building Rendering

EXISTING ELEVATION



Source: Google
Map

PROPOSED ELEVATION - RENDERING



EMS Station 2 – Sustainable Design Strategies



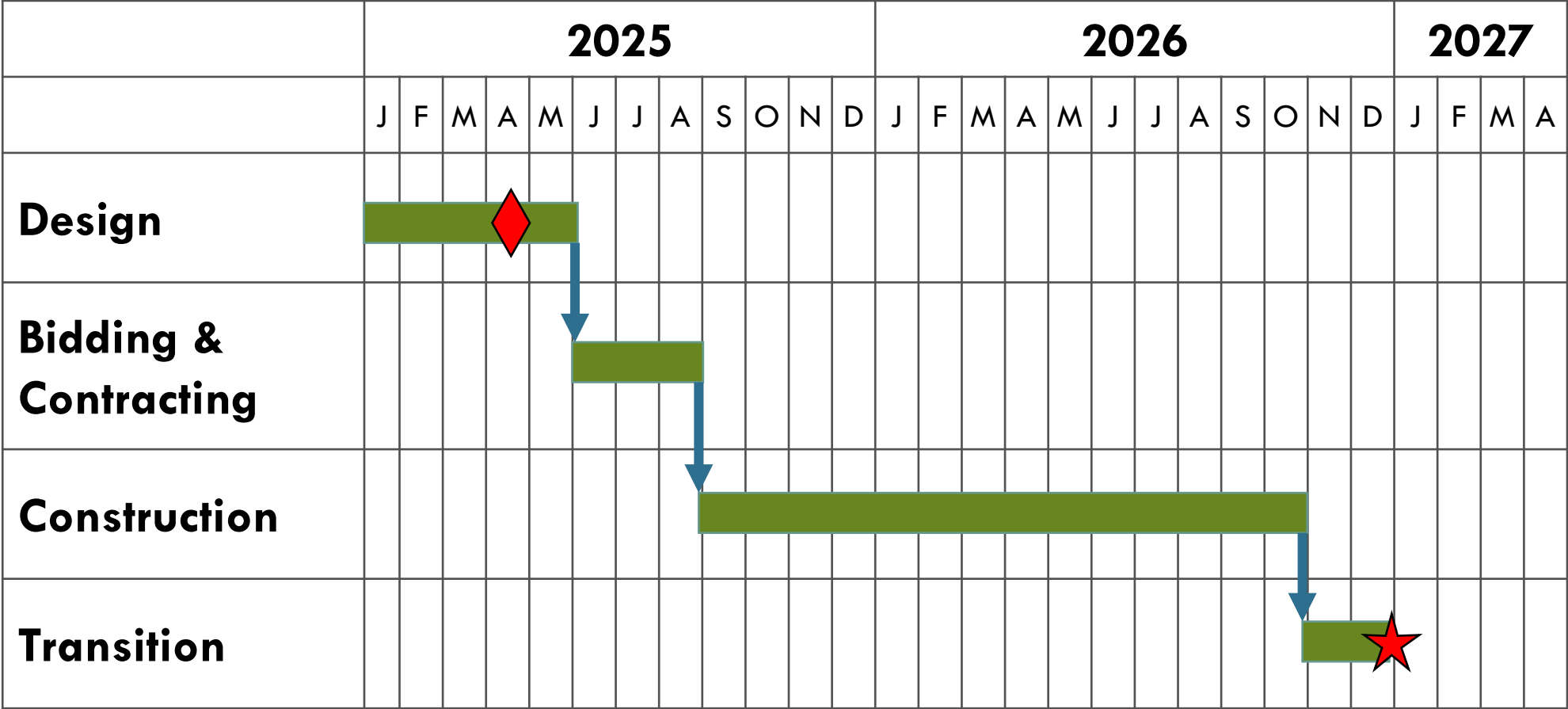
SITE FEATURES

- Native Drought Tolerant Landscaping
- High Albedo | High Solar Reflectivity Index (SRI) Concrete Paving
- Low-Carbon Concrete
- LED Site Lighting

BUILDING FEATURES

- High Performance Storefront Window Systems and Glazing
- High Performance Wall Assembly
- LED Lighting (Exterior & Interior)
- Regionally Sourced Masonry Materials
- Low Flow Plumbing Fixtures
- High Efficiency Heat Pumps – Heating and Air Conditioning
- Dedicated System for Ventilation and Humidity Control

EMS Station 2 – Project Schedule



Projected Re-Opening Fall/Winter 2026

EMS Station 2 – Next Steps

- | | |
|--------------------|-------------------------------------|
| ■ April 21, 2025 | Schematic Design Approval |
| ■ Summer 2025 | Permitting |
| ■ Summer 2025 | Public Bid Process & Contract Award |
| ■ Fall 2025 | Begin Construction |
| ■ Fall 2026 | Substantial Completion |
| ■ Fall/Winter 2026 | Occupancy |

EMS Station 2 – Community Engagement

- Wake County Human Services Meeting
- City of Raleigh Senior Center Meeting
- Community Virtual Open House
- Neighborhood Canvassing



Questions?



@wakegov    

wake.gov