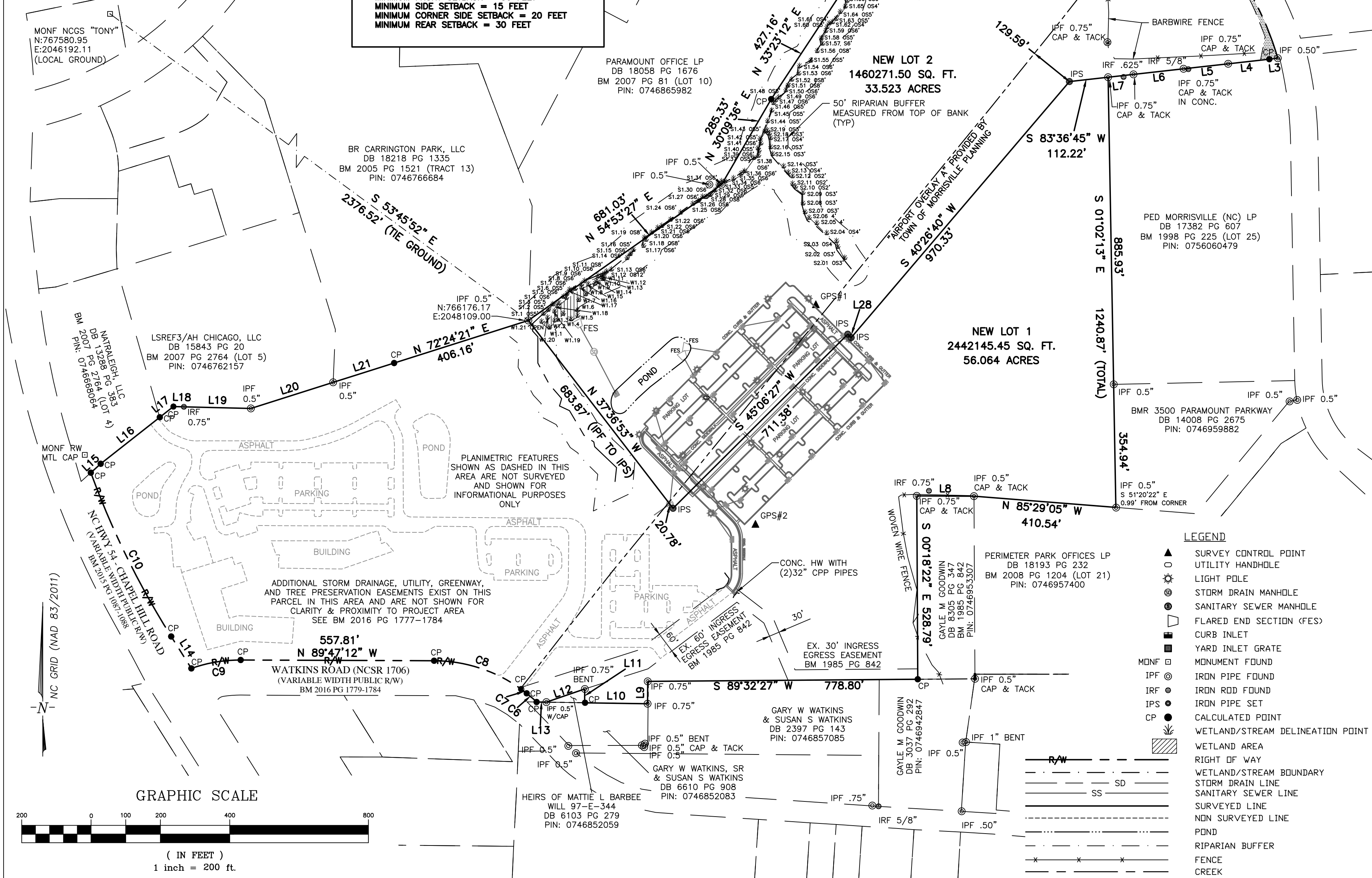


**NOTES**

1. NEW LOT 1 AND NEW LOT 2 WILL CONTINUE TO BE CONSIDERED AS ONE ZONING LOT UNTIL SUCH TIME AS CONSTRUCTION IS PERMITTED TO BEGIN ON NEW LOT 2.
2. NO NEW CONSTRUCTION SHALL BEGIN ON NEW LOT 2 UNTIL THE PORTION OF THE EXISTING PARKING LOT LOCATED ON NEW LOT 2 IS REMOVED PER APPROVED SITE PLAN.

SITE DATA TABLE	
THE TRUSTEES OF WAKE TECHNICAL COMMUNITY COLLEGE	
DB 14577 PG 1085	
DB 13173 PG 2657	
DB 13262 PG 2329	
BM 2015 PG 1087-1088	
BM 2008 PG 1326-1329	
BM 2001 PG 914-918	
BM 2006 PG 1	
PIN: 0746867028	
ZONING: C-01	
BUILDING SETBACK INFORMATION (C-01 DISTRICT)	
MINIMUM FRONT SETBACK = 30 FEET	
MINIMUM SIDE SETBACK = 15 FEET	
MINIMUM CORNER SIDE SETBACK = 20 FEET	
MINIMUM REAR SETBACK = 30 FEET	

MONF NCCS "TONY"  
 N:767580.95  
 E:2046192.11  
 (LOCAL GROUND)



BR CARRINGTON PARK, LLC  
 DB 18218 PG 1335  
 BM 2005 PG 1521 (TRACT 13)  
 PIN: 0746766684

LSREF3/AH CHICAGO, LLC  
 DB 15843 PG 20  
 BM 2007 PG 2764 (LOT 5)  
 PIN: 0746762157

PARAMOUNT OFFICE LP  
 DB 18058 PG 1676  
 BM 2007 PG 81 (LOT 10)  
 PIN: 0746865982

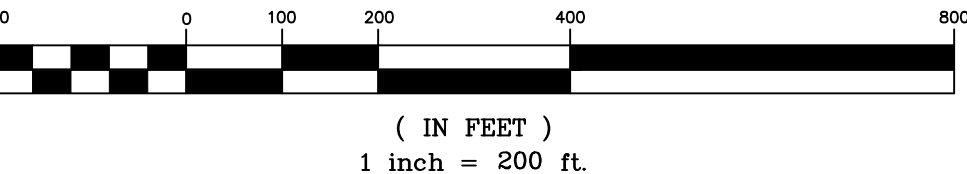
PED MORRISVILLE (NC) LP  
 DB 17382 PG 607  
 BM 1998 PG 225 (LOT 25)  
 PIN: 0756060479

NEW LOT 1  
 2442145.45 SQ. FT.  
 56.064 ACRES

NEW LOT 2  
 1460271.50 SQ. FT.  
 33.523 ACRES

ADDITIONAL STORM DRAINAGE, UTILITY, GREENWAY, AND TREE PRESERVATION EASEMENTS EXIST ON THIS PARCEL IN THIS AREA AND ARE NOT SHOWN FOR CLARITY & PROXIMITY TO PROJECT AREA SEE BM 2016 PG 1777-1784

PLANIMETRIC FEATURES SHOWN AS DASHED IN THIS AREA ARE NOT SURVEYED AND SHOWN FOR INFORMATIONAL PURPOSES ONLY



**LEGEND**

- ▲ SURVEY CONTROL POINT
- UTILITY HANDHOLE
- ☼ LIGHT POLE
- ⊙ STORM DRAIN MANHOLE
- ⊙ SANITARY SEWER MANHOLE
- ▭ FLARED END SECTION (FES)
- ▭ CURB INLET
- ▭ YARD INLET GRATE
- ▭ MONUMENT FOUND
- IPF IRON PIPE FOUND
- IRF IRON ROD FOUND
- IPS IRON PIPE SET
- CP CALCULATED POINT
- ▨ WETLAND/STREAM DELINEATION POINT
- ▨ WETLAND AREA
- ▨ RIGHT OF WAY
- ▨ WETLAND/STREAM BOUNDARY
- ▨ STORM DRAIN LINE
- ▨ SANITARY SEWER LINE
- ▨ SURVEYED LINE
- ▨ NON SURVEYED LINE
- ▨ POND
- ▨ RIPARIAN BUFFER
- ▨ FENCE
- ▨ CREEK

WAKE COUNTY CEDAR FORK TOWNSHIP	
#	DATE BY DESCRIPTION REVISIONS

DRAWN BY GJD  
 APPROVED BY ACH  
 CHECKED BY ACH  
 DATE 9/15/22

TITLE  
 SUBDIVISION PLAT FOR THE WAKE COUNTY BOARD OF EDUCATION (H14 SITE)

SUBDIVISION PLAT ON THE PROPERTY OF  
 THE TRUSTEES OF WAKE TECHNICAL COMMUNITY COLLEGE  
 PREPARED FOR  
 THE WAKE COUNTY BOARD OF EDUCATION (H14 SITE)  
 433 KNOWLEDGE DRIVE & 0 PARAMOUNT PARKWAY, MORRISVILLE, NC 27560