

Sheet Number	Sheet Title
G001	Cover Sheet
G002	Notes Legends & Abbreviations
G100	Overall Existing Conditions Plan
G101	Existing Conditions (Sheet 1 of 7)
G102	Existing Conditions (Sheet 2 of 7)
G103	Existing Conditions (Sheet 3 of 7)
G104	Existing Conditions (Sheet 4 of 7)
G105	Existing Conditions (Sheet 5 of 7)
G106	Existing Conditions (Sheet 6 of 7)
G107	Existing Conditions (Sheet 7 of 7)
G108	Easement Exhibit
L100	Overall Demolition Plan
L101	Demolition Plan (Sheet 1 of 7)
L102	Demolition Plan (Sheet 2 of 7)
L103	Demolition Plan (Sheet 3 of 7)
L104	Demolition Plan (Sheet 4 of 7)
L105	Demolition Plan (Sheet 5 of 7)
L106	Demolition Plan (Sheet 6 of 7)
L107	Demolition Plan (Sheet 7 of 7)
L108	Traffic Control Plan
L200	Overall Site Plan
L201	Site Plan (Sheet 1 of 7)
L202	Site Plan (Sheet 2 of 7)
L203	Site Plan (Sheet 3 of 7)
L204	Site Plan (Sheet 4 of 7)
L205	Site Plan (Sheet 5 of 7)
L206	Site Plan (Sheet 6 of 7)
L207	Site Plan (Sheet 7 of 7)
L208	Line and Curve Tables
L209	Greenway Profile (Sheet 1 of 5)
L210	Greenway Profile (Sheet 2 of 5)
L211	Greenway Profile (Sheet 3 of 5)
L212	Greenway Profile (Sheet 4 of 5)
L213	Greenway Profile (Sheet 5 of 5)
L214	Detour Route Plan
L300	Overall Grading and Drainage Plan
L301	Grading and Drainage Plan (Sheet 1 of 7)
L302	Grading and Drainage Plan (Sheet 2 of 7)
L303	Grading and Drainage Plan (Sheet 3 of 7)
L304	Grading and Drainage Plan (Sheet 4 of 7)
L305	Grading and Drainage Plan (Sheet 5 of 7)
L306	Grading and Drainage Plan (Sheet 6 of 7)
L307	Grading and Drainage Plan (Sheet 7 of 7)
L400	Overall Erosion & Sedimentation Control Plan
L401	Erosion & Sedimentation Control Plan I (Sheet 1 of 7)
L402	Erosion & Sedimentation Control Plan II (Sheet 2 of 7)
L403	Erosion & Sedimentation Control Plan III (Sheet 3 of 7)
L404	Erosion & Sedimentation Control Plan IV (Sheet 4 of 7)
L405	Erosion & Sedimentation Control Plan V (Sheet 5 of 7)
L406	Erosion & Sedimentation Control Plan VI (Sheet 6 of 7)
L407	Erosion & Sedimentation Control Plan VII (Sheet 7 of 7)
L500	Site Plan Enlargement - Trail Head
L501	Site Plan Enlargement - Stream Stabilization
L502	Site Plan Enlargement - Stannard Trail Connection
L503	Stream Bank Sections
L600	Site Details I
L601	Site Details II
L602	Site Details III
L603	Site Details IV
L604	Landscape Details and Plant List
L605	Erosion Control Details I
L606	Erosion Control Details II
L607	Erosion Control Details III
L608	Erosion Control Details IV
L609	Signage Details
E100	Electrical Site Plan
E101	Electrical Details & Schedule
S001	Structural General Notes and Abbreviations
S002	Structural Cast-In-Place Concrete Specifications
S003	Timber Pile Specifications
S004	Steel Pile Specifications
S005	Steel Pile Specifications
S101	Plan View
S102	Plan View
S103	Plan View
S104	Plan View
S105	Structure 2002 Typical Section & Elevation
S106	Structure 2002 Plan View
S107	Abutment Details for Pre-Engineered Bridges
S108	Boardwalk Improvements Typical Section & Elevation
S109	Typical Boardwalk Framing Plan & Details

THE CITY OF RALEIGH

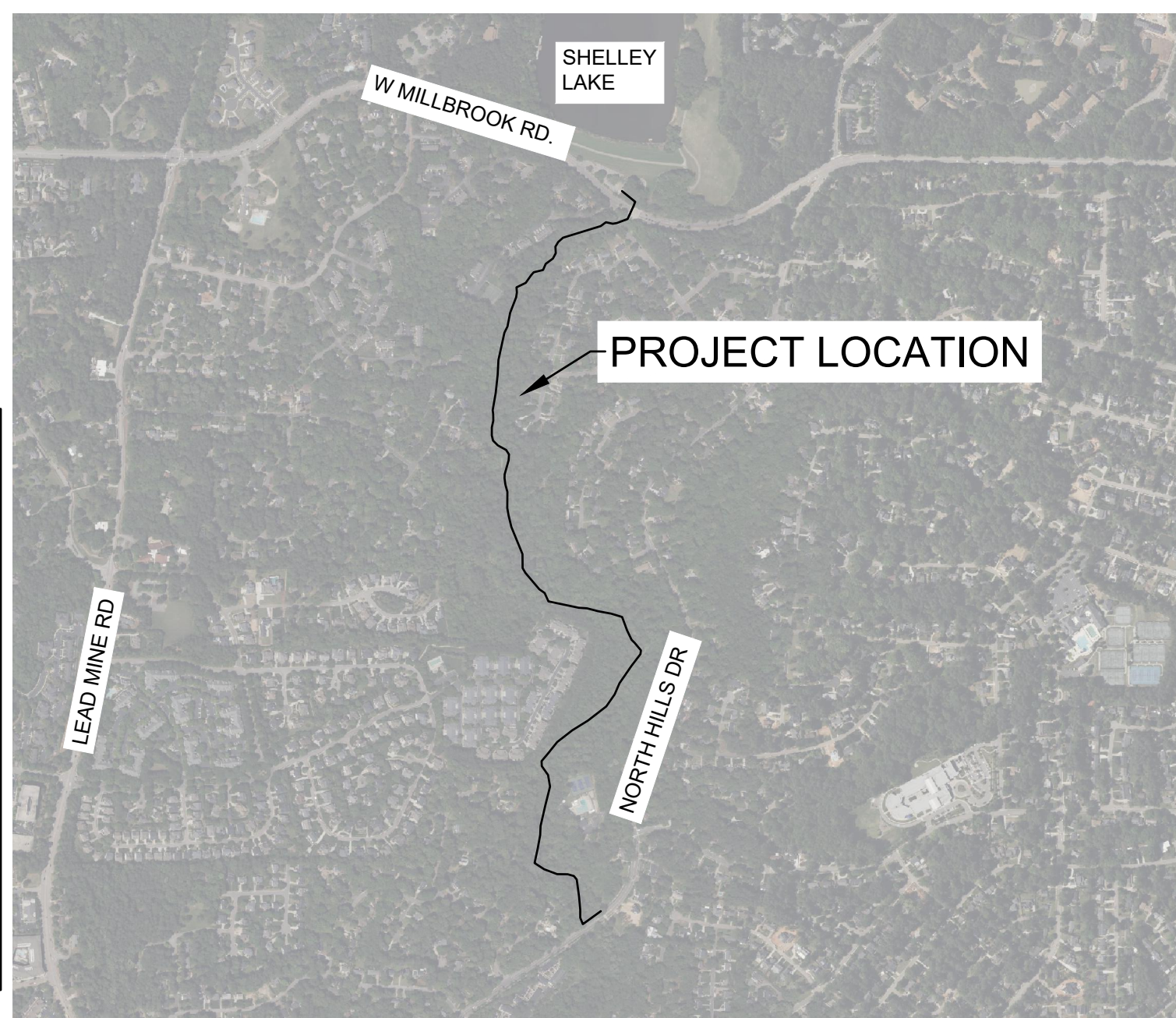
PARKS, RECREATION AND CULTURAL RESOURCES

MARCHELL ADAMS-DAVID
CITY MANAGER

JANET COWELL
MAYOR



MINE CREEK GREENWAY IMPROVEMENTS SPR SUBMITTAL



- TCPED NOTES:**
- PRIOR TO ANY WORK THAT IMPACTS THE RIGHT-OF-WAY, CLOSING OR DETOURING OF ANY STREET, LANE, OR SIDEWALK, THE CONTRACTOR MUST APPLY FOR A PERMIT WITH RIGHT-OF-WAY SERVICES. PLEASE DIRECT ANY QUESTIONS TO rightofwayservices@raleighnc.gov.
 - THE STREET, LANE, SIDEWALK, CLOSURE PERMIT IS REQUIRED FOR ANY CLOSURE ON CITY STREETS AND ALL NCDOT STREETS WITHIN RALEIGH'S JURISDICTION.
 - A PERMIT REQUEST WITH A TCPEP PLAN SHALL BE SUBMITTED TO RIGHT-OF-WAY SERVICES THROUGH THE CITY OF RALEIGH PERMIT AND DEVELOPMENT PORTAL.
 - PRIOR TO THE START OF WORK, THE CLIENT SHALL SCHEDULE A PRE-CONSTRUCTION MEETING WITH THE ENGINEERING INSPECTIONS COORDINATOR TO REVIEW THE SPECIFIC COMPONENTS OF THE APPROVED PLAN, AND ENSURE ALL PERMITS ARE ISSUED.
 - ALL TCPEP PLANS SHALL COMPLY WITH ALL LOCAL, STATE, AND FEDERAL REQUIREMENTS AND STANDARDS, INCLUDING BUT NOT LIMITED TO:
 - MANUAL ON UNIFORM TRAFFIC CONTROL (MUTCD)
 - PUBLIC RIGHTS-OF-WAY ACCESSIBILITY GUIDELINES (PROWAG)
 - AMERICAN DISABILITY ACT (ADA) REQUIREMENTS
 - RALEIGH STREET DESIGN MANUAL (RSDM)
 - ALL PUBLIC SIDEWALKS MUST BE ACCESSIBLE TO PEDESTRIANS WHO ARE VISUALLY IMPAIRED AND/OR PEOPLE WITH MOBILITY CONCERNS. EXISTING AND ALTERNATIVE PEDESTRIAN ROUTES DURING CONSTRUCTION SHALL BE REQUIRED TO BE COMPLIANT WITH THE PUBLIC RIGHTS OF WAY ACCESSIBILITY GUIDELINES (PROWAG), THE ADA STANDARDS FOR ACCESSIBLE DESIGN AND THE MANUAL ON UNIFORM TRAFFIC CONTROL DEVICES (MUTCD).
 - ALL PERMITS MUST BE AVAILABLE AND VISIBLE ON SITE DURING OPERATION.

Project Data Sheet

Planning and Development Customer Service Center • One Exchange Plaza, Suite 400 | Raleigh, NC 27601 | 919-996-2500

This form must be completed and applied to the cover sheet of drawings submitted with a Non-Residential building permit associated with a Site Permit Review, or permits for an apartment, office, and/or commercial uses.

GENERAL INFORMATION			
Development Name: Mine Creek Greenway Improvements		Proposed Use: Greenway	
Property Address(es): Raleigh, NC			
Approved Site Plan or Subdivision case #:			
Wake County Property Identification Number(s) (PIN) for each parcel to which these guidelines will apply:			
PIN #: See Below	PIN #: See Below	PIN #: See Below	PIN #: See Below
<input type="checkbox"/> Apartment <input type="checkbox"/> Hotel/Motel <input type="checkbox"/> Office <input type="checkbox"/> School <input type="checkbox"/> Townhouse	<input type="checkbox"/> Frequent Transit Development Office <input type="checkbox"/> Industrial building <input type="checkbox"/> Religious institution <input type="checkbox"/> Shopping center <input type="checkbox"/> Civic use: Park, community center, museum or government facility	<input type="checkbox"/> Congregate care <input type="checkbox"/> Mixed residential <input type="checkbox"/> Residential condo <input type="checkbox"/> Single-family residential	<input type="checkbox"/> Hospital <input type="checkbox"/> Non-residential condo <input type="checkbox"/> Retail <input type="checkbox"/> Telecommunication tower <input type="checkbox"/> Other
Scope of work: Improvements to Mine Creek Greenway trail, including trail resurfacing and widening, structure replacement, amenity replacement, stormwater/erosion control recommendations and improvements, and trail head improvements.			
FOR APARTMENTS, CONDOS, AND TOWNHOMES ONLY			
1. Total number of townhouse lots: Number attached: Number detached:			
2. Total number of apartment or condominium units:			
3. Total number of Congregate Care or Life Care Dwelling units:			
4. Overall total number of dwelling units (from 1-3 above):			
5. Number of bedroom units: 1BR: 2BR: 3BR: 4BR or more:			
6. Overall unit(s) per acre densities per zoning district(s):			
DEVELOPMENT TYPE AND SITE DATA TABLE (applicable to all developments)			
Zoning Information		Building Information	
Zoning district(s): RA		Proposed use of building(s):	
If more than one district, provide acreage of each:		Proposed sq. ft. of building(s) gross:	
Overlay district(s):		Existing sq. ft. of building(s) gross:	
Total site acreage: 167.71 AC		Total sq. ft. gross (existing and proposed):	
Off street parking: Required: Provided:		Proposed height of building(s):	
COA (Certificate of Appropriateness) case #:		FAR (floor area ratio) %:	
BOA (Board of Adjustment) case # A -		Building lot coverage %:	
CUD (Conditional Use District) case # Z -		Inside City Limits? Yes <input type="checkbox"/> No <input type="checkbox"/>	

REVISION 07.01.24
raleighnc.gov

PAGE 1 OF 2

STORMWATER INFORMATION	
Existing impervious surface: 1.76 AC, 76,803 SF acres/square feet	
Proposed impervious surface: 2.7 AC, 117,532 SF acres/square feet	
Nearby River buffer: Yes <input checked="" type="checkbox"/> No <input type="checkbox"/>	Wetlands: Yes <input type="checkbox"/> No <input checked="" type="checkbox"/>
Flood Hazard Area: Yes <input checked="" type="checkbox"/> No <input type="checkbox"/>	If yes, Alluvial soils: cm
Flood Study:	FEMA Map Panel #: 37207900K & 372017000K
Total disturbed area: 4.6 AC, 207,625 SF acres/square feet	
Parcel PIN Numbers: 0796927055, 0796927362, 0796938363, 0796948139, 0796947012, 0796931463, 0796945483, 0796954128, 0796955666, 0796967079, 1706061345, 1706087302, 0796943425	

CITY OF RALEIGH ENGINEERING SERVICES
CONSTRUCTION MANAGEMENT - PARKS DIVISION
PROJECT MANAGER:
LEXI YATES
219 FAYETTEVILLE ST. SUITE 801
RALEIGH, NC 27601
919-996-3762
lexi.yates@raleighnc.gov

INFRASTRUCTURE INSPECTIONS QUANTITIES TABLE			
Phase Number(s)	PHASE 1	PHASE 2	PHASE 3
Number of Lot(s)			
Lot Number(s) by Phase			
Number of Units			
Livable Buildings			
Open Space?			
Number of Open Space Lots			
Public Water (LF)			
Public Sewer (LF)			
Public Force Main (LF)			
Private Sewer** (LF)			
Public Street (LF) - FULL			
Public Street (LF) - PARTIAL			
Public Sidewalk (LF) - FULL	184 LF		
Public Sidewalk (LF) - PARTIAL			
Multi-Use Path*** (LF)			
Public Stormdrain (LF)			
Street Signs (LF)			
Water Service Stubs			
Sewer Service Stubs			
Average Daily Flow per Phase****			

*Water mains 4" and larger.
**Sewer mains and manholes as part of a collection system.
***10 or 12 ft wide path in lieu of sidewalk or a multi-use path as part of a development amenity.
****Entire Project Flow. Based on 75gpd per bedroom for residential (apartments, single family dwelling, townhouse, condos), or based on 15A NCAC 02T .0114 Wastewater Design Flow Rates for Commercial and Industrial.

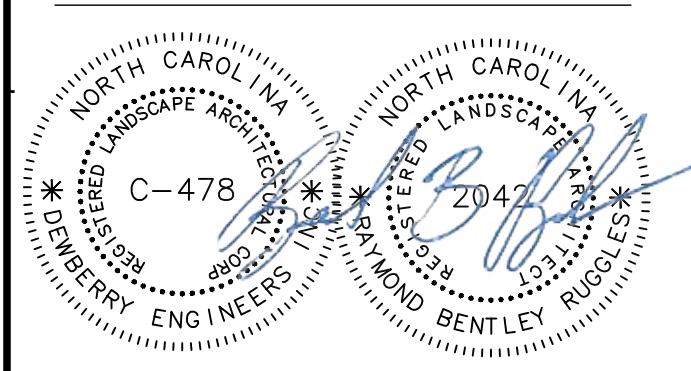


Dewberry Engineers Inc.
2610 WYCLIFF ROAD
SUITE 410
RALEIGH, NC 27607
PHONE: 919.881.9939
FAX: 919.881.9923
NCBELS #F-0929

CITY OF RALEIGH
PARKS, RECREATION
AND CULTURAL
RESOURCES
DEPARTMENT

MINE CREEK
GREENWAY
IMPROVEMENTS

CITY OF RALEIGH
RALEIGH, NC 27612



SITE PERMIT REVIEW

No.	DATE	BY	Description
1	11/20/25	COR	COR 65% REVIEW

DRAWN BY: ESH
APPROVED BY: RBR
CHECKED BY: TM
DATE: 01/28/2026

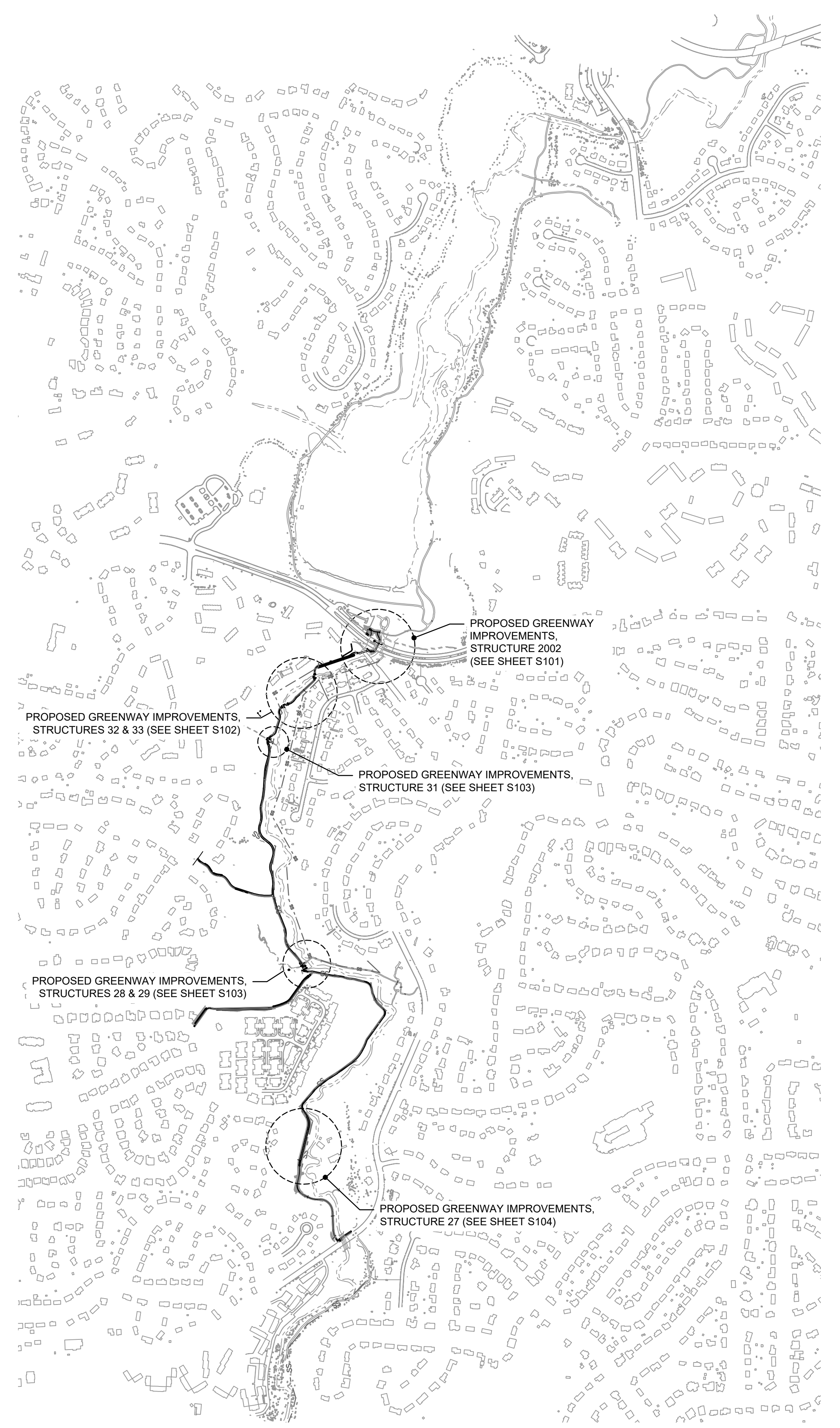
TITLE: COVER SHEET

PROJECT NO. 50185045

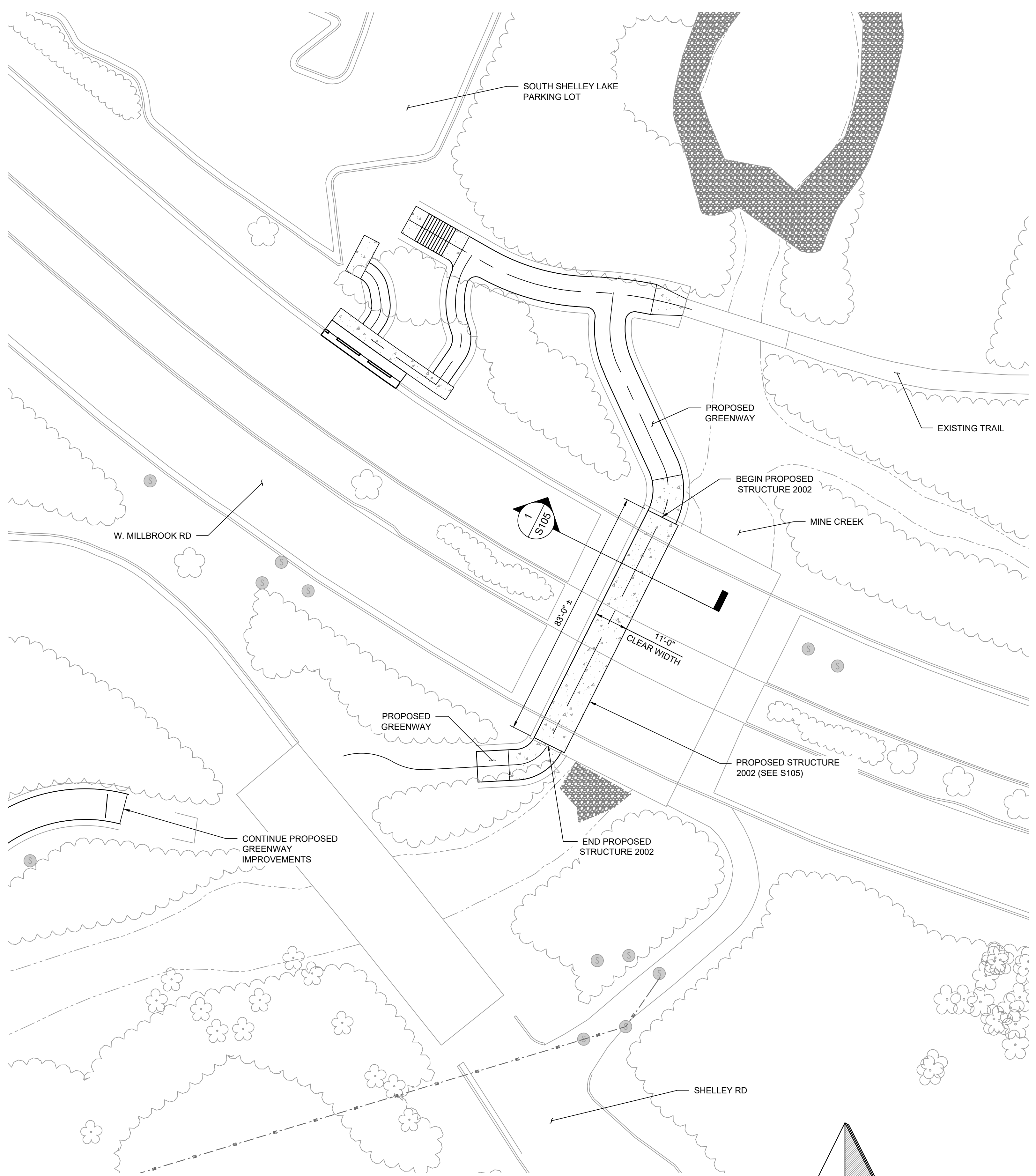
G001

SHEET NO.

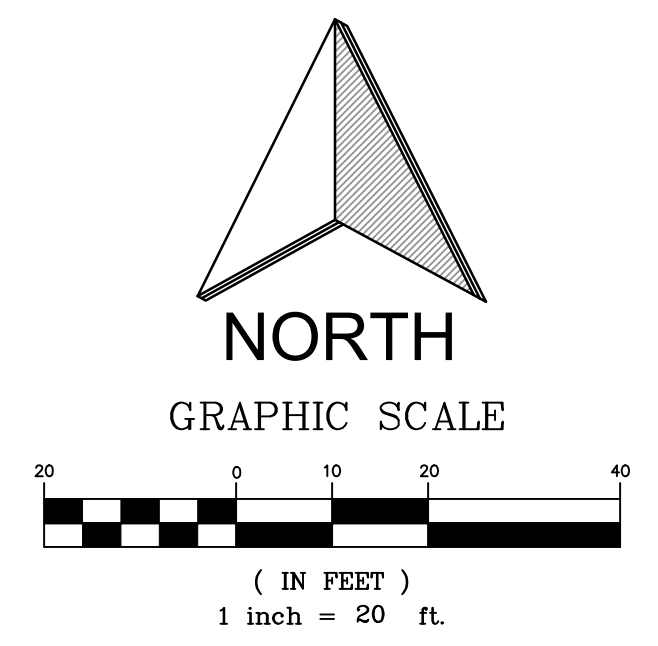
E
D
C
B
A



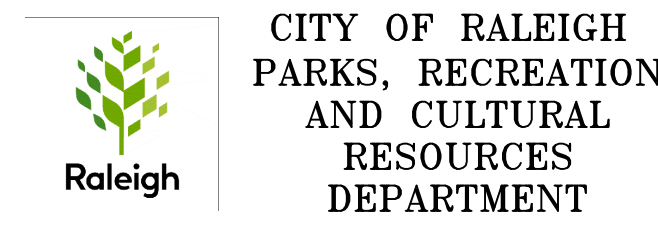
1 OVERALL PROJECT PLAN VIEW
S101 SCALE: 1" = 600'



2 STRUCTURE 2002 PLAN VIEW
S101 SCALE: 1" = 20'



Dewberry Engineers Inc.
2610 WYCLIFF ROAD
SUITE 410
RALEIGH, NC 27607
PHONE: 919.881.9939
FAX: 919.881.9923
NCBELS #F-0929



MINE CREEK GREENWAY IMPROVEMENTS
CITY OF RALEIGH
RALEIGH, NC 27612

SEAL

 2/6/2026

PERMIT DRAWINGS
DO NOT USE FOR CONSTRUCTION

No.	DATE	BY	Description

REVISIONS
 DRAWN BY: A.M. TYSINGER
 APPROVED BY: Z.H. BROWN
 CHECKED BY: Z.H. BROWN
 DATE: FEBRUARY 5, 2026
 TITLE:

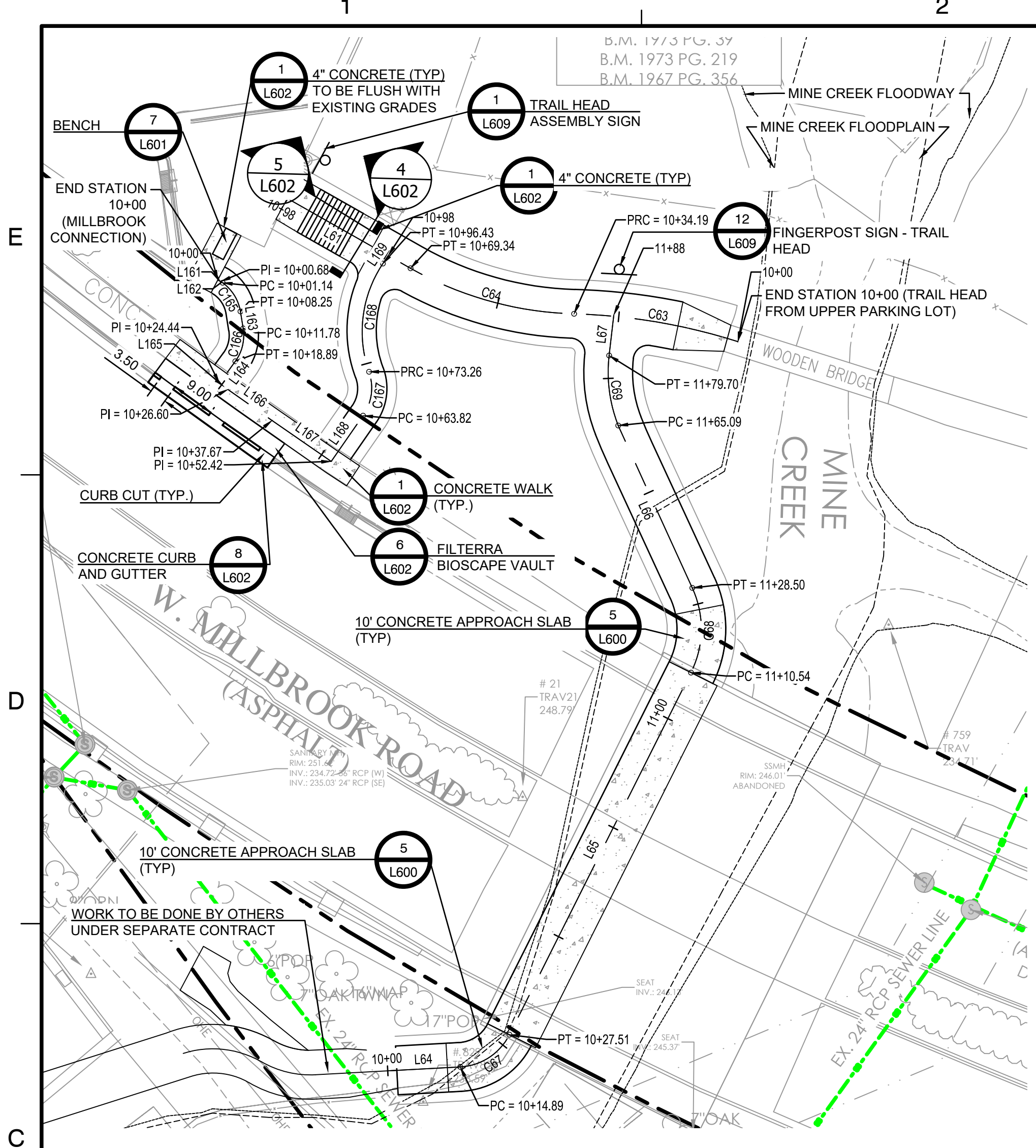
PLAN VIEW

PROJECT NO. 50185045

S101

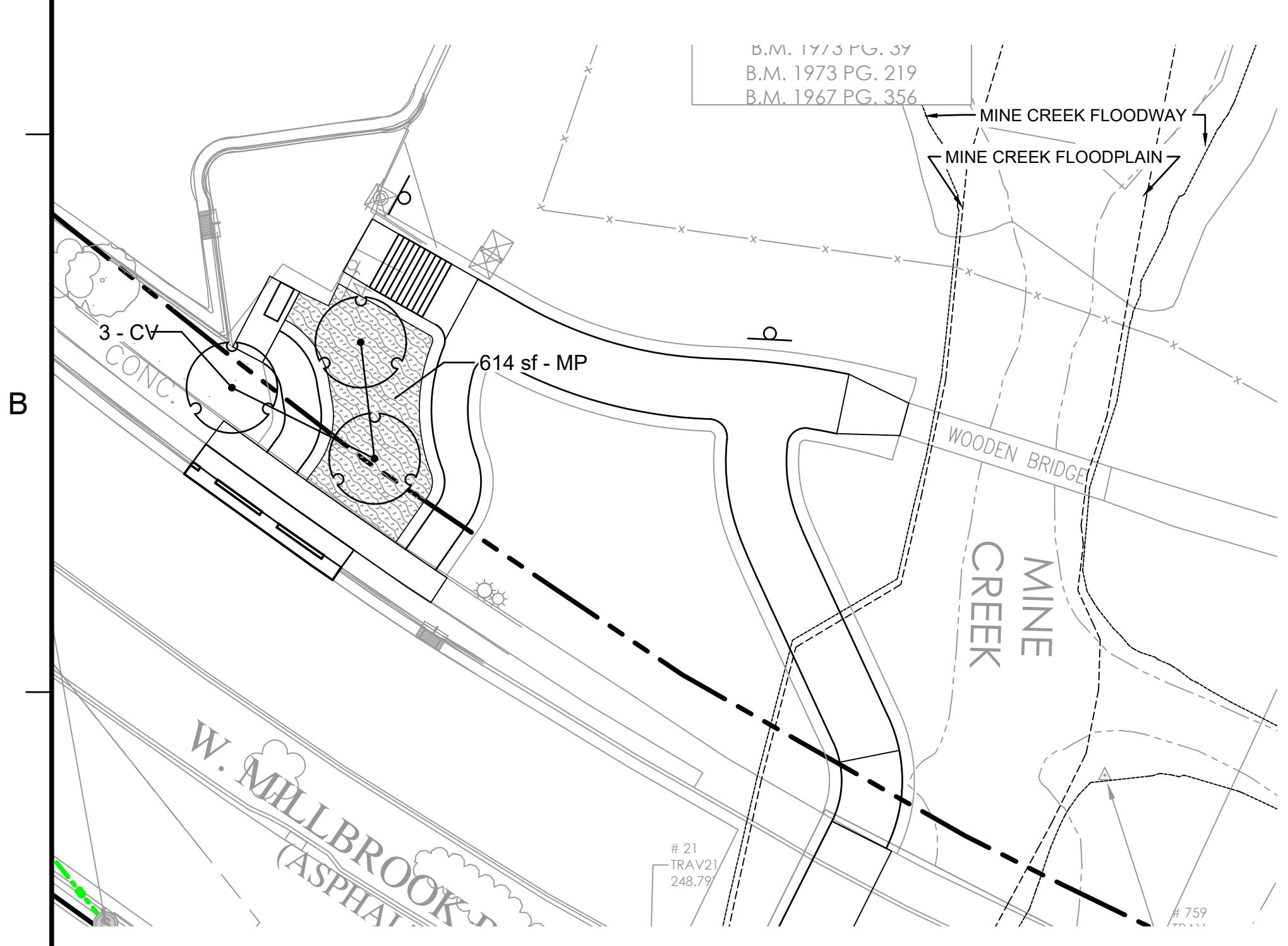
SHEET NO.





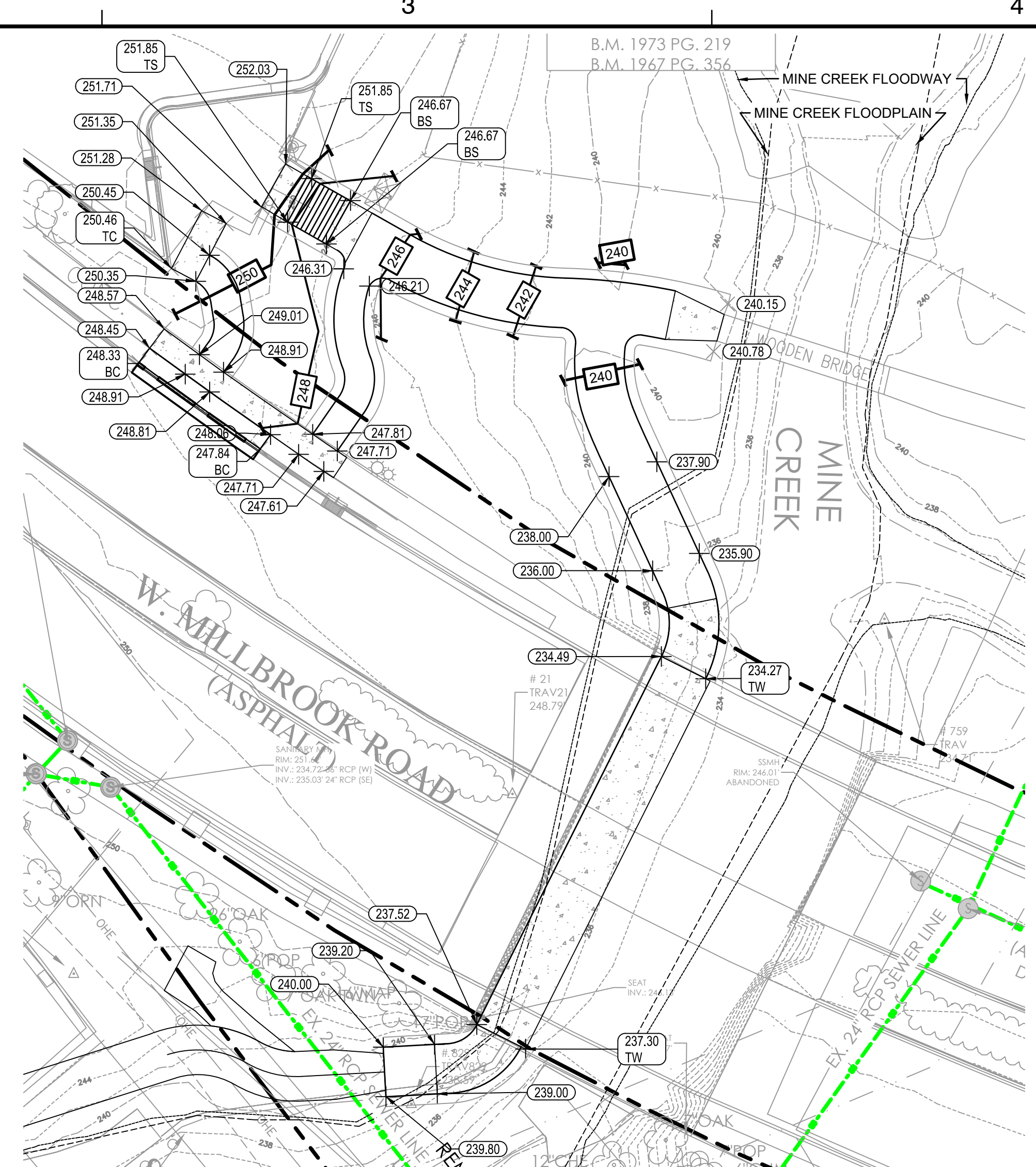
SITE PLAN ENLARGEMENT - TRAIL HEAD

1:20 SCALE



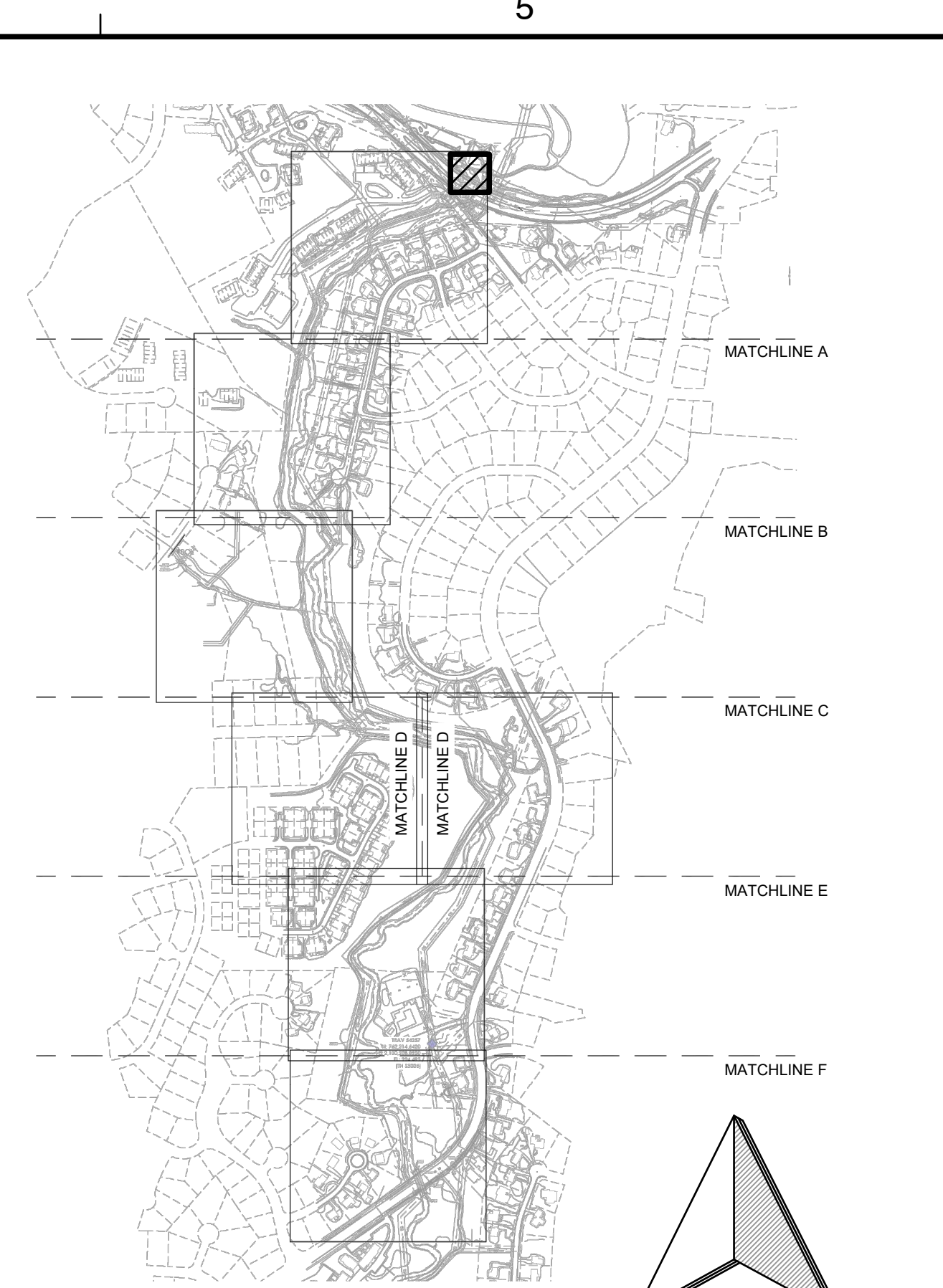
LANDSCAPE PLAN ENLARGEMENT - TRAIL HEAD

1:20 SCALE

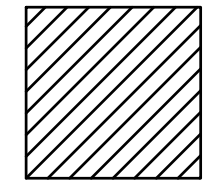


GRADING PLAN ENLARGEMENT - TRAIL HEAD

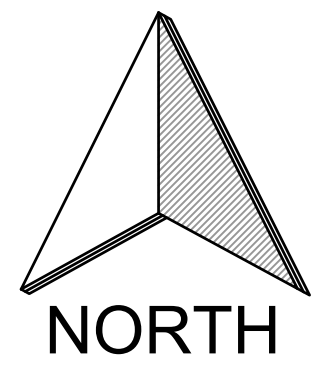
1:20 SCALE



KEY MAP (NTS)



SHEET AREA

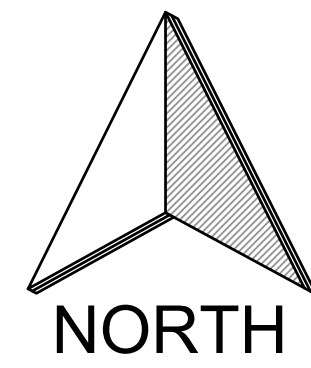
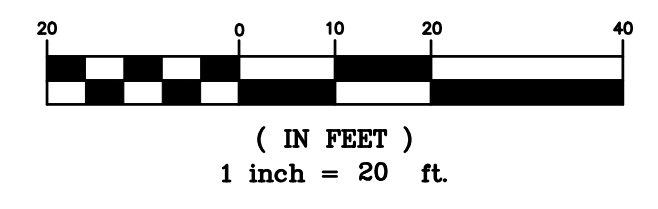


NORTH

NOTES:

1. SEE SHEET G002 FOR STANDARD NOTES.
2. SEE SHEET G100 FOR EXISTING CONDITIONS.
3. SEE SHEET L200 FOR OVERALL SITE PLAN.
4. SEE SHEET L208 FOR FULL LIST OF LINE AND CURVE TABLES.
5. SEE SHEET L604 FOR LANDSCAPE DETAILS AND PLANT LIST.
6. ALL DIMENSIONS SHOWN ARE FACE TO FACE OR EDGE OF PAVEMENT TO EDGE OF PAVEMENT UNLESS OTHERWISE NOTED.
7. POINT ELEVATIONS WILL BE CONSIDERED IN DISCREPANCIES BETWEEN CONTOUR LINES AND POINT ELEVATIONS.
8. CROSS SLOPES WILL NOT BE MORE THAN 2%.

GRAPHIC SCALE



NORTH



Know what's below.
Call before you dig.

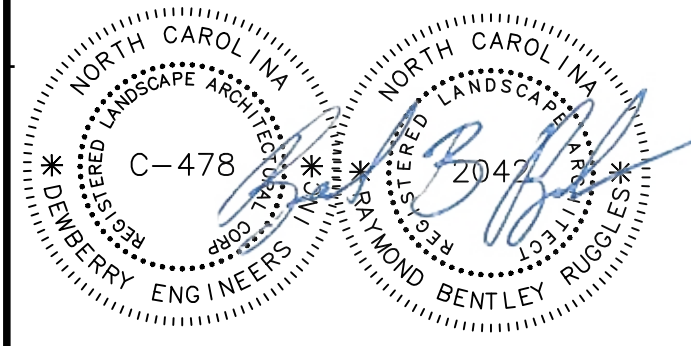


Dewberry Engineers Inc.
2610 WYCLIFF ROAD
SUITE 410
RALEIGH, NC 27607
PHONE: 919.881.9939
FAX: 919.881.9923
NCBELS #F-0929



CITY OF RALEIGH
PARKS, RECREATION
AND CULTURAL
RESOURCES
DEPARTMENT

**MINE CREEK
GREENWAY
IMPROVEMENTS**
 CITY OF RALEIGH
 RALEIGH, NC 27612



SITE PERMIT REVIEW

1	11/20/25	COR	COR 65% REVIEW
No.	DATE	BY	Description

REVISIONS

DRAWN BY: ESH

APPROVED BY: RBR

CHECKED BY: TM

DATE: 01/28/2026

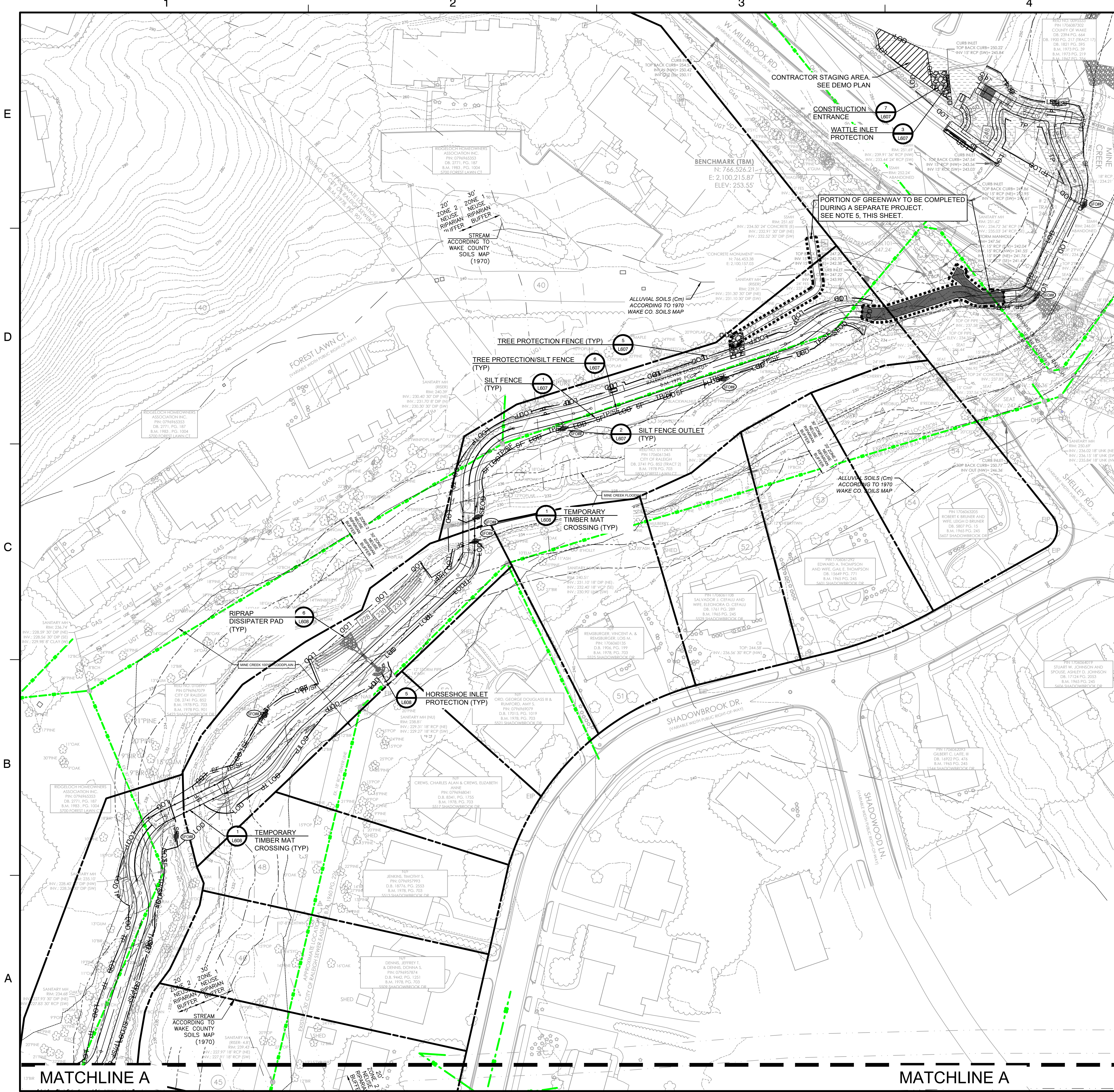
TITLE

**SITE PLAN
ENLARGEMENT -
TRAIL HEAD**

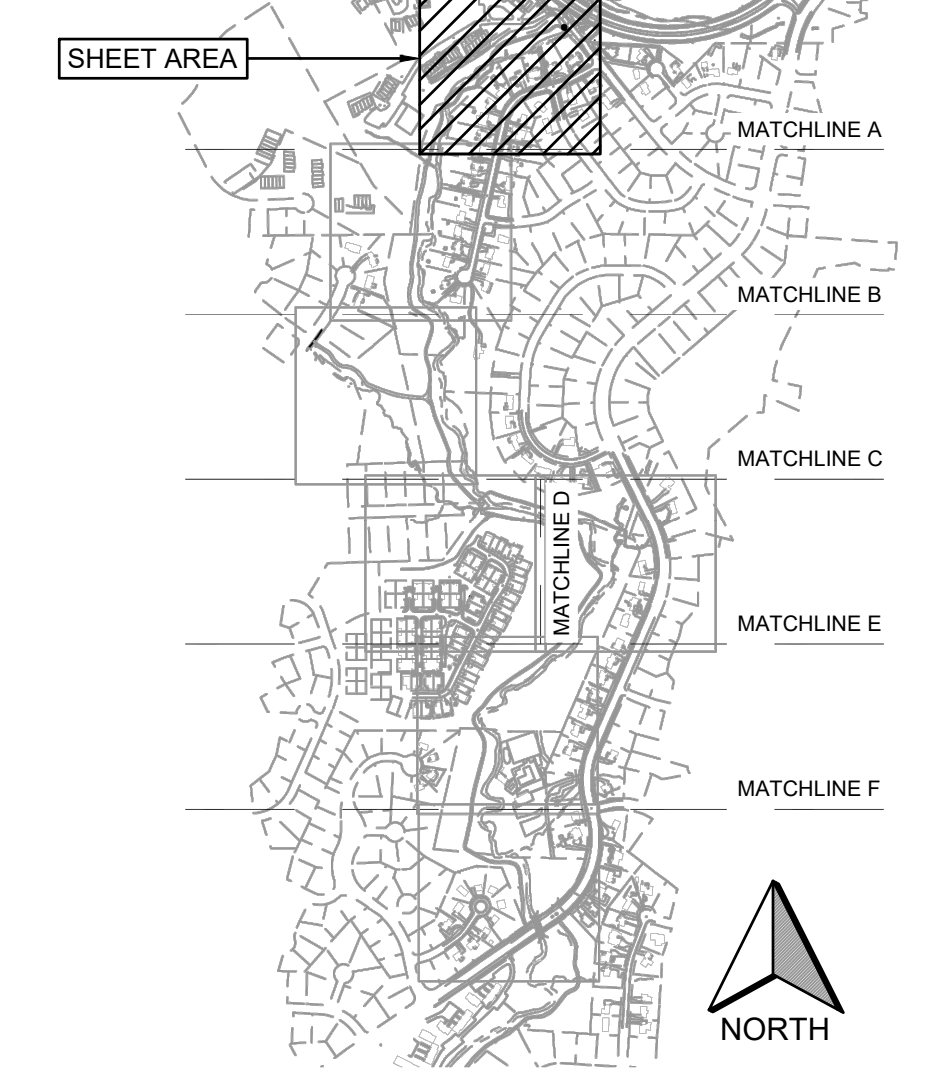
PROJECT NO. 50185045

L500

SHEET NO.



KEY MAP
1" = 1000'

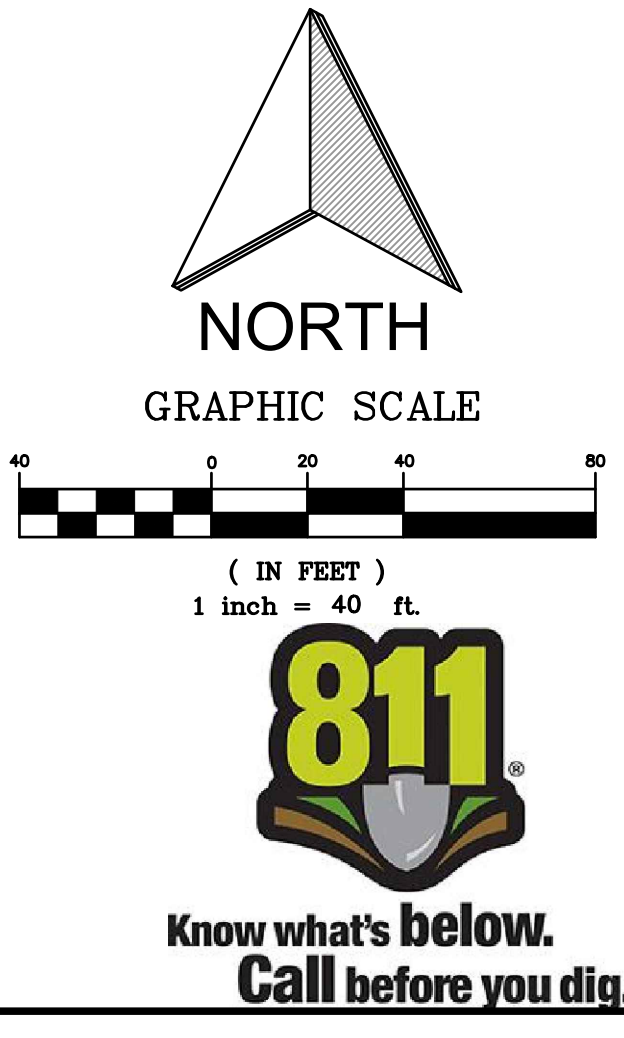


EROSION CONTROL LEGEND

- LOD — LIMITS OF DISTURBANCE
- TP/SF — TREE PROTECTION/SILT FENCE
- TP — TREE PROTECTION FENCE
- SF — SILT FENCE
- >— TEMPORARY DIVERSION DITCH
- — — TEMPORARY BAFFLE FENCE
- ▨ WATTLE
- PS PERMANENT SEEDING
- TS TEMPORARY SEEDING
- IP-HCG TEMPORARY HARDWARE CLOTH AND GRAVEL INLET PROTECTION
- IP-GB GRAVEL BAG CURB INLET PROTECTION
- IP-BI DROP BAG INLET PROTECTION
- IP INLET ROCK PIPE PROTECTION
- SFO# SILT FENCE OUTLET
- CE TEMPORARY CONSTRUCTION ENTRANCE
- CD TEMPORARY ROCK SEDIMENT DAM
- OP RIP-RAP OUTLET PROTECTION
- RECP ROLLED EROSION CONTROL SLOPE STABILIZATION
- WASHRACK
- WO CONCRETE WASHOUT

NOTES:

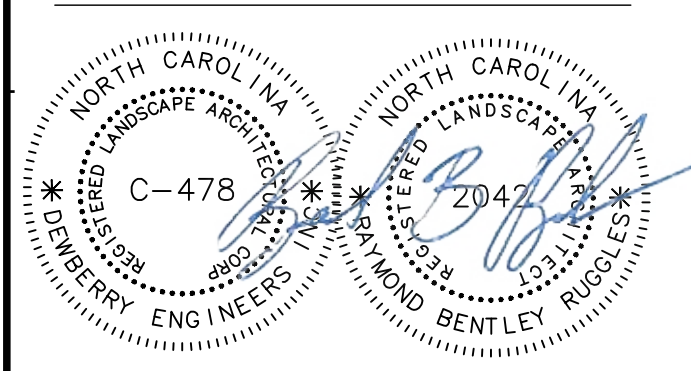
1. SEE SHEET G002 FOR STANDARD NOTES.
2. SEE SHEET G100 FOR EXISTING CONDITIONS.
3. SEE SHEET L200 FOR OVERALL SITE PLAN.
4. THE SHELLEY ROAD BRIDGE REPLACEMENT PROJECT WILL BE COMPLETED BY RALEIGH TRANSPORTATION. GREENWAY IMPROVEMENTS IN THE AREA INDICATED ARE TO BE COMPLETED BY OTHERS. THE CONTRACTOR SHALL COORDINATE FINAL LIMITS OF GREENWAY TRAIL REPLACEMENT.
5. THE TOTAL PROPOSED LIMITS OF DISTURBANCE IS 4.8 AC.



Dewberry
Dewberry Engineers Inc.
2610 WYCLIFF ROAD
SUITE 410
RALEIGH, NC 27607
PHONE: 919.881.9939
FAX: 919.881.9923
NCBELS #F-0929

CITY OF RALEIGH
PARKS, RECREATION
AND CULTURAL
RESOURCES
DEPARTMENT

MINE CREEK GREENWAY IMPROVEMENTS
 CITY OF RALEIGH
 RALEIGH, NC 27612



SITE PERMIT REVIEW

No.	DATE	BY	Description
1	11/20/25	COR	COR 65% REVIEW

REVISIONS

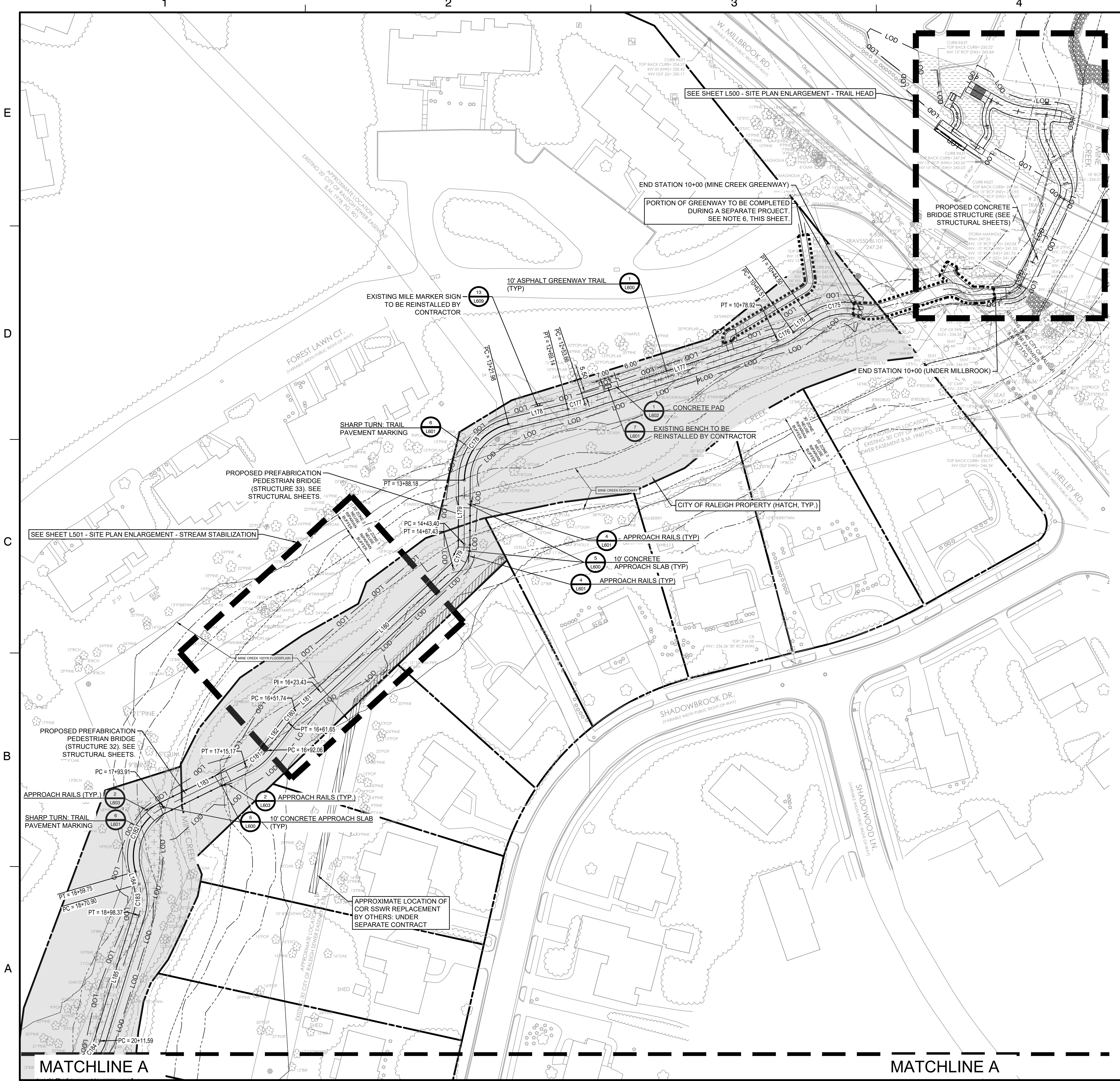
DRAWN BY: ESH
APPROVED BY: RBR
CHECKED BY: TM
DATE: 01/28/2026

EROSION & SEDIMENTATION CONTROL PLAN I (SHEET 1 OF 7)

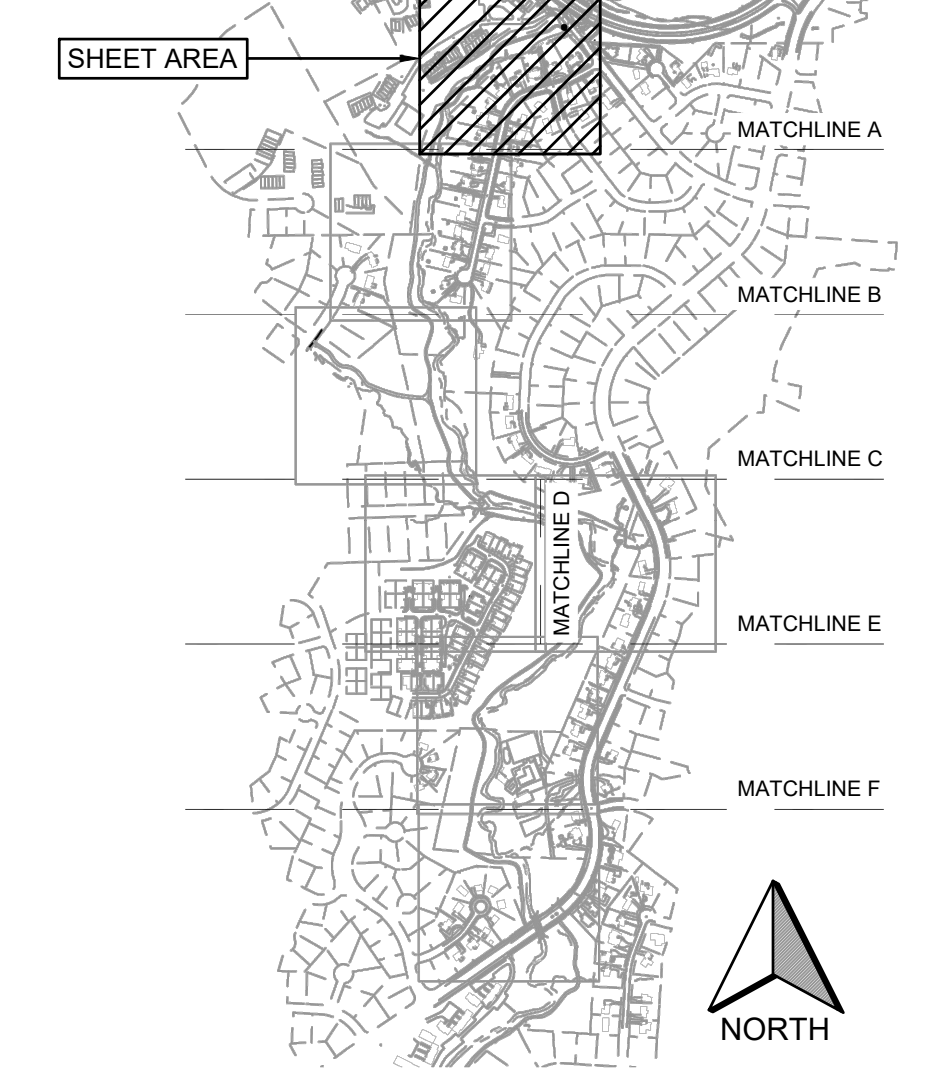
PROJECT NO. 50185045

L401

SHEET NO.



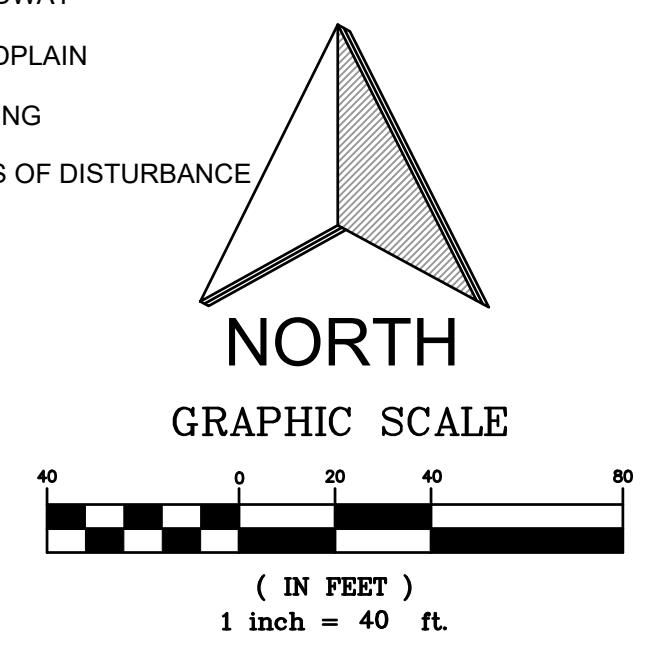
KEY MAP
1" = 1000'



- NOTES:**
- SEE SHEET G002 FOR STANDARD NOTES.
 - SEE SHEET G100 FOR EXISTING CONDITIONS.
 - SEE SHEET L200 FOR OVERALL SITE PLAN.
 - SEE SHEET L500 FOR ENLARGEMENTS.
 - ALL DIMENSIONS SHOWN ARE FACE TO FACE OR EDGE OF PAVEMENT TO EDGE OF PAVEMENT UNLESS OTHERWISE NOTED.
 - THE SHELLEY ROAD BRIDGE REPLACEMENT PROJECT WILL BE COMPLETED BY RALEIGH TRANSPORTATION. GREENWAY IMPROVEMENTS IN THE AREA INDICATED ARE TO BE COMPLETED BY OTHERS. THE CONTRACTOR SHALL COORDINATE FINAL LIMITS OF GREENWAY TRAIL REPLACEMENT.
 - SEE SHEET L208 FOR LINE AND CURVE TABLES.

- HATCH LEGEND**
- PROPERTY OF CITY OF RALEIGH
 - EXISTING GREENWAY EASEMENT
 - PROPOSED GREENWAY EASEMENT
 - APPROXIMATE OVERLAP WITH COR WATER SSWR REHABILITATION
 - PROPOSED TEMPORARY CONSTRUCTION EASEMENT

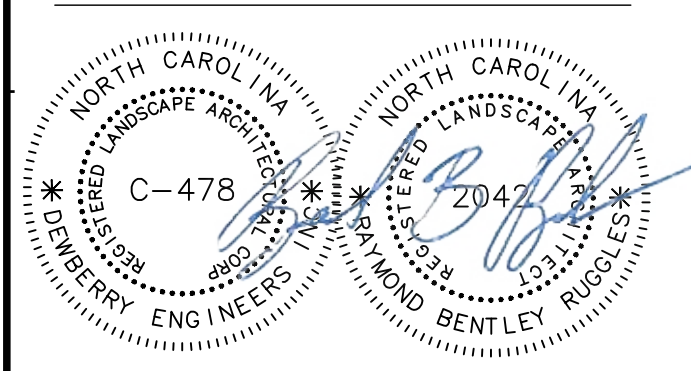
- SITE LEGEND**
- CONCRETE
 - EXISTING PROPERTY LINE
 - EXISTING TREE LINE
 - PROPOSED TREELINE
 - FLOODWAY
 - FLOODPLAIN
 - FENCING
 - LIMITS OF DISTURBANCE SIGN



Dewberry
Dewberry Engineers Inc.
2610 WYCLIFF ROAD
SUITE 410
RALEIGH, NC 27607
PHONE: 919.881.9939
FAX: 919.881.9923
NCBELS #F-0929

Raleigh
CITY OF RALEIGH
PARKS, RECREATION
AND CULTURAL
RESOURCES
DEPARTMENT

MINE CREEK GREENWAY IMPROVEMENTS
CITY OF RALEIGH
RALEIGH, NC 27612



SITE PERMIT REVIEW

No.	DATE	BY	Description
1	11/20/25	COR	COR 65% REVIEW
REVISIONS			
DRAWN BY: ESH			
APPROVED BY: RBR			
CHECKED BY: TM			
DATE: 01/28/2026			
TITLE:			

SITE PLAN (SHEET 1 OF 7)

PROJECT NO. 50185045

L201

SHEET NO.



EXISTING CONDITIONS LEGEND

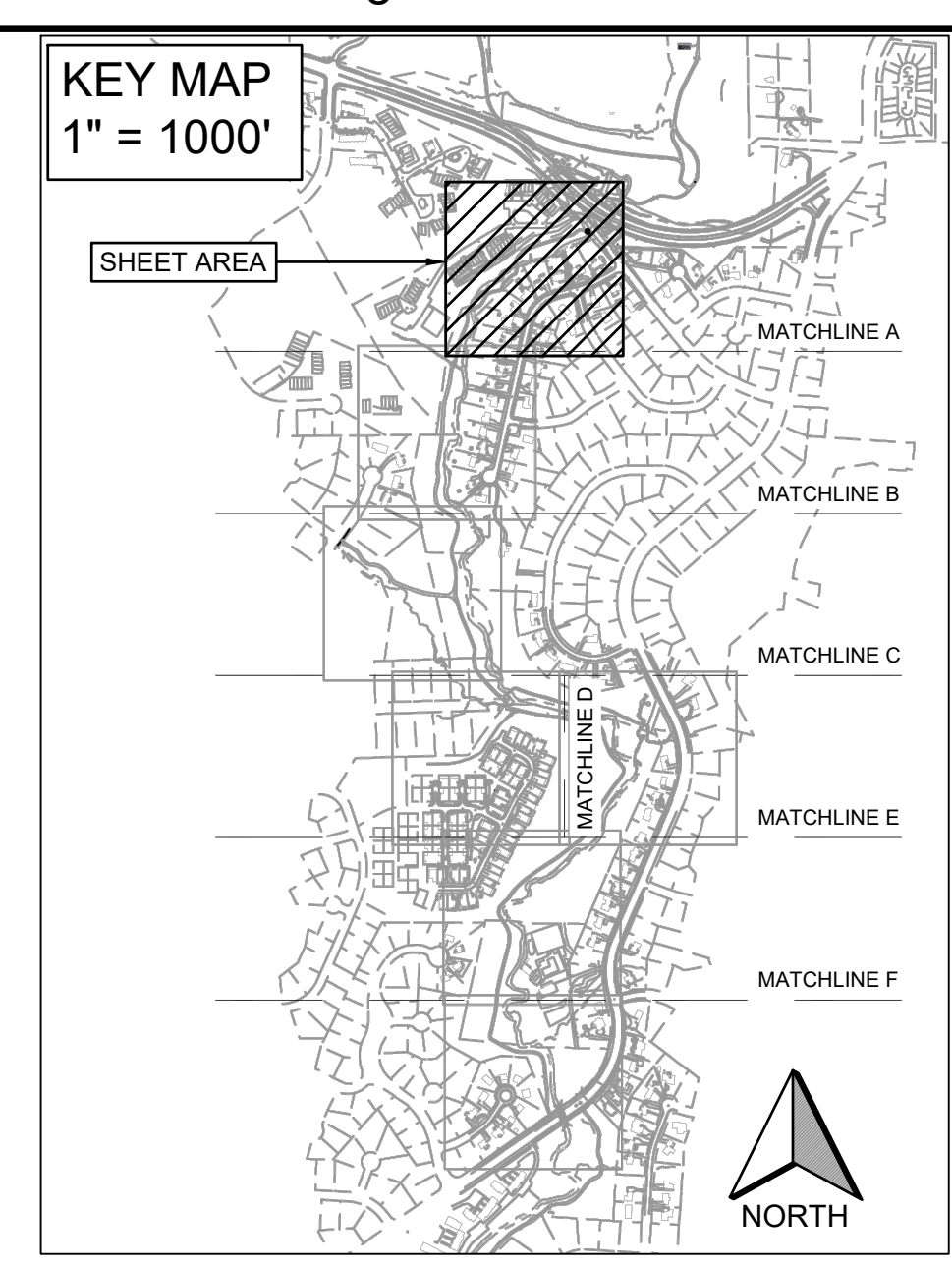
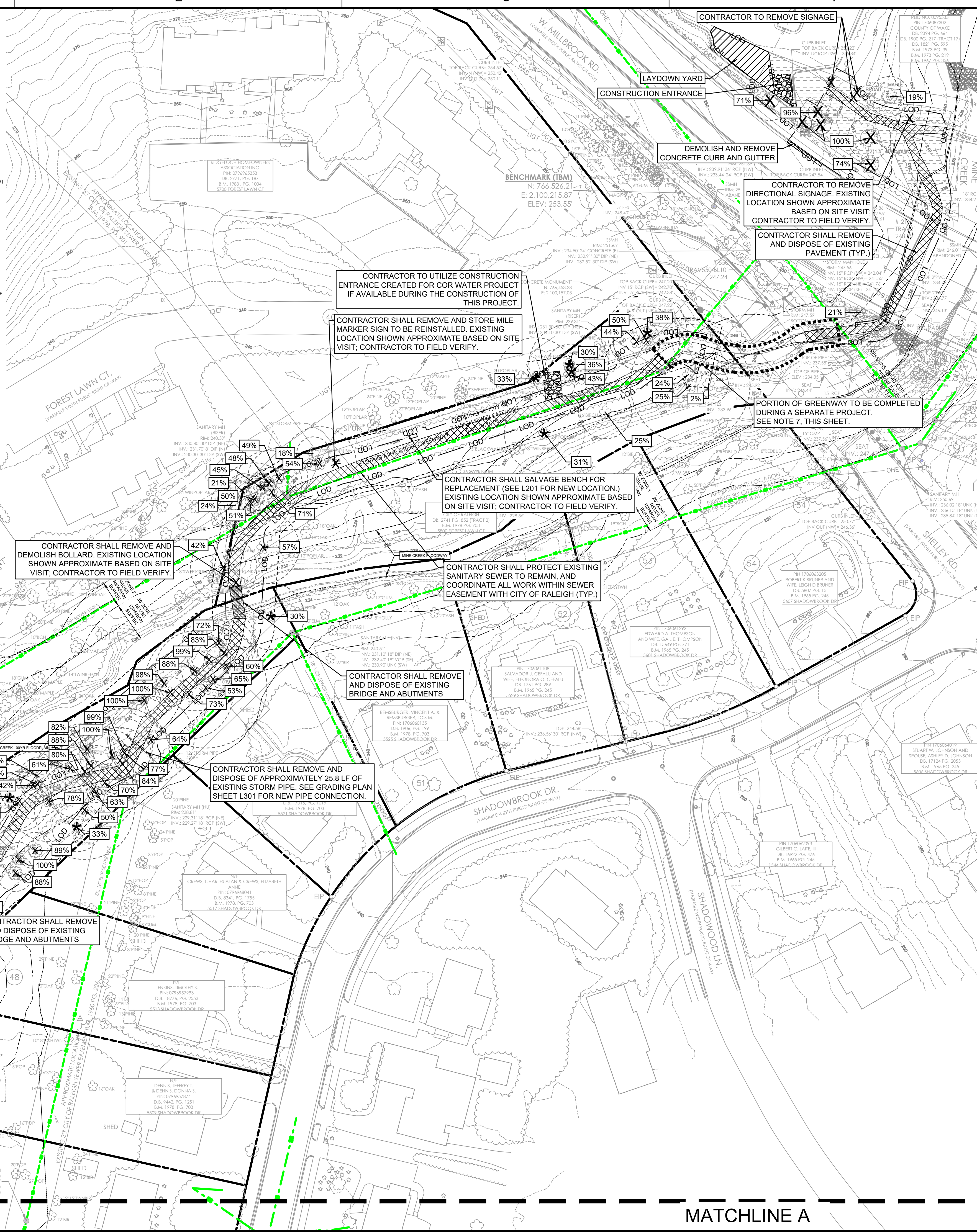
- PROPERTY MONUMENT
- GPS CONTROL POINT
- W/CL/CONCRETE MONUMENT
- PAGE
- DEED BOOK
- BOOK OF MAPS
- CORRUGATED METAL PIPE
- DUCTILE IRON PIPE
- REINFORCED CONCRETE PIPE
- NOW OR FORMERLY
- INVERT
- SANITARY SEWER MANHOLE
- CLEANOUT
- STORMWATER MANHOLE
- CATCH BASIN
- ROUND DROP INLET
- DROP INLET
- POWER POLE
- LIGHT POLE
- TRANSFORMER
- ELECTRIC BOX
- ELECTRIC METER/PANEL
- SITE LEVEL CHANGE OF SERVICE
- CUT WIRE
- ELECTRIC HAND HOLE
- TELEPHONE FEDESTAL
- CABLE FEDESTAL
- FIBER OPTIC FEDESTAL
- FIRE HYDRANT
- WATER VALVE
- WATER METER
- WATER MANHOLE
- BOUNDARY SIGN/POLE/POST
- GATE POST
- SIGN
- CAS METER
- GTS
- PANEL
- POWER HANDHOLE
- HDPE EXISTING HIGH DENSITY POLY ETHYLENE PIPE
- FC FLARED END SECTION
- CONC CONCRETE
- CFP CORRUGATED PLASTIC PIPE

DEMOLITION LEGEND

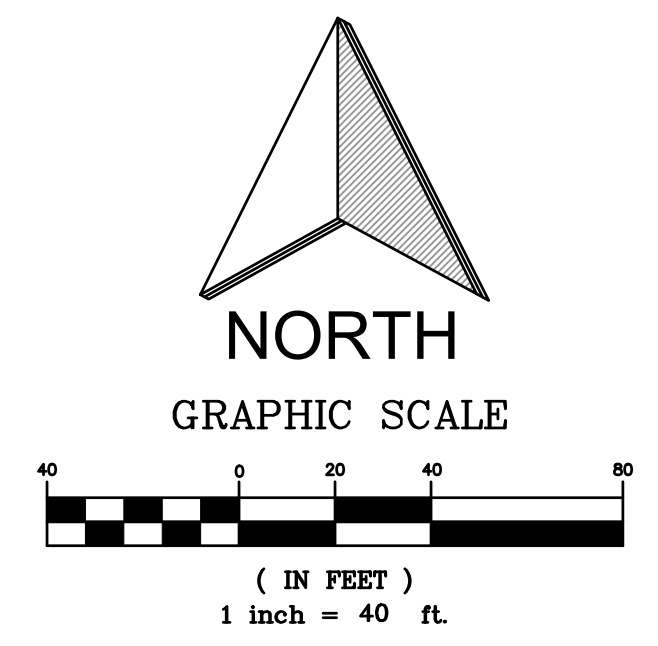
- ASPHALT TRAIL DEMOLITION
- BRIDGE/BOARDWALK DEMOLITION
- GRAVEL TRAIL DEMOLITION
- CONCRETE DEMOLITION

URBAN FORESTRY LEGEND:

- PERCENT OF CRITICAL ROOT ZONE DISTURBED
- 10' BEYOND LOD
- CRITICAL ROOT ZONE



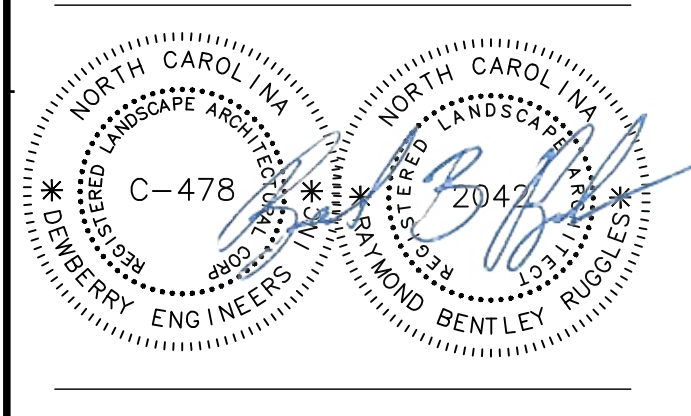
- NOTES:**
- SEE SHEET G002 FOR STANDARD NOTES.
 - SEE SHEET G100 FOR OVERALL EXISTING CONDITIONS.
 - SEE SHEET L200 FOR OVERALL SITE PLAN.
 - ALL EXISTING UTILITIES MAY NOT BE SHOWN. THE CONTRACTOR SHALL VISIT THE SITE AND VERIFY THE PRESENCE OF UTILITIES. THE CONTRACTOR SHALL ADJUST ANY EXISTING UTILITIES TO REMAIN TO THE PROPOSED FINISHED GRADE.
 - NOT ALL EXISTING VEGETATION IS SHOWN. CONTRACTOR TO REVIEW PLANS, LIMITS OF DISTURBANCE, AND VISIT SITE TO VERIFY VEGETATION TO BE REMOVED. NO INCREASE IN CONTRACT VALUE SHALL BE CONSIDERED.
 - SAWCUT ASPHALT AND CONCRETE LEAVING CLEAN, NEAT EDGES. REMOVE ALL CONCRETE TO THE NEAREST JOINT. DEMOLITION LIMITS FOR CONCRETE ITEMS ARE APPROXIMATE. CONTRACTOR IS RESPONSIBLE FOR FIELD VERIFYING REMOVAL LIMITS TO THE NEAREST JOINT.
 - THE SHELLEY ROAD BRIDGE REPLACEMENT PROJECT WILL BE COMPLETED BY RALEIGH TRANSPORTATION. GREENWAY IMPROVEMENTS IN THE AREA INDICATED ARE TO BE COMPLETED BY OTHERS. THE CONTRACTOR SHALL COORDINATE FINAL LIMITS OF DEMOLITION.
 - CONTRACTOR TO LEAVE STUMPS IN PLACE FOR TREES REMOVED OUTSIDE THE LIMITS OF DISTURBANCE.
- RIGHT-OF-WAY OBSTRUCTION NOTES:**
- LANE AND SIDEWALK CLOSURES OR DETOURS: PRIOR TO ANY LANE OR SIDEWALK OBSTRUCTION, THE CONTRACTOR OR ENGINEER SHALL SUBMIT A TRAFFIC CONTROL AND/OR PEDESTRIAN PLAN ALONG WITH A RIGHT-OF-WAY SERVICES APPLICATION TO REQUEST THE OBSTRUCTION PRIOR TO THE START OF WORK. RIGHTOFWAYSERVICES@RALEIGHNC.GOV FOR APPROVAL.
 - THE CITY OF RALEIGH REQUIRES AN APPROVED RIGHT-OF-WAY OBSTRUCTION PERMIT FOR WORK ON ANY PUBLIC STREET OR SIDEWALK AND NCDOT ROAD WITHIN RALEIGH'S JURISDICTION.
 - ALL TRAFFIC CONTROL SIGNAGE AND PRACTICES SHALL ADHERE TO THE MANUAL ON UNIFORM TRAFFIC CONTROL, AND THE LATEST EDITION OF THE NCDOT "STANDARD SPECIFICATION FOR ROADWAY STRUCTURES", NCDOT "ROADWAY STANDARD DRAWING MANUAL", AND THE NCDOT SUPPLEMENT TO THE MUTCD.
 - ALL PUBLIC SIDEWALKS MUST BE ACCESSIBLE TO PEDESTRIANS WHO ARE VISUALLY IMPAIRED AND/OR PEOPLE WITH MOBILITY CONCERNS. EXISTING AND ALTERNATIVE PEDESTRIAN ROUTES DURING CONSTRUCTION SHALL BE REQUIRED TO BE COMPLIANT WITH THE PUBLIC RIGHTS OF WAY ACCESSIBILITY GUIDELINES (PROWAG), THE ADA STANDARDS FOR ACCESSIBLE DESIGN AND THE MANUAL ON UNIFORM TRAFFIC CONTROL DEVICES (MUTCD).
 - PRIOR TO THE START OF WORK, THE CLIENT SHALL SCHEDULE A PRE-CONSTRUCTION MEETING WITH THE ENGINEERING INSPECTIONS COORDINATOR TO REVIEW THE SPECIFIC COMPONENTS OF THE APPROVED PLAN, AND ENSURE ALL PERMITS ARE ISSUED.
 - ALL PERMITS MUST BE AVAILABLE AND VISIBLE ON SITE DURING THE OPERATION.



Dewberry
Dewberry Engineers Inc.
2610 WYCLIFF ROAD
SUITE 410
RALEIGH, NC 27607
PHONE: 919.881.9939
FAX: 919.881.9923
NCBELS #F-0929

Raleigh
CITY OF RALEIGH
PARKS, RECREATION
AND CULTURAL
RESOURCES
DEPARTMENT

**MINE CREEK
GREENWAY
IMPROVEMENTS**
CITY OF RALEIGH
RALEIGH, NC 27612



SITE PERMIT REVIEW

No.	DATE	BY	Description
1	11/20/25	COR	COR 65% REVIEW

REVISIONS

DRAWN BY: ESH
APPROVED BY: RBR
CHECKED BY: TM
DATE: 01/28/2026

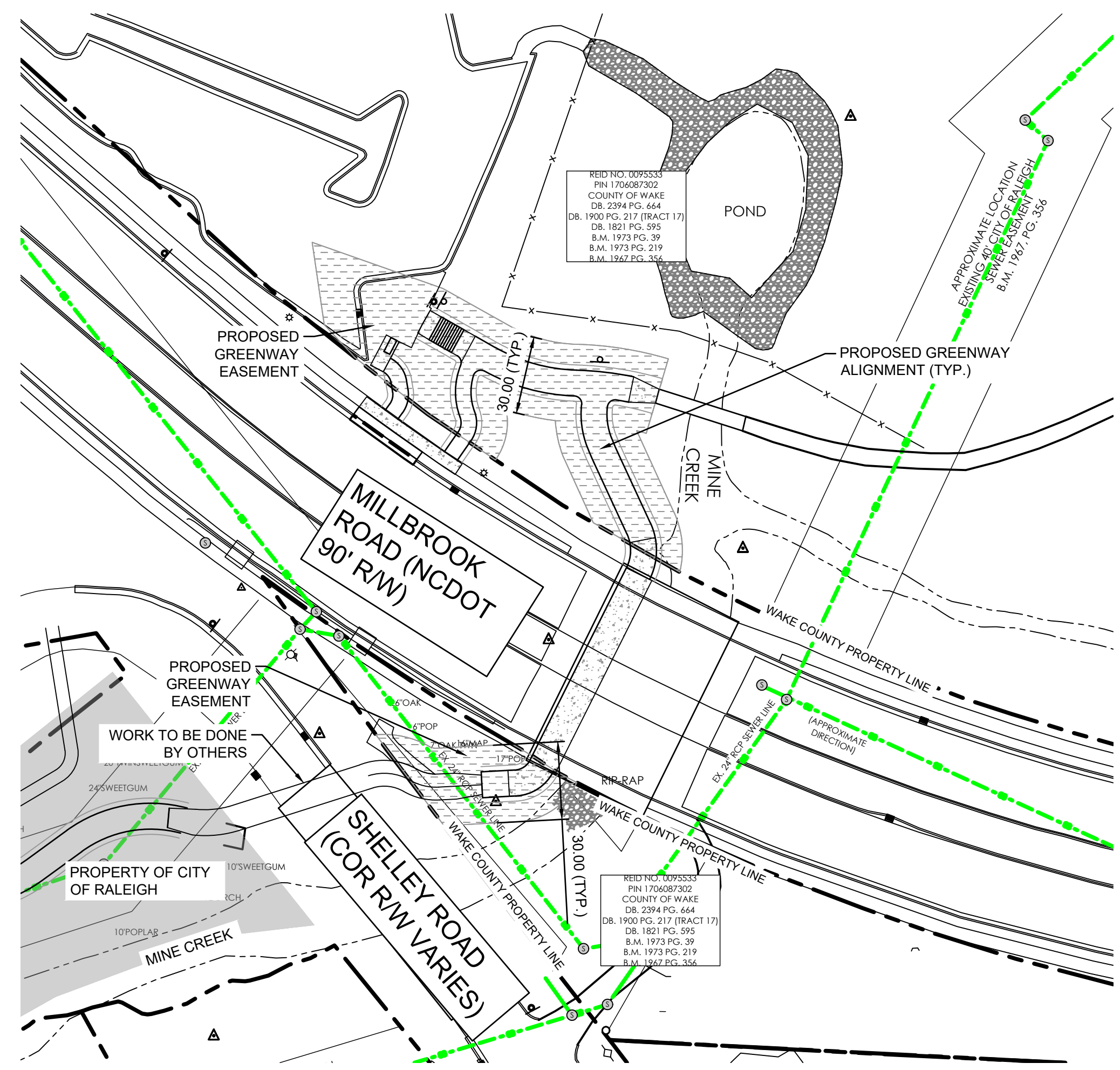
**DEMOLITION
PLAN (SHEET 1
OF 7)**

PROJECT NO. 50185045

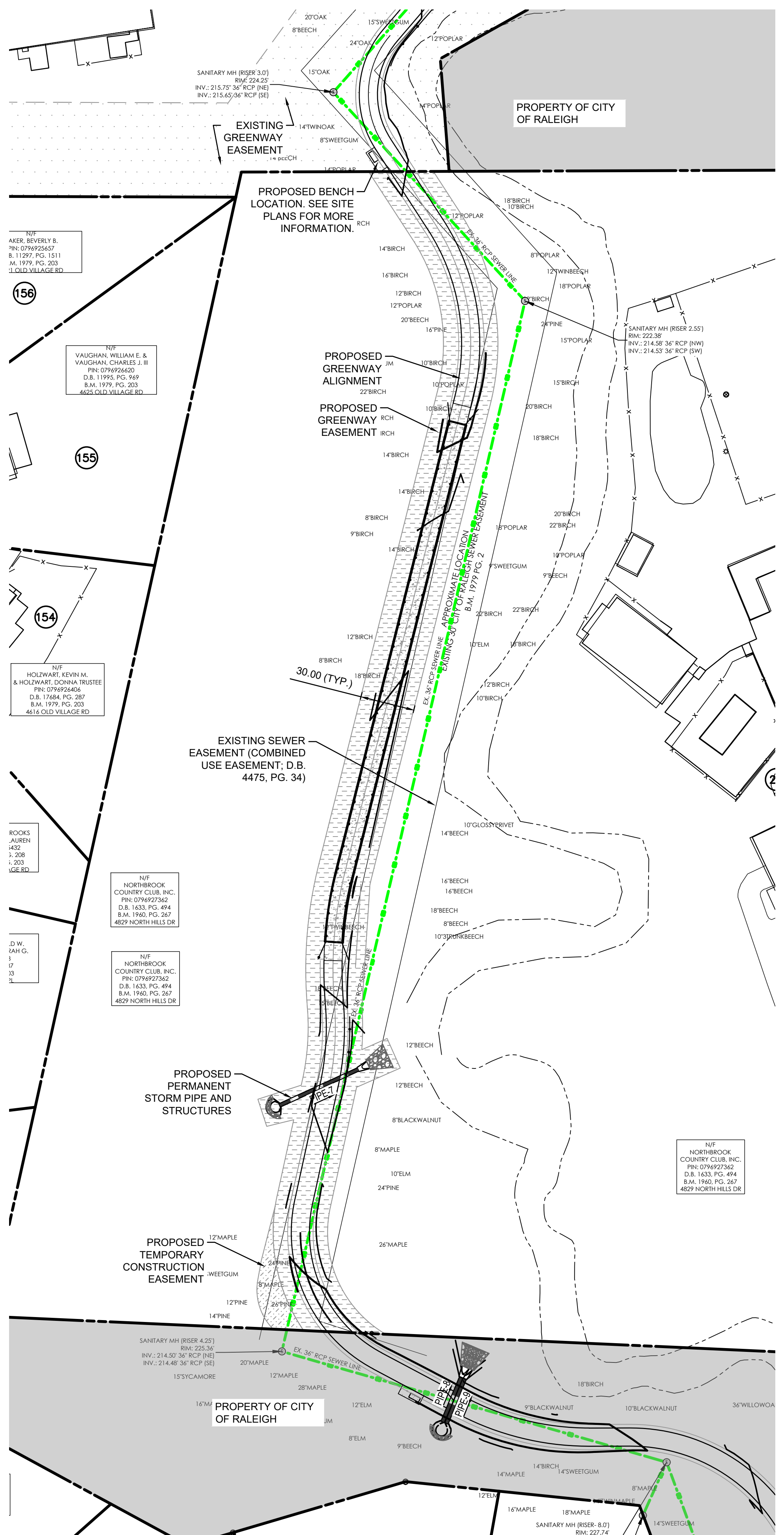
L101

SHEET NO.

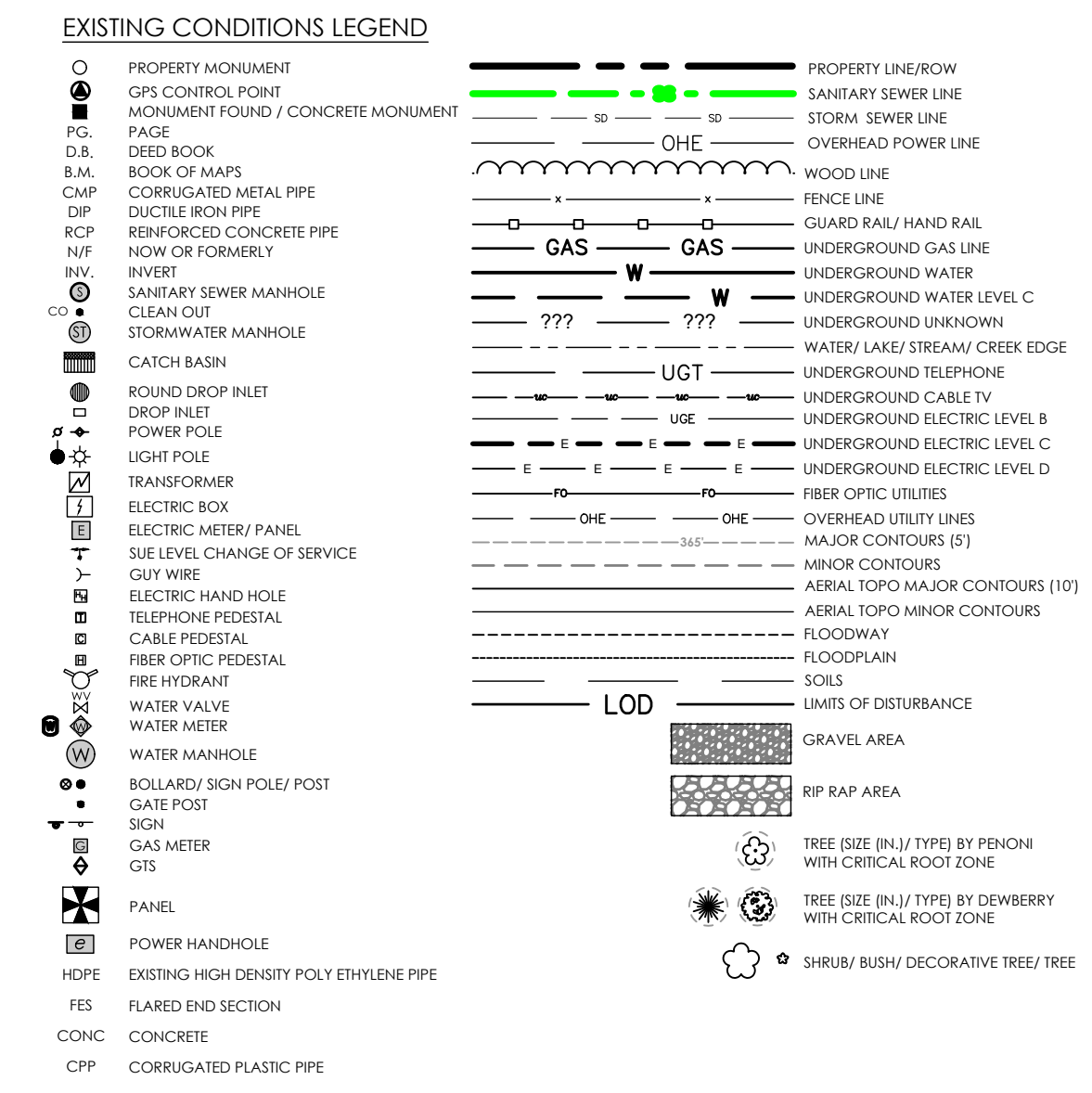
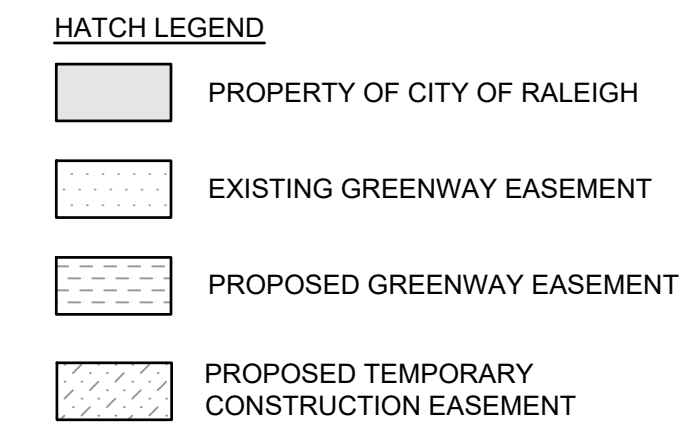
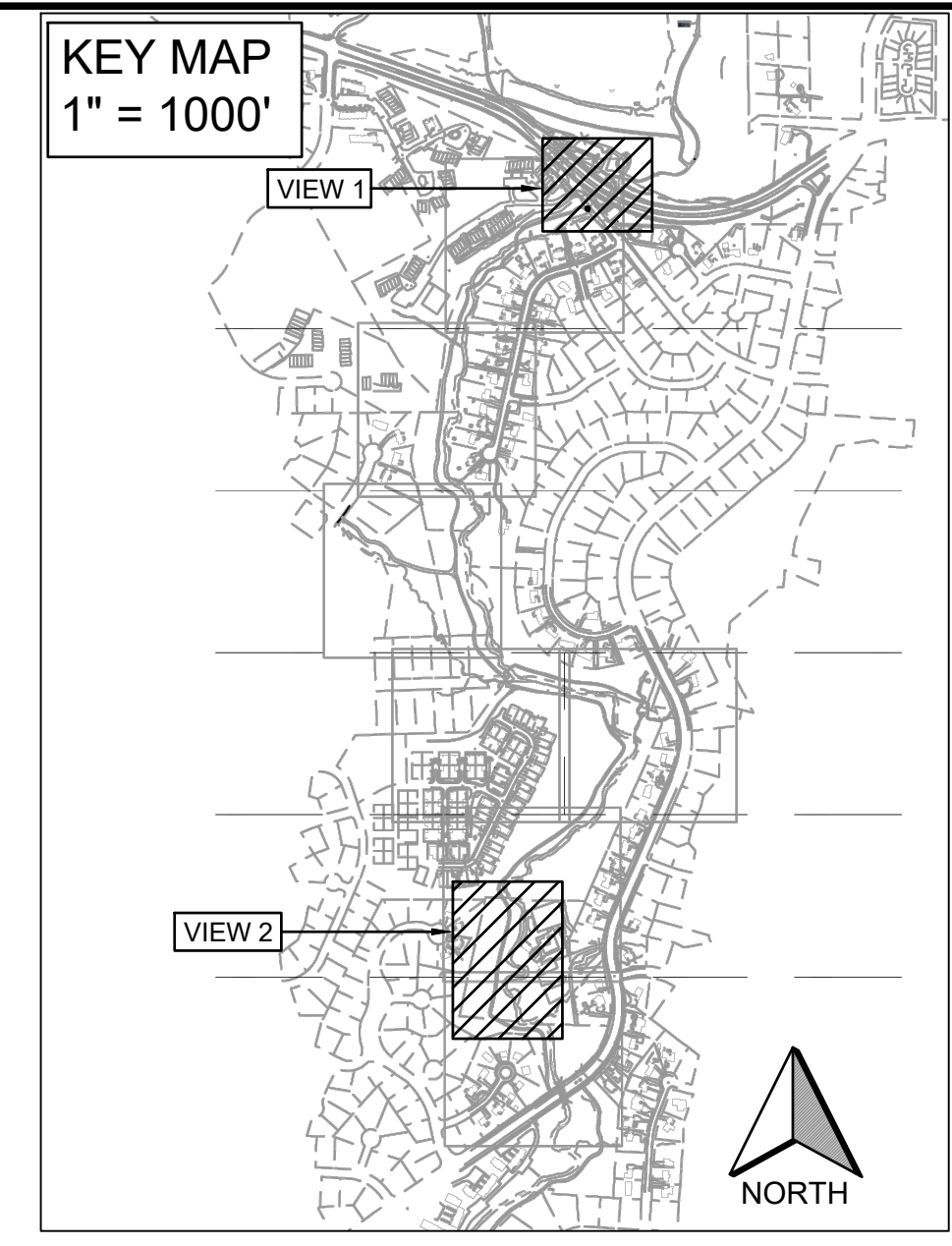




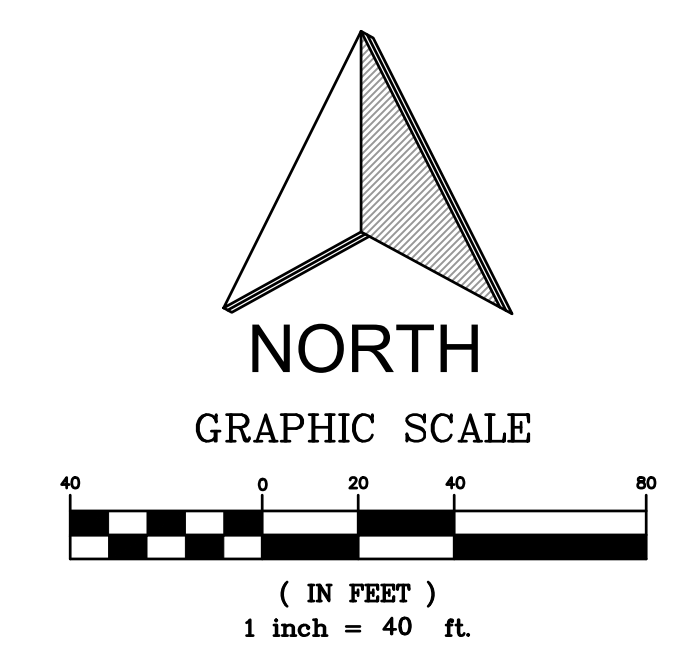
VIEW 1 - WAKE CO. PROPERTY



VIEW 2 - NORTHBROOK COUNTRY CLUB, INC. PROPERTY



- NOTES:**
- SEE SHEET G002 FOR STANDARD NOTES.
 - SEE SHEETS G100 FOR OVERALL EXISTING CONDITIONS.
 - SURVEY COMPLETED BY PENNON JULY 2024. SELECT SECTIONS OF SURVEY COMPLETED BY DEWBERRY APRIL 2025 AS INDICATED ON SHEETS.



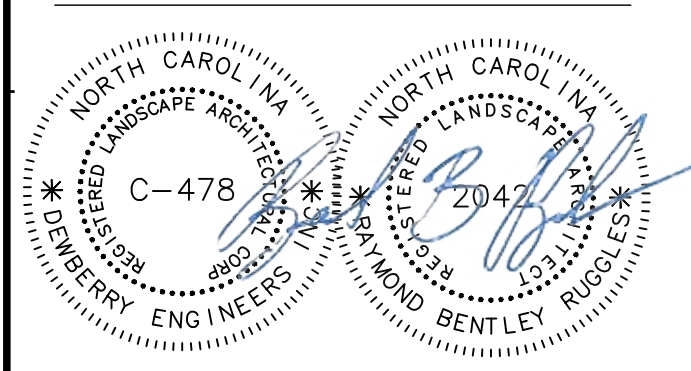
Dewberry

Dewberry Engineers Inc.
2610 WYCLIFF ROAD
SUITE 410
RALEIGH, NC 27607
PHONE: 919.881.9939
FAX: 919.881.9923
NCBELS #F-0929

CITY OF RALEIGH
PARKS, RECREATION
AND CULTURAL
RESOURCES
DEPARTMENT

**MINE CREEK
GREENWAY
IMPROVEMENTS**

CITY OF RALEIGH
RALEIGH, NC 27612



SITE PERMIT REVIEW

No.	DATE	BY	Description
1	11/20/25	COR	COR 65% REVIEW

REVISIONS

DRAWN BY: ESH

APPROVED BY: RBR

CHECKED BY: TM

DATE: 01/28/2026

**EASEMENT
EXHIBIT**

PROJECT NO. 50185045

G108

SHEET NO.

