



September 21, 2022

Wake County
Post Office Box 550
Raleigh, NC 27602

Attention: Highland Roofing Company

Reference: Post Bid Addendum No. One to the Bidding Documents for:
Marbles Kids Museum and IMAX Theater
Roof Replacement
REI Project No. 021RAL-082

This addendum is to clarify contractual changes resulting from a value engineering review of the project requirements. The following clarifications, amendments, additions, deletions, revisions, and modifications are hereby made a part of the Contract Documents, and change the original documents only in the manner and to the extent stated below:

This addendum forms a part of the Contract Documents and modifies the Bidding Documents dated June 15, 2022 and all previous addenda (1, 2, 3, & 4) as noted below:

This addendum consists of 2 pages.

This addendum consists of 1 Drawing Sheet, "SK-1" dated 9/1/2022.

CHANGES / CLARIFICATIONS TO PROJECT SCOPE OF WORK

1. Value Engineering Option 01: Mechanically fasten (gang fasten) all roof insulation and gypsum substrate at roof sectors with steel roof deck.
 - a. DELETE Detail I/XR302, dated 6/15/2022.
 - b. ADD Detail 01/SK-1, dated 9/1/2022.

VE Option 01 - Words: Thirty three thousand one hundred twenty

VE Option 01 – Figures: Dollars (\$ 33,120.00)

VE Option 01 – Schedule Impact: Calendar Days (3)

2. Value Engineering Option 05: In lieu of 80 mil PVC roof membrane, provide 60 mil PVC.

VE Option 05 - Words: Thirty one thousand eight hundred sixteen

VE Option 05 – Figures: Dollars (\$31,816.00)

VE Option 05 – Schedule Impact: Calendar Days (0)

3. Value Engineering Option 07: In lieu of bright metallic prefinished galvalume sheet metal as included for Alternate 01, provide prefinished galvalume sheet metal (manufacturer's standard colors).

VE Option 07 - Words: Fifty thousand nine hundred eighty eight

VE Option 07 – Figures: Dollars (\$50,988.00)

VE Option 07 – Schedule Impact: Calendar Days (0)

Total Cost Deduction amount as a result of the modifications above is \$115,924.00.

CHANGES / CLARIFICATIONS TO PROJECT MANUAL

A total of three (3) calendar days are added to the Contract Time as part of VE Option 01. Changes to the Project Manual are listed below:

1. Section 00 73 00 – Typical Supplemental General Conditions.
 - a. Article 1 – Definitions, Paragraph 1.13; DELETE the following:

“The Contract Time is 120 consecutive calendar days, beginning on the Date of Commencement as specified in the written Notice-to-Proceed.”
 - b. Article 1 – Definitions, Paragraph 1.13; ADD the following:

“The Contract Time is **123** consecutive calendar days, beginning on the Date of Commencement as specified in the written Notice-to-Proceed.”

All other requirements and provisions of the Bidding Documents and previous Addenda remain unchanged.

END OF ADDENDUM



ENGINEERS

Engineering solutions for tomorrow®

9121 Anson Way | Suite 100
Raleigh, NC 27615

NORTH CAROLINA
ENGINEERING FIRM
LICENSE # C-1520

www.reiengineers.com

SEALS:



PROJECT NAME:

WAKE COUNTY

MARBLES KIDS MUSEUM
AND IMAX THEATER
ROOF REPLACEMENT

201 EAST HARGETT STREET
RALEIGH, NC 27601

PROJ. NO:

021RAL-082

REVISIONS:

NO.	DATE	DESCRIPTION
DD	01-18-22	DESIGN DEVELOPMENT
CD	04-18-22	CONTRACT DOCUMENTS (90%)
CD	05-17-22	CONTRACT DOCUMENTS (100%)
CD	06-15-22	ISSUED FOR BID
REV.1	07-11-22	ADDENDUM 01
SK-1	09-01-22	SKETCH FOR VE

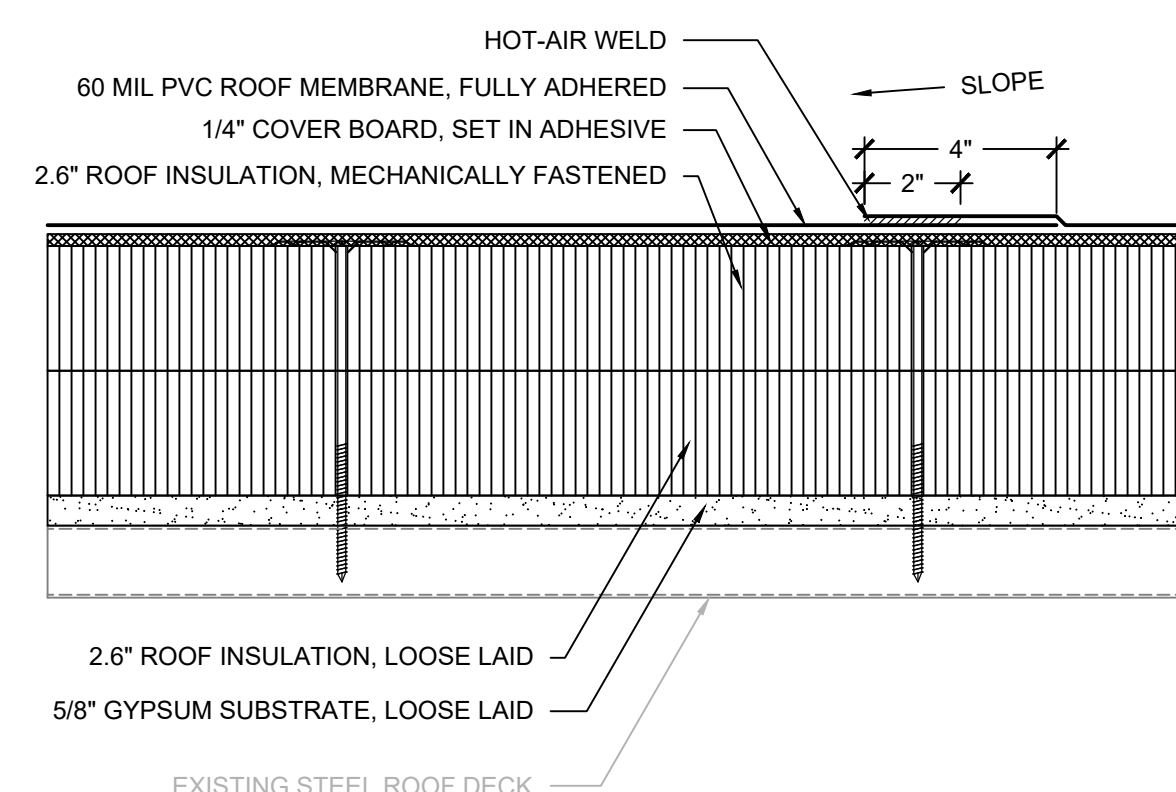
THIS LINE IS 1 INCH ON
THE ORIGINAL DRAWING
IF IT IS NOT 1 INCH ON THIS PAGE,
SCALE DRAWING ACCORDINGLY.

SHEET TITLE

VALUE
ENGINEERING
OPTIONS

DRAWING

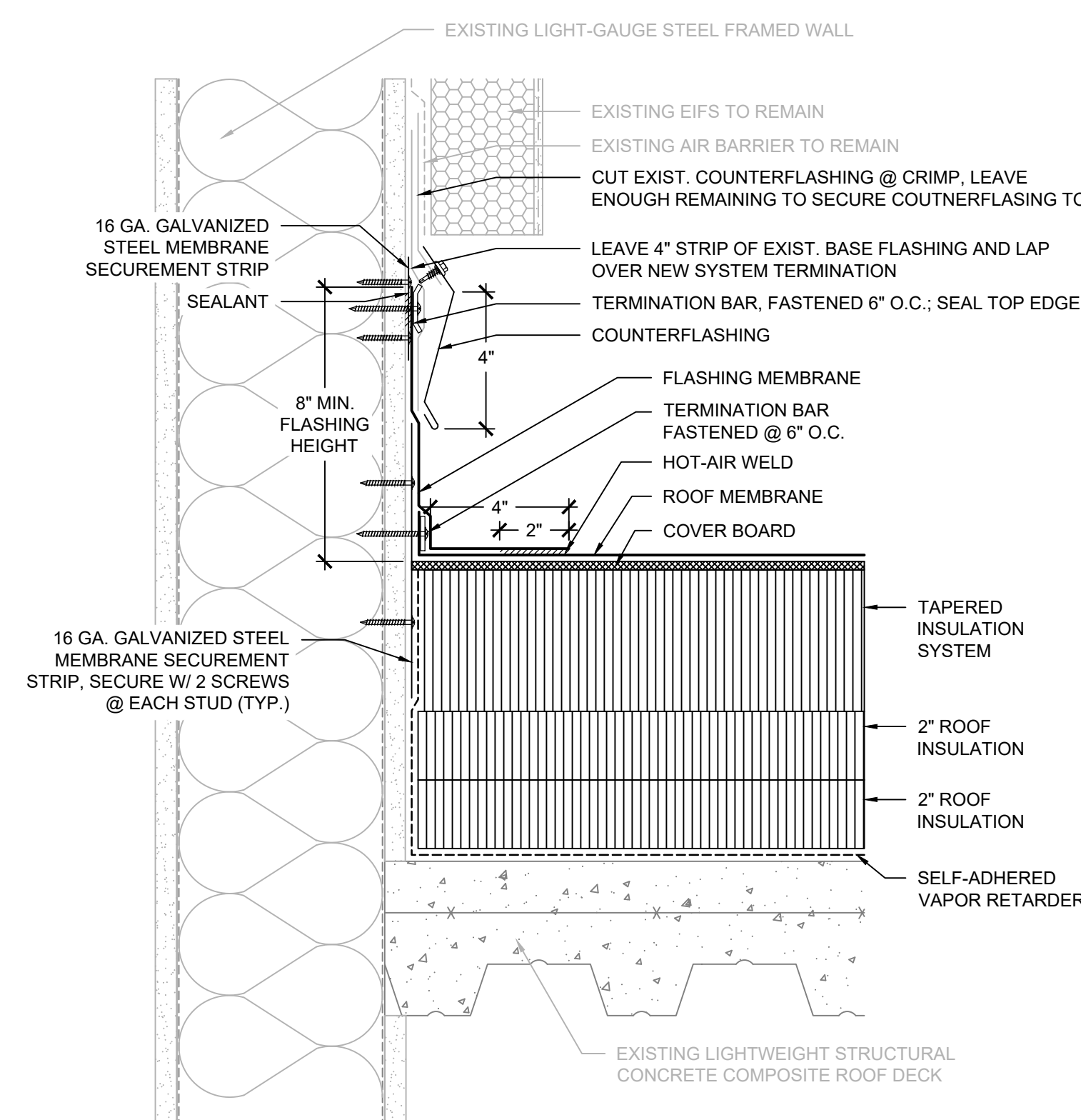
SK-1



- NOTES:
1. ROOF SYSTEM SHALL BE A TESTED ASSEMBLY IN ACCORDANCE WITH FM 4474, UL 580 OR UL 1897 TO RESIST THE WIND UPLIFT PRESSURES LISTED ON SHEET XR104.
 2. PROVIDE SUBMITTAL INCLUDING DOCUMENTATION OF TESTED ASSEMBLY ALONG WITH ATTACHMENT REQUIREMENTS FOR THE ASSEMBLY.
 3. ANY WHOLE OR PARTIAL INSULATION BOARD OR PORTION OF ANY BOARD WHICH FALLS IN THE PERIMETERS & CORNERS OUTLINED SHALL BE SUBJECT TO THE FASTENING REQUIREMENTS FOR THE HIGHEST WIND ZONE ENCOUNTERED, ACROSS THE ENTIRE BOARD.

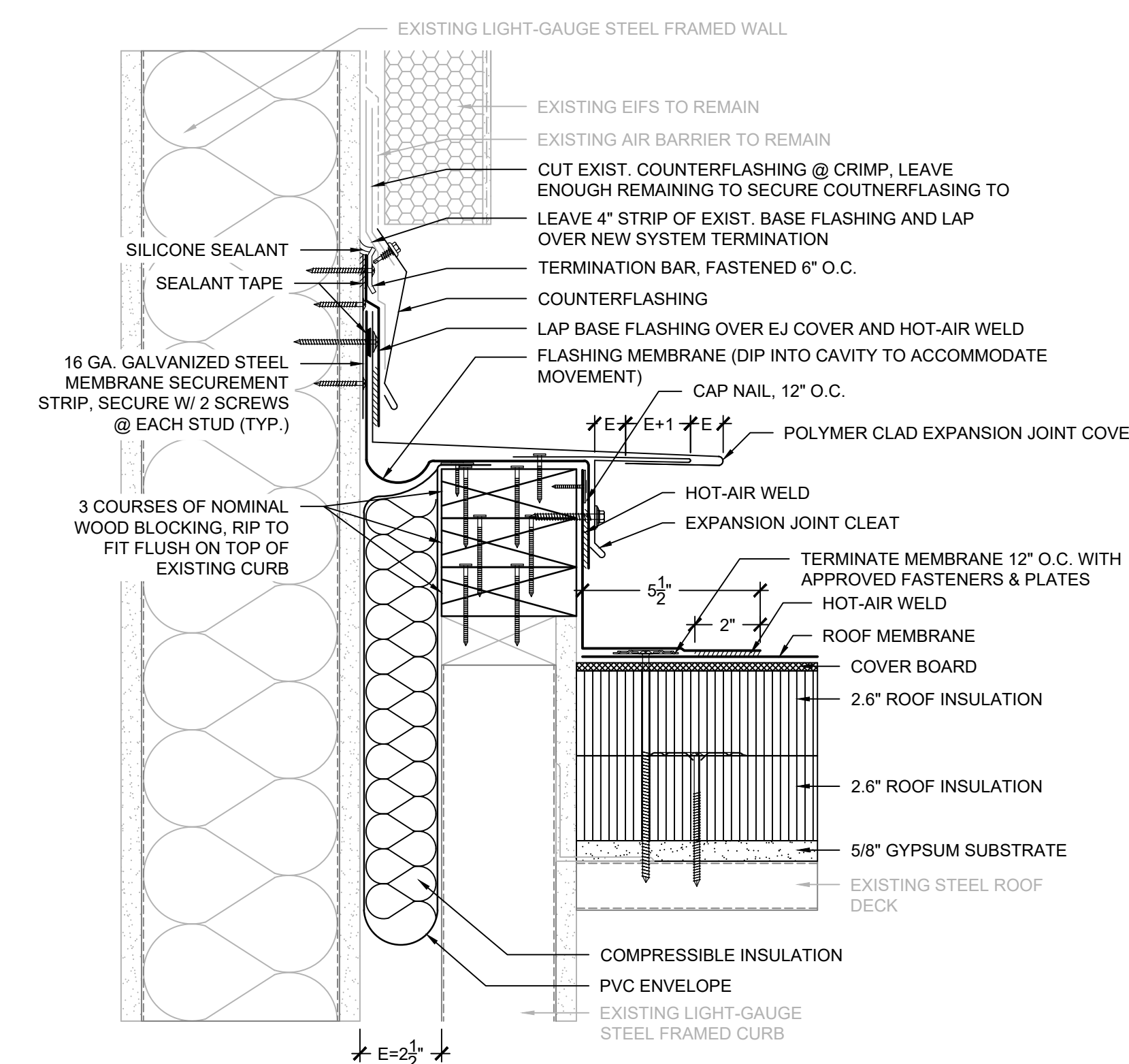
VE OPTION 01 - MECHANICALLY FASTEN
ALL INSULATION - AREAS A2, H, Q, & R

SCALE: 3" = 1'-0"



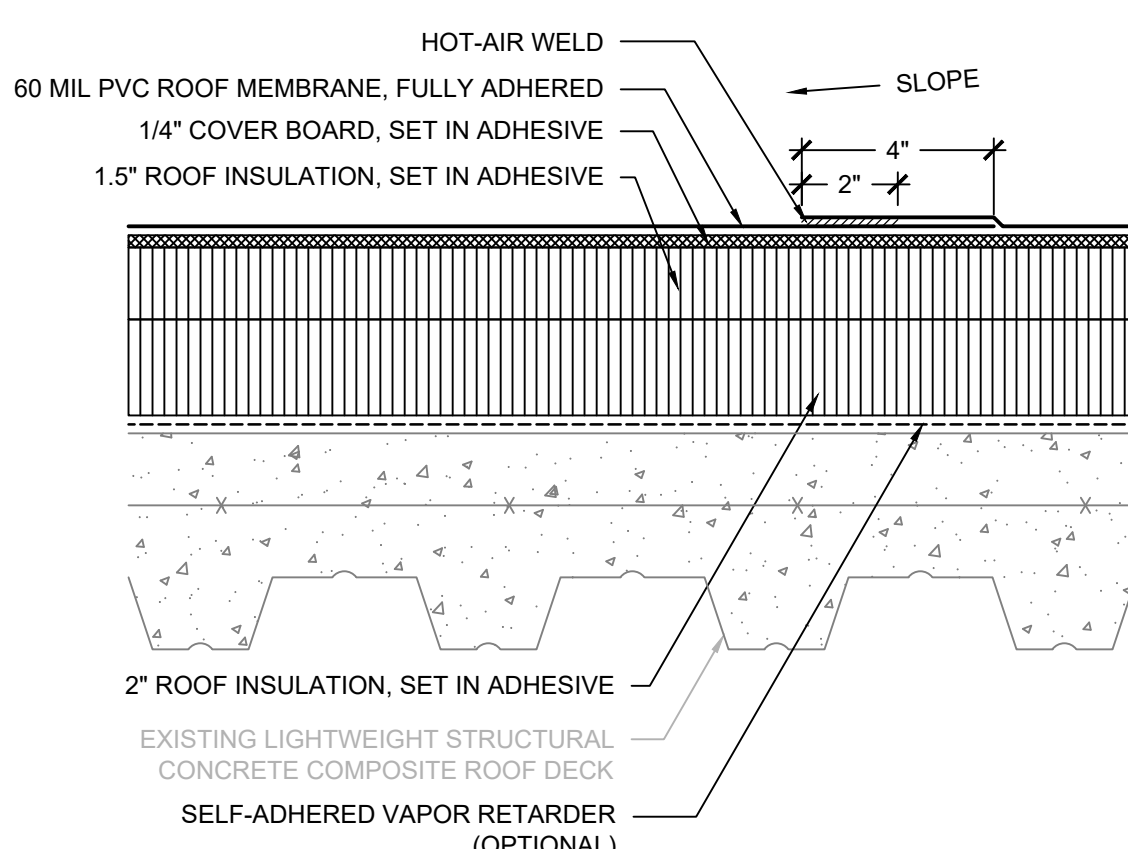
2A VE OPTION 02 - RISING WALL @ EIFS

SCALE: 3" = 1'-0"



2B VE OPTION 02 - WALL EJ @ AREA Q

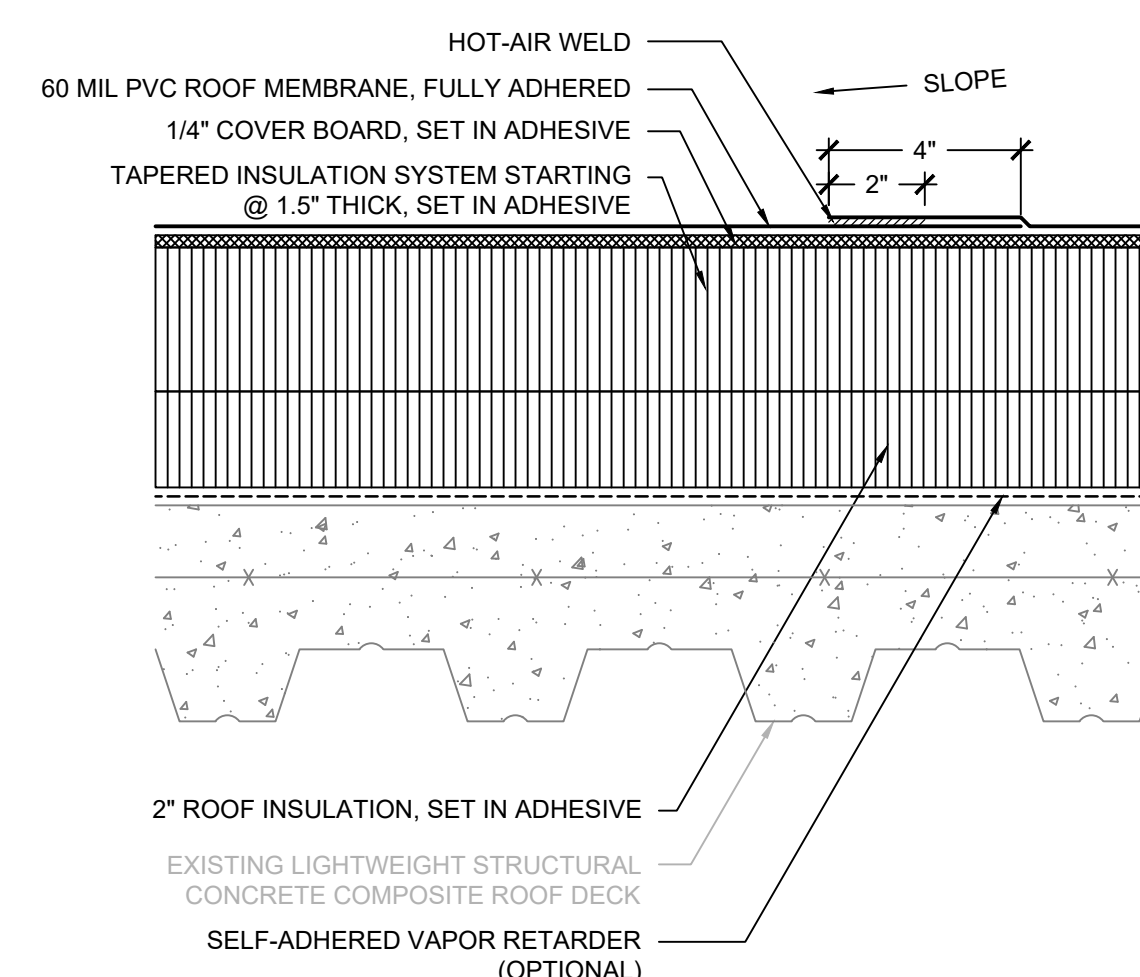
SCALE: 3" = 1'-0"



- NOTES:
1. ROOF SYSTEM SHALL BE A TESTED ASSEMBLY IN ACCORDANCE WITH FM 4474, UL 580 OR UL 1897 TO RESIST THE WIND UPLIFT PRESSURES LISTED ON SHEET XR104.
 2. PROVIDE SUBMITTAL INCLUDING DOCUMENTATION OF TESTED ASSEMBLY ALONG WITH ATTACHMENT REQUIREMENTS FOR THE ASSEMBLY.
 3. ANY WHOLE OR PARTIAL INSULATION BOARD OR PORTION OF ANY BOARD WHICH FALLS IN THE PERIMETERS & CORNERS OUTLINED SHALL BE SUBJECT TO THE FASTENING REQUIREMENTS FOR THE HIGHEST WIND ZONE ENCOUNTERED, ACROSS THE ENTIRE BOARD.

VE OPTION 03 - R-20 ROOFING SYSTEM
@ AREAS A1 & K

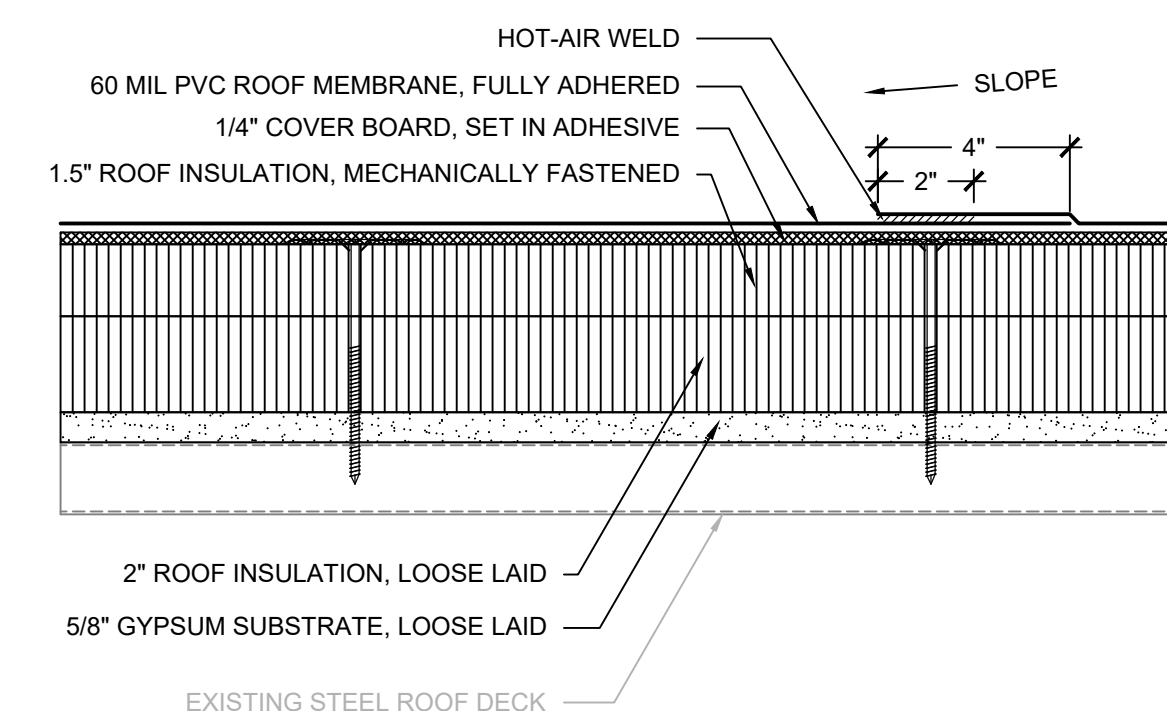
SCALE: 3" = 1'-0"



- NOTES:
1. ROOF SYSTEM SHALL BE A TESTED ASSEMBLY IN ACCORDANCE WITH FM 4474, UL 580 OR UL 1897 TO RESIST THE WIND UPLIFT PRESSURES LISTED ON SHEET XR104.
 2. PROVIDE SUBMITTAL INCLUDING DOCUMENTATION OF TESTED ASSEMBLY ALONG WITH ATTACHMENT REQUIREMENTS FOR THE ASSEMBLY.
 3. ANY WHOLE OR PARTIAL INSULATION BOARD OR PORTION OF ANY BOARD WHICH FALLS IN THE PERIMETERS & CORNERS OUTLINED SHALL BE SUBJECT TO THE FASTENING REQUIREMENTS FOR THE HIGHEST WIND ZONE ENCOUNTERED, ACROSS THE ENTIRE BOARD.

VE OPTION 03 - R-20 ROOFING SYSTEM @
AREAS F, G, I, J, L, M, N, O, & P

SCALE: 3" = 1'-0"



- NOTES:
1. ROOF SYSTEM SHALL BE A TESTED ASSEMBLY IN ACCORDANCE WITH FM 4474, UL 580 OR UL 1897 TO RESIST THE WIND UPLIFT PRESSURES LISTED ON SHEET XR104.
 2. PROVIDE SUBMITTAL INCLUDING DOCUMENTATION OF TESTED ASSEMBLY ALONG WITH ATTACHMENT REQUIREMENTS FOR THE ASSEMBLY.
 3. ANY WHOLE OR PARTIAL INSULATION BOARD OR PORTION OF ANY BOARD WHICH FALLS IN THE PERIMETERS & CORNERS OUTLINED SHALL BE SUBJECT TO THE FASTENING REQUIREMENTS FOR THE HIGHEST WIND ZONE ENCOUNTERED, ACROSS THE ENTIRE BOARD.

VE OPTION 03 - R-20 ROOFING SYSTEM
@ ROOF AREAS A2, H, Q, & R

SCALE: 3" = 1'-0"

MATERIAL KEY:

[Pattern]	ROOF INSULATION
[Pattern]	ROOFING SYSTEM COVERBOARD
[Pattern]	GYPSUM SHEATHING SUBSTRATE
[Pattern]	TAPERED EDGE STRIP
[Pattern]	CONCRETE
[Pattern]	PLYWOOD SHEATHING

- GENERAL NOTES:
1. THESE DOCUMENTS ARE THE PROPERTY OF REI ENGINEERS, INC. (REI) AND REI RETAINS ALL RIGHTS THEREIN, INCLUDING COPYRIGHTS. IT MAY ONLY BE USED IN A MANNER CONSISTENT WITH REI'S RIGHTS WHILE REI IS PROVIDING SERVICE FOR THE SPECIFIC PROJECT IDENTIFIED OR REFERRED TO HEREIN OR EXTENSIONS THERETO. IT MAY NOT BE USED FOR ANY OTHER PURPOSE EXCEPT WITH THE EXPRESS WRITTEN AGREEMENT OF, AND COMPENSATION TO, REI ENGINEERS, INC.
 2. DIMENSIONS, DETAIL COMPONENTS AND EQUIPMENT PENETRATION LOCATIONS ARE FOR INFORMATION ONLY. CONTRACTOR IS RESPONSIBLE TO FIELD VERIFY ALL INFORMATION PROVIDED.

- SHEET NOTES:
1. FOR DETAILS, LIGHT LINES REPRESENT EXISTING CONSTRUCTION TO REMAIN AND DARK LINES REPRESENT NEW COMPONENTS TO BE PROVIDED.
 2. ANY WHOLE OR PARTIAL INSULATION BOARD OR PORTION OF ANY BOARD WHICH FALLS IN THE PERIMETERS & CORNERS OUTLINED SHALL BE SUBJECT TO THE FASTENING REQUIREMENTS FOR THE HIGHEST WIND ZONE ENCOUNTERED, ACROSS THE ENTIRE BOARD.
 3. REFER TO DETAILS ON SHEETS XR303 & XR304 FOR TYPICAL SHEET METAL DETAILS AND NOTES. SHEETS INCLUDE TYPICAL DETAILS FOR THROUGH-WALL FLASHING, METAL EDGES, COPINGS, AND DRAINAGE COMPONENTS.
 4. REFER TO DETAILS ON SHEET XR303 FOR TYPICAL BASE FLASHING CLOSURE DETAILS AND NOTES.
 5. NOT ALL LAYERS SHOWN ON TYPICAL DETAILS FOR CLARITY, REFER TO SECTION DETAILS FOR FLASHING LAYERS AND NOTES.
 6. NOT ALL LAYER SHOWN ON ISOMETRIC DETAILS, REFER TO SECTION DETAILS FOR FLASHING LAYERS AND NOTES.