

Student Engagement Team (SET) Pilot Update

October 6, 2025

Brian Burton, WCPSS, SET Program Manager

Ruth Sutherland, Extension, 4-H Program Manager

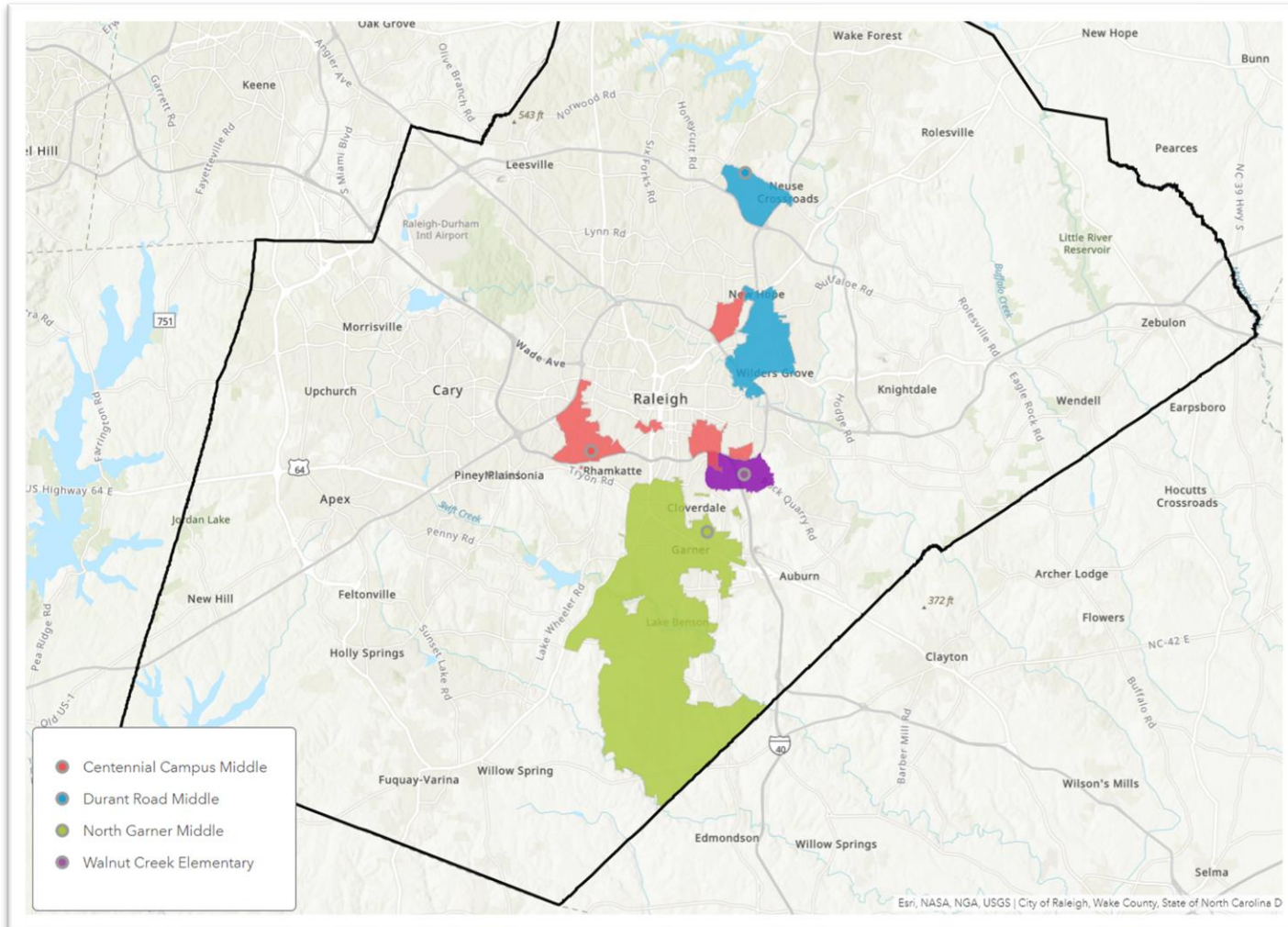
Dr. Adrienne Smith, Cynosure Consulting



@wakegov    

wakegov.com

SET Pilot Schools



**Centennial Campus
Middle**

**Durant Road
Middle**

**North Garner
Middle**

**Walnut Creek
Elementary**

Lifting the Load Together



WAKE COUNTY CENTER



WAKE COUNTY
PUBLIC SCHOOL SYSTEM



Organization & Governance



SET PROFESSIONAL LEARNING COMMUNITIES

- Involves members closest to the work
- School 4/ 1 per School (SST+Admin+SET)
 - Project 1 (SET project+Managers)
 - Component 2 (4-H/Alliance)
- Monthly Meeting Expectations

SET MANAGEMENT TEAM (Managers)

- Team & Project Development
- Bi-monthly Meeting
Expectations during launch
- Directly Support PLC's

SET LEADERSHIP TEAM (Managers +Sponsors)

- Collaborative
Operating System Design
Monthly Meeting
- Shared Decision-Making
& Resource Investment

SET STEERING TEAM (Consultants + Managers + Sponsors)

- Consultation, Project Design & Support
- No Monthly Meeting
Expectations
- On call as needed

SET Sponsors:

Michael Pearce;
Debbie Richardson;
Katherine Williams

Accountable Administrator representing partner institutions:

- Serve on SET Leadership Team & SET Steering Team

SET Consultants:

Vielka Gabriel; Dr. Thomas Ray;
Dr. MariaRosa Rangel;
Michael Pesce; Tanyetta Sutton;
Dr. Adrienne Smith

Institutional stakeholders who contribute expertise, coordination & support for collaboration:

- Serve on SET Steering Team

SET Managers:

Brian Burton;
Ruth Sutherland;
Tammy Commons

Selected individuals representing 3 institutional partners assigned lead responsibility for project and team development:

- Provide oversight for SET Project Staff & Operations
- Form SET Management Team
- Serve on SET Leadership Team & Direct Support for School-based PLC's

SET Project Staff:

Regina Isaac, System of Care Liaison
Jennifer Augusto, Family & Youth Engagement Coach
Sandy Diaz, Family & Youth Engagement Coach
Leah Hayes, Family & Youth Engagement Coach
Je'toya Robinson, Family & Youth Engagement Coach
Rebecca Wheeler, School-Based Care Coordinator

Program staff dedicated to serving students and families at each of the 4 schools.

- Serve on School-based PLC's
- Engagement with SET Management, Leadership, or Steering Teams.

Vision & Design: Core Strategy Components

Family & Youth Coaching

Individual and group coaching

Customized goals to meet family needs

Positive Youth Development

Prevention Services

School involvement

Enrichment opportunities

Integrated within Schools

On-site collaboration for student success

Multi-Tiered Systems of Support

Clinical Mental Health

Improve access

Bridge transitions for psychiatric hospitalization, residential treatment, and school

Systems of Care

Family Centered

Coordination to meet immediate needs

Address chronic barriers

Cultivate new resources

Community

Family and Community based strategies

Strengthen community partnerships

Sustainable solutions

Collaboration



- Social Services Department
 - Social & Economic Vitality – Mindset with Group Education/ Coaching, Engagement Events
 - Holiday Cheer
- Behavioral Health Department
 - Prevention & Capacity Building
 - Youth Mental Health First Aid
 - CATCH My Breath

Tiered Approach

Service Intensity and Reach

High Intensity / Targeted Reach

Individualized, time-intensive

- Individual Youth & Family Coaching
- Navigation / Resource Access

Medium Intensity / Moderate Reach

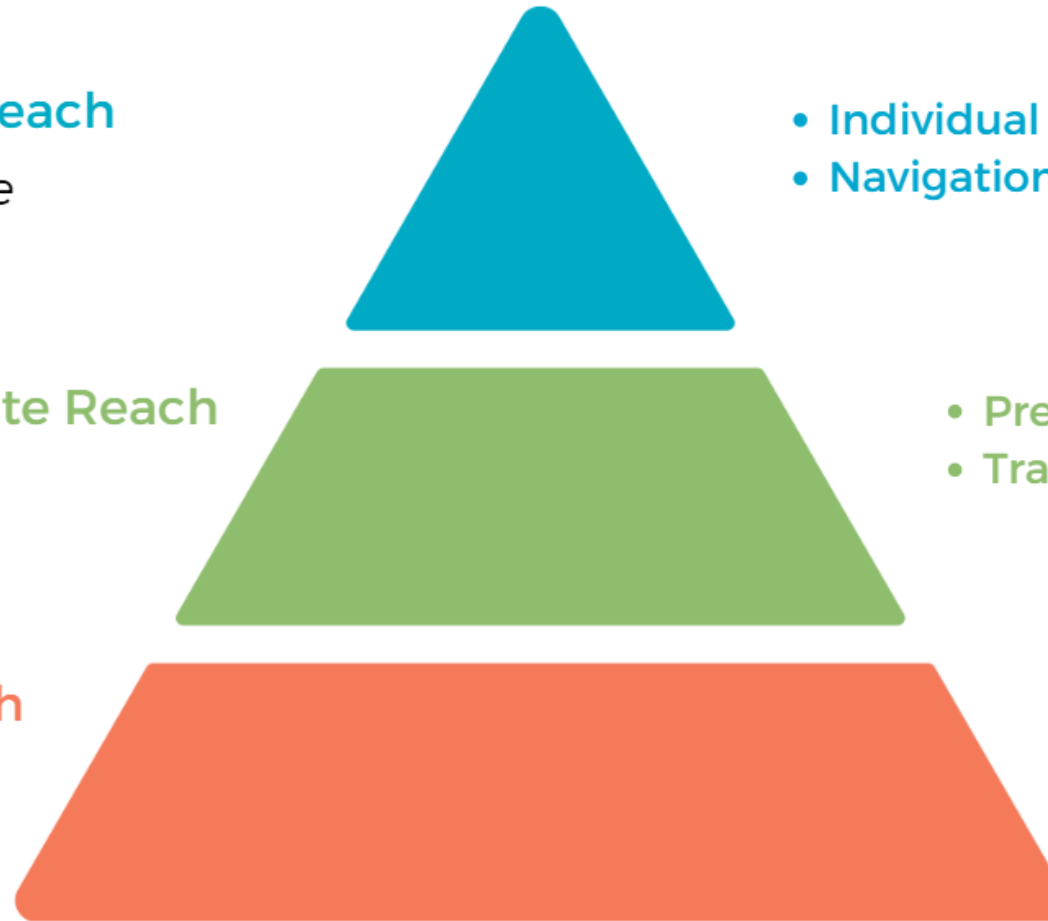
Group-based, educational, & skill-building

- Prevention Curricula
- Train the Trainer

Low Intensity / Broad Reach

Awareness, outreach, and school enrichment

- Family Engagement Events
- School Enrichment



Evaluation Approach



Dr. Adrienne A. Smith

SET Data Systems & Measures

Qualitative

- School staff and stakeholder surveys
- School-level impact portraits
- Program-crafted success stories



Quantitative

- Service reach
- Goal attainment
- Crisis-to-Thriving pre/post measures,
- Post 4-H participation survey
- Student academic outcomes

SET Data Systems & Measures



- Data Collection & Analysis
- Positive Youth Development
- Family Outcomes
- Academic
 - Grades, Attendance, Behavior

SET Coaching Update – from 23-24 to present



- **248** Student Referrals
- **132** Families Enrolled
- **153** Students Enrolled
- **44** Families Graduated
- **49** Students Graduated
- **1 year** - Average Length of SET Coaching before graduation



SET Program Update - from 23-24 to present

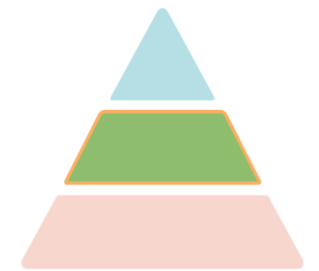


89 Families received behavioral health or community resource navigation through SET Alliance Health to meet complex needs.



SET Update – from 23-24 to present

- **500+** School and community staff trained in youth mental health first aid, trauma-informed practices, and/or social emotional learning topics.
- **300+** Students trained in youth risk behavior prevention and/or social emotional learning topics
- **100+** Students in new Male Mentorship and Attendance Programs



Medium Intensity

SET Update – from 23-24 to present



- **1000+** Student Family Engagement Events and Information Fairs
- **200+** School Enrichment – e.g., 4-H Embryology Program, all 2nd graders at Walnut Creek ES



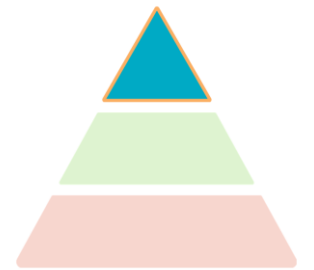
PYD Data: Coming to SET helped me . . .



- Feel better about my future - **88%**
- Try harder in school - **76%**
- Get along better with classmates – **75%**
- Better setting goals – **75%**

All or Most of the Time

N=83, after 6 months or more in SET



High Intensity

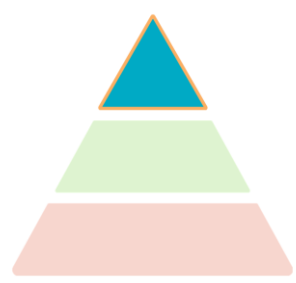
What SET Students Say Is Changing (PYD)



- **Safety & Belonging**
 - Students feel safe and welcomed
- **Positive Relationships with Staff**
 - Trusted adults listen and expect our best
- **Academic & Social Growth**
 - Trying harder in school
 - Better peer relationships
- **Healthy Decision-Making & Risk Avoidance**
 - Staying away from alcohol, drugs, tobacco, and violence
 - Getting better at saying "no"

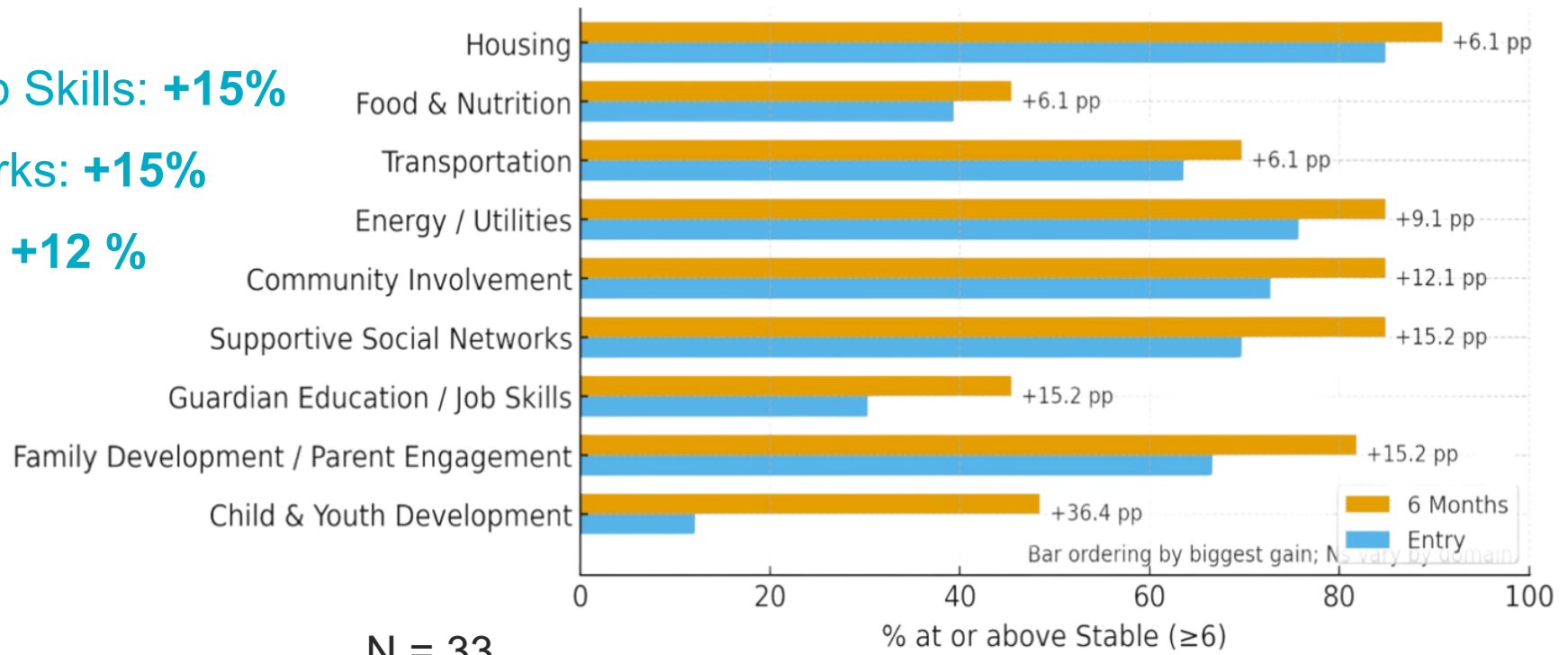
SET Family Data - Statistically Significant Changes

- Child & Youth Development: **+36%**
- Family Development / Parent Engagement: **+15%**
- Guardian Education / Job Skills: **+15%**
- Supportive Social Networks: **+15%**
- Community Involvement: **+12 %**



High Intensity

Crisis→Thriving Threshold Progress — % Stable+Thriving (Entry vs. 6 Months; paired data per domain)



N = 33

Parent and Guardian Comments



- SET *"provides them with support, motivation, and a safe place."*
- Without SET *". . . we would have often suffered without adequate food or clothing. I'm thankful to have them in our lives and now part of our village."*

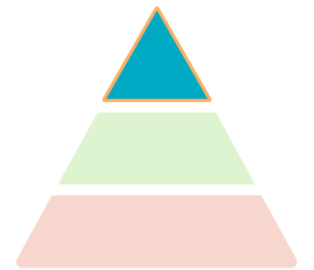
School Data: Grades - Statistically Significant Changes



Average Grade at Enrollment: **D**
Average Grade at Graduation: **C**

10 - 20% grade increase for
most across classes

N = 26, SET student
graduates with paired data



High Intensity

School Data: Attendance and Behavior

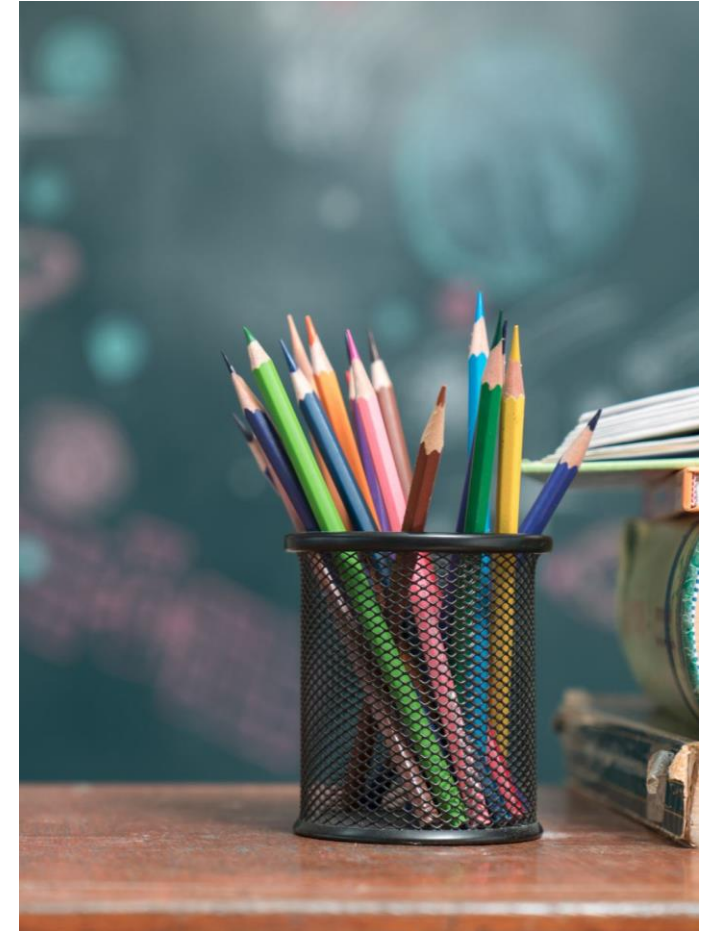


School leaders consistently report ongoing improvement in SET students' attendance, work habits, and conduct.



WCPSS Staff Comments

- *"Schools are overwhelmed with specific individualized needs, and having SET with a network of contacts to community programs and services allows needs to be met quickly and effectively."*
- *We have (SET) graduates who "experience improvements in their academic performance for the first time!"*
- *". . . parents and families feel more confident and equipped to help support their students in school as a result of the SET program."*



SET Pilot - Success

- **Student outcomes are improving:** Attendance, engagement, and grades show gains.
- **Family stability is rising:** Progress in multiple social determinants of health areas - child & youth development, parent engagement, guardian education/job skills, social networks, community involvement, utilities, housing, transportation, and food security.
- **School Anchored System of Care is evolving:** Schools as the front door
- **Integration is working:** Schools, families, and community partners share data, coordinate actions, and reduce service gaps.
- **Deliberate Alignment is promoting positive results:** Youth, Family, School

Q & A

