

Wake County Native Plants Initiative

Project Update

Board of Commissioners Meeting

October 15, 2018



@wakegov    

wakegov.com

Goal / Background

Increase the use of Native Plants for Wake County projects

- OSAPAC 2017 – Initiative introduced
- GLUE March 2018 – PROS introductory presentation
- OSAPAC March 2018 – Recommend moving through GLUE
- GLUE June 2018 – FDC Planned approach
- GLUE September 2018 – Project update
- BOC Work Session October 2018



Why Plant with Native Species?

Native Species:

- Encourage stewardship of the land
- Celebrate natural diversity
- Provide food and shelter for wildlife
- Create a sense of place
- Reduce water and maintenance needs
- Restore native / regional landscapes
- Withstand regional weather extremes
- Provide an educational opportunity
- Create a model for other development



Research Process

Contributors

NC Botanical Gardens
Landscape Architect Summit (10)
Wake County Planning
Wake County GSA Field Services
Campus Landscape Architects (2)
Landscape Nurseries (5)
Landscape Contractors (3)

Resources

Wake County Documents
USDA-NRCS Plants Data Base
NC Native Plant Society
NC Botanical Gardens Lists
NCSU Cooperative Extension
NC Invasive Plants Council
College Campus Design Guidelines
Municipal Ordinances

1. Wake County Unified Development Ordinance

Recommendations

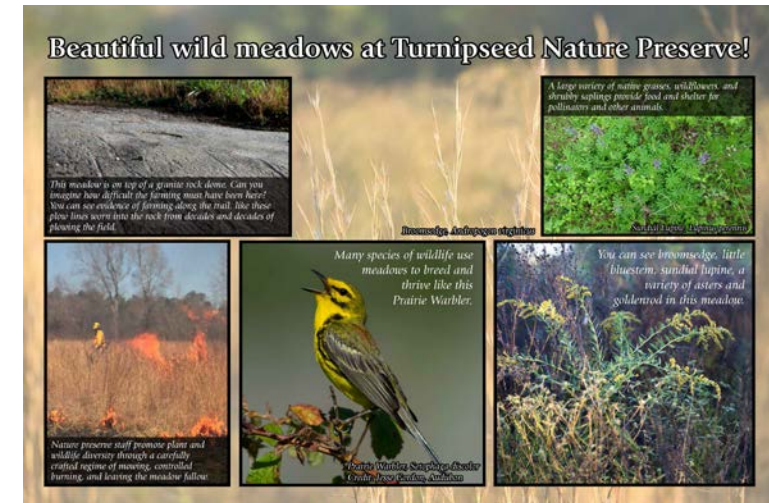
- Include and reference the most current invasive species list per NC Invasive Plants Council
- Include and reference the most current noxious weeds list from NC Department of Agriculture and Consumer Services
- Require design professionals to indicate native species on all required landscape plans



2. Wake County Design Guidelines and Standards

Recommendations

- Provide specific references for native plants / invasive lists
 - USDA, NC Native Plant Society, NC Botanical Gardens
 - NC Invasive Plants Council, NC Dept of Ag and Consumer Services
- Increase use of native plants by establishing a minimum % of native plants required for each project
- Include native grasses in landscape plans
- Require design professionals to indicate native species on all submitted landscape plans
- Provide improved soil specifications
- Include educational signage for each project

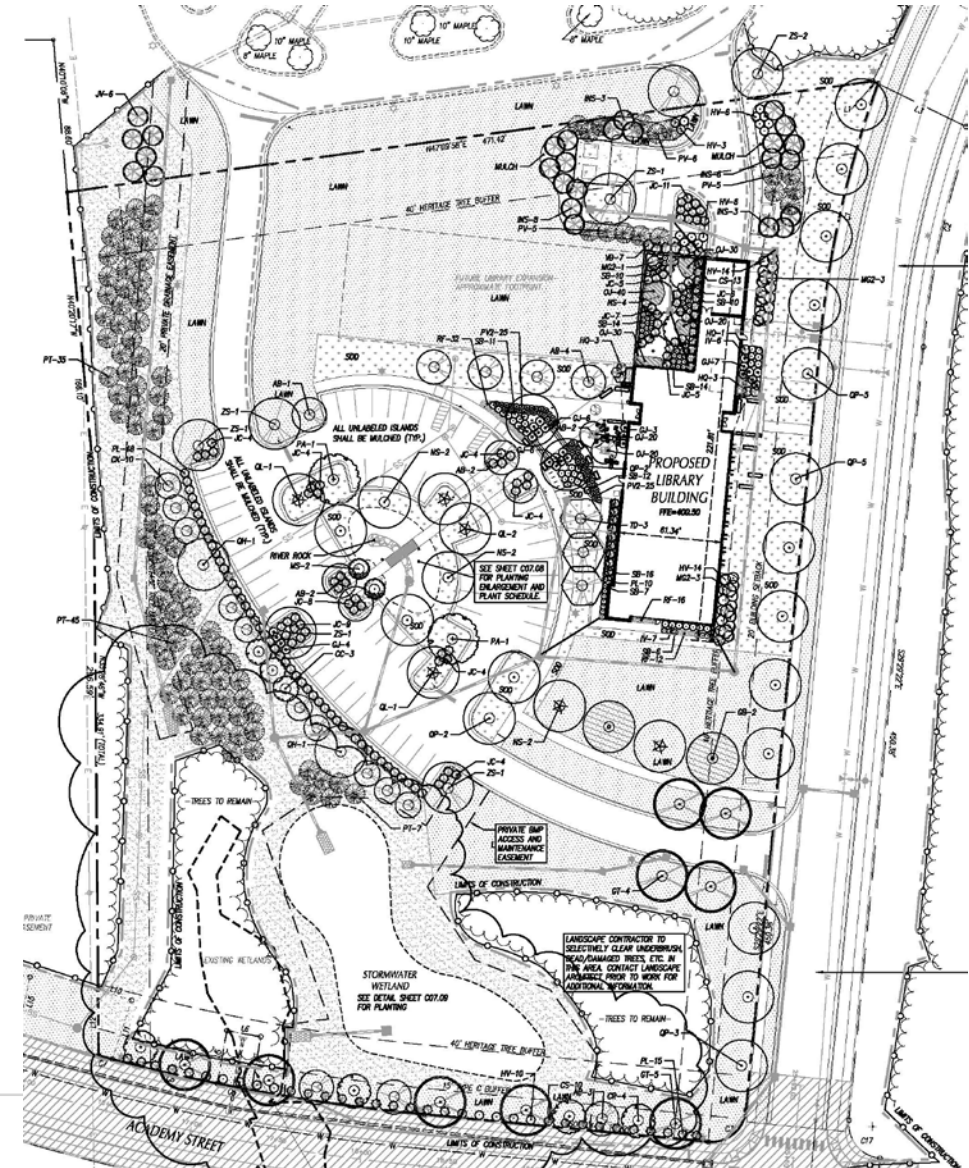


3. Establish a Pilot Project

Recommendation

Fuquay-Varina Public Library

- Increase native plant species to 70% minimum
- Provide educational signage
 - Use of native plants on site and storm water wetlands



Board Resolution Summary

Wake County Board of Commissioners will review and revise the Wake County UDO and the Wake County Design Guidelines and Standards ensuring that Wake County government projects use Native Plants to the greatest extent possible.

