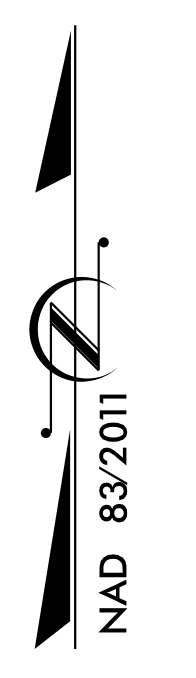
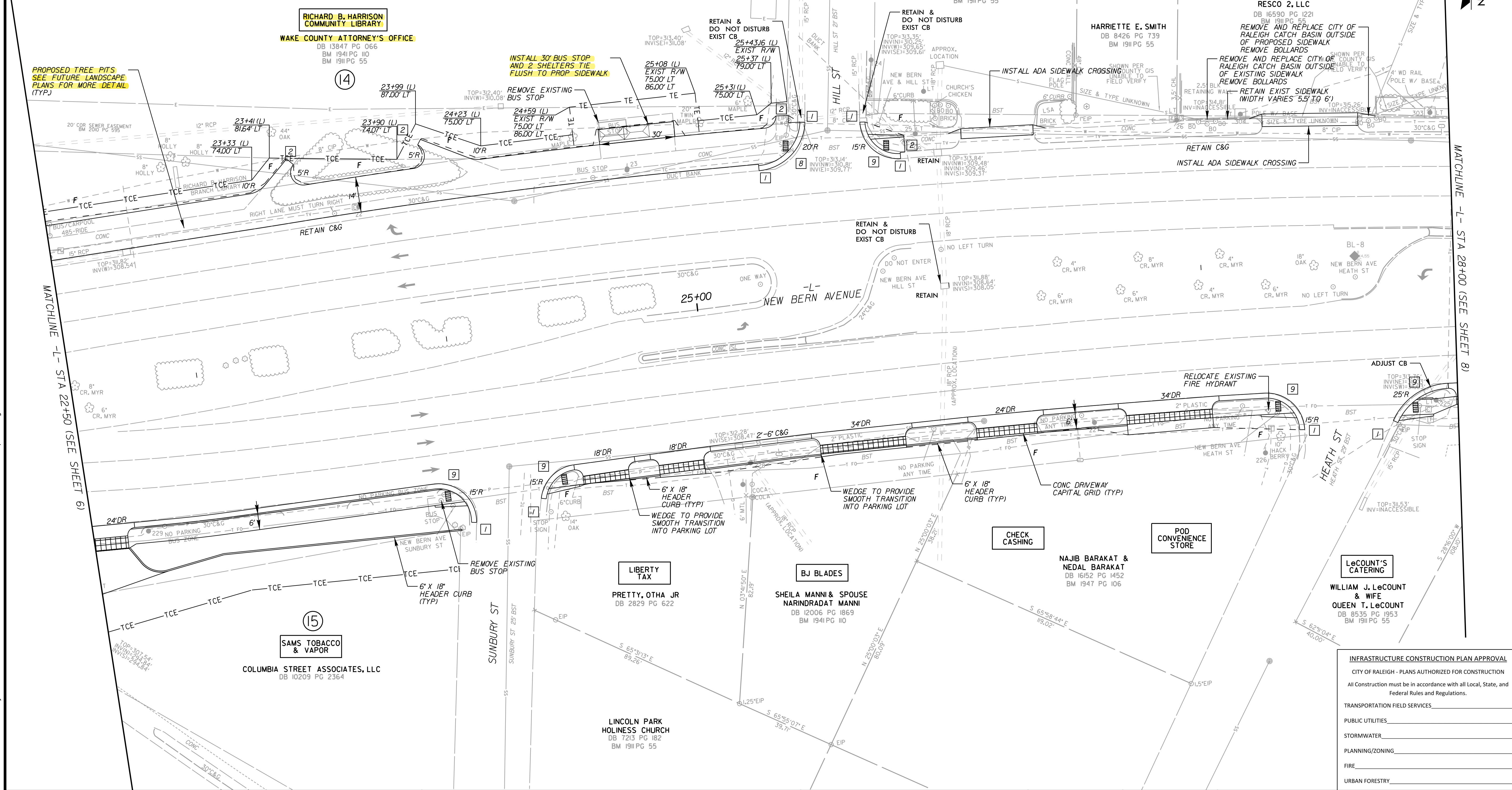


- CONSTRUCTION NOTES**
- TIE PROPOSED 2'-6" CURB & GUTTER TO EXISTING CURB & GUTTER
 - TIE PROPOSED SIDEWALK TO EXISTING SIDEWALK
 - CONSTRUCT CURB RAMP PER DETAIL TYPE 2A (SEE SHEET 2-A)
 - MEANDER MUP OR SIDEWALK AROUND POLE OR LARGE TREE
 - CONSTRUCT CURB RAMP PER DETAIL N-1A (SEE SHEET 2-C)
 - CONSTRUCT CURB RAMP PER DETAIL N-2 (SEE SHEET 2-C)
 - CONSTRUCT CURB RAMP PER DETAIL N-3 (SEE SHEET 2-C)
 - CONSTRUCT CURB RAMP PER DETAIL N-3A (SEE SHEET 2-C)
 - CONSTRUCT CURB RAMP PER DETAIL R-1 (SEE SHEET 2-C)
 - CONSTRUCT CURB RAMP PER DETAIL R-2 (SEE SHEET 2-C)
 - CONSTRUCT CURB RAMP PER DETAIL R-2A (SEE SHEET 2-C)
 - CONSTRUCT CURB RAMP PER DETAIL R-3 (SEE SHEET 2-C)
 - SEE PEDESTRIAN REFUGE DETAILS (SEE SHEET 2-C)
 - PROPOSED PED HEAD/PUSH BUTTON

NOTE 1: RADII DIMENSIONS ARE TO THE EDGE OF PAVEMENT UNLESS OTHERWISE NOTED (ALL SHEETS)
 NOTE 2: RADII DIMENSIONS ON SIDEWALK ARE TO THE CENTERLINE UNLESS OTHERWISE NOTED (ALL SHEETS)
 NOTE 3: ALL POLES, HANDHOLES, MANHOLES, VALVES, METERS, AND HYDRANTS TO BE MOVED OUT OF SIDEWALK OR BE ADJUSTED TO GRADE BY UTILITY OWNER
 NOTE 4: SEE SHEET 2-G FOR CURVE DATA
 NOTE 5: UNLESS OTHERWISE NOTED, ALL EXIST STORM DRAIN SYSTEM IS TO BE RETAINED
 NOTE 6: ALL SURVEYED TREES TO BE RETAINED UNLESS OTHERWISE NOTED
 NOTE 7: ALL CONSTRUCTION TO BE IN ACCORDANCE WITH ALL CITY OF RALEIGH AND/OR NCDOT STANDARDS AND SPECIFICATIONS



MATCHLINE - STA 28+00 (SEE SHEET 8)

K:\RAL_Roadway\01063083 - New Bern Avenue\Plan\Plan Streets\01063083_dsh_1.dgn

REV. No.	REVISION	DATE	DRAWN BY	CHECKED BY

This document, together with the concepts and designs presented herein, as an Instrument of service, is intended only for the specific purpose and client for which it was prepared. Reuse of and improper reliance on this document without written authorization and adoption by Kimley-Horn and Associates, Inc. shall be without liability to Kimley-Horn and Associates, Inc. Copyright Kimley-Horn and Associates, Inc., 2018

PREPARED IN THE OFFICE OF:

Kimley » Horn

NO LICENSE #F-0102
 P.O. BOX 33088
 RALEIGH, NORTH CAROLINA 27636
 PHONE: (919) 677-2000

©2018

ROADWAY PLAN SHEET

PRELIMINARY PLANS
 DO NOT USE FOR CONSTRUCTION

PROJECT:
NEW BERN AVENUE SIDEWALK & TRANSIT IMPROVEMENTS PROJECT

JOB NUMBER: 011063083 SHEET NUMBER: 7

INFRASTRUCTURE CONSTRUCTION PLAN APPROVAL

CITY OF RALEIGH - PLANS AUTHORIZED FOR CONSTRUCTION

All Construction must be in accordance with all Local, State, and Federal Rules and Regulations.

TRANSPORTATION FIELD SERVICES	_____
PUBLIC UTILITIES	_____
STORMWATER	_____
PLANNING/ZONING	_____
FIRE	_____
URBAN FORESTRY	_____